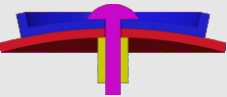
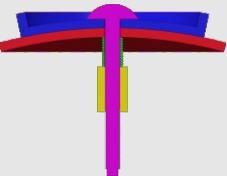
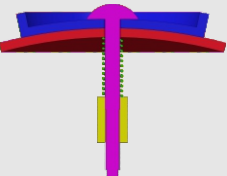
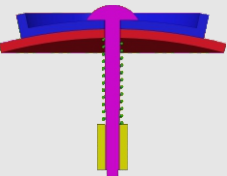


How to tighten the screws

Find your model in the table

Assembly section	Tightness	Models
	tight (no spring)	#61,#75
	tight (spring in green) (Short screw is recommended)	#72,#73,#77,#87,#88 #89
	medium (spring in green)	#94,#93,#90,#86,#85 #83,#82,#81,#80,#79 #78,#76,#71,#70,#69 #68,#67,#66,#65,#64 #63,#62,#60,#59
	loose (spring in green)	Mostly applicable to 'medium' category. Not recommended in general.

1. Tighter is usually better since the spring we provide is soft.
2. Early products had been using longer screws. You can either insert thick washer when necessary or request for short screws in the <Accessory & free parts> directory at our homepage:
<https://www.verypuzzle.com>

VeryPuzzle
2024/04

VeryPuzzle

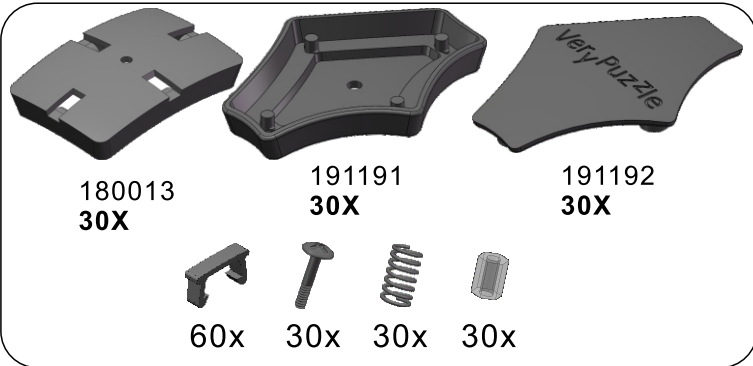


Rhombic Tuttminx F2
D1RT5-M5-F2
#85

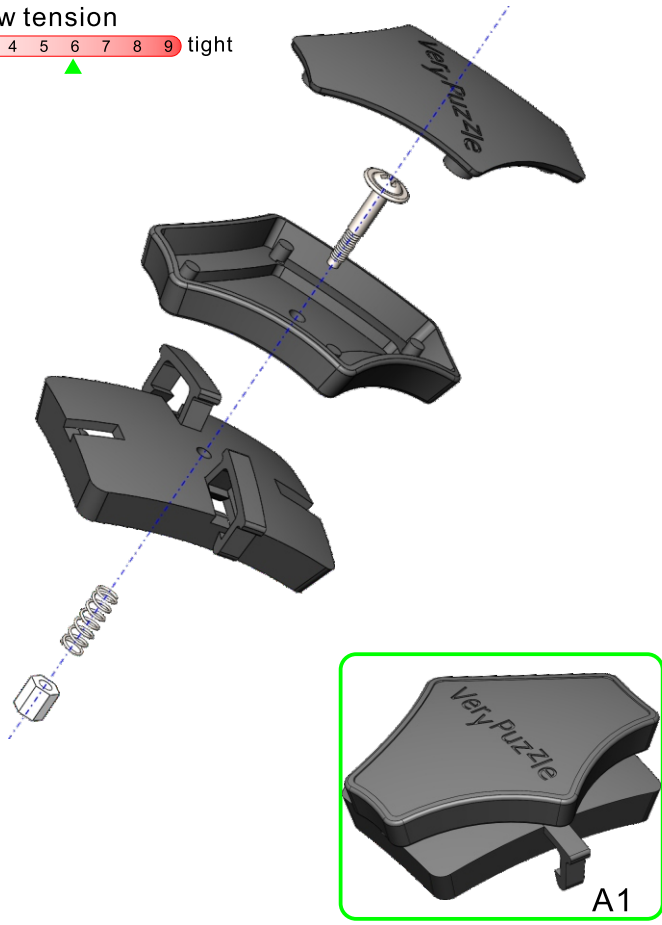
900+ parts
40 axes



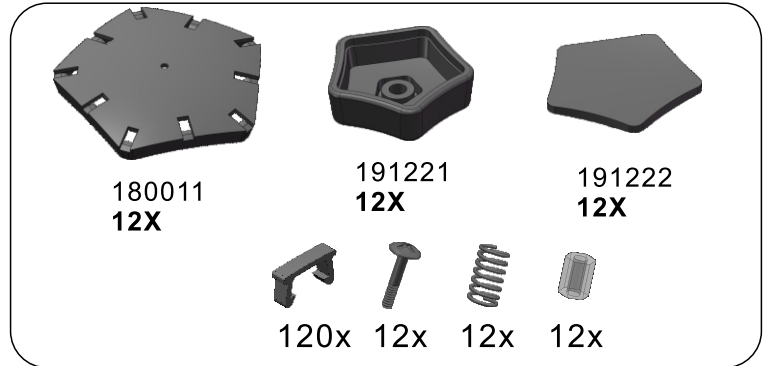
1



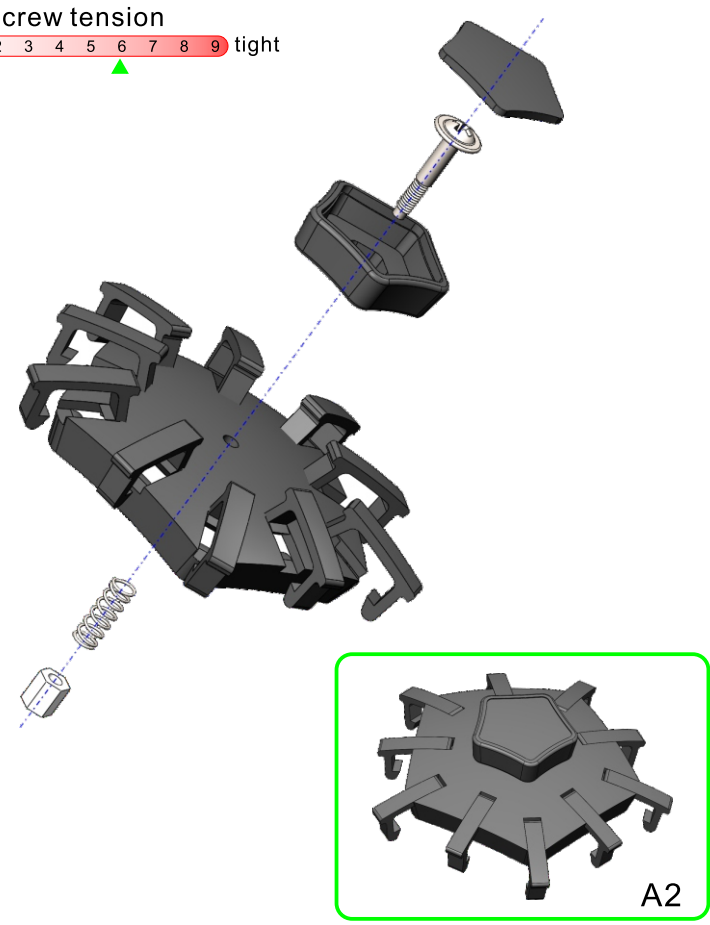
screw tension
no tension 0 1 2 3 4 5 6 7 8 9 tight



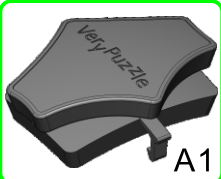
2



screw tension
no tension 0 1 2 3 4 5 6 7 8 9 tight

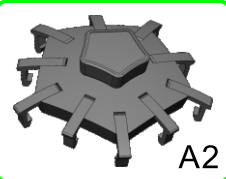


3



A1

30x



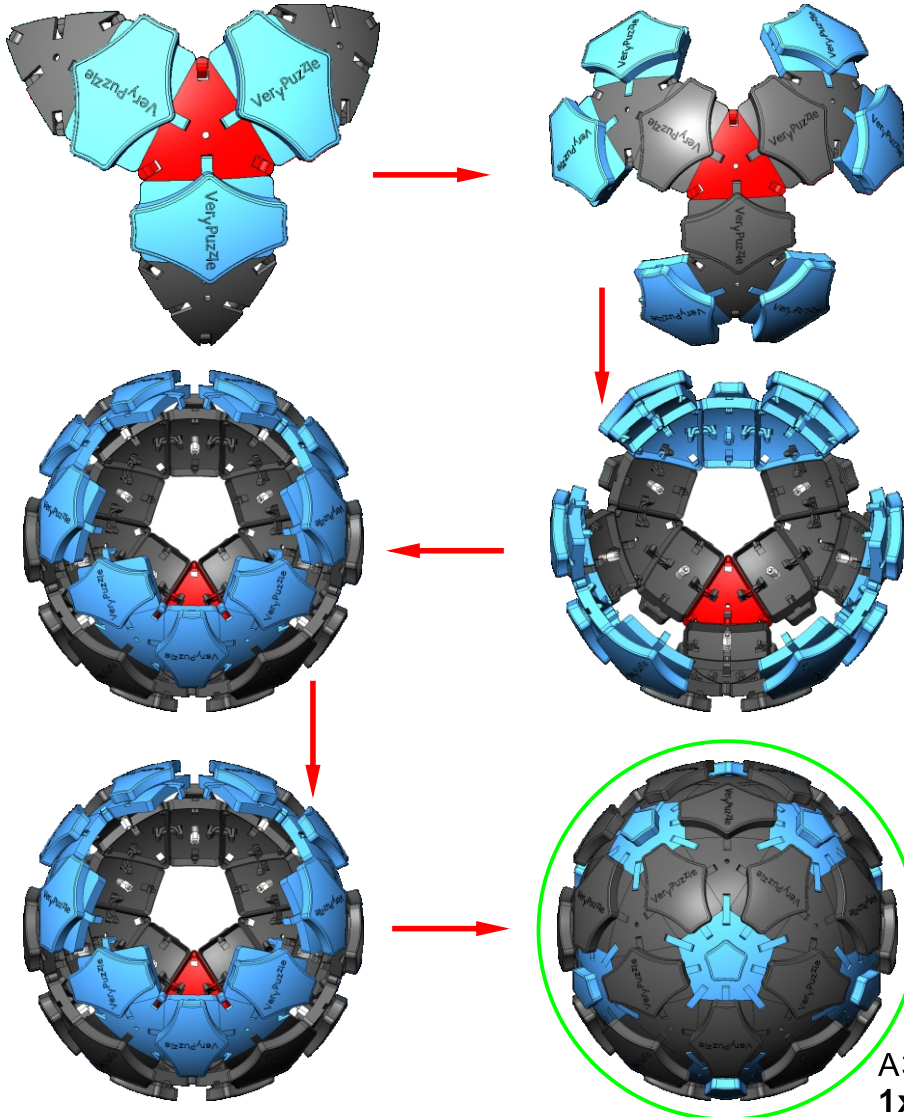
A2

12x



180012

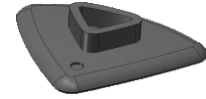
20x



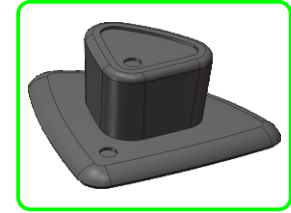
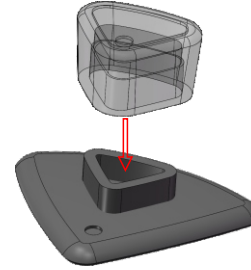
4



191202
60x



191203
60x

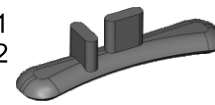


A4
60x

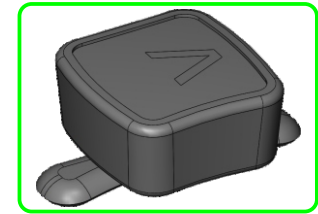
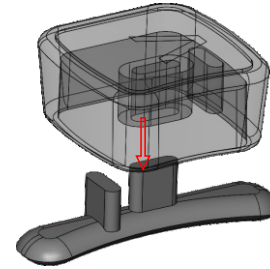
5



191231
191232
60x



191233
191234
60x

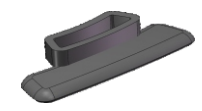


A5
60x

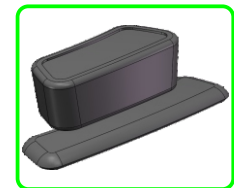
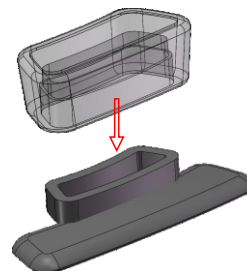
6



191201
60x

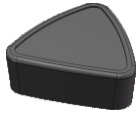


191204
60x



A6
60x

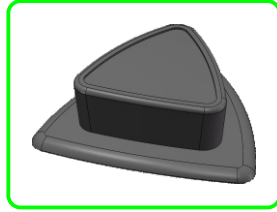
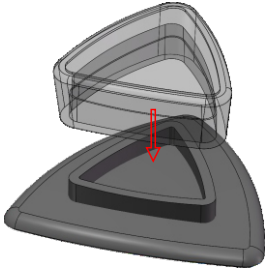
7



191241
191242
20X



191243
191244
20X



A7
20x

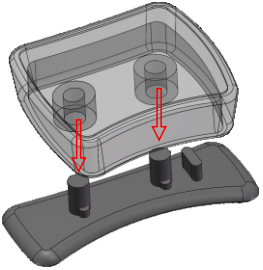
8



191211
191212
60X

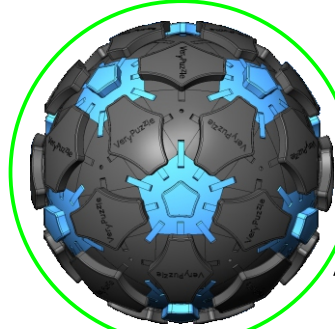


191213
191214
60X

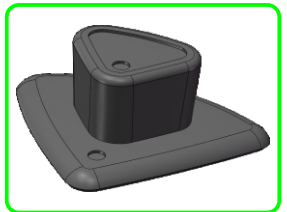


A8
60x

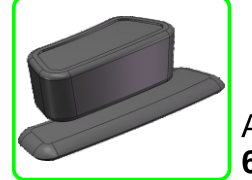
9



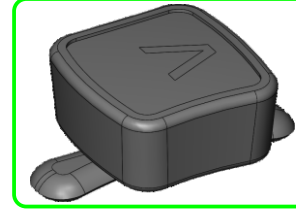
A3
1x



A4
60x



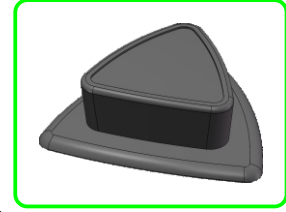
A6
60x



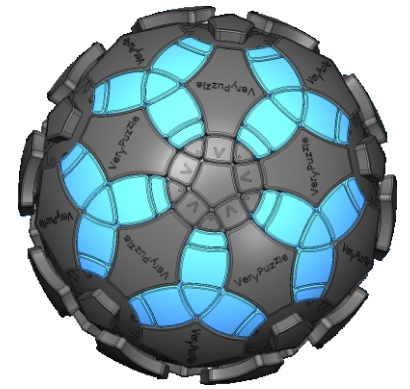
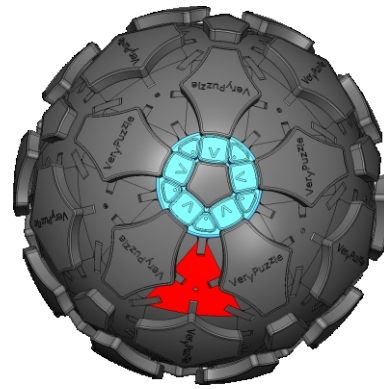
A5
60x



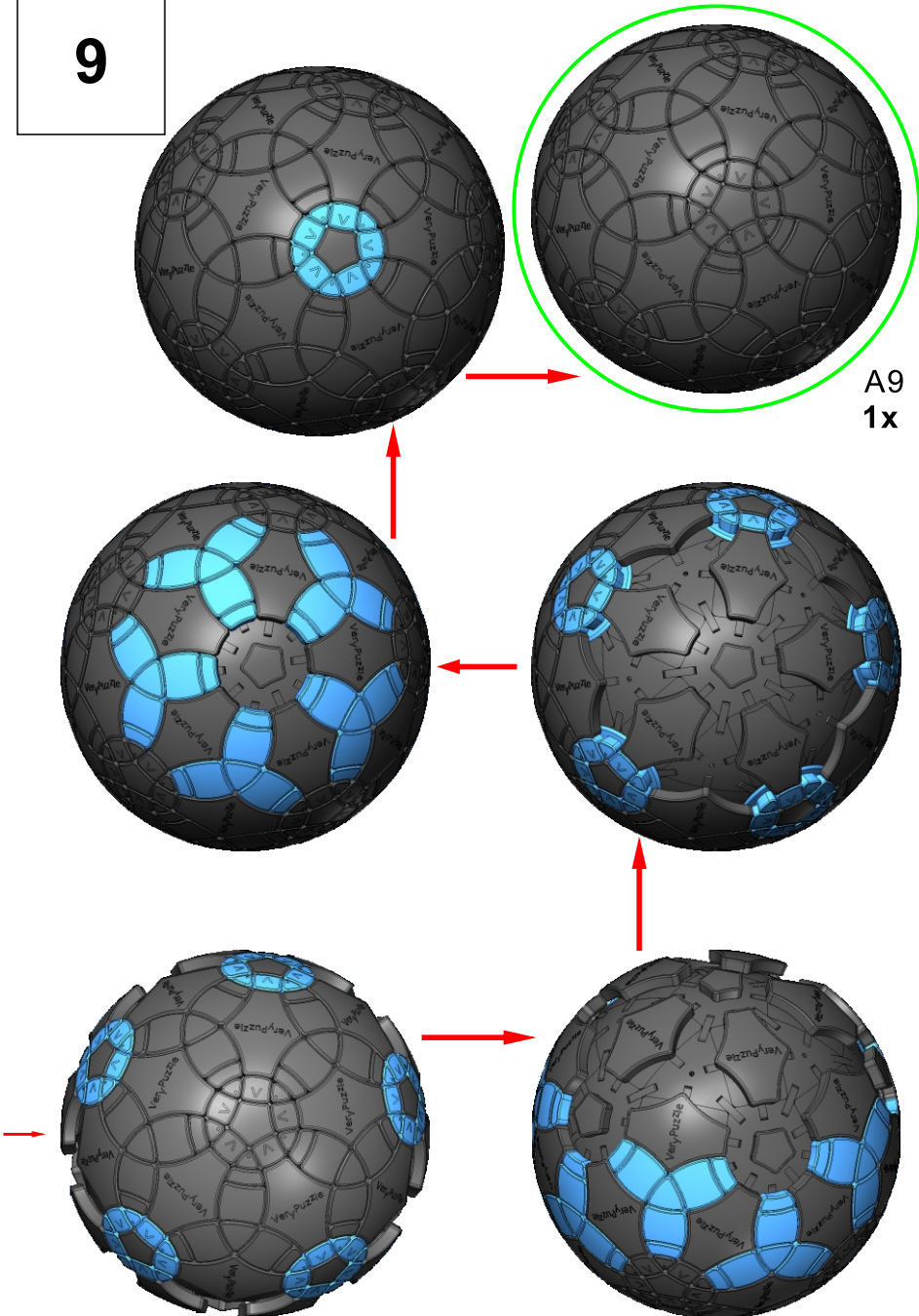
A8
60x



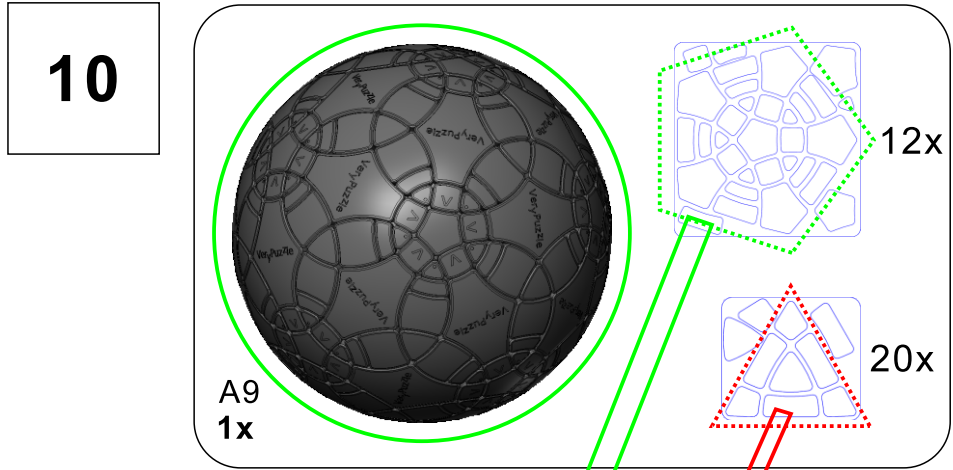
A7
20x



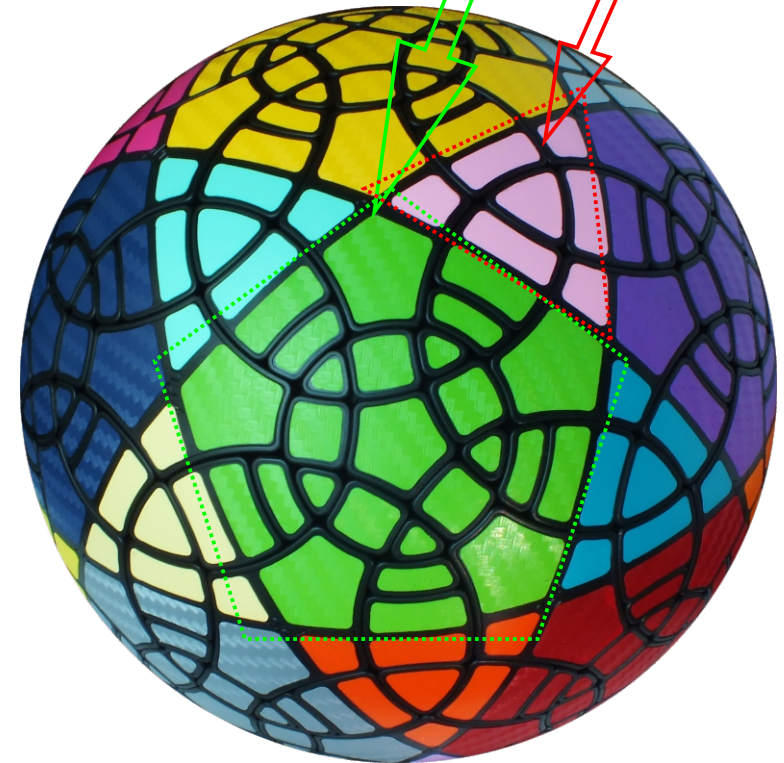
9



10



Clean part surface
before applying stickers



11

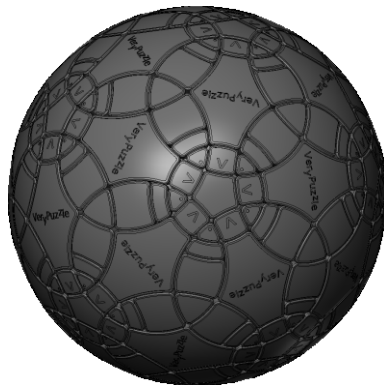
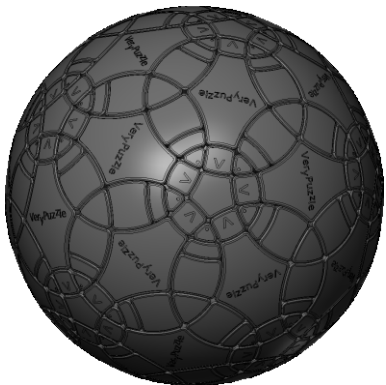
Rotation Rules



R4 symmetry
Turns $180 \cdot n$ degrees
Turns $180 \cdot n + 63.4$ degrees

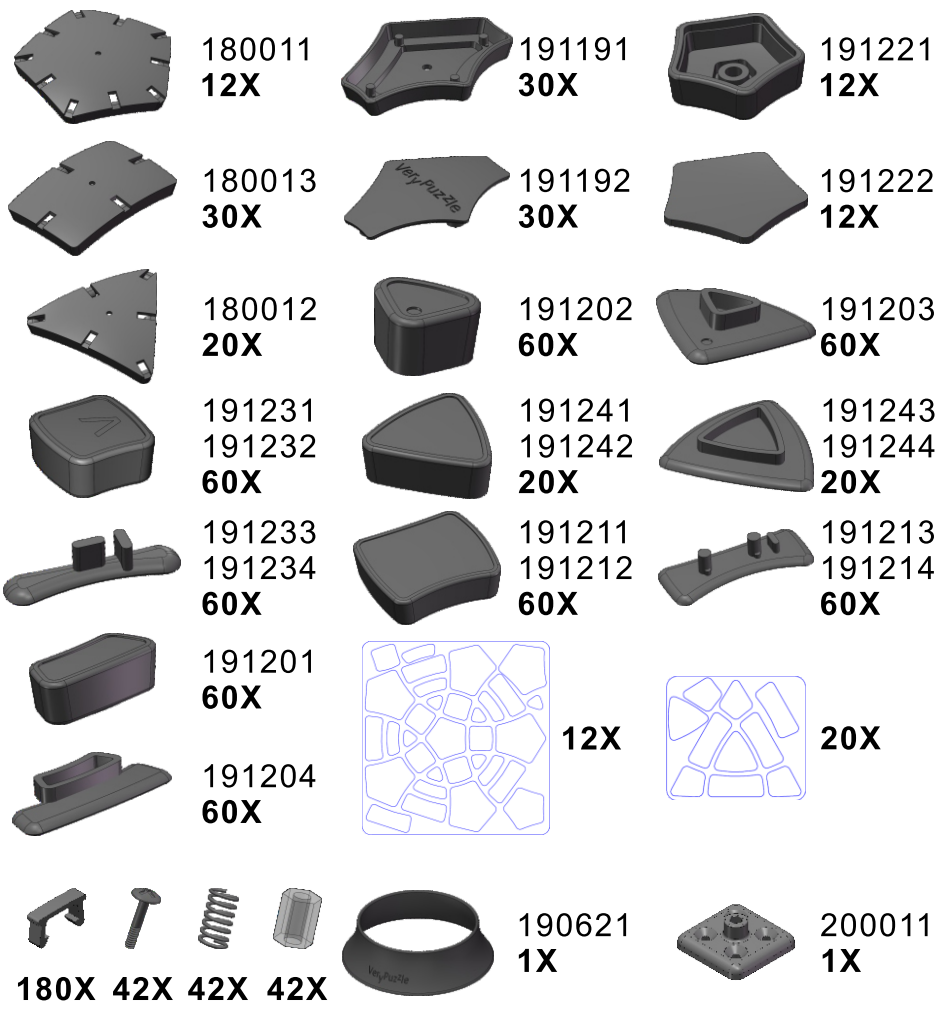
5-fold symmetry
Turns $72 \cdot n$ degrees

Notations and Algorithms



Product Information Card

Product Name	Rhombic Tuttminx F2
Model NO.	#85
Design	VeryPuzzle Co., Ltd(HK)
Manufacturer	VeryPuzzle Co., Ltd(HK)
Year of release	2020
Maximum diameter	145 mm
Visible moving parts	302 pcs
Coloring strategy	mixed Voronoi & Delauney
Number of colors	32 colors
Sticker type	textured, uniform matte
Sticker protection	Yes
Number of sticker pieces	452 pcs
Axis & Symmetry	D(C5)+RT(R4)
Maximum parts shared between two axes	4 parts
In-core spring	Yes
Adjustable tension	No
Technical Name	D1RT5-M5-F2
Topological Print	D15RT25.5
Core specification	DIRT130



Customer Service

1. support@verypuzzle.com

