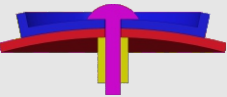
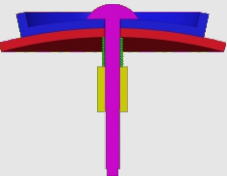
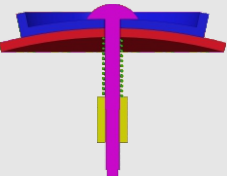
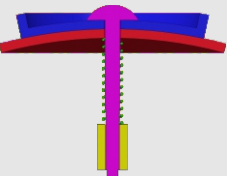


How to tighten the screws

Find your model in the table

Assembly section	Tightness	Models
	tight (no spring)	#61,#75
	tight (spring in green) (Short screw is recommended)	#72,#73,#77,#87,#88 #89
	medium (spring in green)	#94,#93,#90,#86,#85 #83,#82,#81,#80,#79 #78,#76,#71,#70,#69 #68,#67,#66,#65,#64 #63,#62,#60,#59
	loose (spring in green)	Mostly applicable to 'medium' category. Not recommended in general.

1. Tighter is usually better since the spring we provide is soft.
2. Early products had been using longer screws. You can either insert thick washer when necessary or request for short screws in the <Accessory & free parts> directory at our homepage:
<https://www.verypuzzle.com>

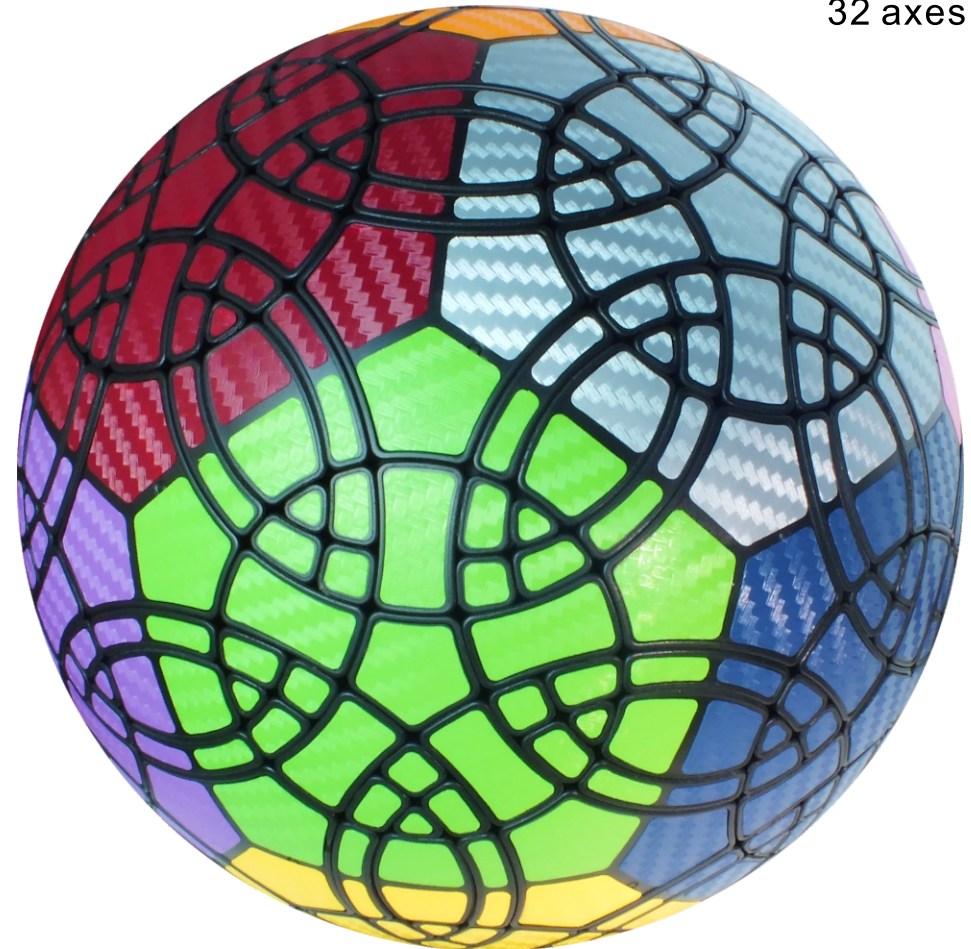
VeryPuzzle
2024/04

VeryPuzzle

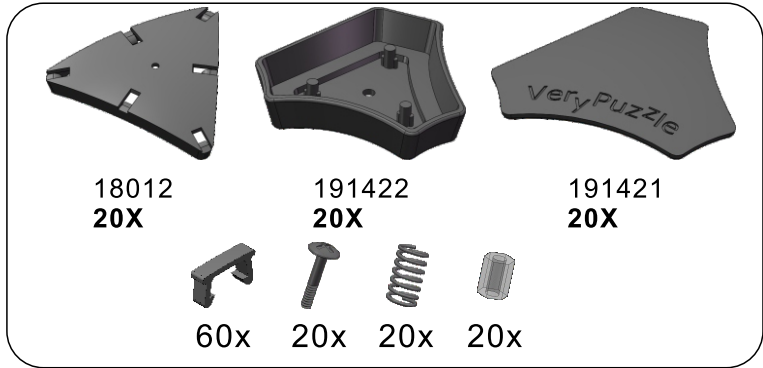


Tuttminx F1
D113-M5-F1
#88

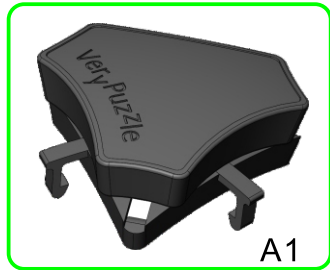
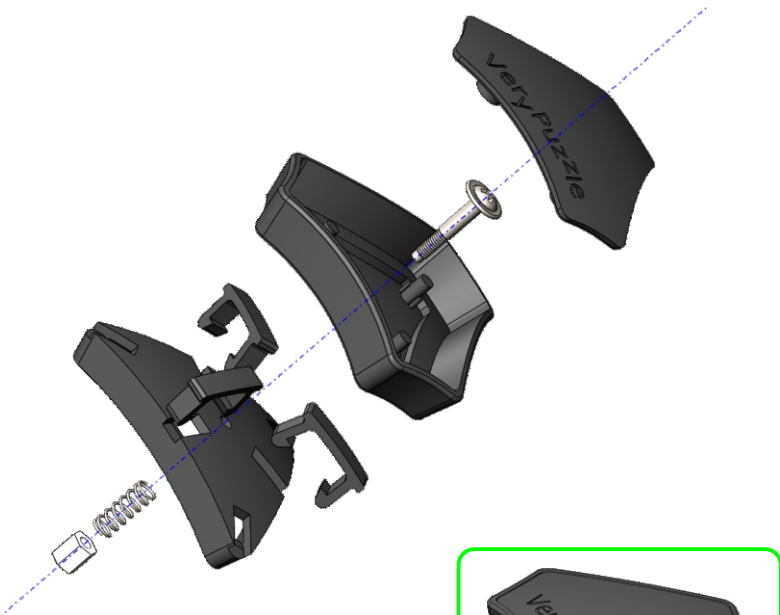
1000+ parts
32 axes



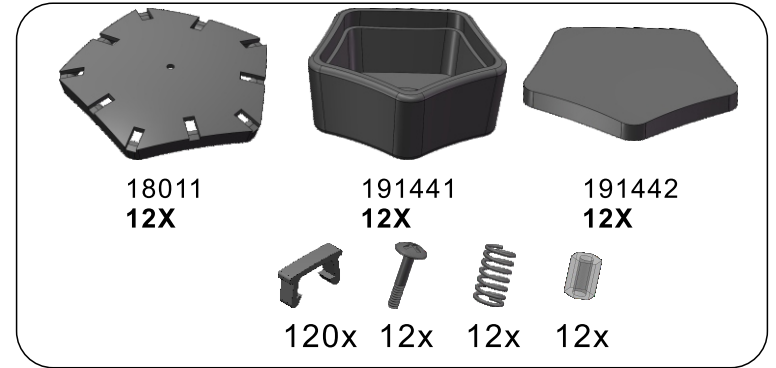
1



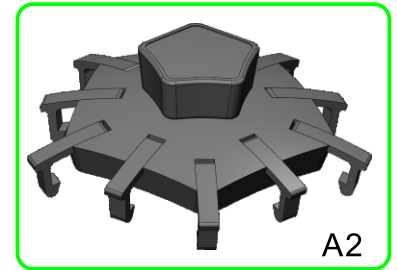
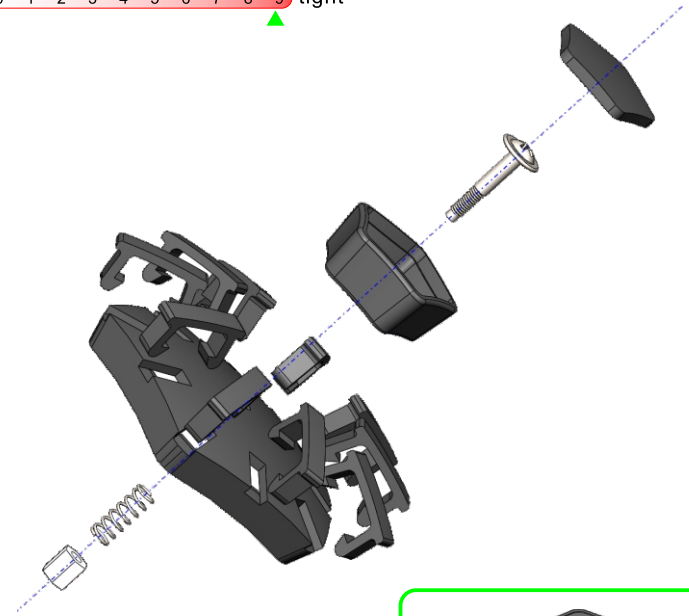
screw tension
no tension 0 1 2 3 4 5 6 7 8 9 tight



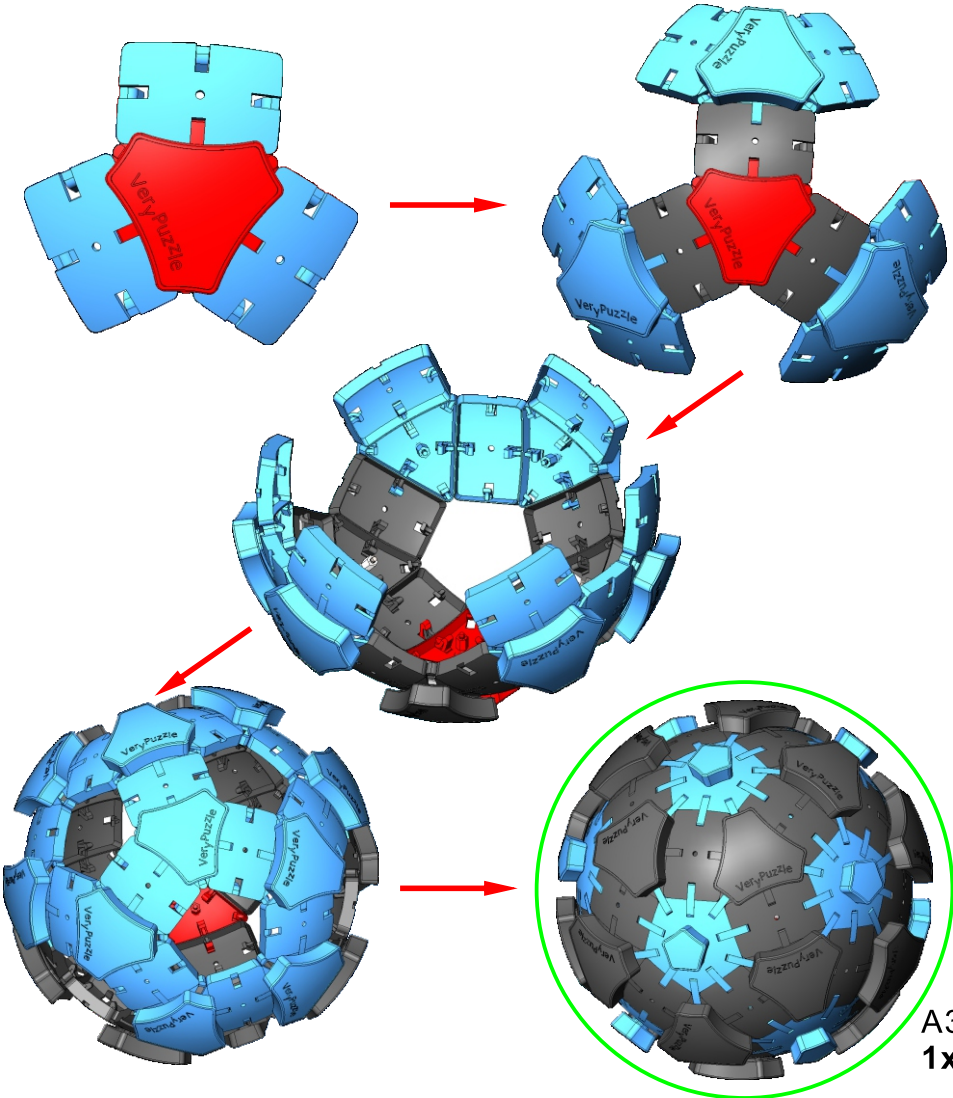
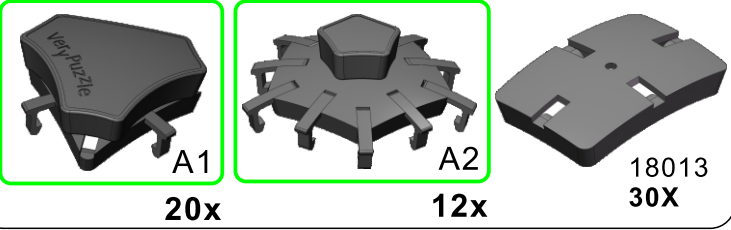
2



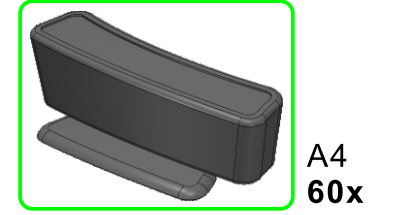
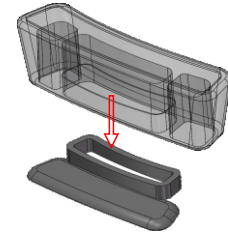
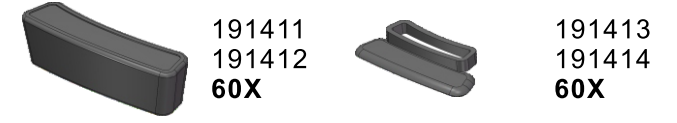
screw tension
no tension 0 1 2 3 4 5 6 7 8 9 tight



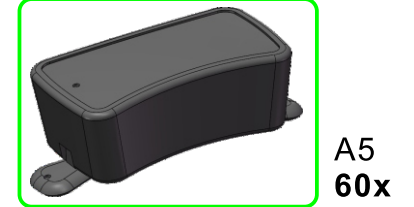
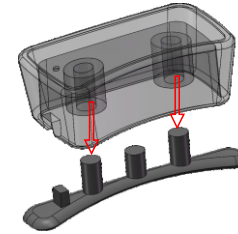
3



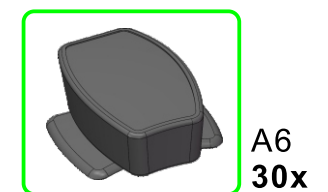
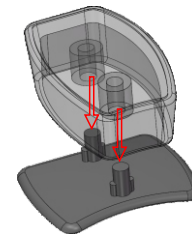
4



5



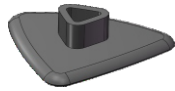
6



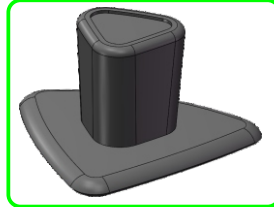
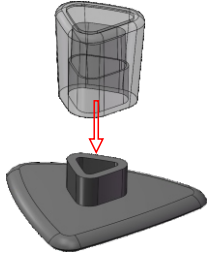
7



191454
60X



191456
60X



A7
60x

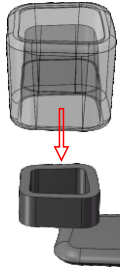
8



191453
60X



191457
60X

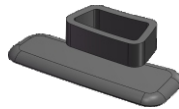


A8
60x

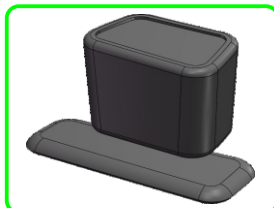
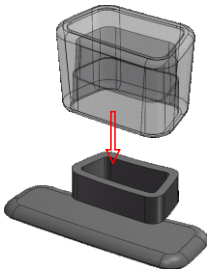
9



191452
60X



191455
60X

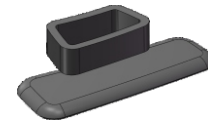


A9
60x

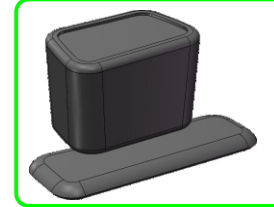
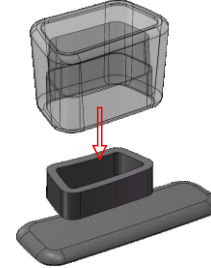
10



191451
60X

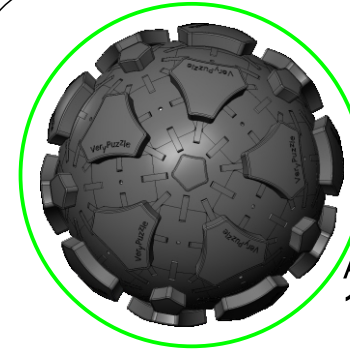


191458
60X

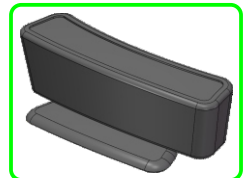


A10
60x

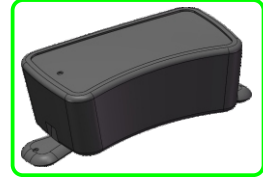
11



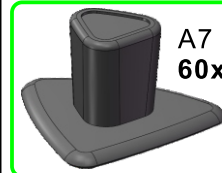
A3
1x



A4
60x



A5
60x



A7
60x



A6
30x



A9
60x

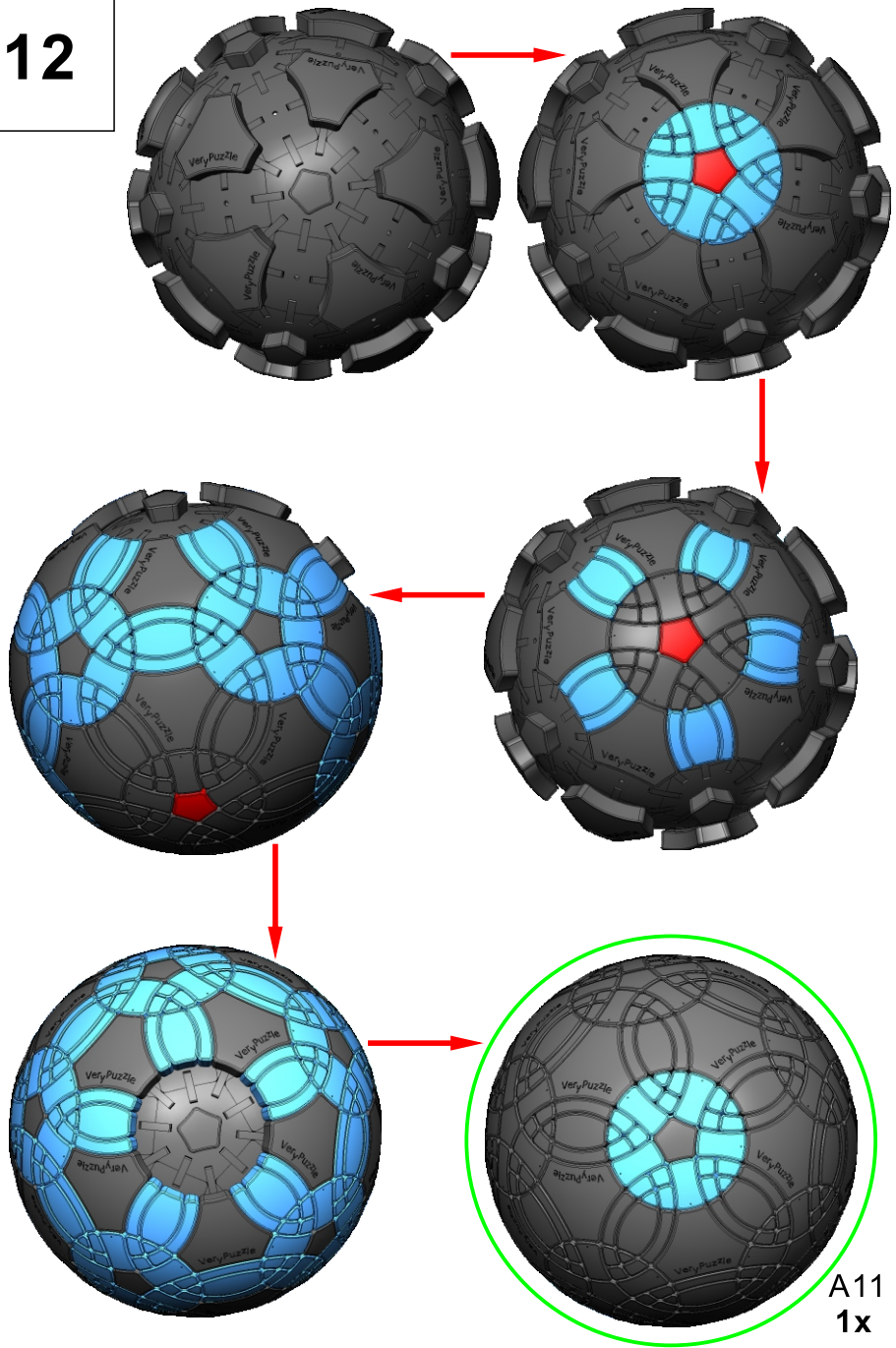


A10
60x



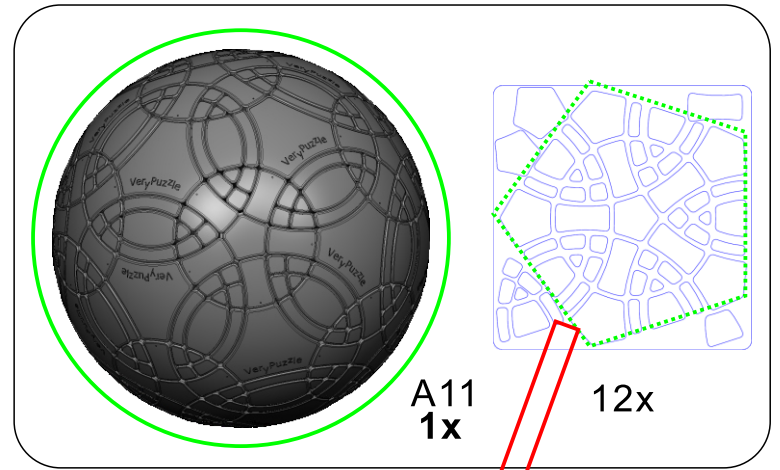
A8
60x

12



A11
1x

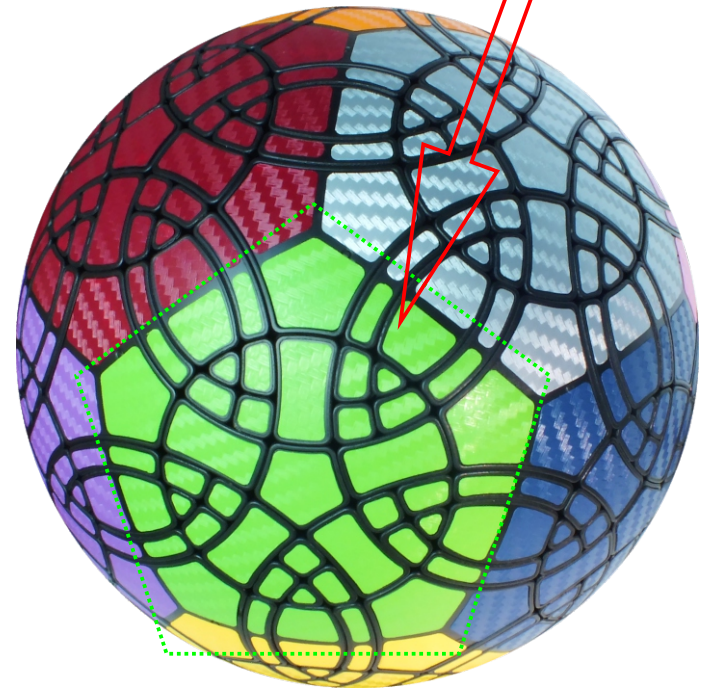
13



A11
1x

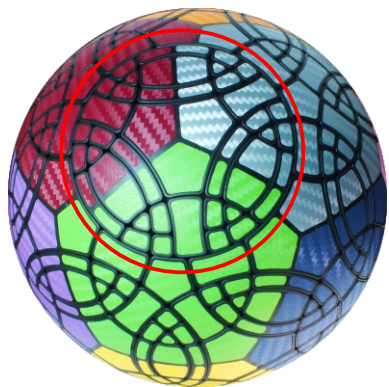
12x

Clean part surface
before applying stickers

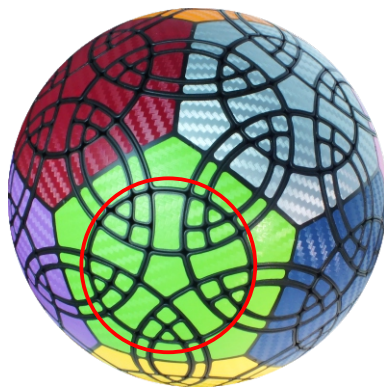


14

Rotation Rules

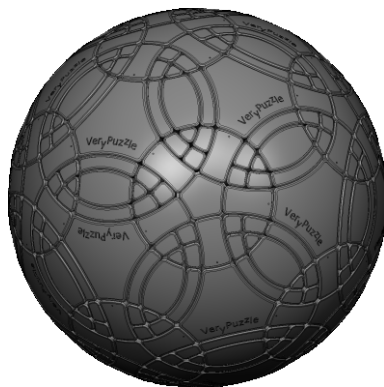
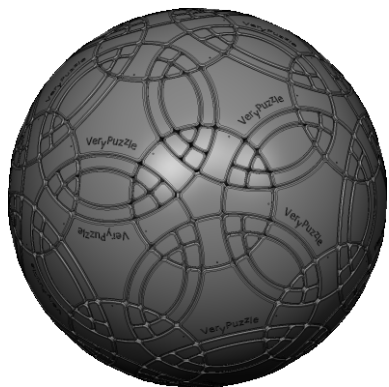


6-fold symmetry
Turns $60 \cdot n$ degrees



5-fold symmetry
Turns $72 \cdot n$ degrees

Notations and Algorithms



Product Information Card

Product Name	Tuttminx F1
Model NO.	#88
Design	VeryPuzzle Co., Ltd(HK)
Manufacturer	VeryPuzzle Co., Ltd(HK)
Year of release	2020
Maximum diameter	145 mm
Visible moving parts	362 pcs
Coloring strategy	simplified Voronoi
Number of colors	12 colors
Sticker type	textured
Sticker protection	Yes
Number of sticker pieces	492 pcs
Axis & Symmetry	$D(C5)+I(C6)$
Maximum parts shared between two axes	11 parts
In-core spring	Yes
Adjustable tension	No
Technical Name	D1I3-M5-F1
Topological Print	D22I31
Core specification	DIRT130



Customer Service

1. support@verypuzzle.com

