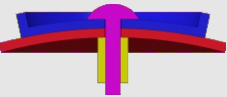
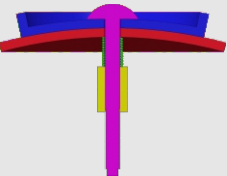
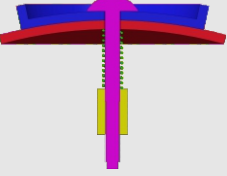
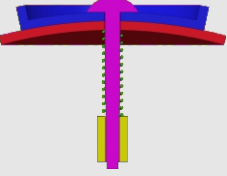


How to tighten the screws

Find your model in the table

Assembly section	Tightness	Models
	tight (no spring)	#61, #75
	tight (spring in green) (Short screw is recommended)	#72, #73, #77, #87, #88 #89
	medium (spring in green)	#94, #93, #90, #86, #85 #83, #82, #81, #80, #79 #78, #76, #71, #70, #69 #68, #67, #66, #65, #64 #63, #62, #60, #59
	loose (spring in green)	Mostly applicable to 'medium' category. Not recommended in general.

1. Tighter is usually better since the spring we provide is soft.
2. Early products had been using longer screws. You can either insert thick washer when necessary or request for short screws in the <Accessory & free parts> directory at our homepage:
<https://www.verypuzzle.com>

VeryPuzzle
2024/04

VeryPuzzle



Giga Rhombic Tuttminx
D1RT5-M5-L2
#75

2200+ parts
42 axes



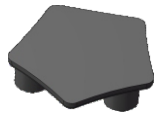
1



180031
12X



190712
12X



190711
12X



120x

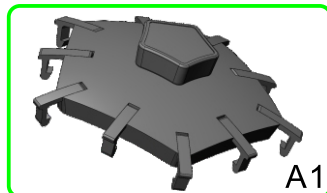
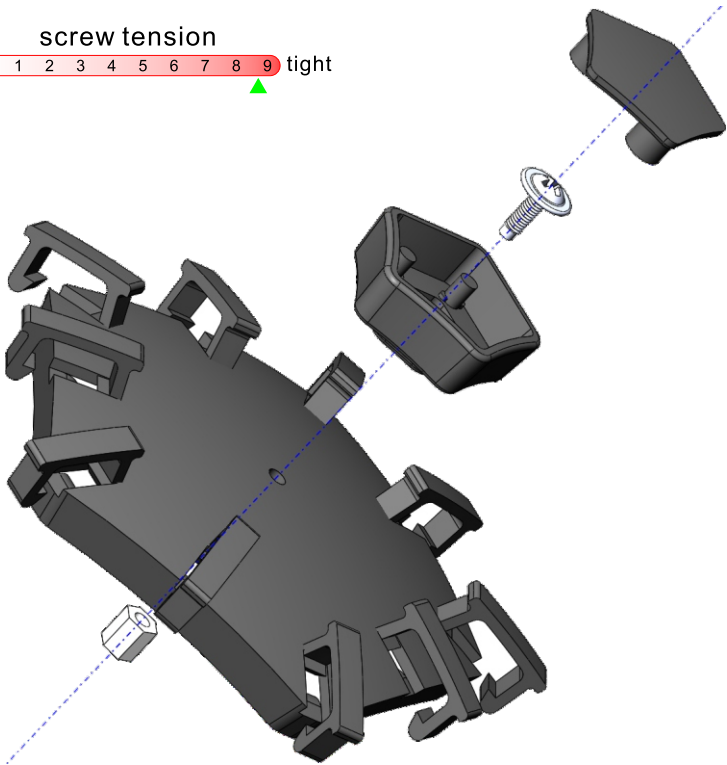


12x



12x

screw tension
no tension 0 1 2 3 4 5 6 7 8 9 tight

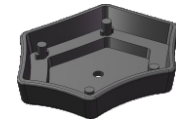


A1
12x

2



180033
30X



1906312
30X



190631
30X



60x

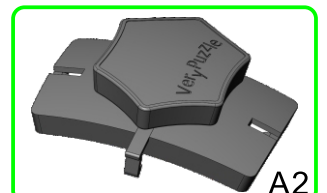
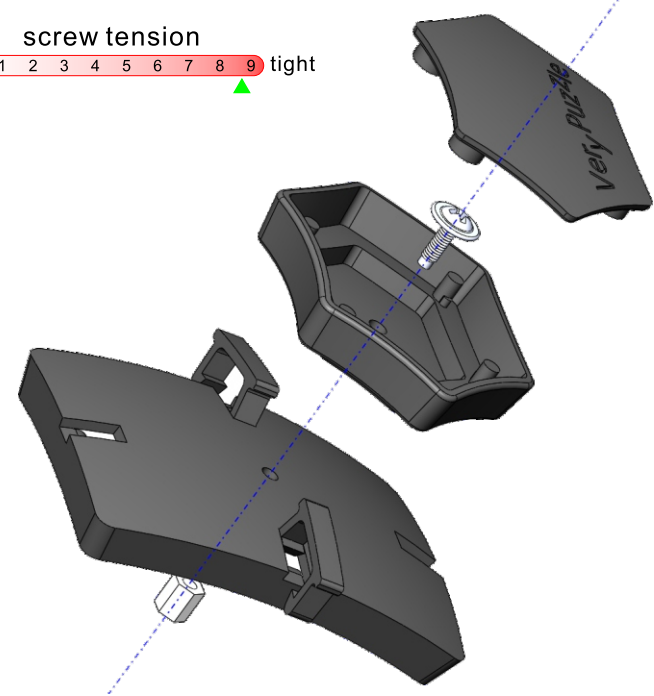


30x



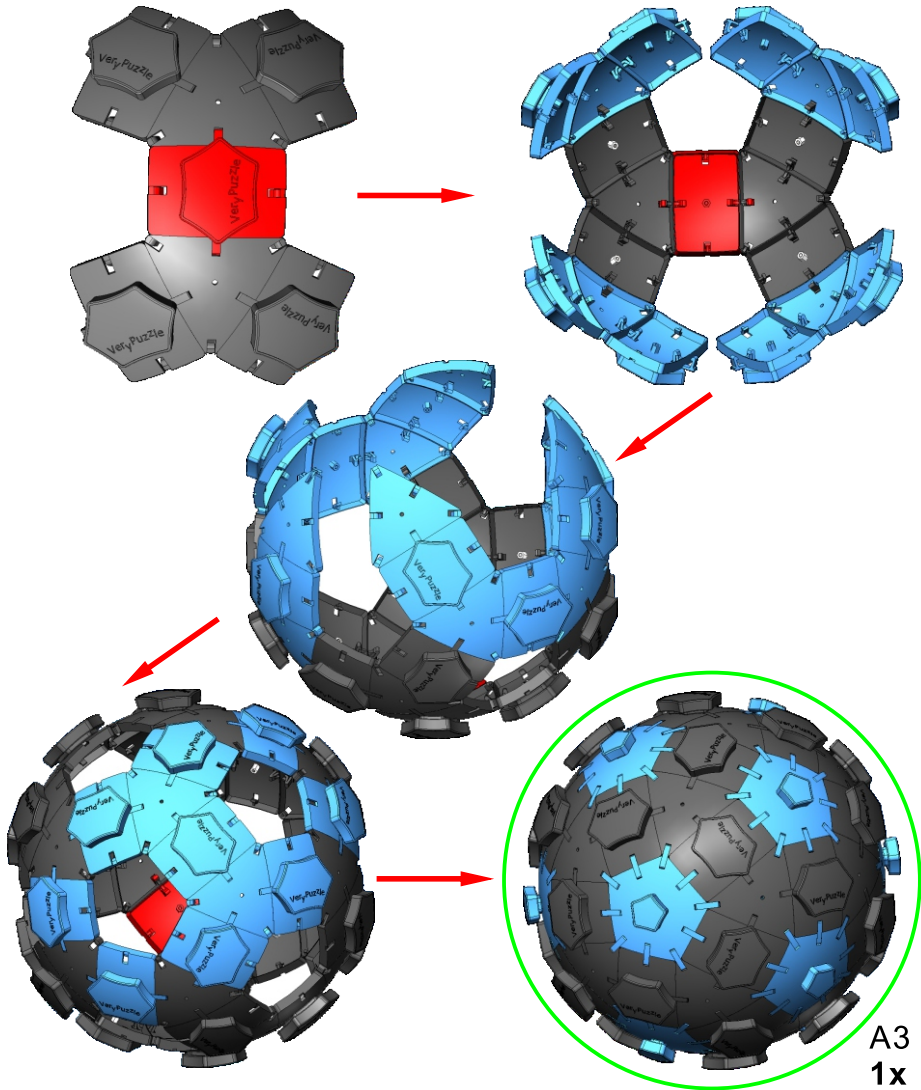
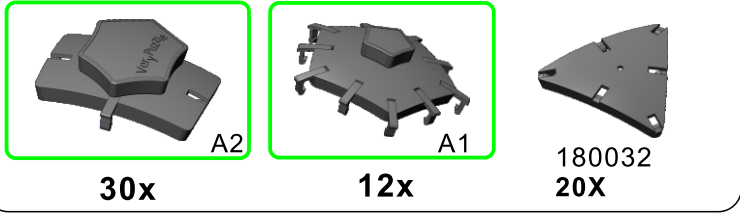
30x

screw tension
no tension 0 1 2 3 4 5 6 7 8 9 tight

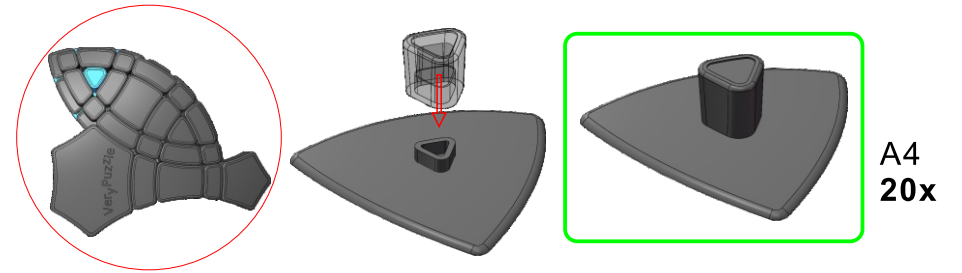
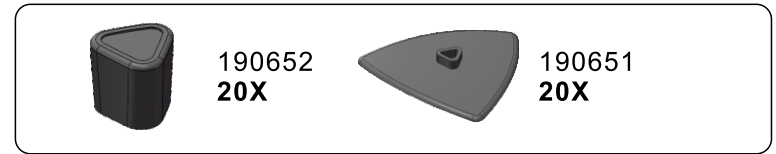


A2
30x

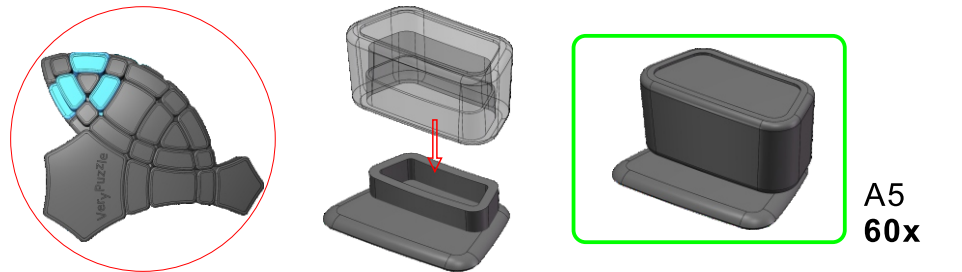
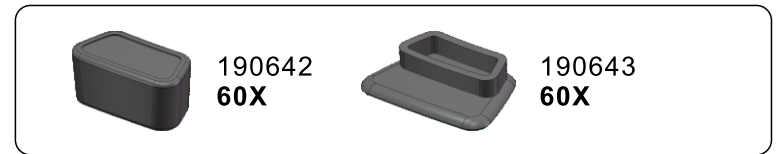
3



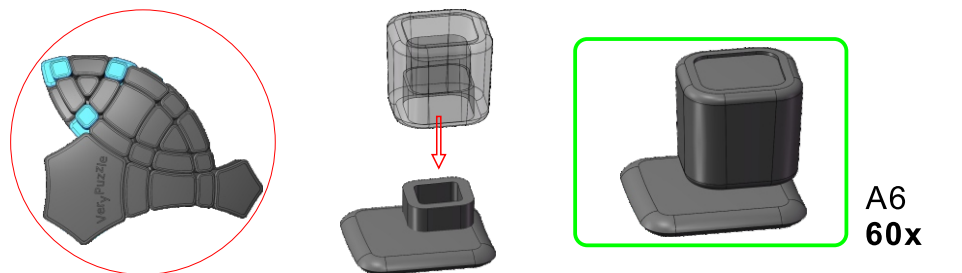
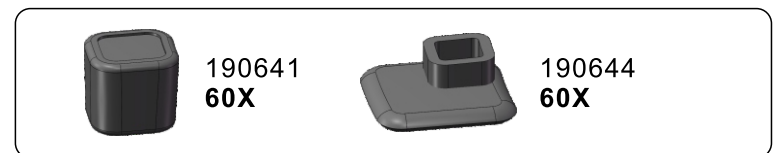
4



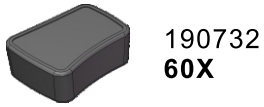
5



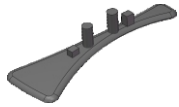
6



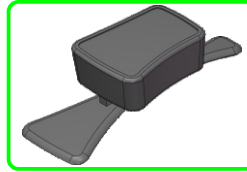
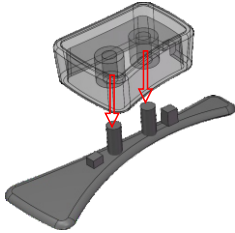
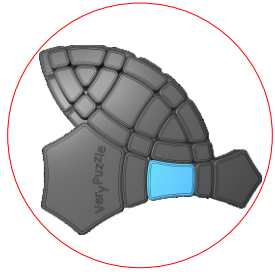
7



190732
60X



190731
60X

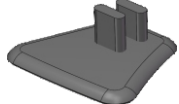


A7
60x

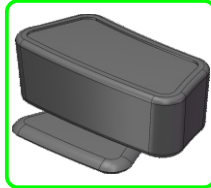
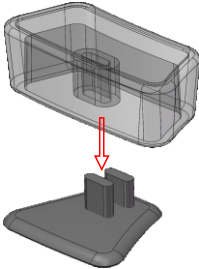
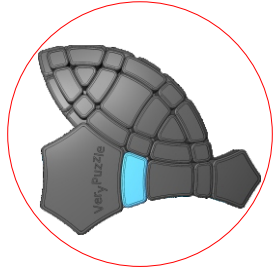
8



190721
60X



190724
60X



A8
60x

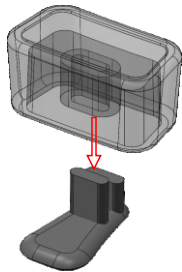
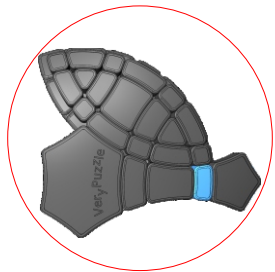
9



190722
60X



190723
60X

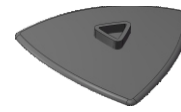


A9
60x

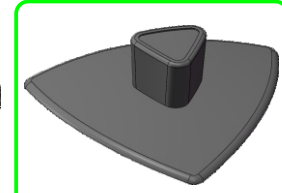
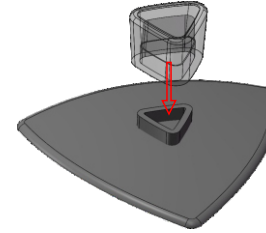
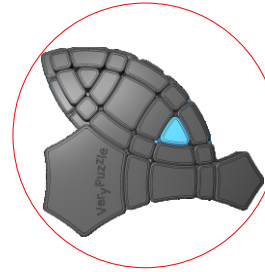
10



190692
60X



190691
60X

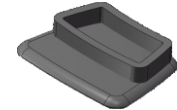


A10
60x

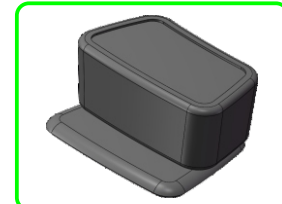
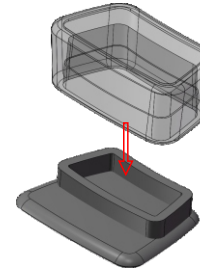
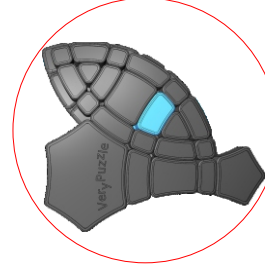
11



190682
60X



190681
60X



A11
60x

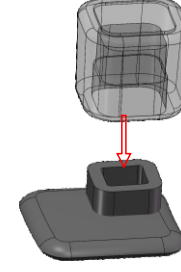
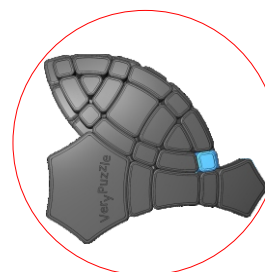
12



190683
60X

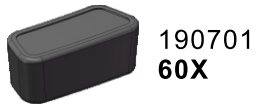


190684
60X

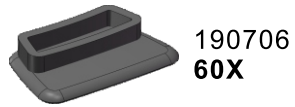


A12
60x

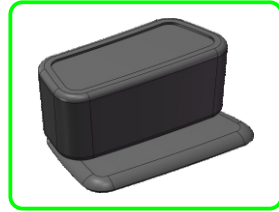
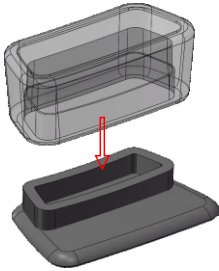
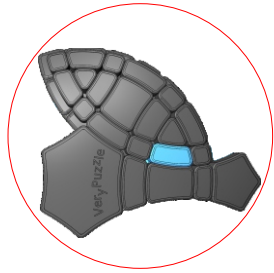
13



190701
60X

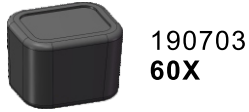


190706
60X

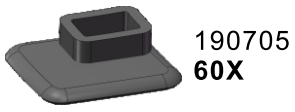


A13
60x

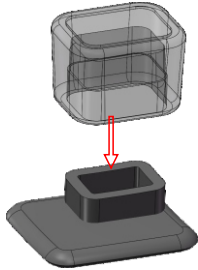
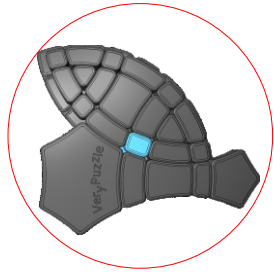
14



190703
60X



190705
60X

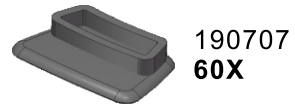


A14
60x

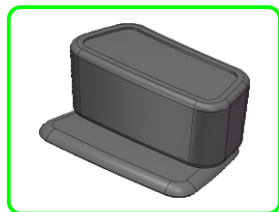
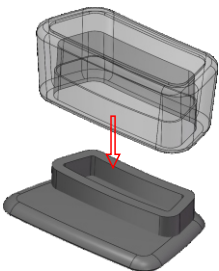
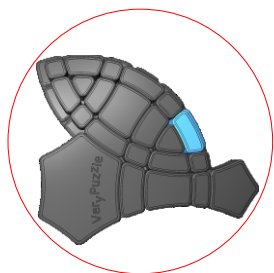
15



190702
60X



190707
60X



A15
60x

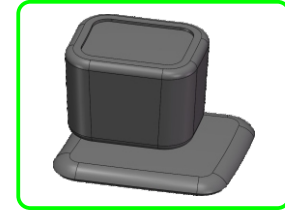
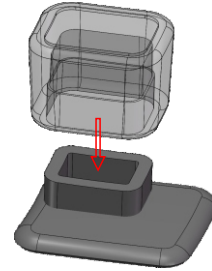
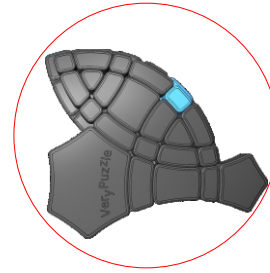
16



190704
60X

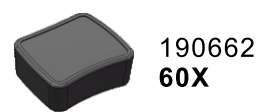


190708
60X

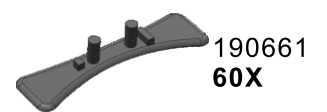


A16
60x

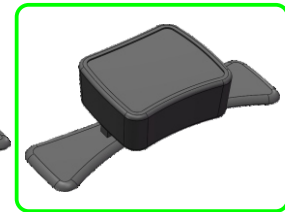
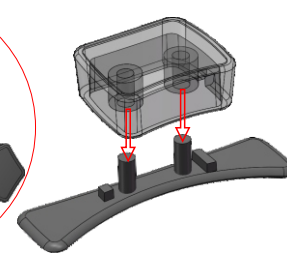
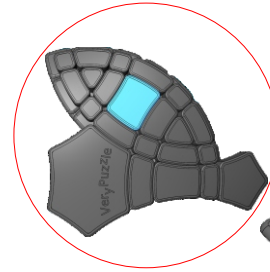
17



190662
60X

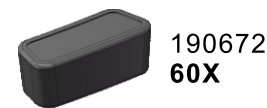


190661
60X

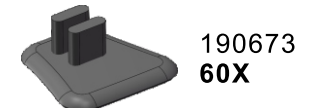


A17
60x

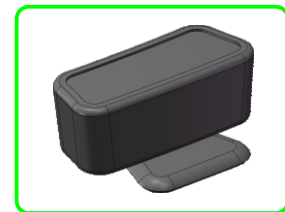
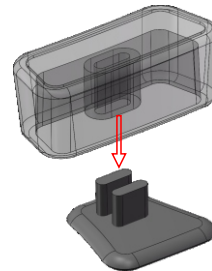
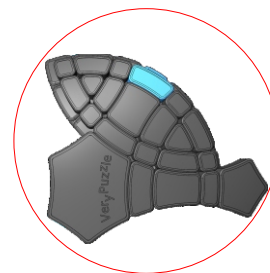
18



190672
60X



190673
60X



A18
60x

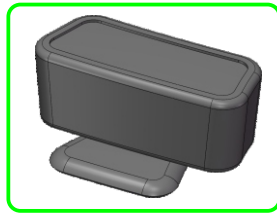
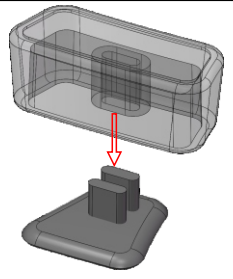
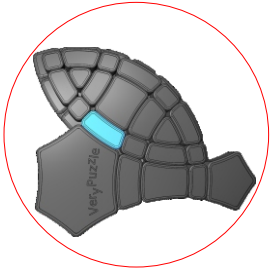
19



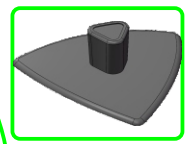
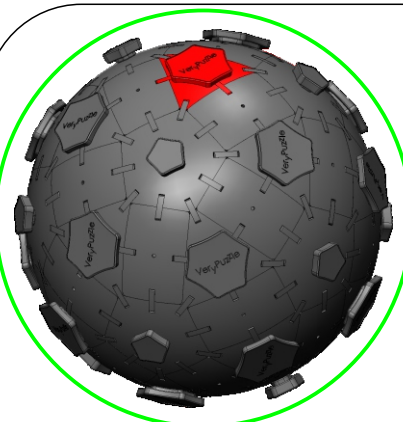
190671
60X



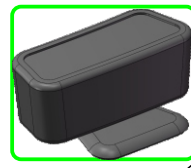
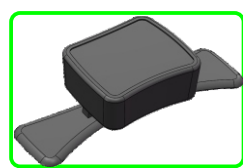
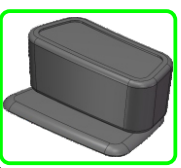
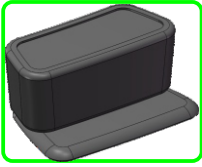
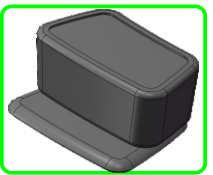
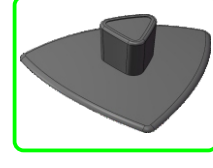
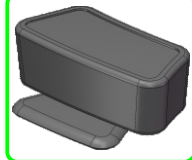
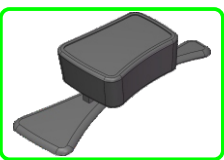
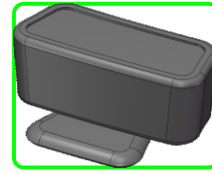
190674
60X



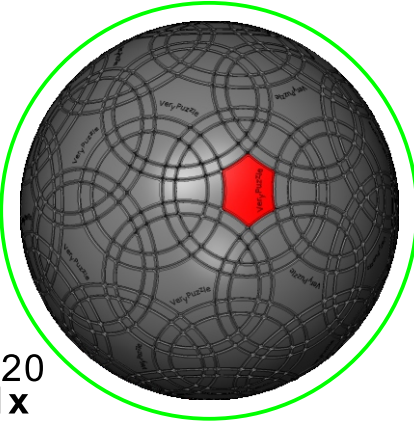
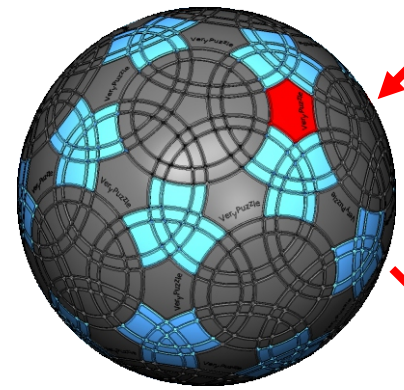
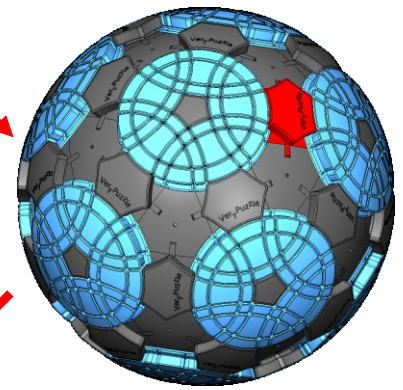
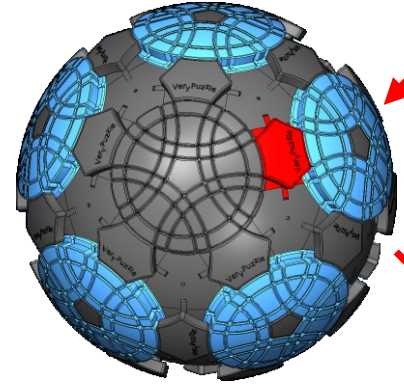
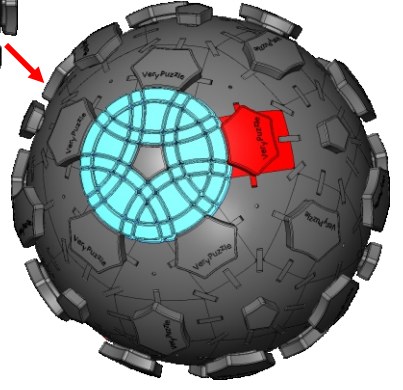
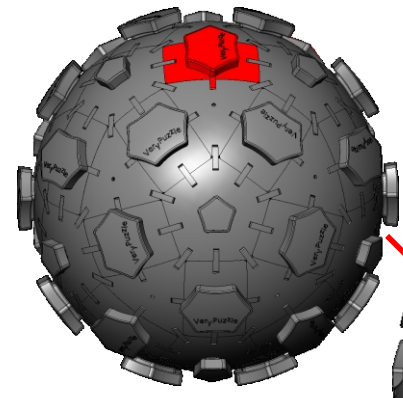
A19
60x



20

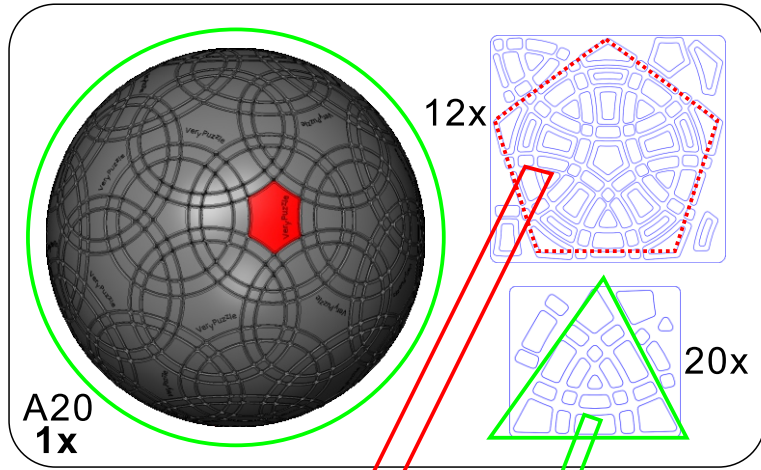


20

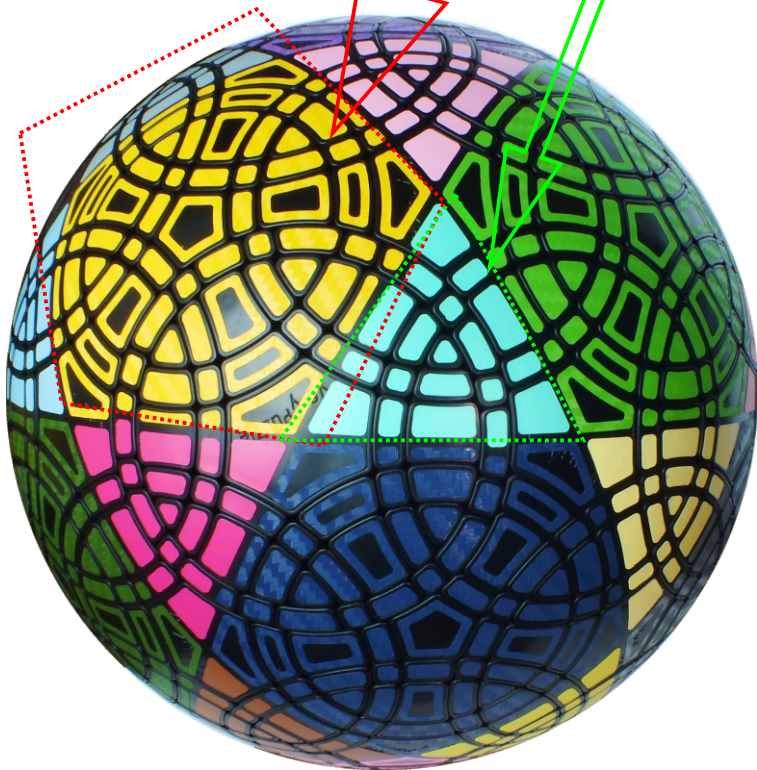


A20
1x

21

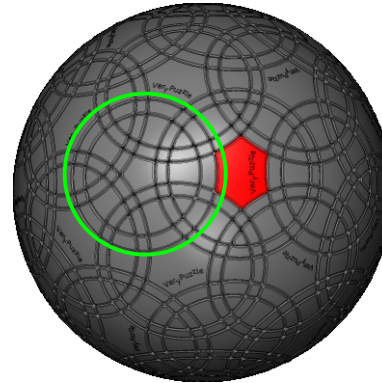


Clean part surface before applying stickers

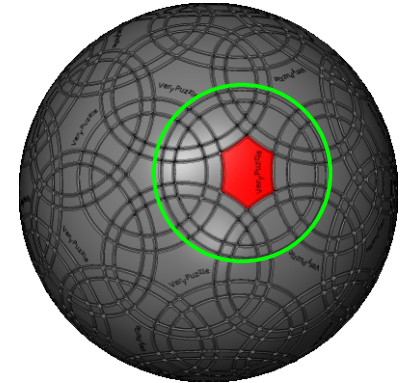


22

Rotation Rules

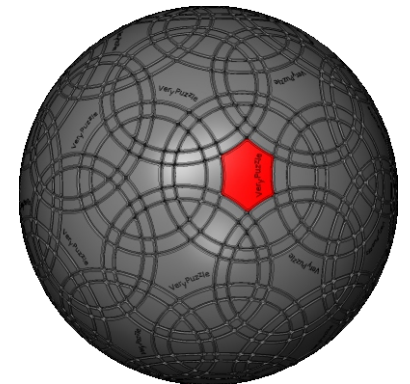
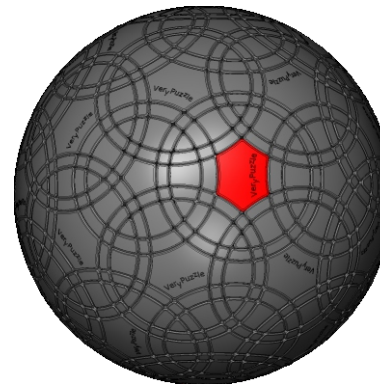


5-fold symmetry
Turns $72 \cdot n$ degrees



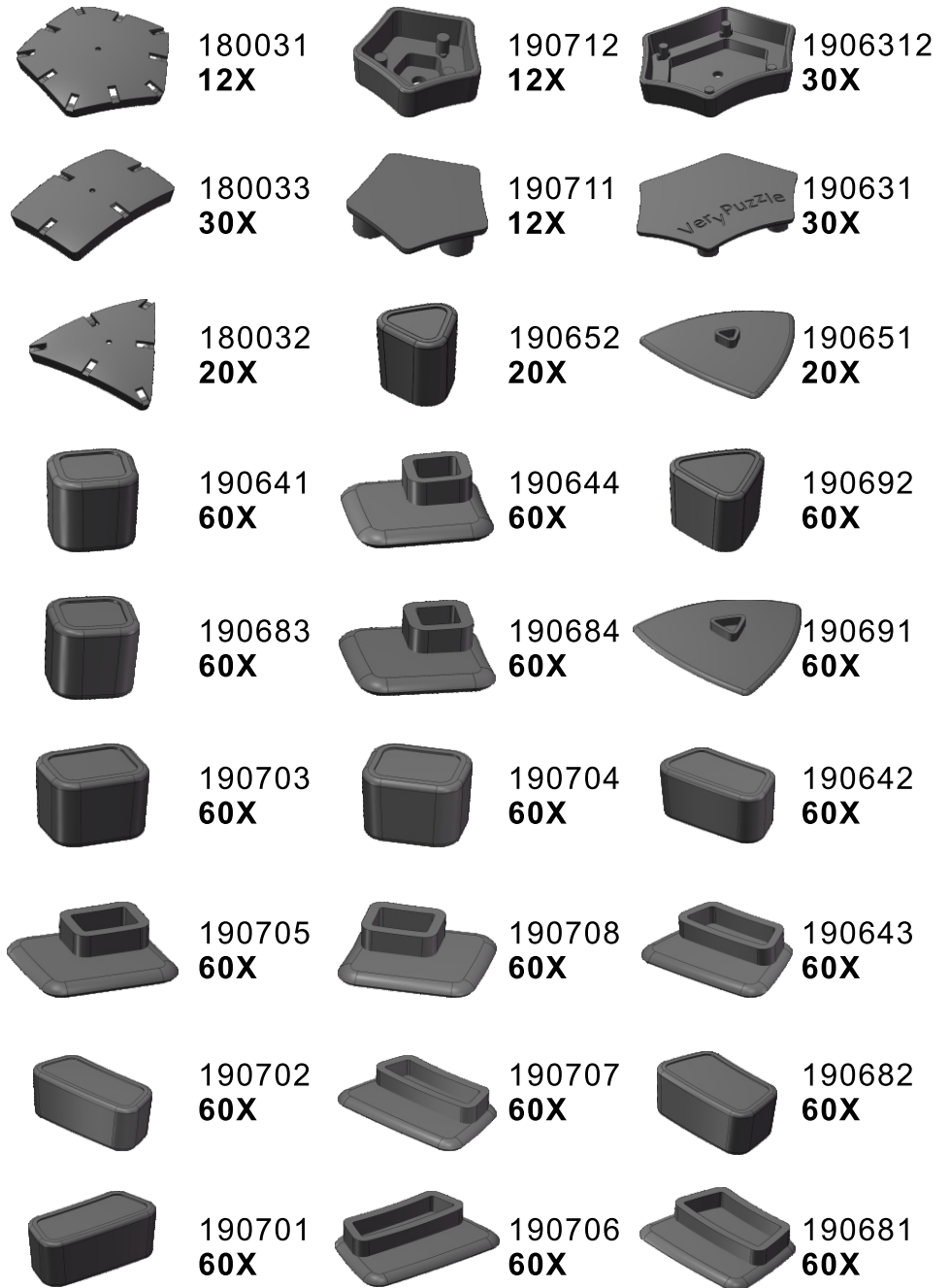
R4 symmetry
Turns $180 \cdot n$ degrees
Turns $180 \cdot n \pm 63.4$ degrees

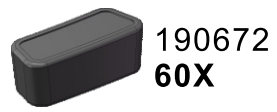
Notations and Algorithms



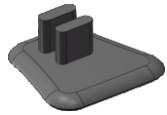
Product Information Card

Product Name	Giga Rhombic Tuttminx
Model NO.	#75
Design	VeryPuzzle Co., Ltd(HK)
Manufacturer	VeryPuzzle Co., Ltd(HK)
Year of release	2020
Maximum diameter	200 mm
Visible moving parts	1097 pcs
Coloring strategy	mixed Voronoi & Delauney
Number of colors	32 colors
Sticker type	textured, uniform matt
Sticker protection	Yes
Number of sticker pieces	1232 pcs
Axis & Symmetry	D(C5)+RT(R4)
Maximum parts shared between two axes	3 parts
In-core spring	Yes
Adjustable tension	No
Technical Name	D1RT5-M5-L2
Topological Print	D{24,28} {23,27}
Core specification	DIRT180





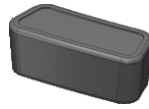
190672
60X



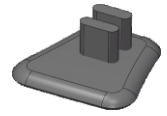
190673
60X



190722
60X



190671
60X



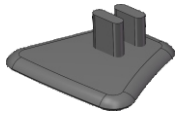
190674
60X



190723
60X



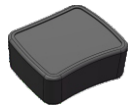
190721
60X



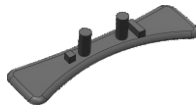
190724
60X



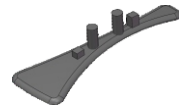
190732
60X



190662
60X



190661
60X



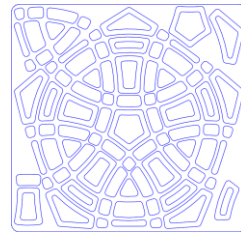
190731
60X



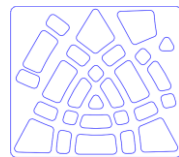
180X 42X 42X



190621
1X



12x



20x

Customer Service

1. support@verypuzzle.com



2. **VeryPuzzle**