
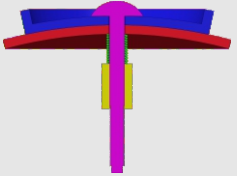
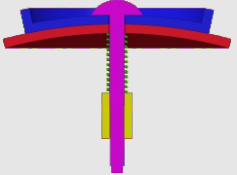
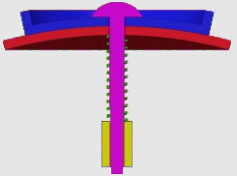


## How to tighten the screws

Find your model in the table



Assembly section	Tightness	Models
	tight (no spring)	#61,#75
	tight (spring in green)  (Short screw is recommended)	#72,#73,#77,#87,#88 #89
	medium (spring in green)	#94,#93,#90,#86,#85 #83,#82,#81,#80,#79 #78,#76,#71,#70,#69 #68,#67,#66,#65,#64 #63,#62,#60,#59
	loose (spring in green)	Mostly applicable to 'medium' category.  Not recommended in general.

1. Tighter is usually better since the spring we provide is soft.

2. Early products had been using longer screws. You can either insert thick washer when necessary or request for short screws in the <Accessory & free parts> directory at our homepage:  
<https://www.verypuzzle.com>

VeryPuzzle  
2024/04

# VeryPuzzle

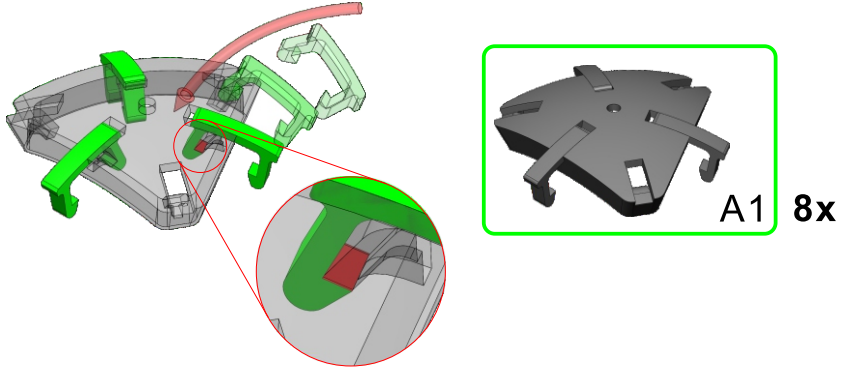
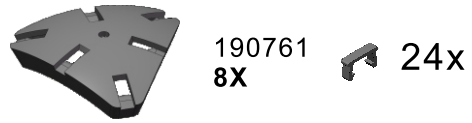


**C103-M5**  
**#86**

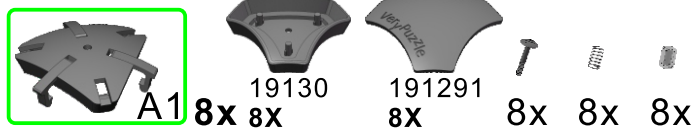
200+ parts  
14 axis



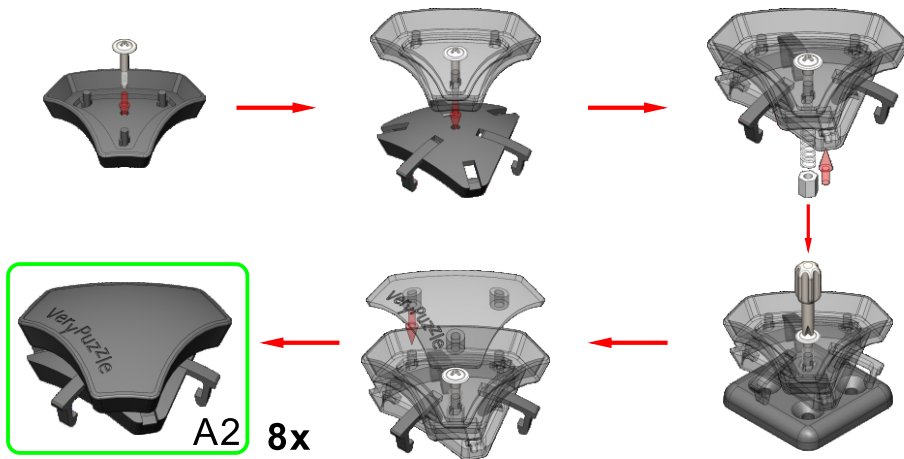
1



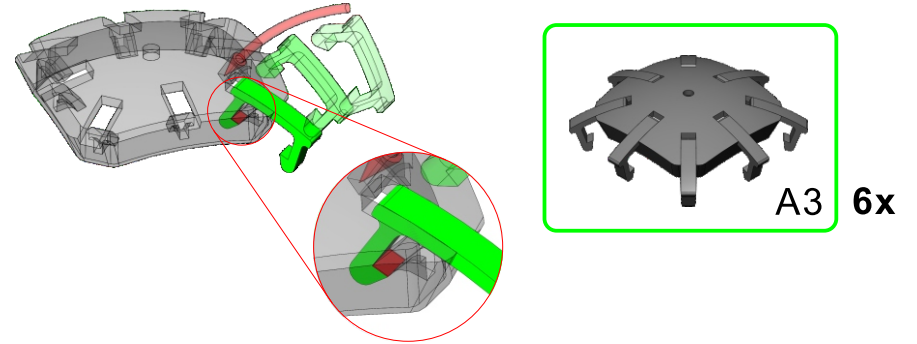
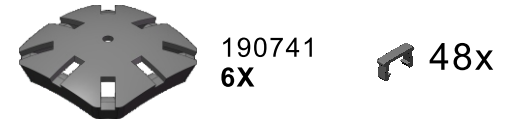
2



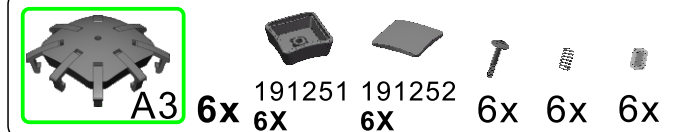
screw tension  
no tension 0 1 2 3 4 5 6 7 8 9 tight



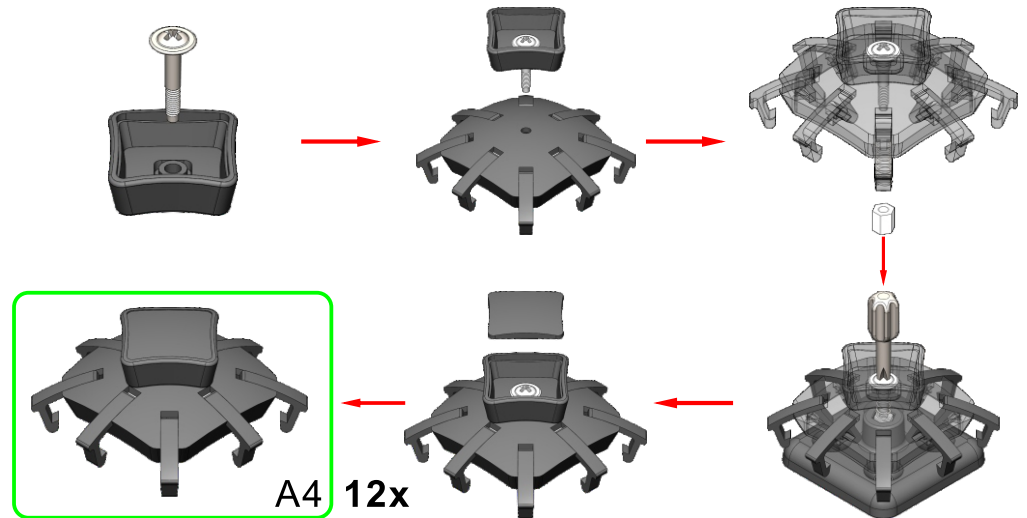
3



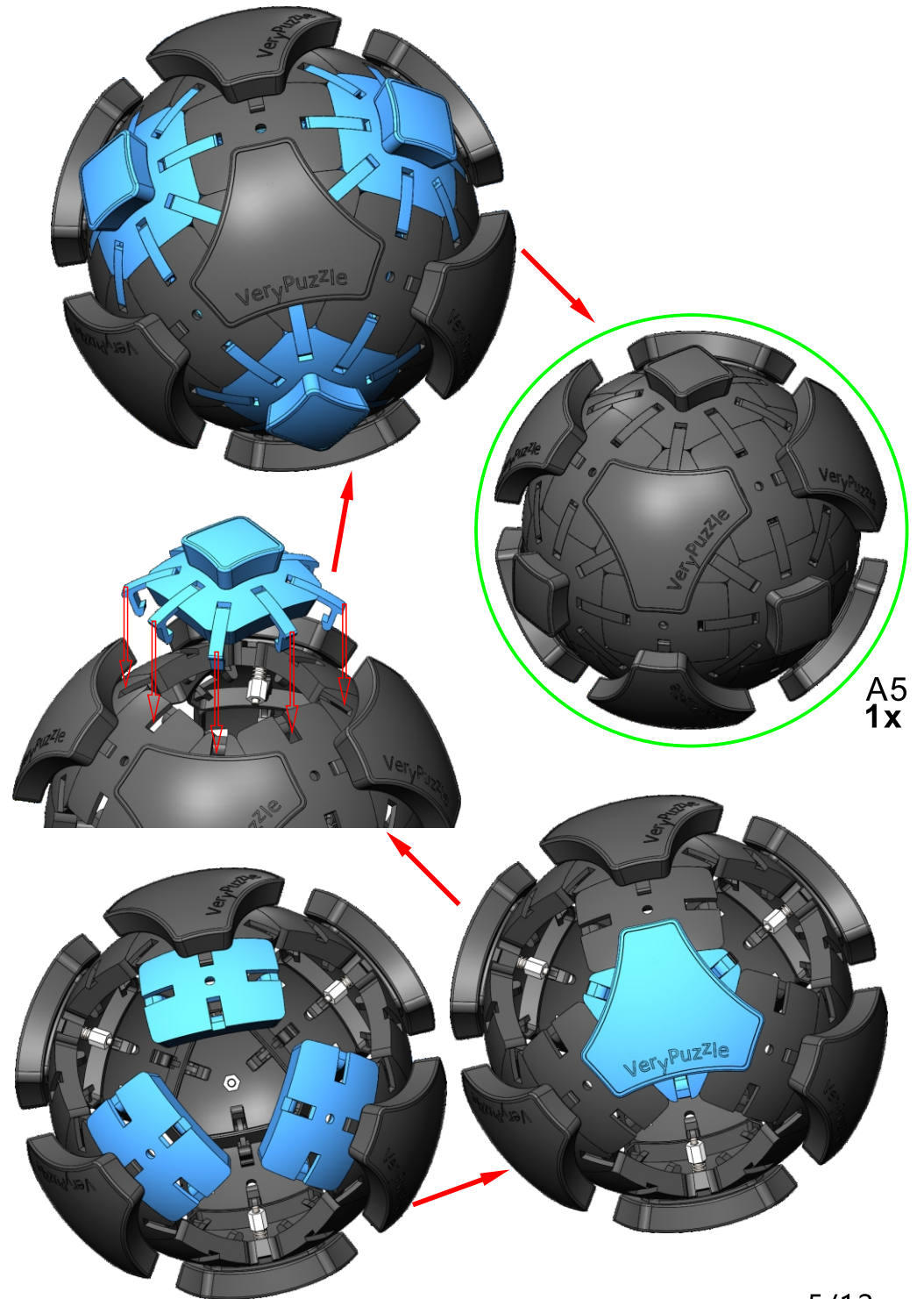
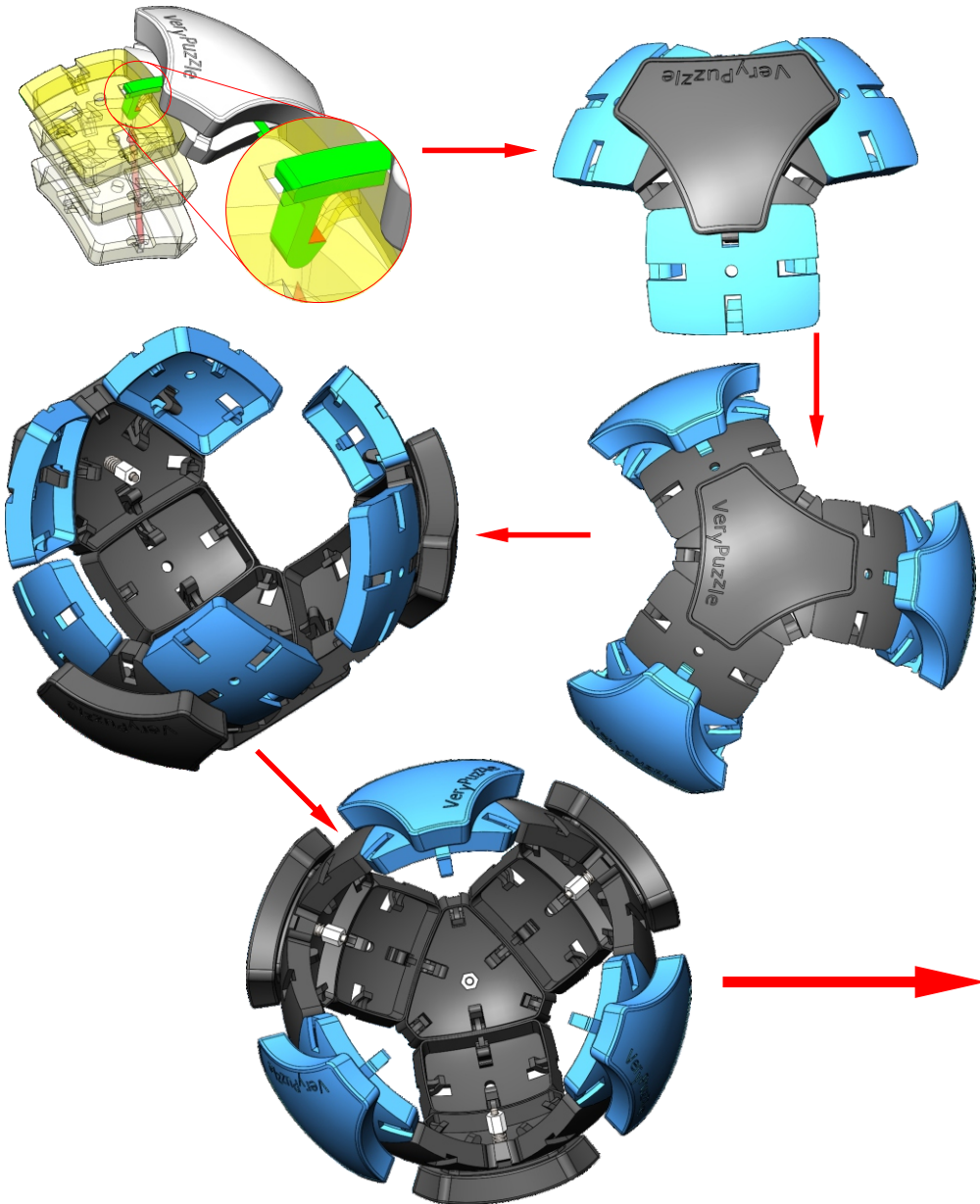
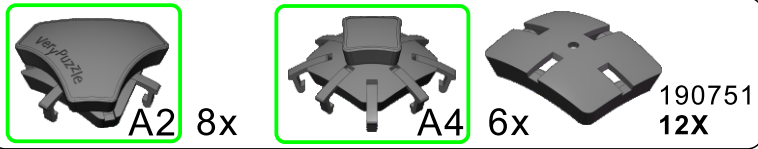
4



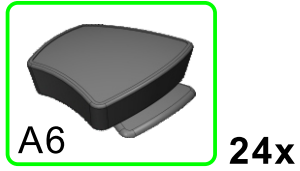
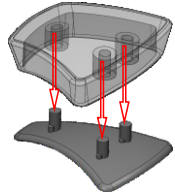
screw tension  
no tension 0 1 2 3 4 5 6 7 8 9 tight



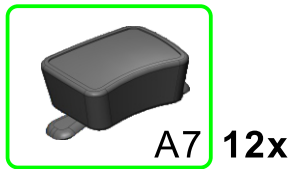
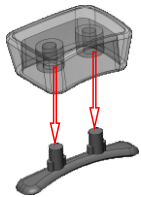
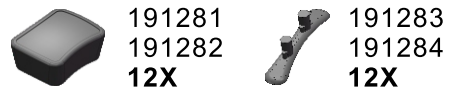
5



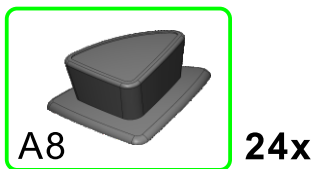
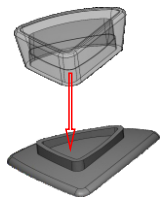
6



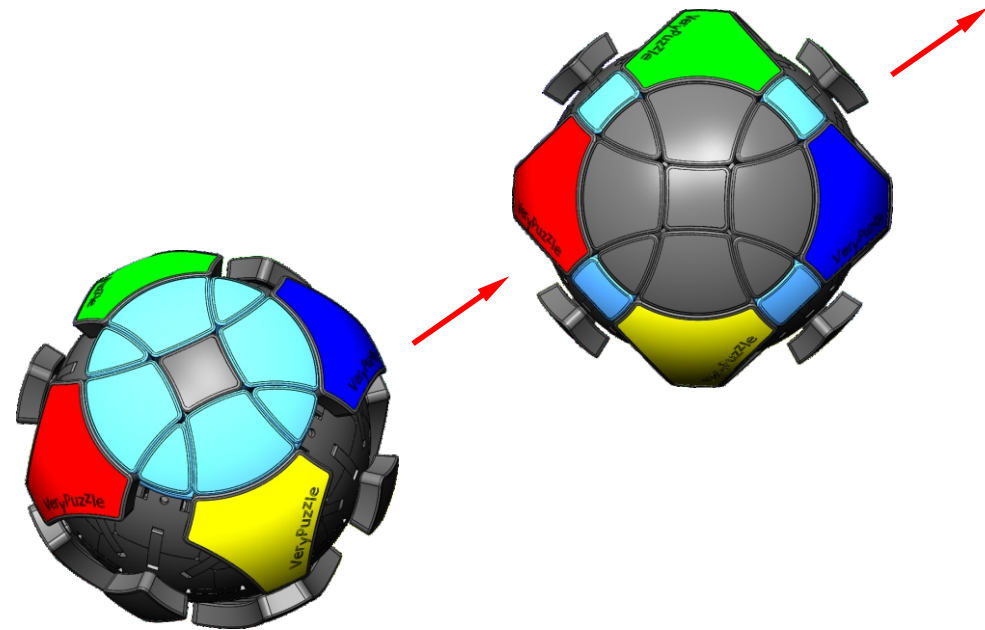
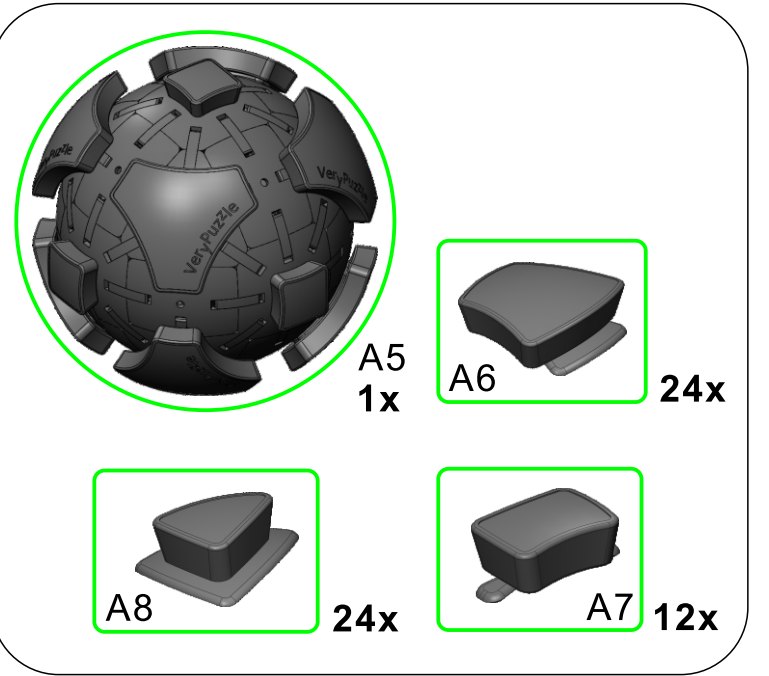
7



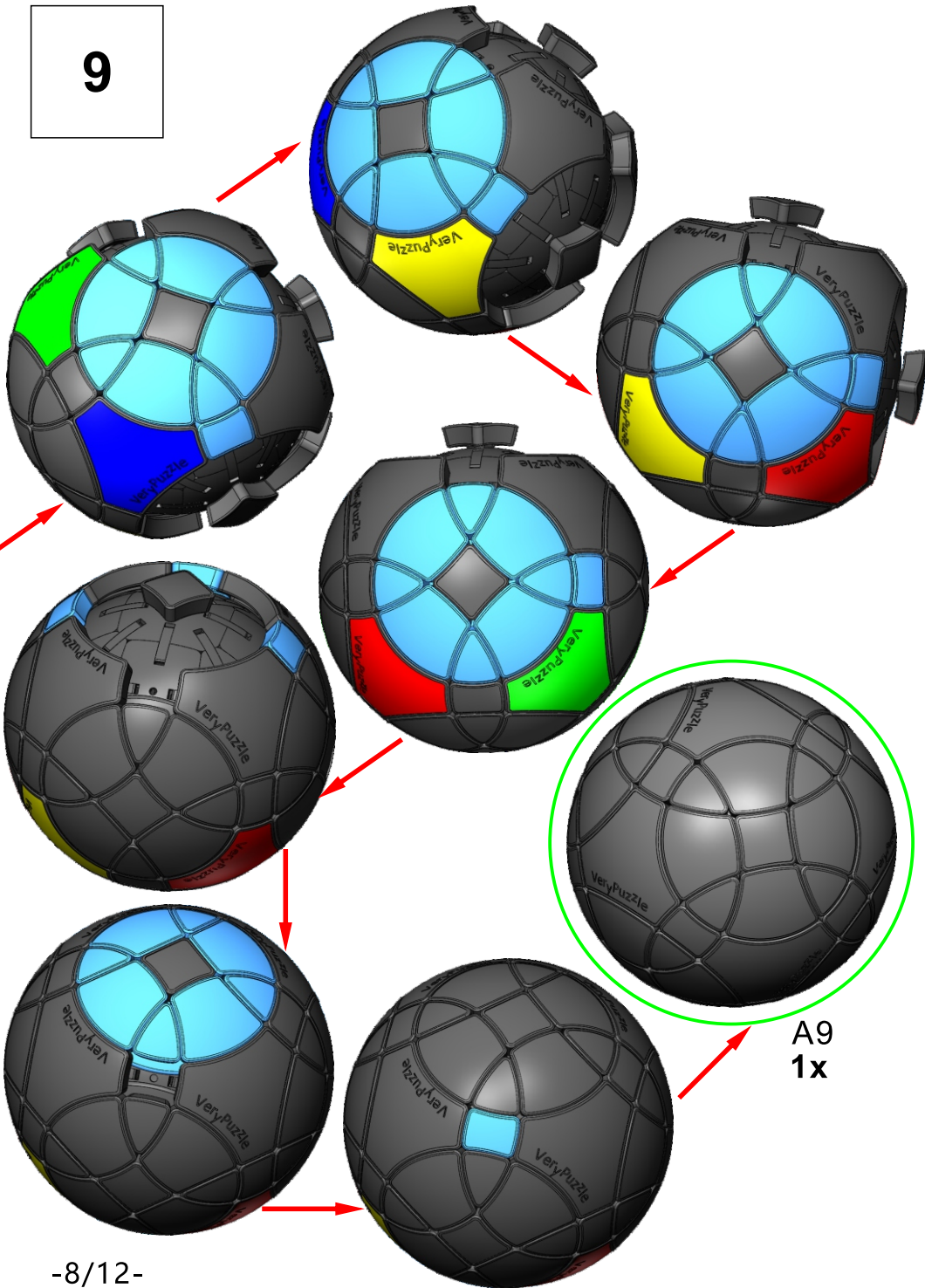
8



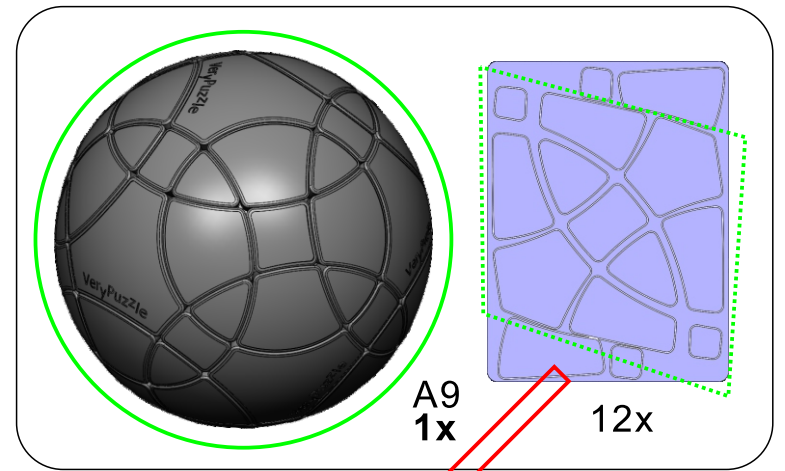
9



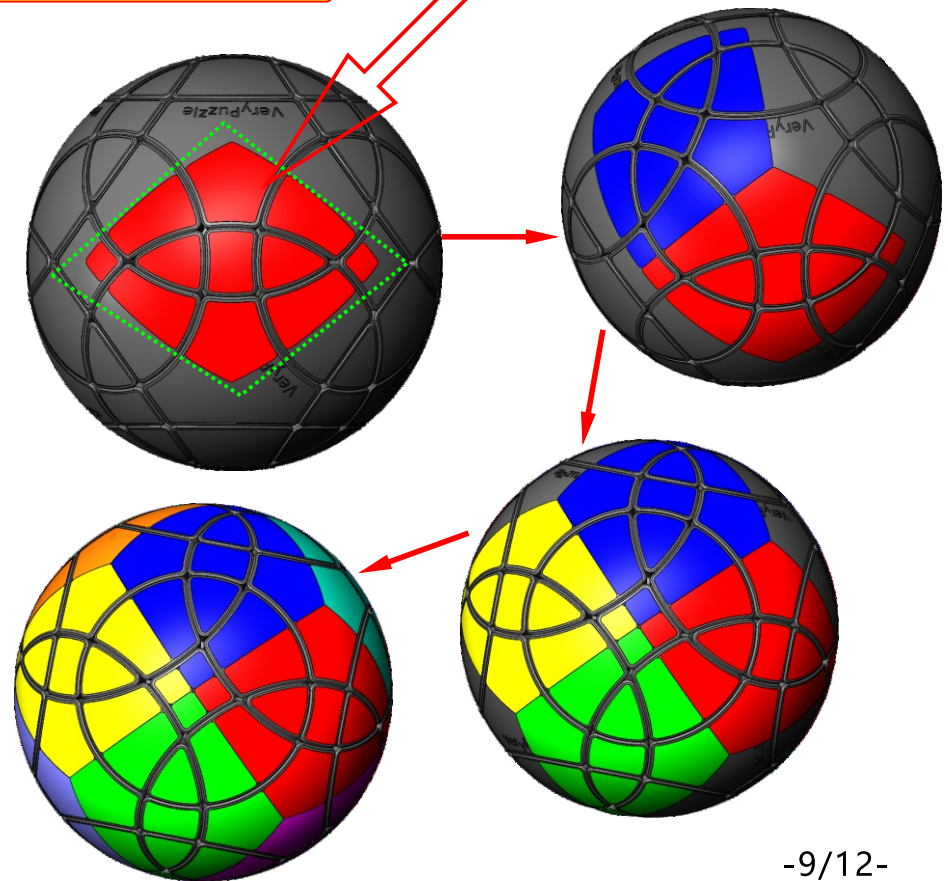
9



10

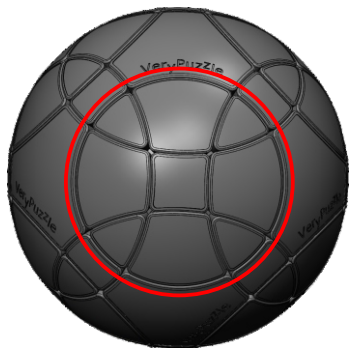


Clean part surface  
before applying stickers

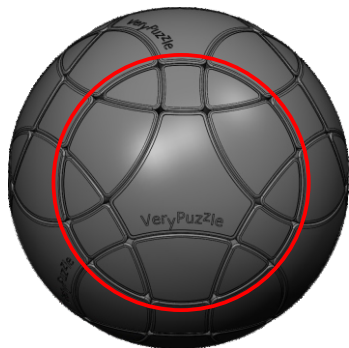


11

## Rotation Rules



4-fold symmetry  
Turns  $90 \cdot n$  degrees



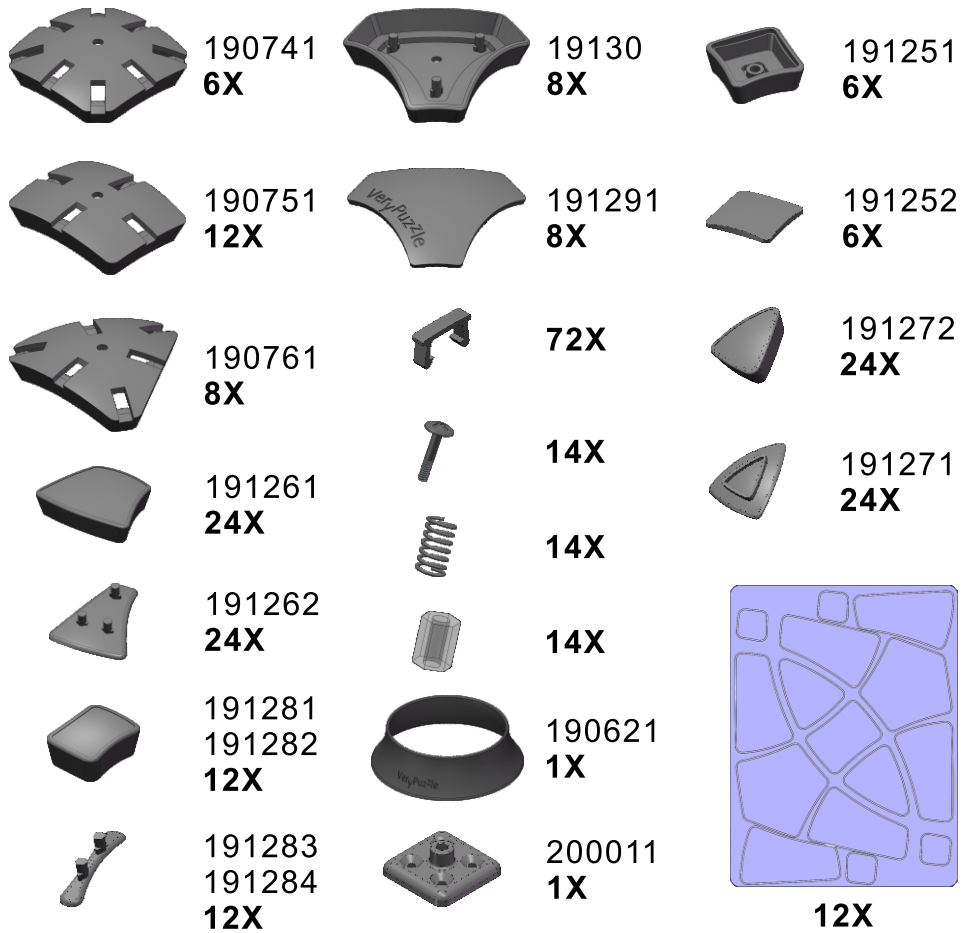
3-fold symmetry  
Turns  $120 \cdot n$  degrees

## Notations and Algorithms



## Product Information Card

<b>Product Name</b>	C1O3-M5
<b>Model NO.</b>	#86
<b>Design</b>	VeryPuzzle Co., Ltd(HK)
<b>Manufacturer</b>	VeryPuzzle Co., Ltd(HK)
<b>Year of release</b>	2020
<b>Maximum diameter</b>	95 mm
<b>Visible moving parts</b>	74 pcs
<b>Coloring strategy</b>	dual Voronoi
<b>Number of colors</b>	12 colors
<b>Sticker type</b>	textured
<b>Sticker protection</b>	Yes
<b>Number of sticker pieces</b>	132 pcs
<b>Axis &amp; Symmetry</b>	C(C4)+O(C3)
<b>Maximum parts shared between two axes</b>	3 parts
<b>In-core spring</b>	Yes
<b>Adjustable tension</b>	No
<b>Technical Name</b>	C1O3-M5
<b>Topological Print</b>	C35O45
<b>Core specification</b>	CORD80



## Customer Service

1. [support@verypuzzle.com](mailto:support@verypuzzle.com)



# VeryPuzzle