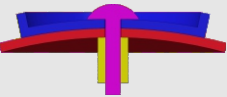
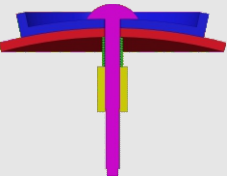
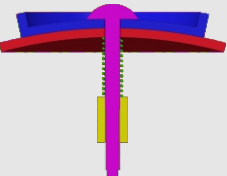
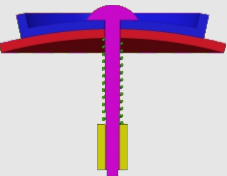


How to tighten the screws

Find your model in the table

| Assembly section | Tightness | Models |
|--|--|---|
|  | tight (no spring) | #61,#75 |
|  | tight (spring in green) (Short screw is recommended) | #72,#73,#77,#87,#88 #89 |
|  | medium (spring in green) | #94,#93,#90,#86,#85 #83,#82,#81,#80,#79 #78,#76,#71,#70,#69 #68,#67,#66,#65,#64 #63,#62,#60,#59 |
|  | loose (spring in green) | Mostly applicable to 'medium' category. Not recommended in general. |

1. Tighter is usually better since the spring we provide is soft.
2. Early products had been using longer screws. You can either insert thick washer when necessary or request for short screws in the <Accessory & free parts> directory at our homepage:
<https://www.verypuzzle.com>

VeryPuzzle
2024/04

VeryPuzzle

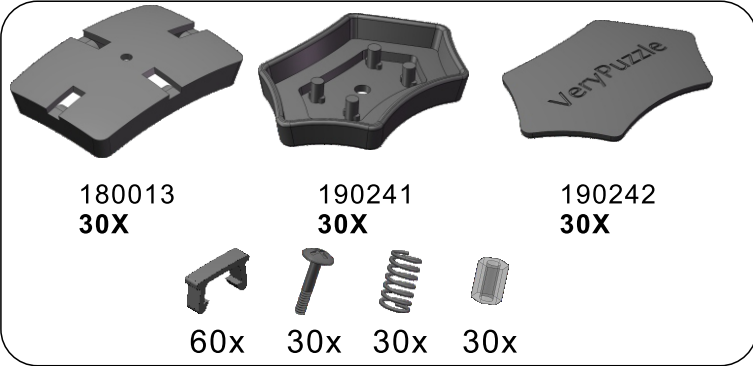


Rhombic Tuttminx 66
D1RT5-M5-C1
#71

900+ parts
42 axes



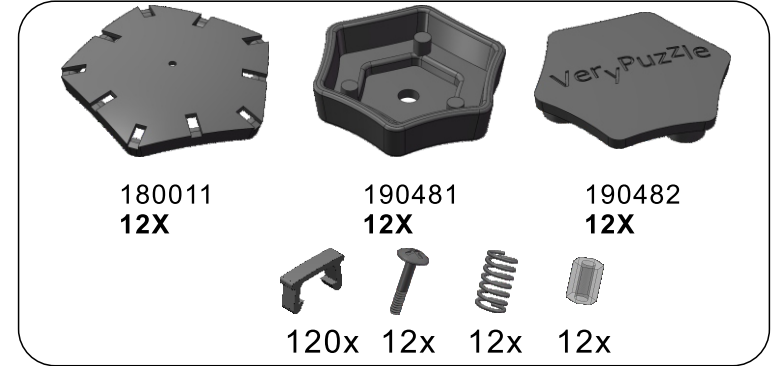
1



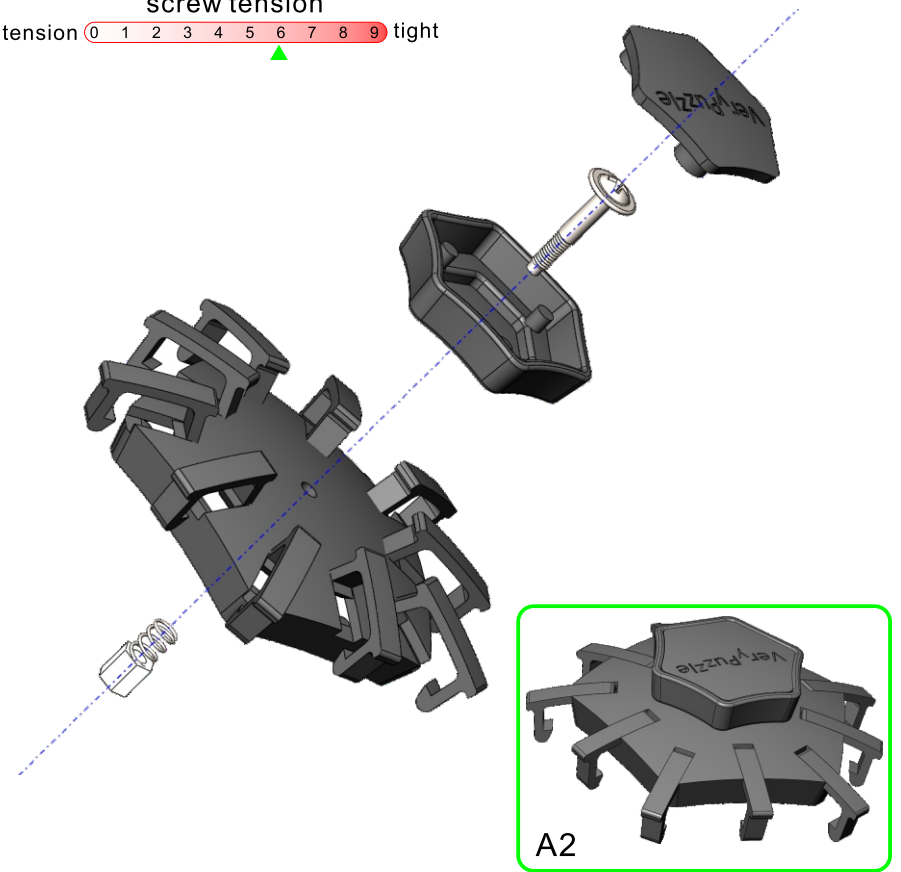
screw tension
no tension 0 1 2 3 4 5 6 7 8 9 tight



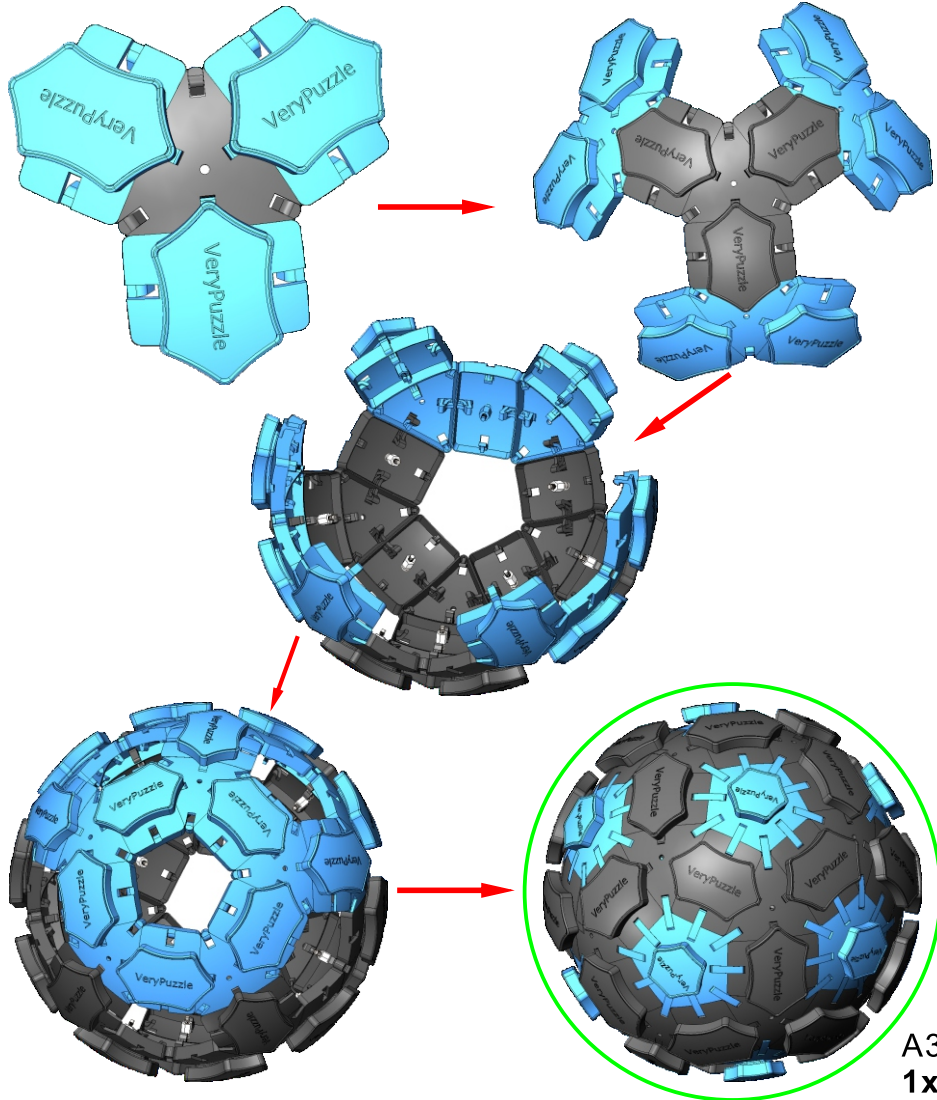
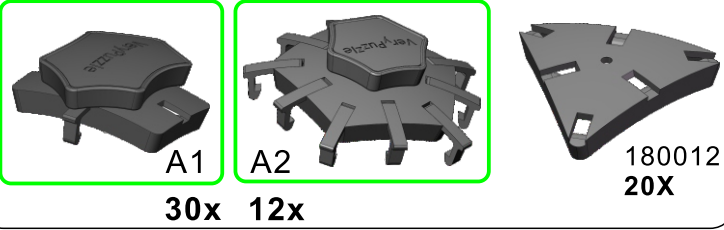
2



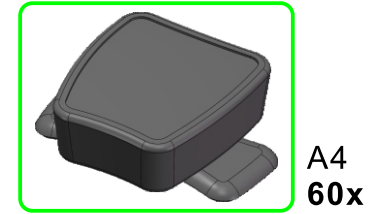
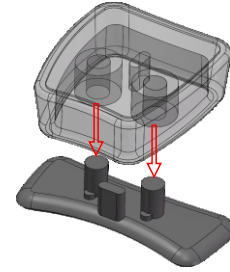
screw tension
no tension 0 1 2 3 4 5 6 7 8 9 tight



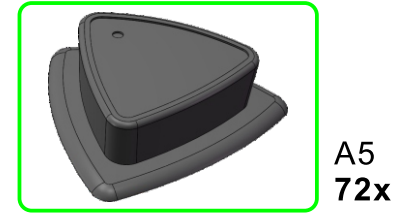
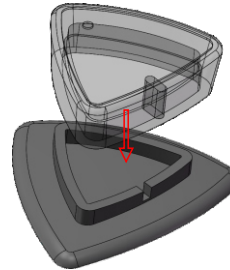
3



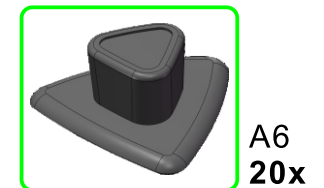
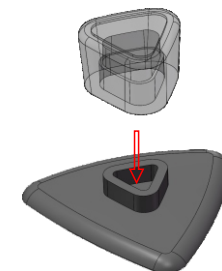
4



5



6



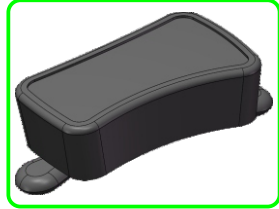
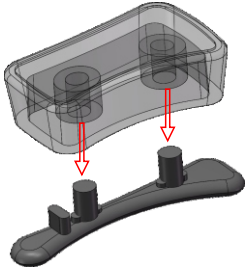
7



190472
72X

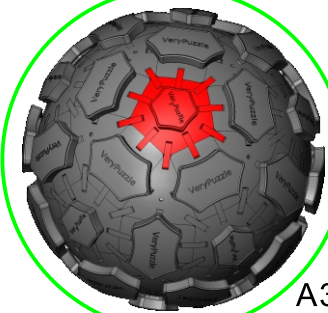


190473
72X

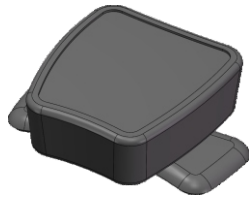


A7
72x

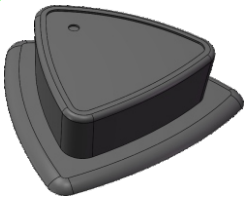
8



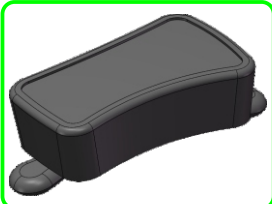
A3
1x



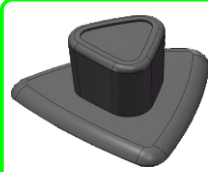
A4
60x



A5
72x

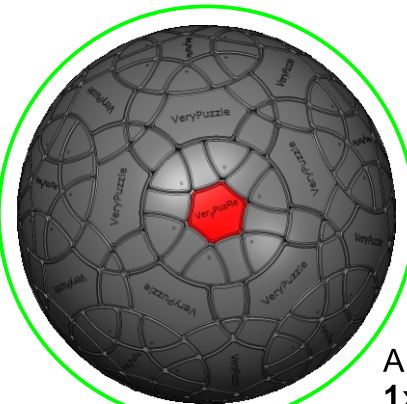
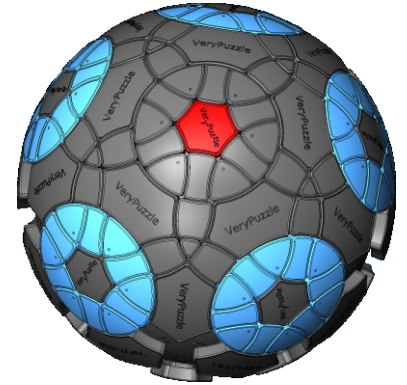
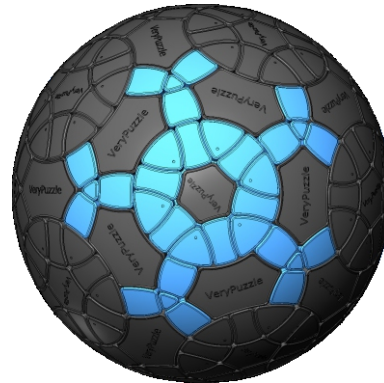
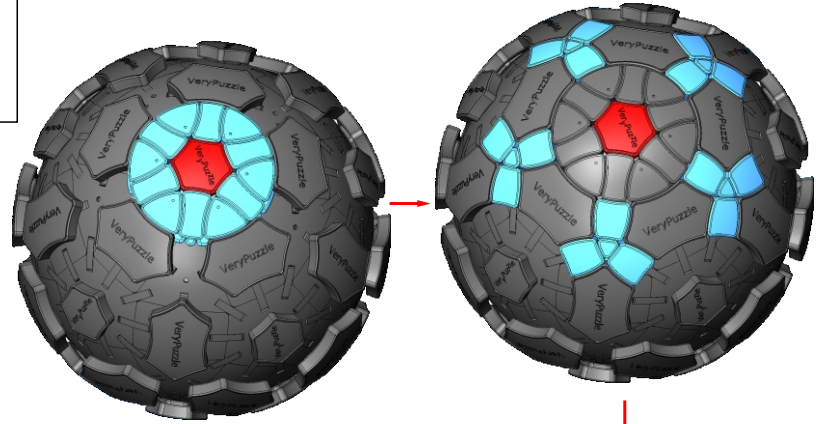


A7
72x



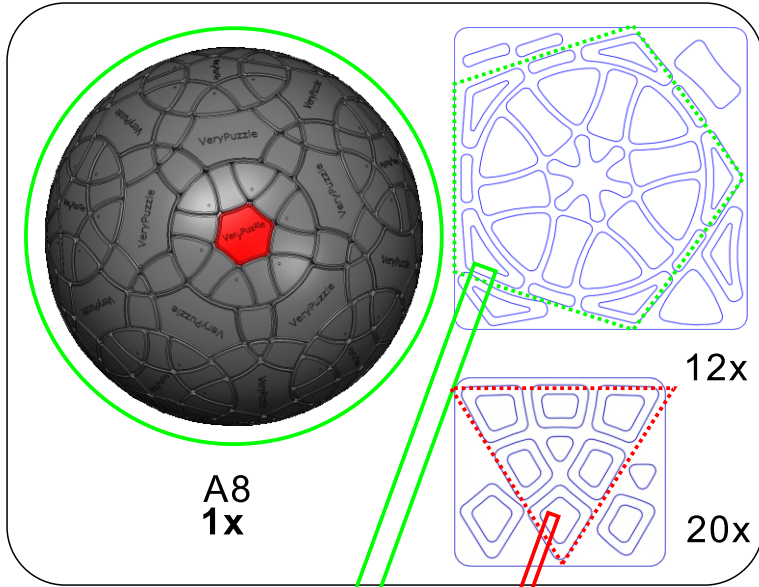
A6
20x

8



A8
1x

9



A8
1x

Clean part surface
before applying stickers



10

Rotation Rules

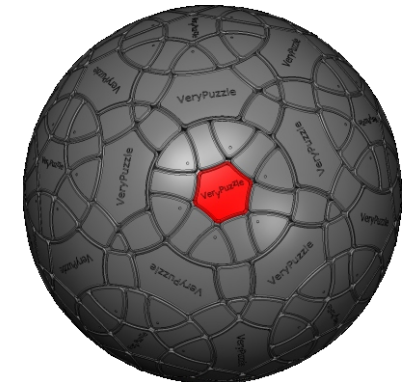
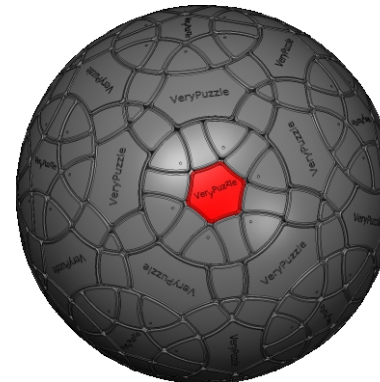


6-fold symmetry
Turns $60 \cdot n$ degrees

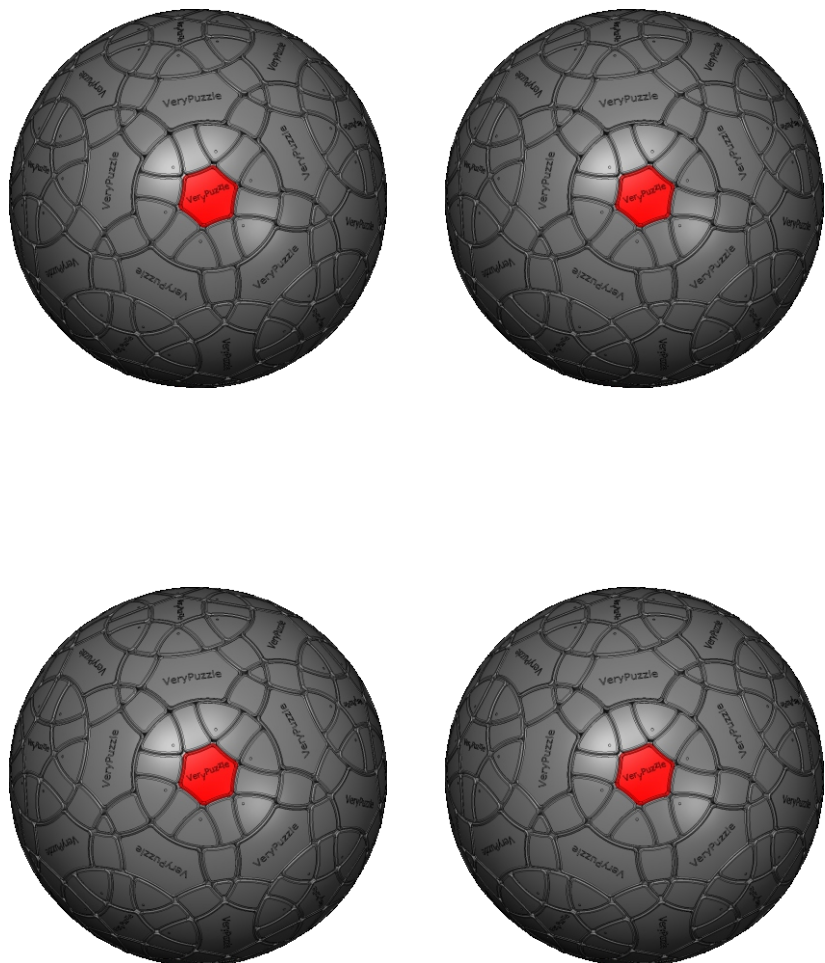


R4 symmetry
Turns $180 \cdot n$ degrees
Turns $180 \cdot n + 63.4$ degrees

Notations and Algorithms

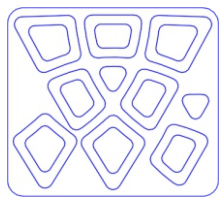
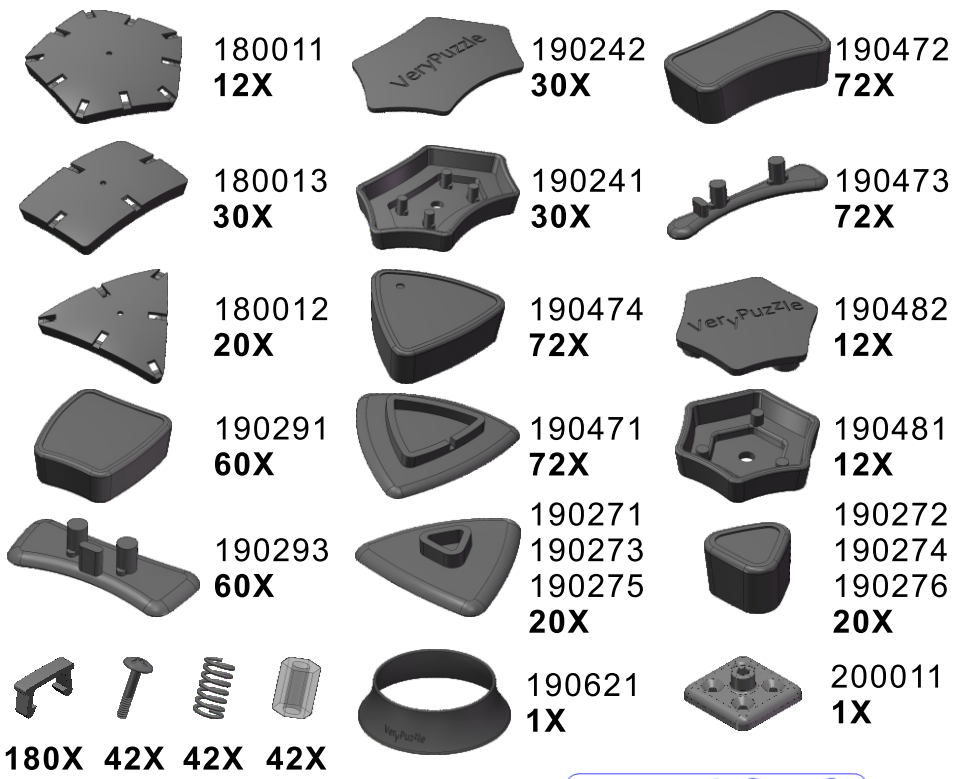


Notations and Algorithms

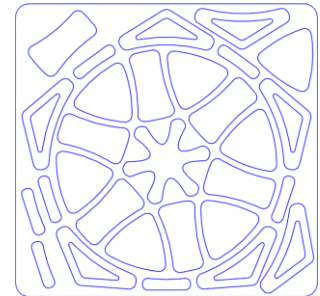


Product Information Card

| | |
|--|-------------------------|
| Product Name | Rhombic Tuttminx 66 |
| Model NO. | #71 |
| Design | VeryPuzzle Co., Ltd(HK) |
| Manufacturer | VeryPuzzle Co., Ltd(HK) |
| Year of release | 2019 |
| Maximum diameter | 145 mm |
| Visible moving parts | 266 pcs |
| Coloring strategy | simplified Delauney |
| Number of colors | 32 colors |
| Sticker type | textured, uniform |
| Sticker protection | Yes |
| Number of sticker pieces | 416 pcs |
| Axis & Symmetry | $D(C6)+RT(R4)$ |
| Maximum parts shared between two axes | 3 parts |
| In-core spring | Yes |
| Adjustable tension | No |
| Technical Name | D1RT5-M5-C1 |
| Topological Print | D23RT24 |
| Core specification | DIRT130 |



20X



12X

Customer Service

1. support@verypuzzle.com



VeryPuzzle