
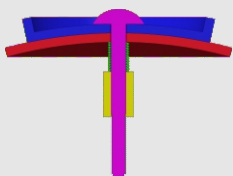
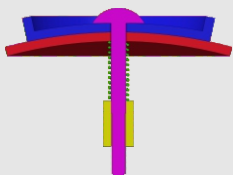
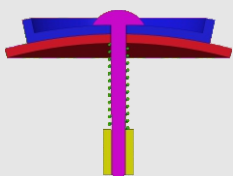


How to tighten the screws

Find your model in the table

Assembly section	Tightness	Models
	tight (no spring)	#61,#75
	tight (spring in green) (Short screw is recommended)	#72,#73,#77,#87,#88 #89
	medium (spring in green)	#94,#93,#90,#86,#85 #83,#82,#81,#80,#79 #78,#76,#71,#70,#69 #68,#67,#66,#65,#64 #63,#62,#60,#59
	loose (spring in green)	Mostly applicable to 'medium' category. Not recommended in general.

1. Tighter is usually better since the spring we provide is soft.
2. Early products had been using longer screws. You can either insert thick washer when necessary or request for short screws in the <Accessory & free parts> directory at our homepage:
<https://www.verypuzzle.com>

VeryPuzzle
2024/04

VeryPuzzle

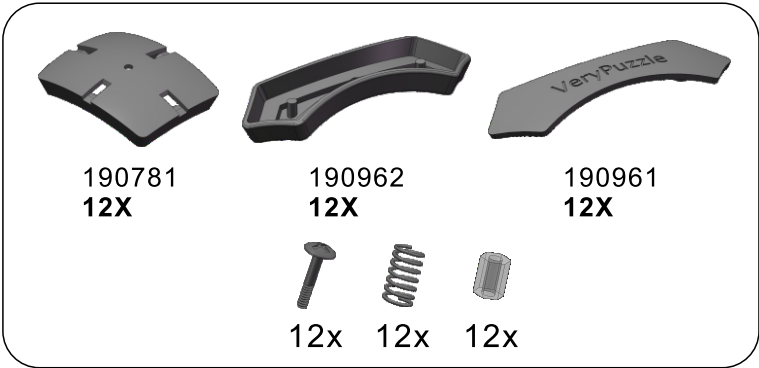


Crazy Chopper F1
C1RD5-M5-F1
#79

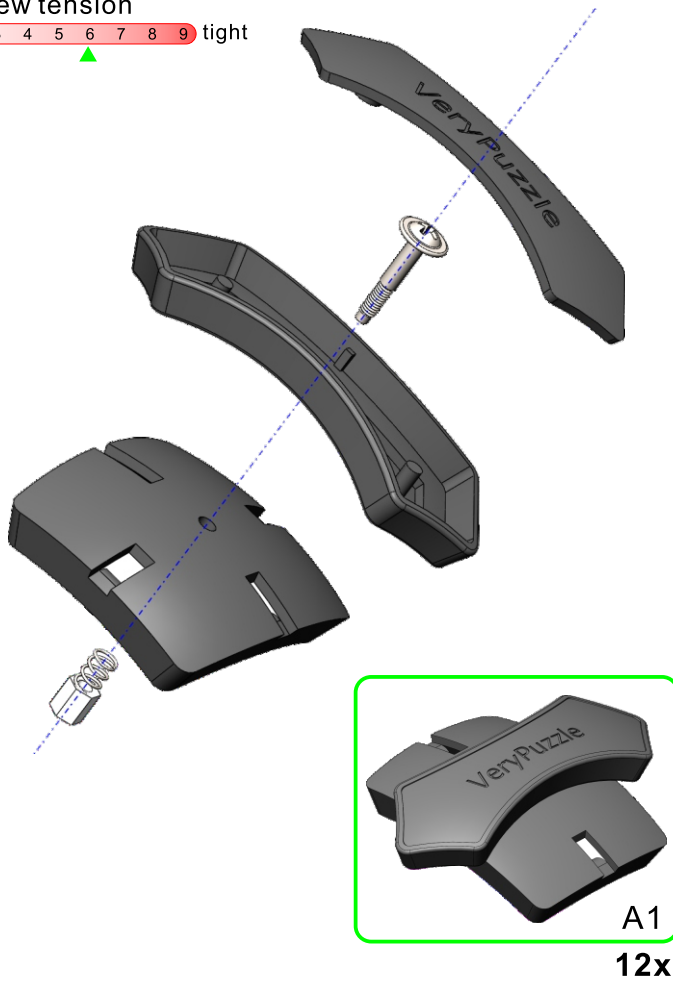
400+ parts
18 axes



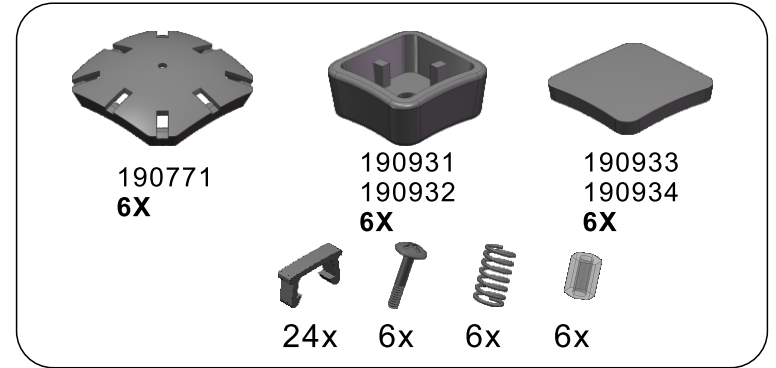
1



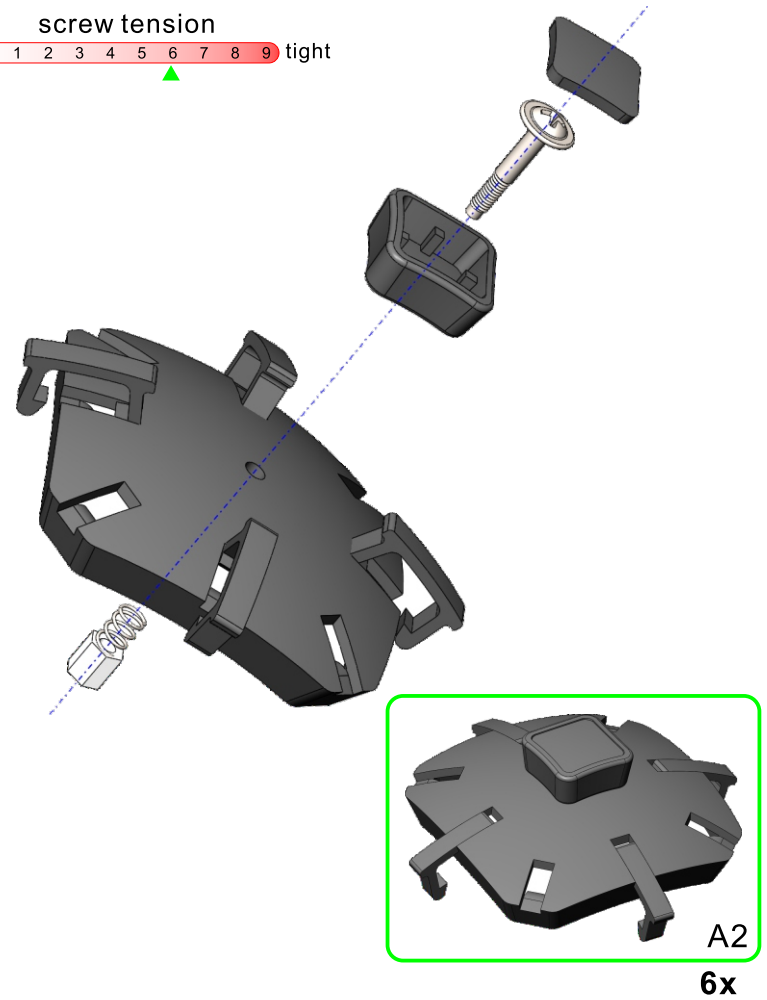
screw tension
no tension 0 1 2 3 4 5 6 7 8 9 tight



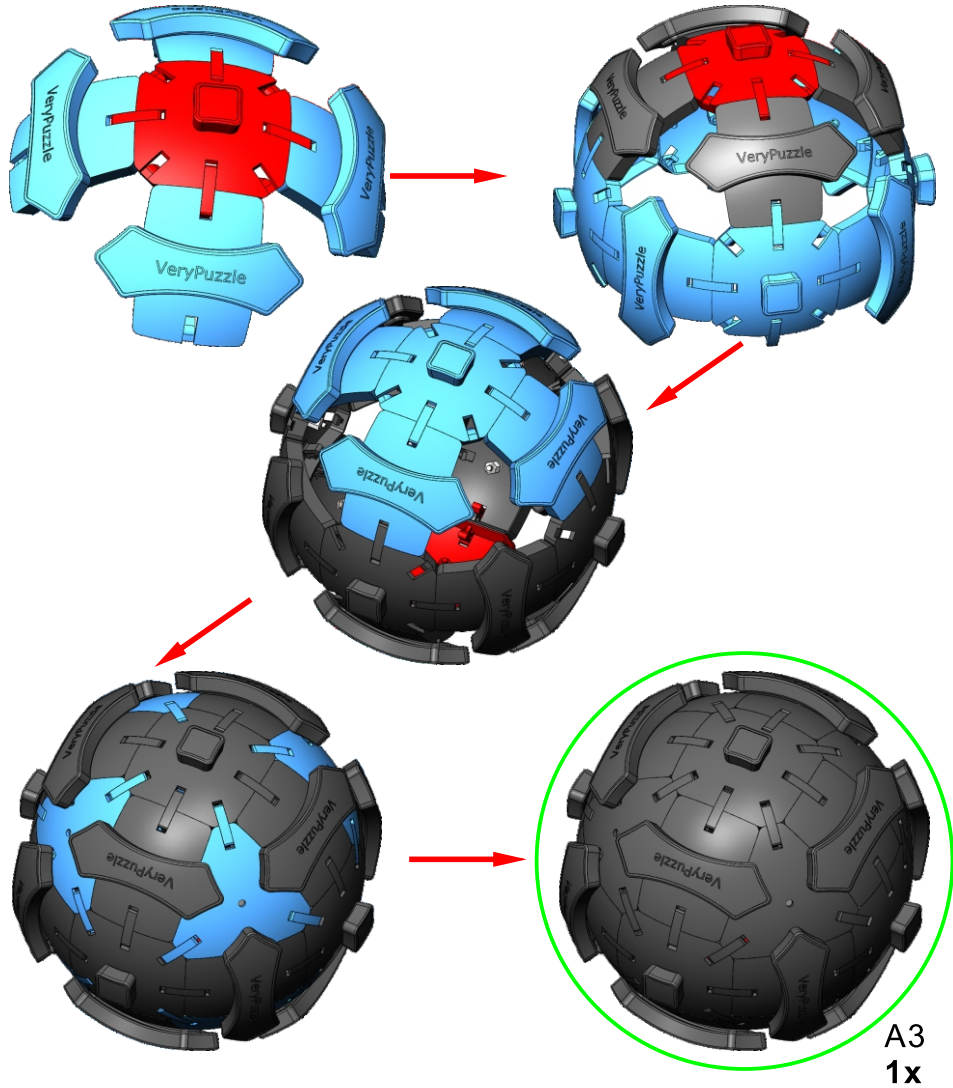
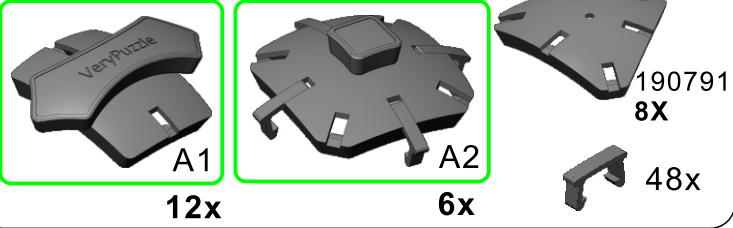
2



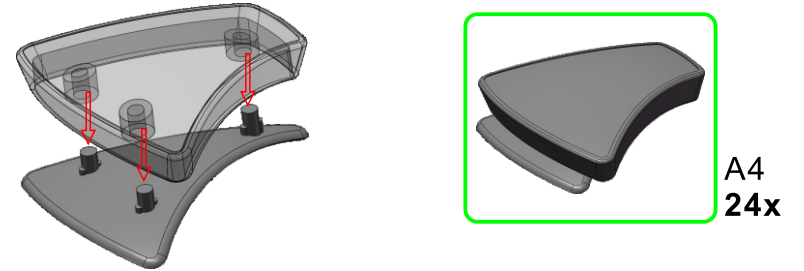
screw tension
no tension 0 1 2 3 4 5 6 7 8 9 tight



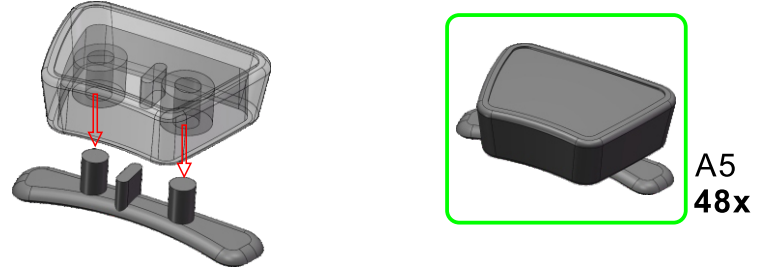
3



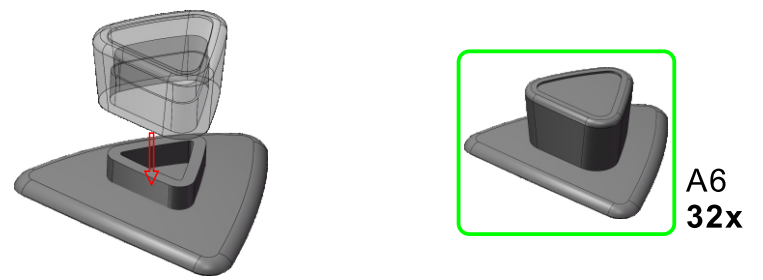
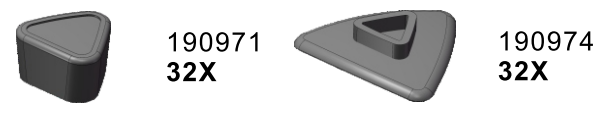
4



5



6



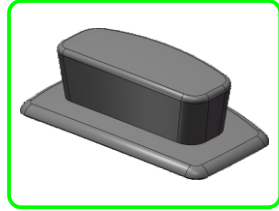
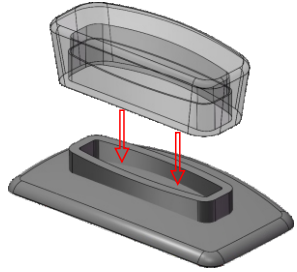
7



190981
190982
24X

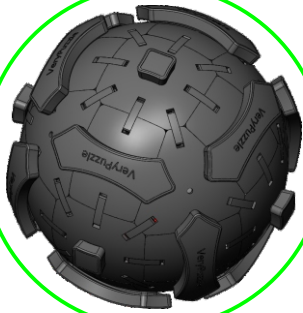


190983
190984
24X

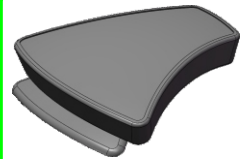


A7
24x

8



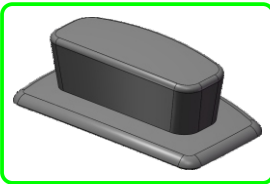
A3
1x



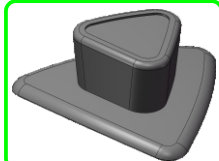
A4
24x



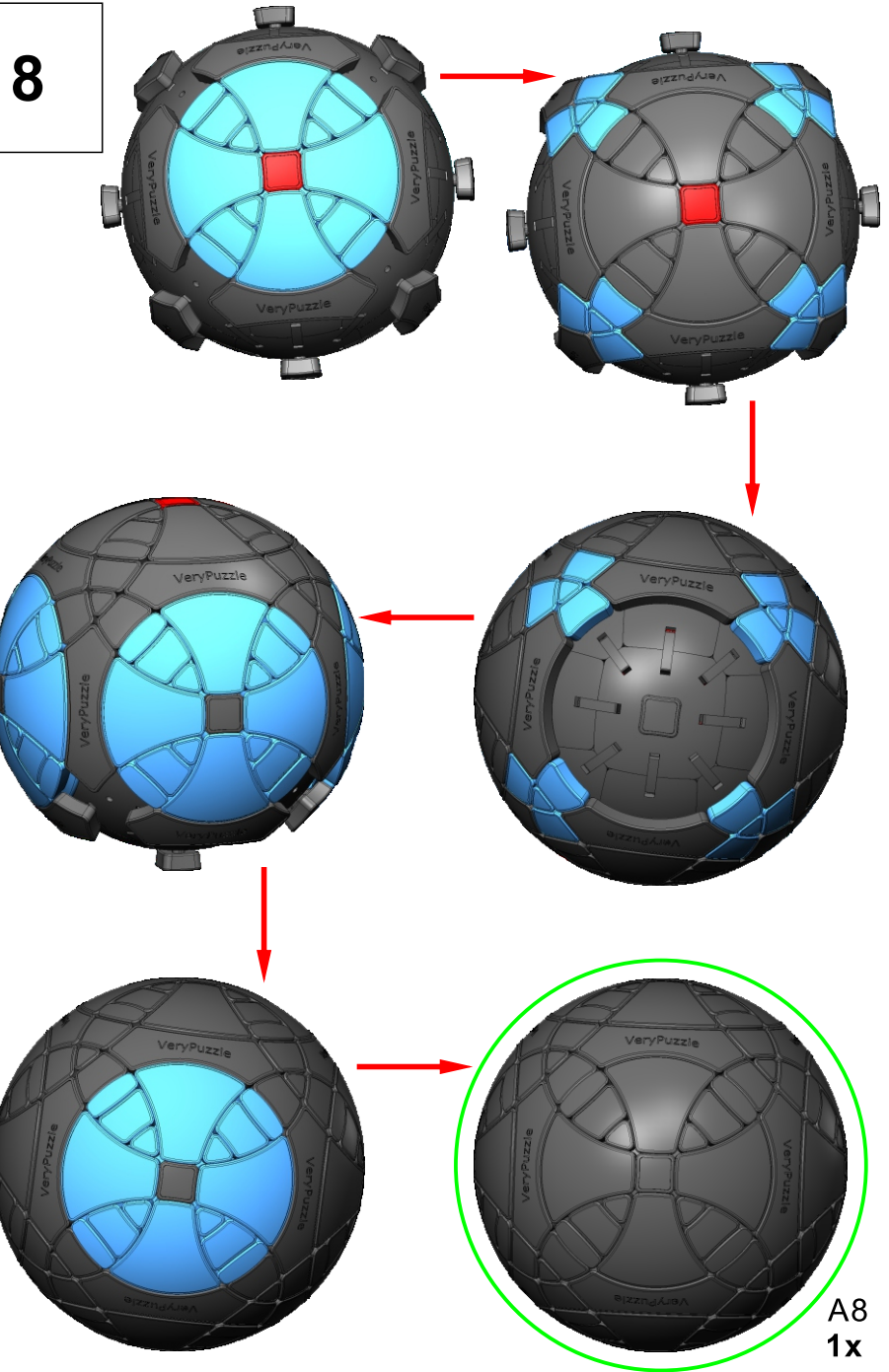
A5
48x



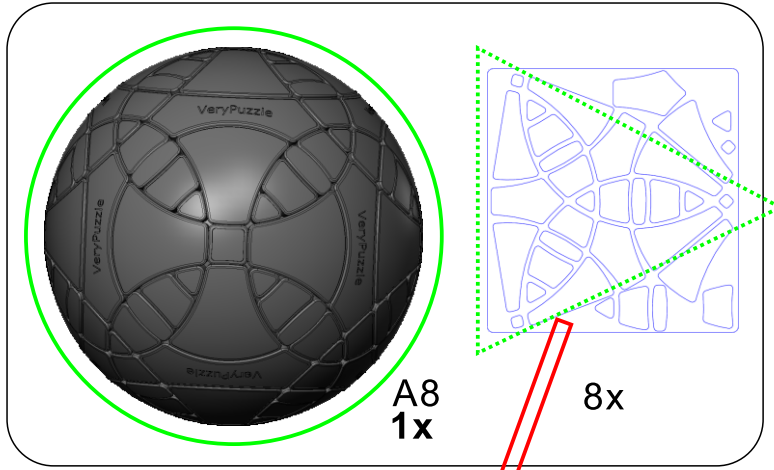
A7
24x



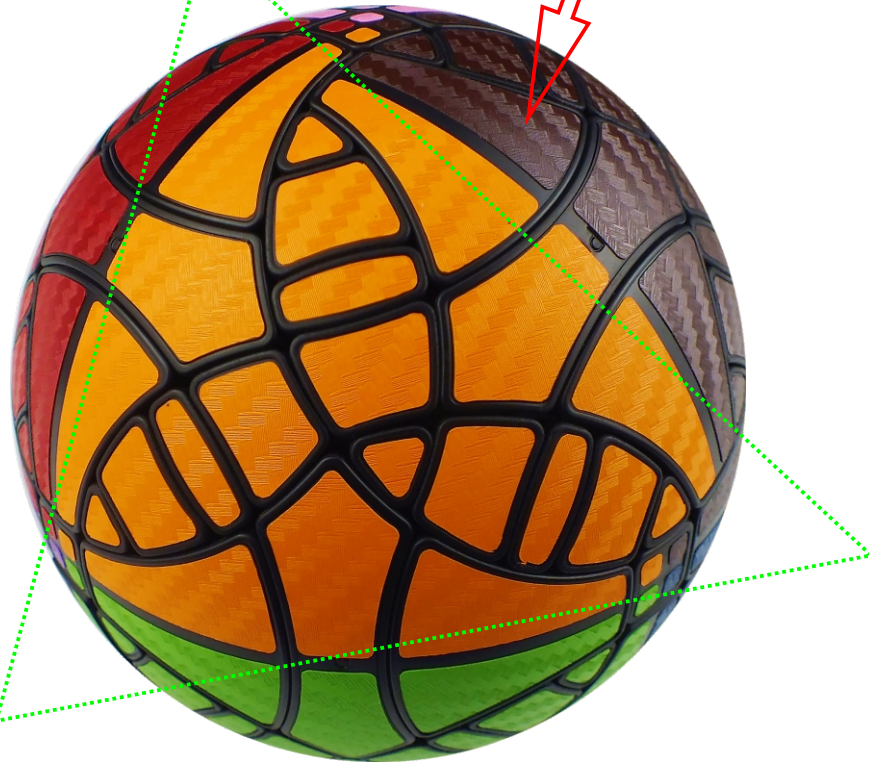
A6
32x



9

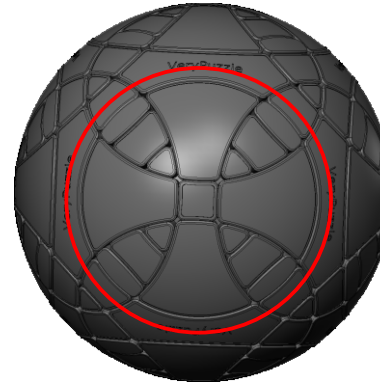


Clean part surface before applying stickers

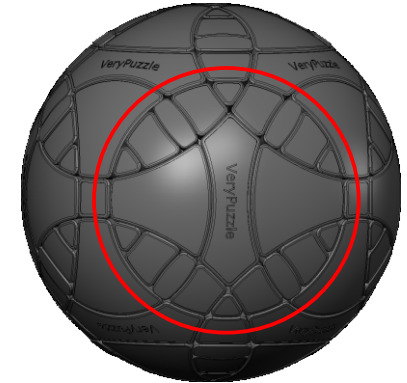


10

Rotation Rules

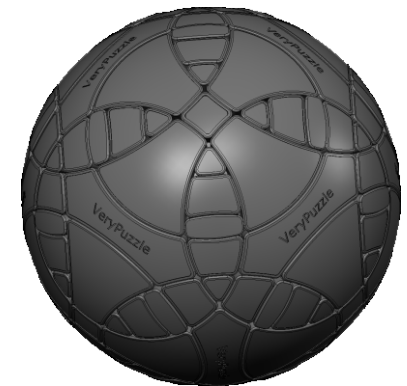
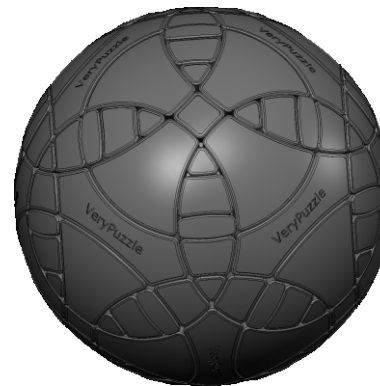


4-fold symmetry
Turns $90 \cdot n$ degrees

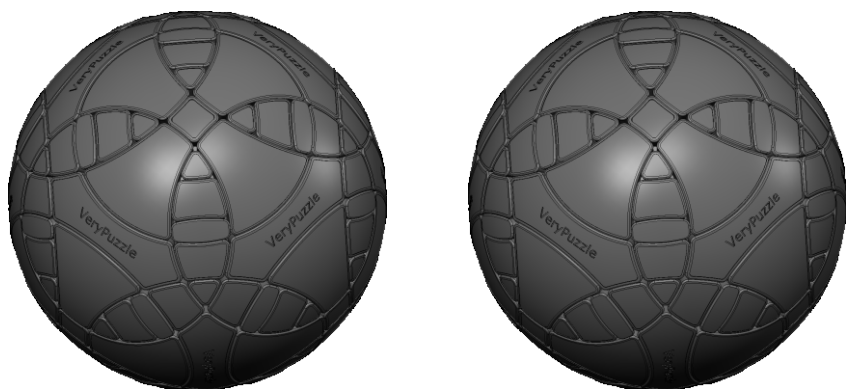
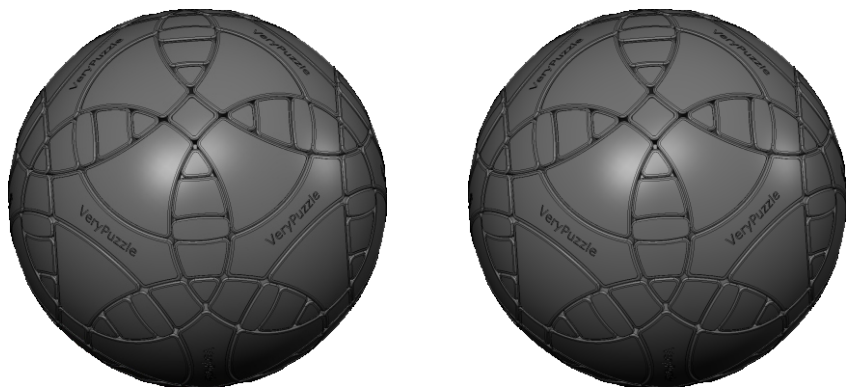


R4 symmetry
Turns $180 \cdot n$ degrees
Turns $180 \cdot n \pm 70.53$ degrees

Notations and Algorithms

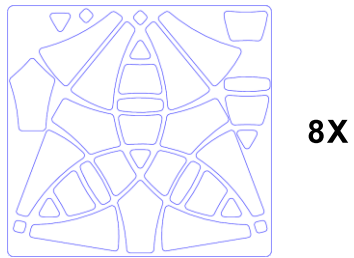
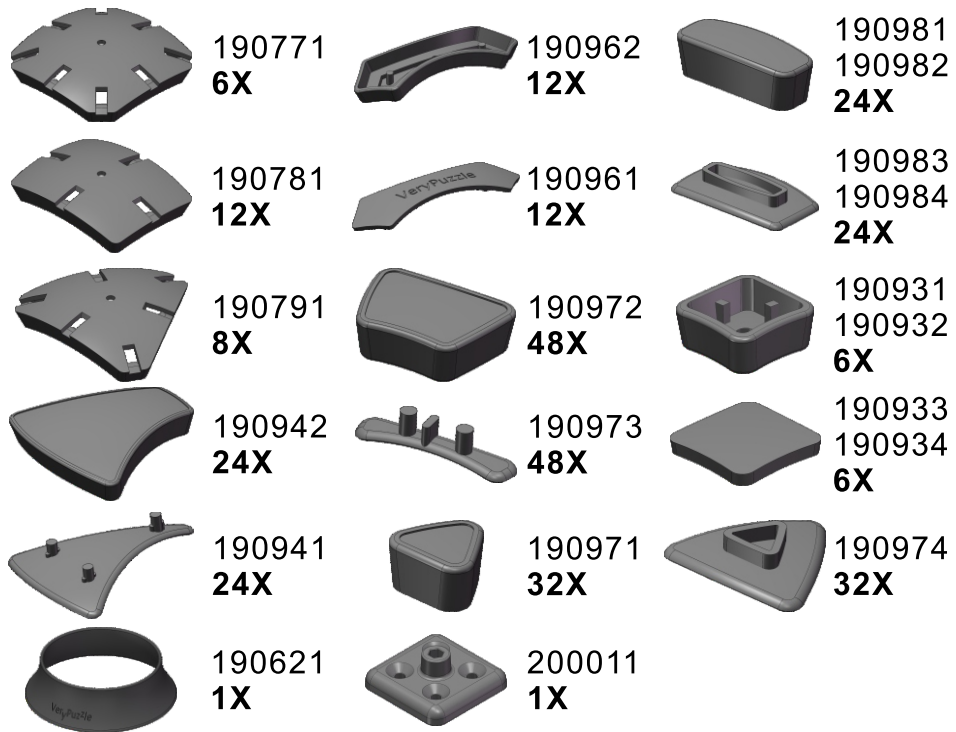


Notations and Algorithms



Product Information Card

Product Name	Crazy Chopper F1
Model NO.	#79
Design	VeryPuzzle Co., Ltd(HK)
Manufacturer	VeryPuzzle Co., Ltd(HK)
Year of release	2020
Maximum diameter	115 mm
Visible moving parts	146 pcs
Coloring strategy	simplified Delauney
Number of colors	12 colors
Sticker type	textured
Sticker protection	Yes
Number of sticker pieces	200 pcs
Axis & Symmetry	C(C4)+RD(R4)
Maximum parts shared between two axes	5 parts
In-core spring	Yes
Adjustable tension	No
Technical Name	C1RD5-M5-F1
Topological Print	C39RD39
Core specification	C39RD39



Customer Service

1. support@verypuzzle.com

