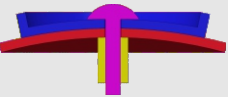
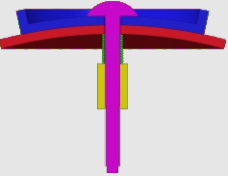
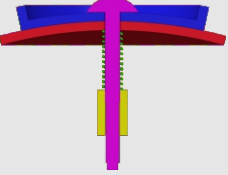
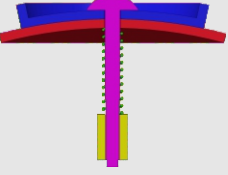


## How to tighten the screws

Find your model in the table

Assembly section	Tightness	Models
	tight (no spring)	#61,#75
	tight (spring in green)  (Short screw is recommended)	#72,#73,#77,#87,#88 #89
	medium (spring in green)	#94,#93,#90,#86,#85 #83,#82,#81,#80,#79 #78,#76,#71,#70,#69 #68,#67,#66,#65,#64 #63,#62,#60,#59
	loose (spring in green)	Mostly applicable to 'medium' category.  Not recommended in general.

1. Tighter is usually better since the spring we provide is soft.
2. Early products had been using longer screws. You can either insert thick washer when necessary or request for short screws in the <Accessory & free parts> directory at our homepage:  
<https://www.verypuzzle.com>

VeryPuzzle  
2024/04

# VeryPuzzle

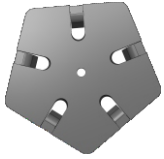


**DIRT-DCL-F1**  
**D111RT1-DCL3-F1**  
**#94**

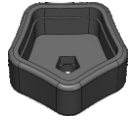
2600+ parts  
122 axes



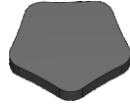
1



200201  
12X



200051  
12X



200052  
12X



60x



12x

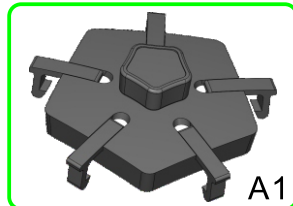
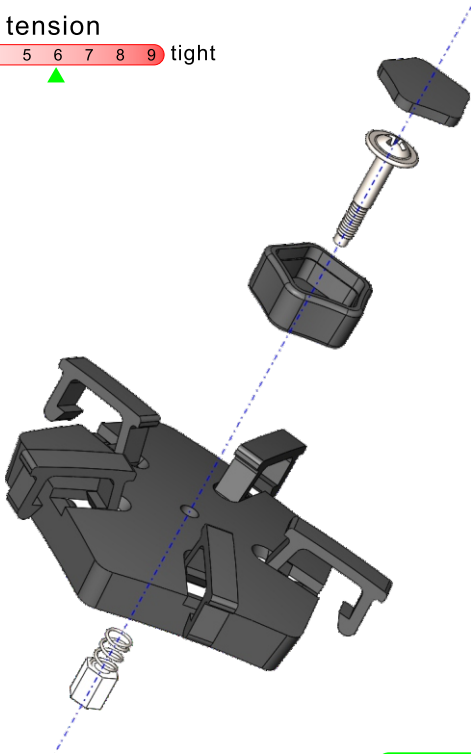


12x



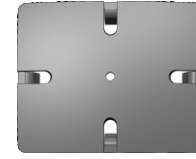
12x

screw tension  
no tension 0 1 2 3 4 5 6 7 8 9 tight



A1  
12x

2



200221  
30X



200121  
30X



200122  
30X



30x

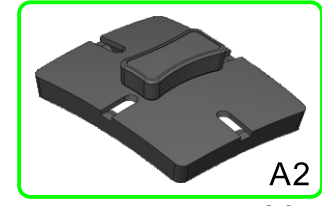
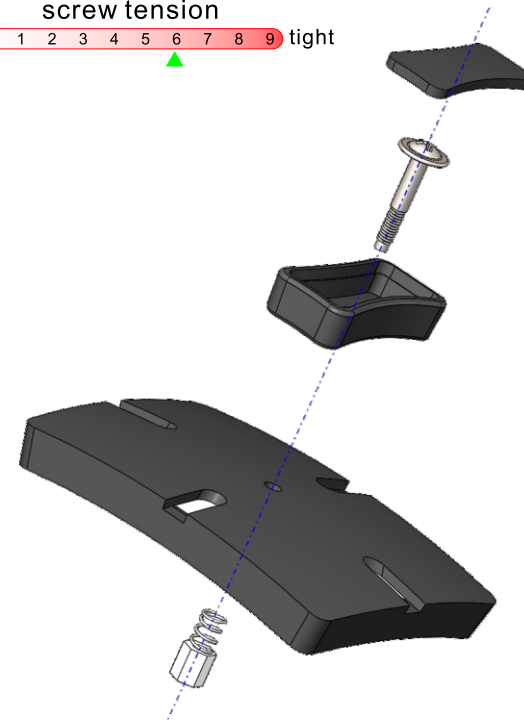


30x



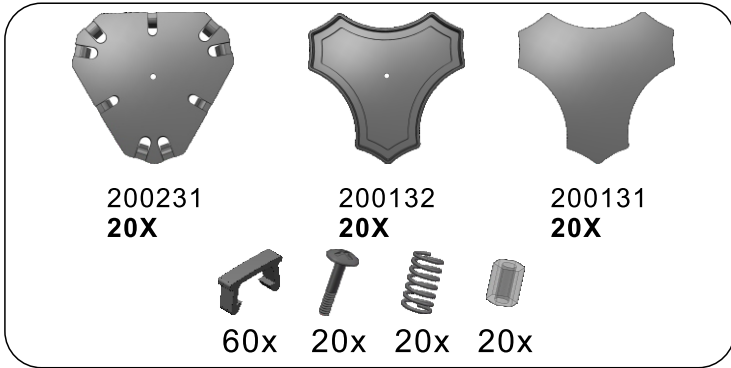
30x

screw tension  
no tension 0 1 2 3 4 5 6 7 8 9 tight



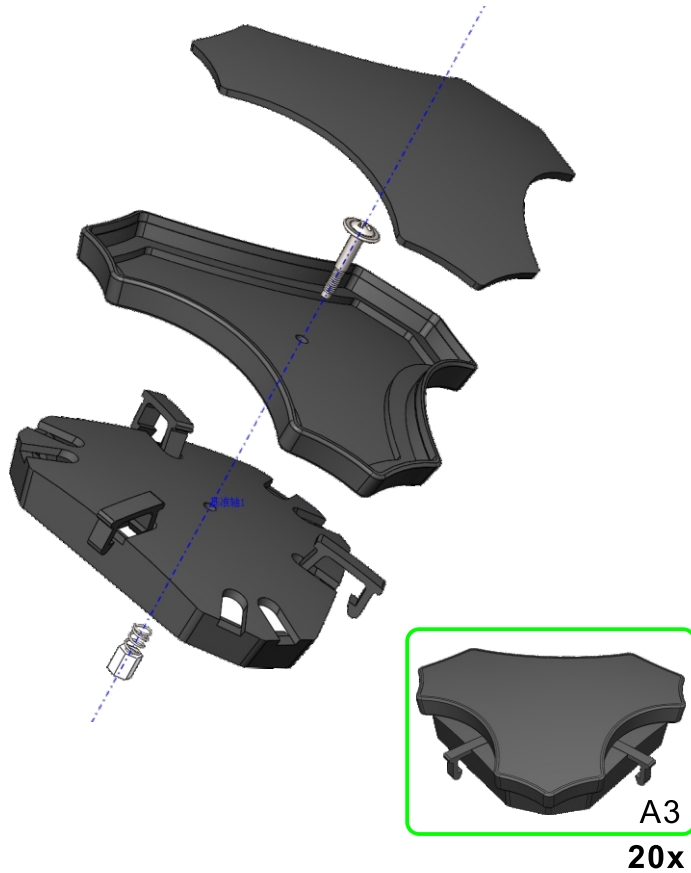
A2  
30x

3

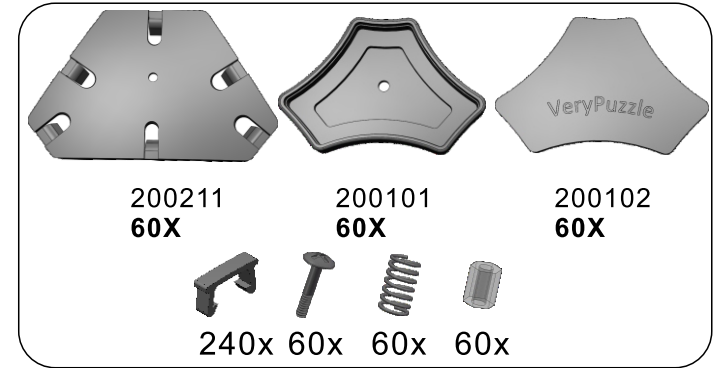


screw tension

no tension 0 1 2 3 4 5 6 7 8 9 tight

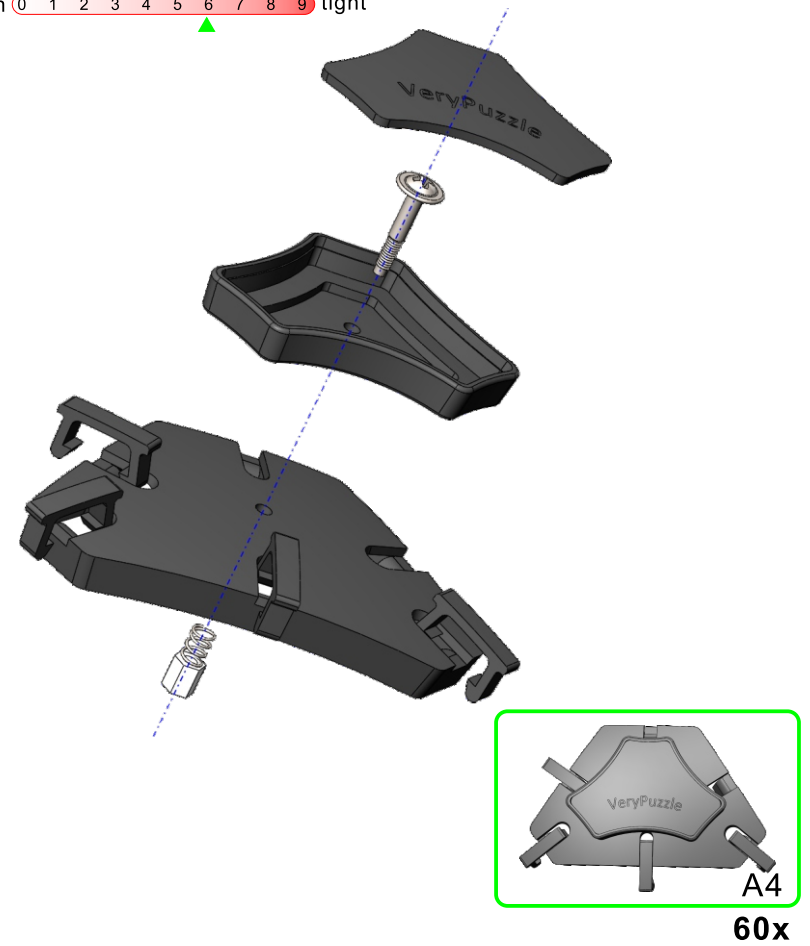


4

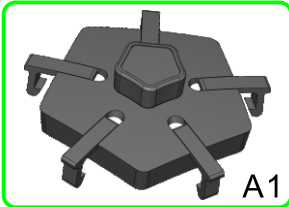


screw tension

no tension 0 1 2 3 4 5 6 7 8 9 tight

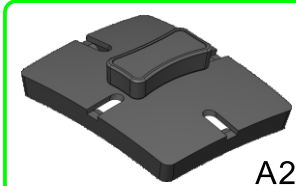


5



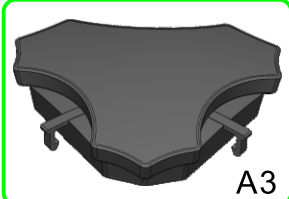
A1

12x



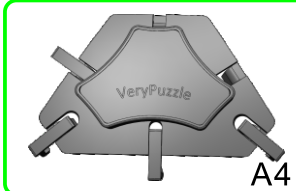
A2

30x



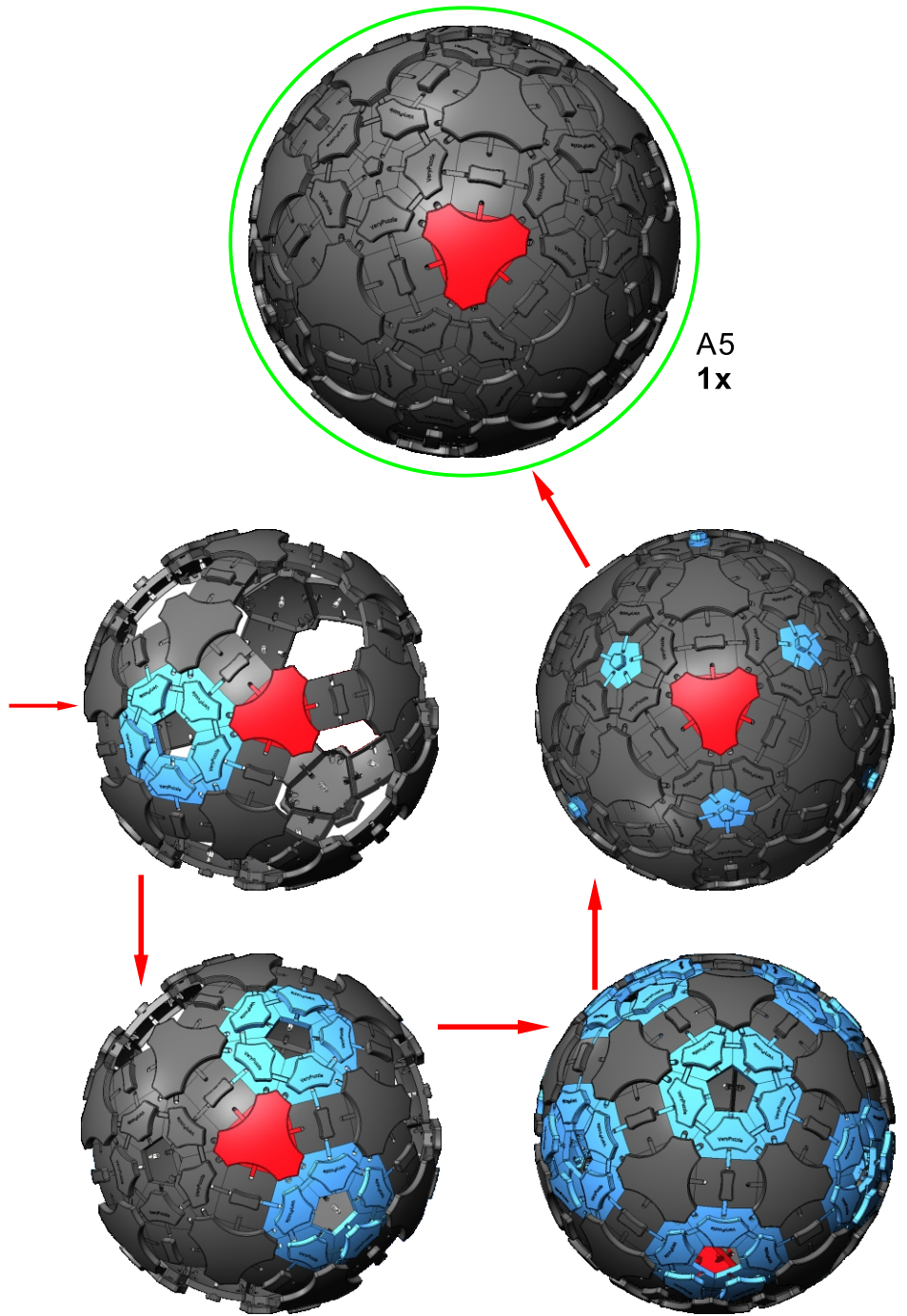
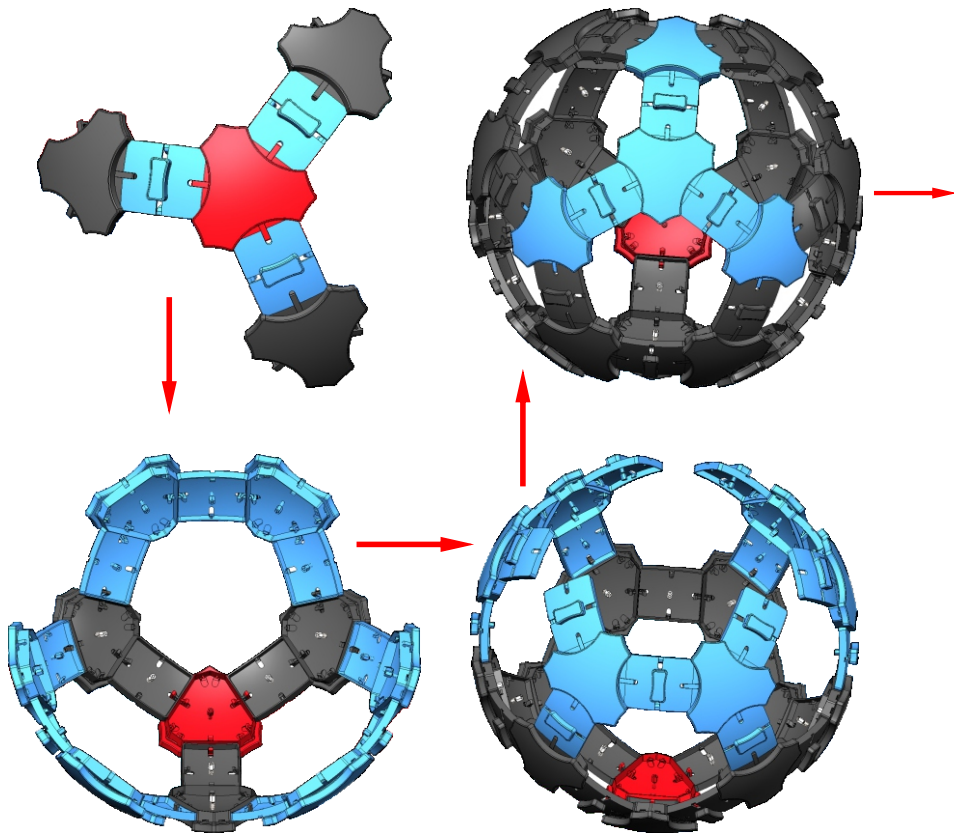
A3

20x



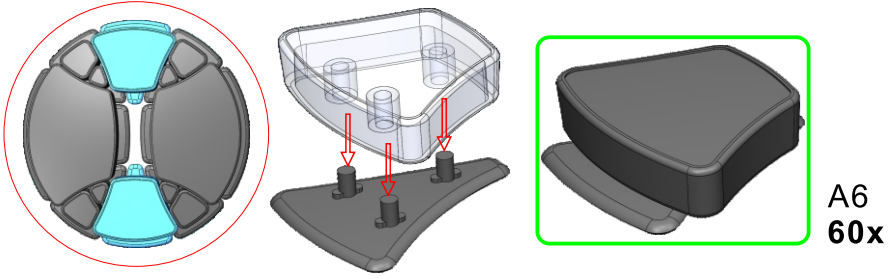
A4

60x

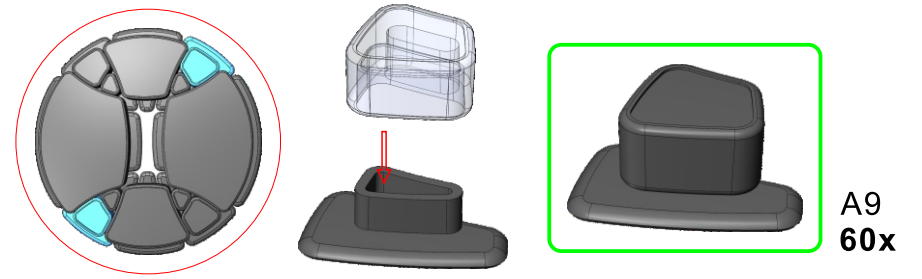
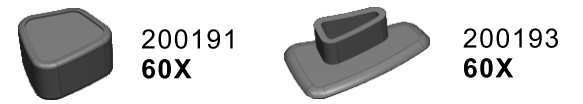


A5  
1x

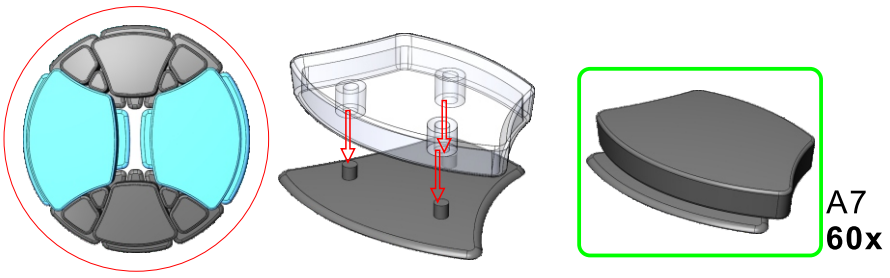
6



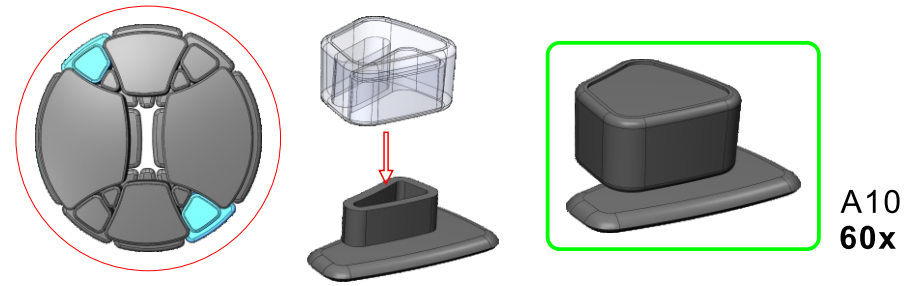
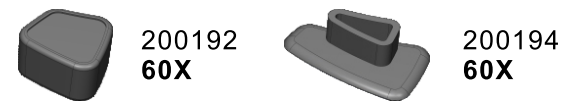
9



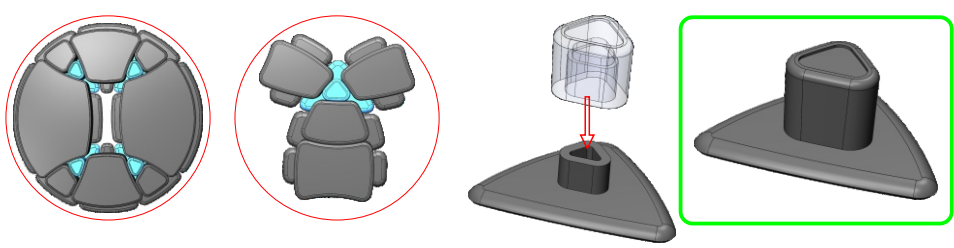
7



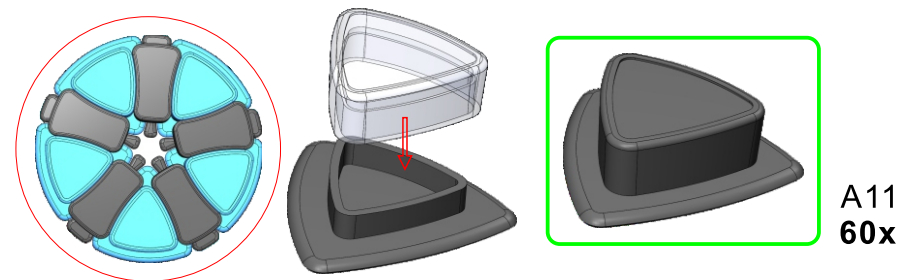
10



8



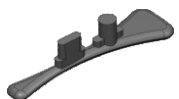
11



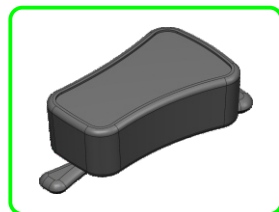
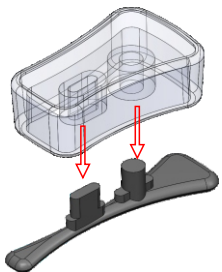
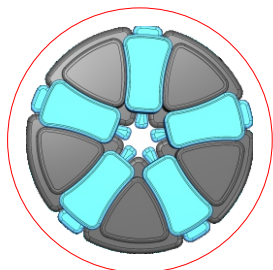
12



200062  
60X



200061  
60X

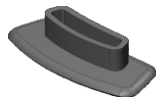


A12  
60x

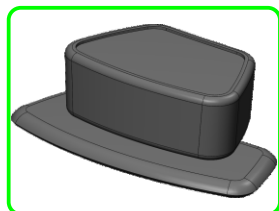
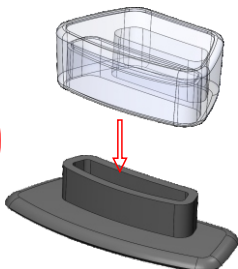
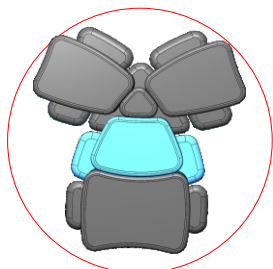
13



200181  
200182  
60X

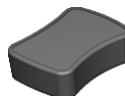


200183  
200184  
60X

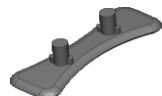


A13  
60x

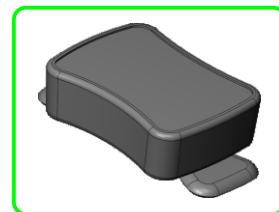
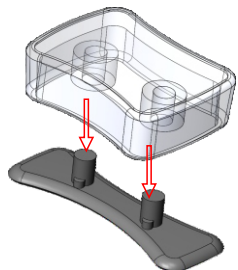
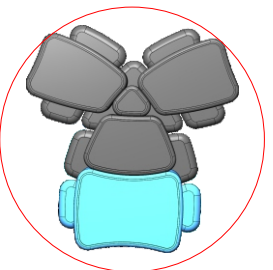
14



200172  
60X

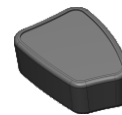


200171  
60X

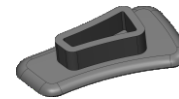


A14  
60x

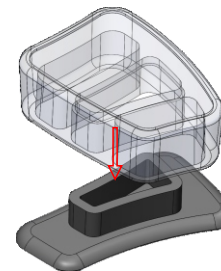
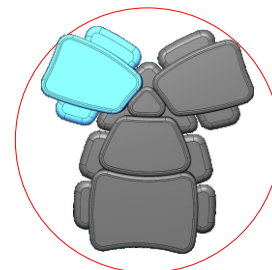
15



200151  
60X

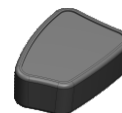


200154  
60X



A15  
60x

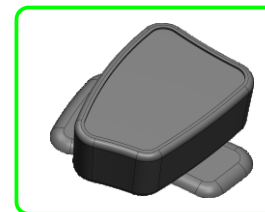
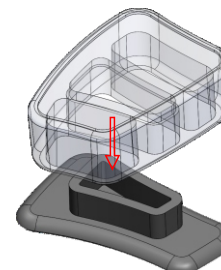
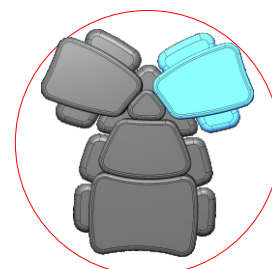
16



200152  
60X

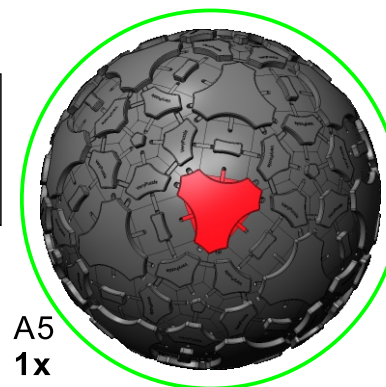


200153  
60X



A16  
60x

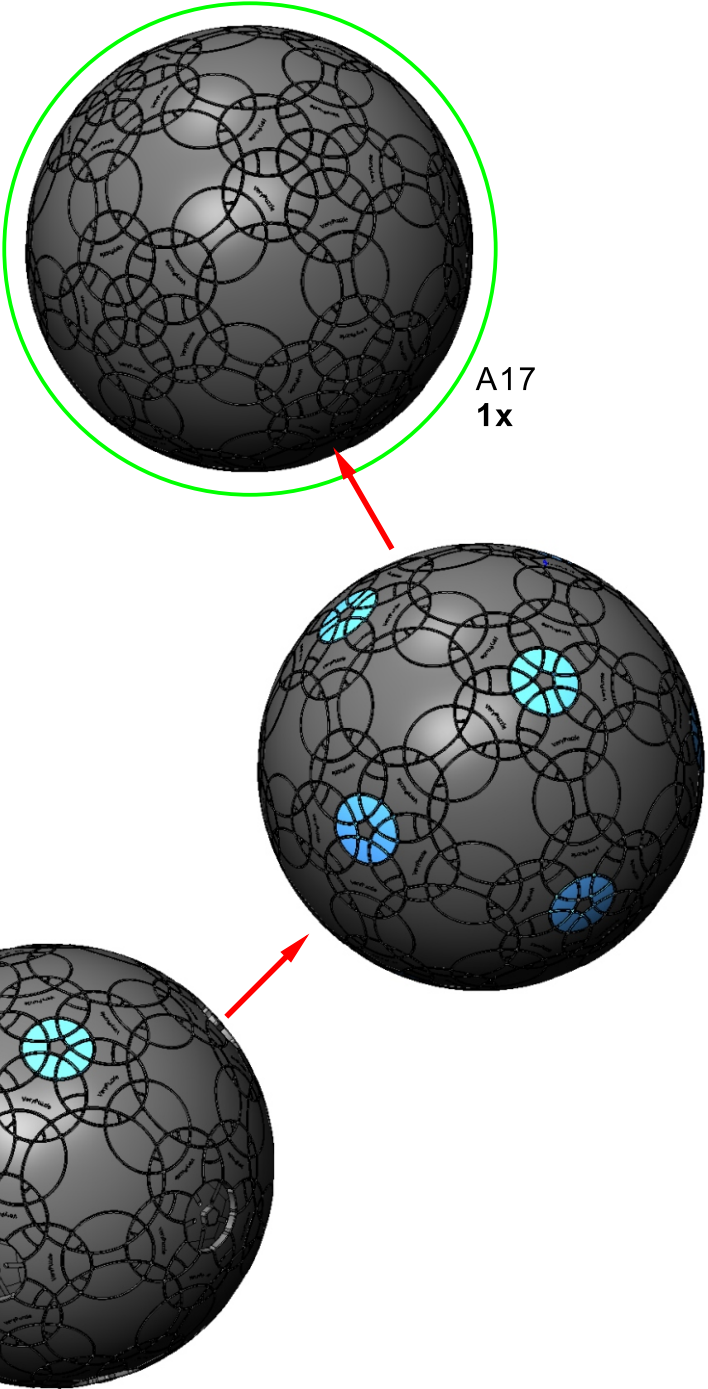
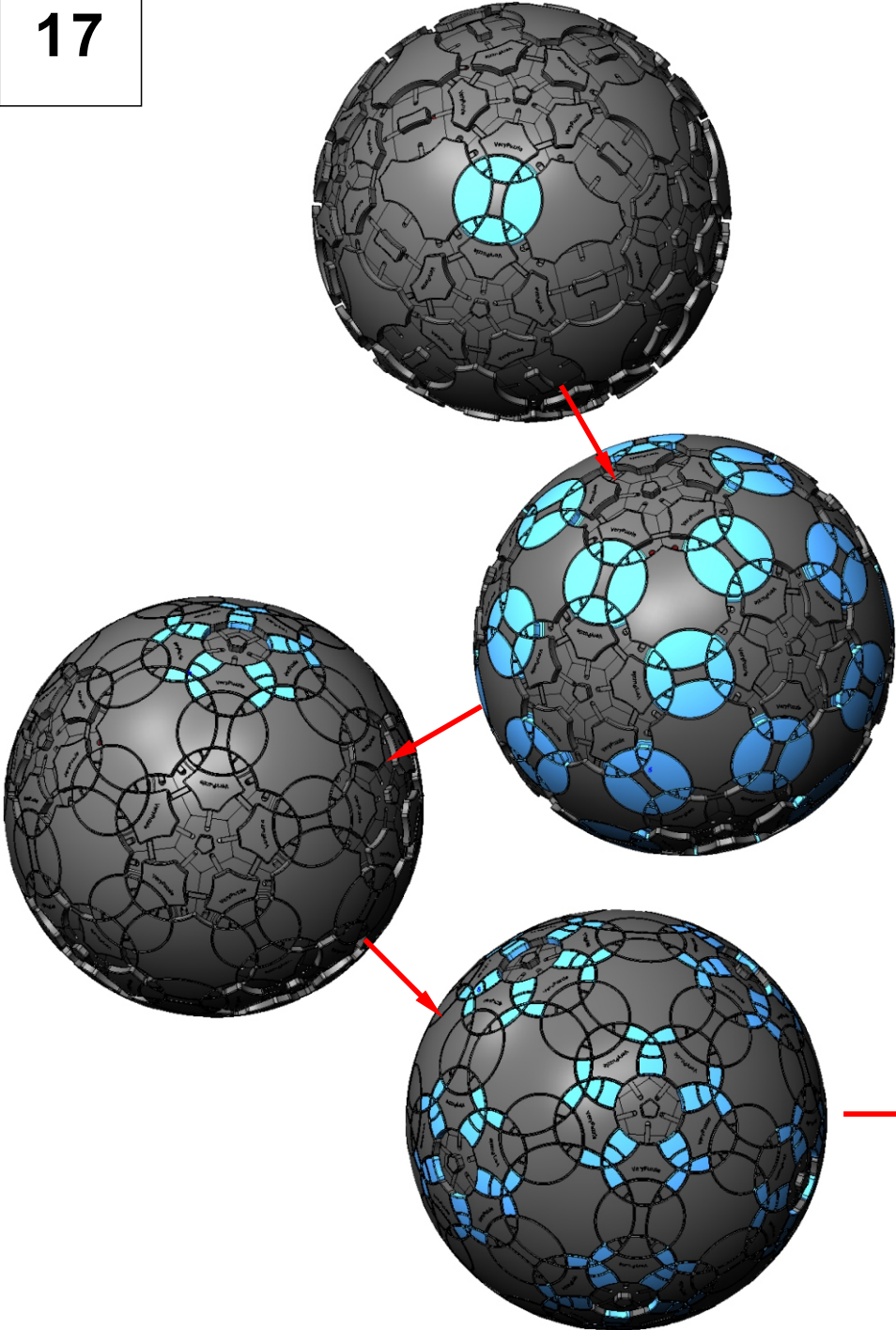
17



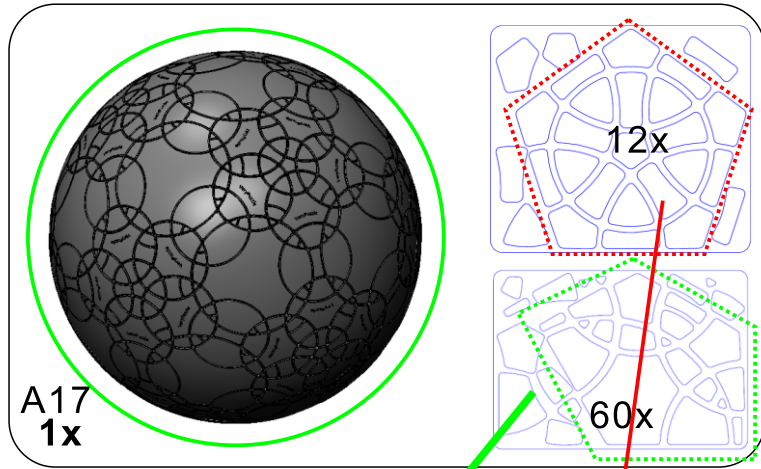
A5  
1x

+

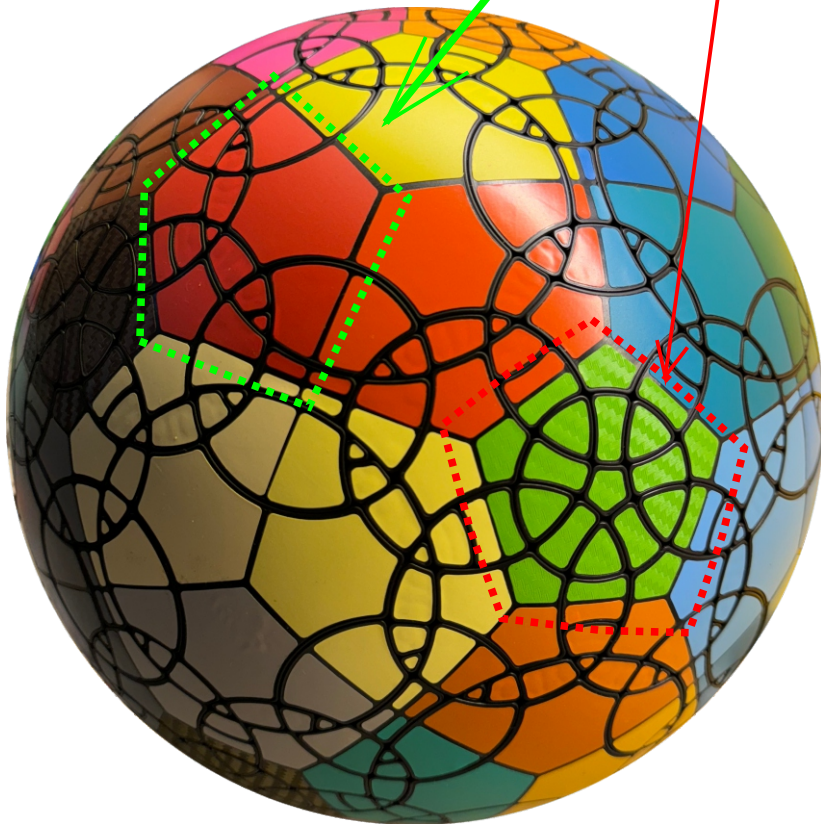
- A6 x60
- A7 x60
- A8 x180
- A9 x60
- A10 x60
- A11 x60
- A12 x60
- A13 x60
- A14 x60
- A15 x60
- A16 x60



18

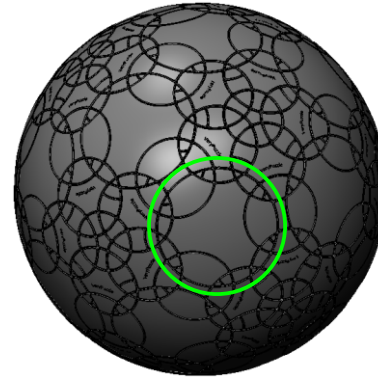


Clean part surface before applying stickers

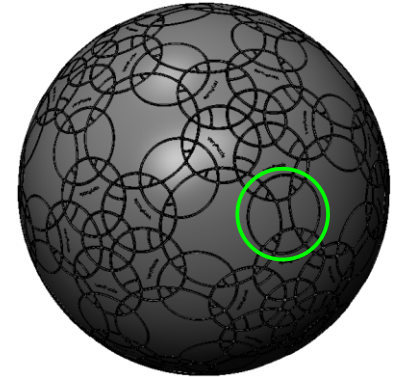


19

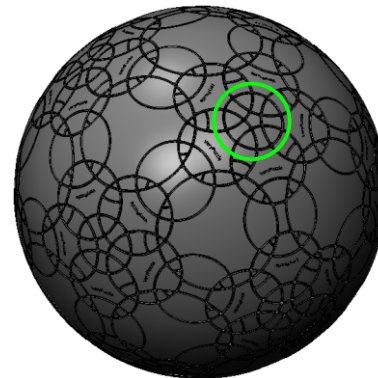
# Rotation Rules



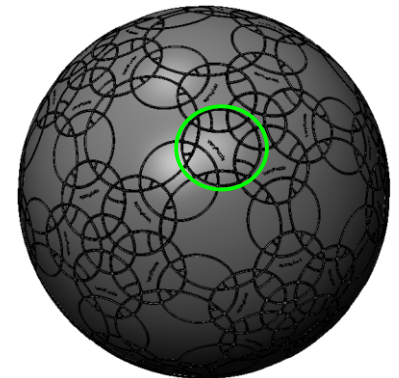
3-fold symmetry  
 Turns  $120 \cdot n$  degrees  
 R6 symmetry  
 Turns  $120 \cdot n + xxx$  degrees



2-fold symmetry  
 Turns  $180 \cdot n$  degrees

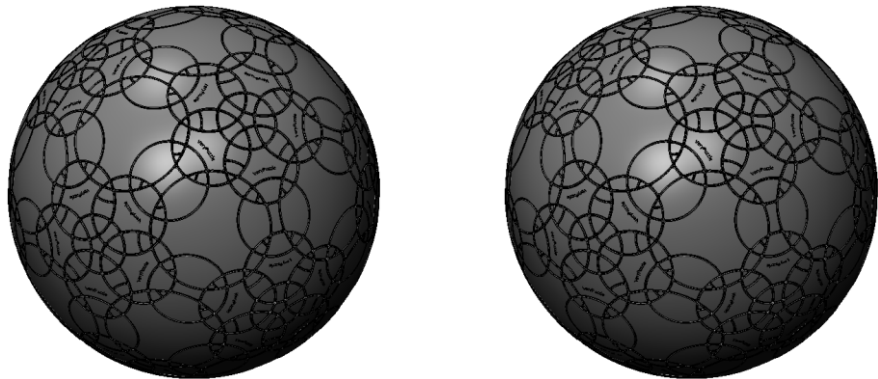
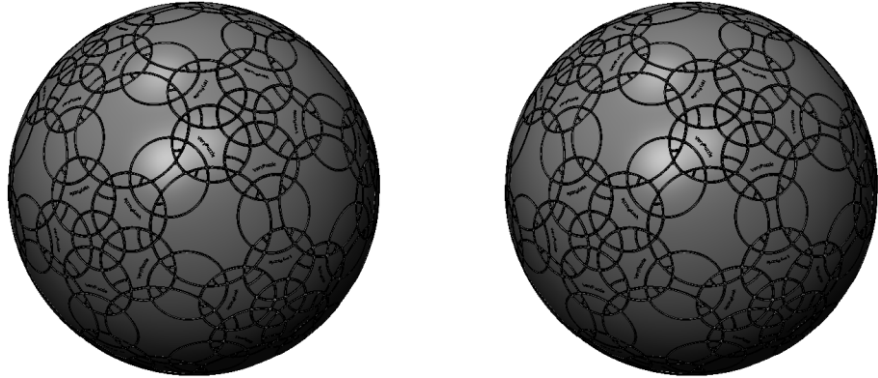


5-fold symmetry  
 Turns  $72 \cdot n$  degrees

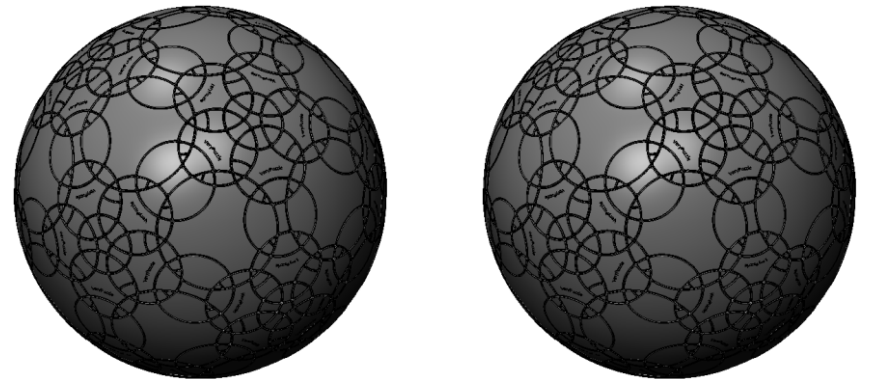
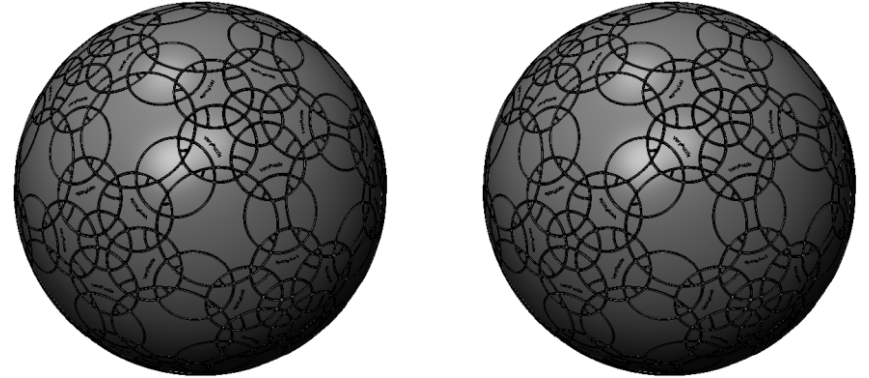


R2&R3 symmetry

# Notations and Algorithms

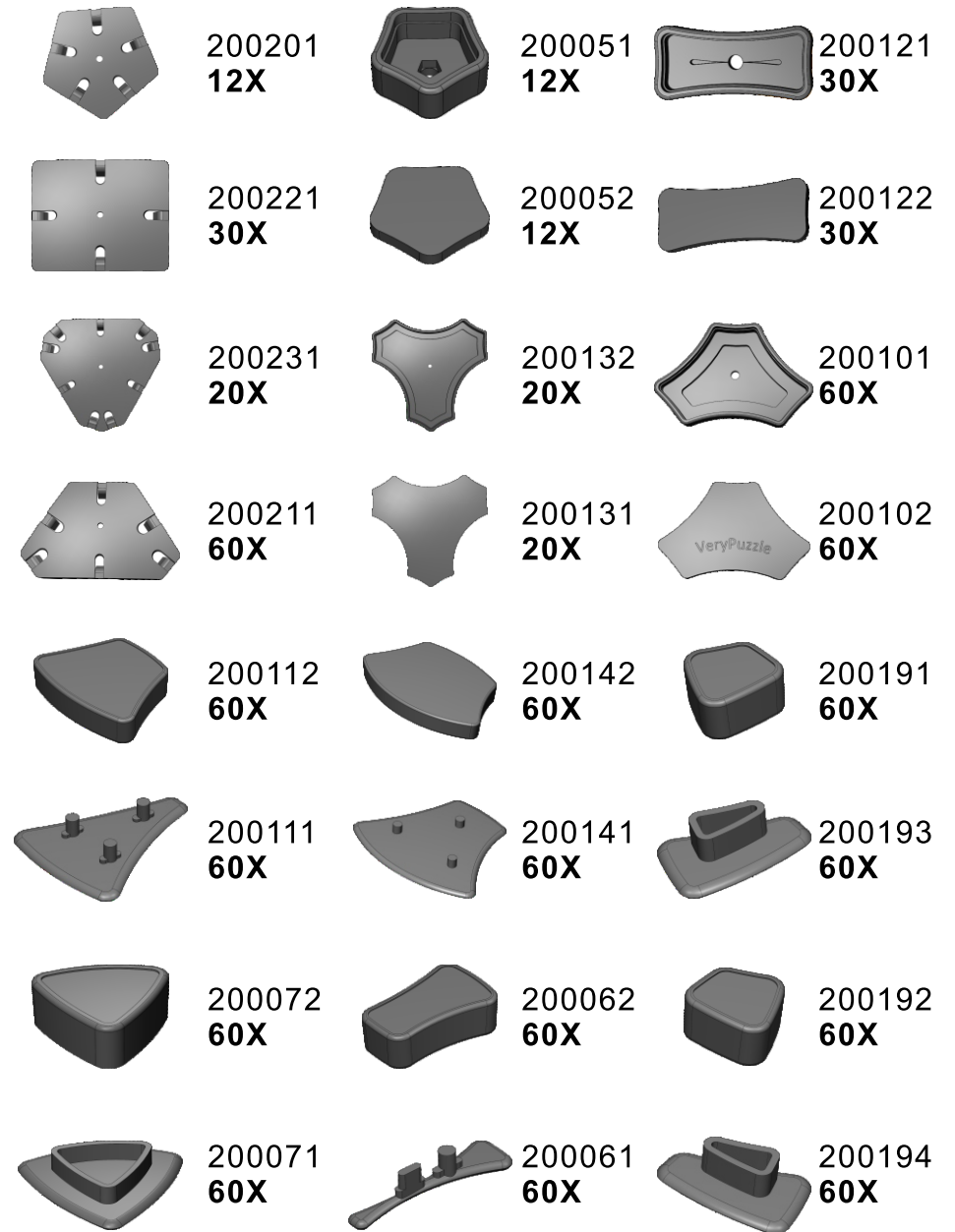


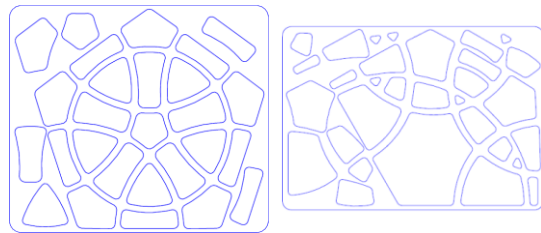
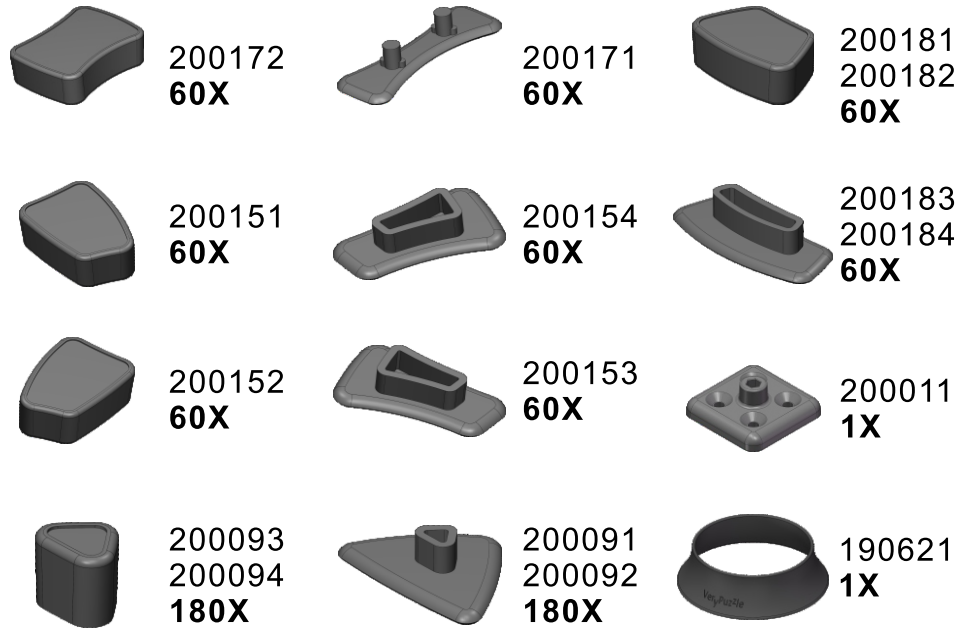
# Notations and Algorithms



# Product Information Card

<b>Product Name</b>	DIRT-DCL-F1
<b>Model NO.</b>	#94
<b>Design</b>	VeryPuzzle Co., Ltd(HK)
<b>Manufacturer</b>	VeryPuzzle Co., Ltd(HK)
<b>Year of release</b>	2023
<b>Maximum diameter</b>	265 mm
<b>Visible moving parts</b>	902 pcs
<b>Coloring strategy</b>	Voronoi
<b>Number of colors</b>	72 colors
<b>Sticker type</b>	textured, uniform matte
<b>Sticker protection</b>	Yes
<b>Number of sticker pieces</b>	1332 pcs
<b>Axis &amp; Symmetry</b>	D(C5)+I(C3+R6)+RT(C2)+DCL(R3+R2)
<b>Maximum parts shared between two axes</b>	4 parts
<b>In-core spring</b>	Yes
<b>Adjustable tension</b>	No
<b>Technical Name</b>	D111RT1-DCL3-F1
<b>Topological Print</b>	D(9.5)I(19)RT(12.5)DCL(12.5)
<b>Core specification</b>	DIRT-DCL-250





12x

60x

## Customer Service

1. [support@verypuzzle.com](mailto:support@verypuzzle.com)



# VeryPuzzle