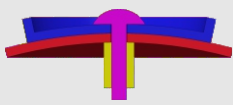
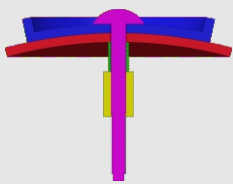
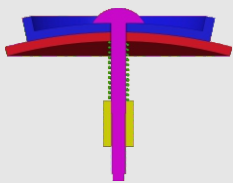
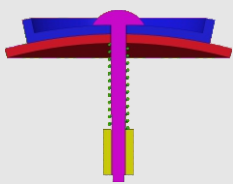


How to tighten the screws

Find your model in the table

Assembly section	Tightness	Models
	tight (no spring)	#61,#75
	tight (spring in green) (Short screw is recommended)	#72,#73,#77,#87,#88 #89
	medium (spring in green)	#94,#93,#90,#86,#85 #83,#82,#81,#80,#79 #78,#76,#71,#70,#69 #68,#67,#66,#65,#64 #63,#62,#60,#59
	loose (spring in green)	Mostly applicable to 'medium' category. Not recommended in general.

1. Tighter is usually better since the spring we provide is soft.
2. Early products had been using longer screws. You can either insert thick washer when necessary or request for short screws in the <Accessory & free parts> directory at our homepage:
<https://www.verypuzzle.com>

VeryPuzzle
2024/04

VeryPuzzle



Rhombic Tuttminx V1.0

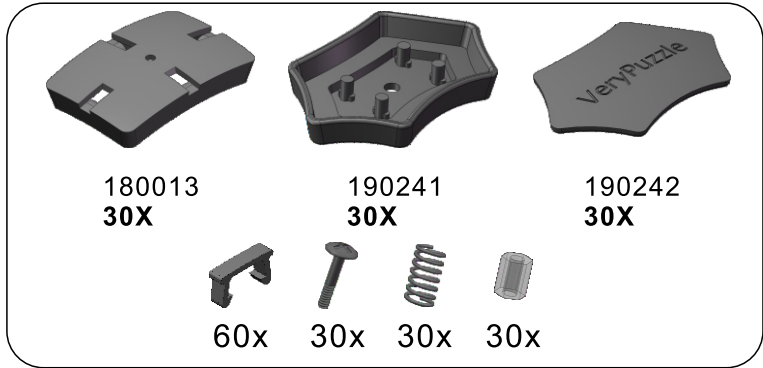
D1RT5-M5

#63

800+ parts
42 axes



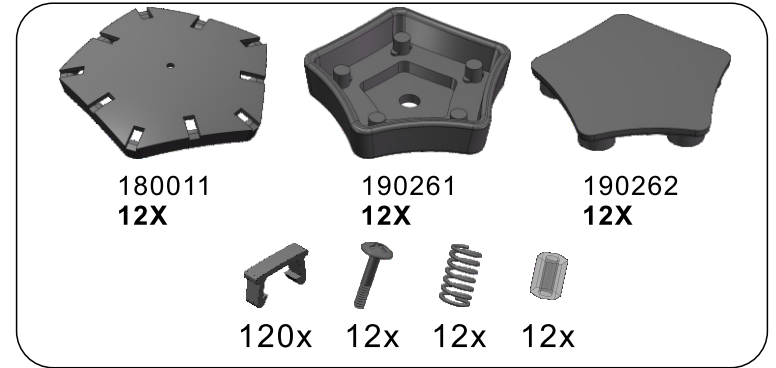
1



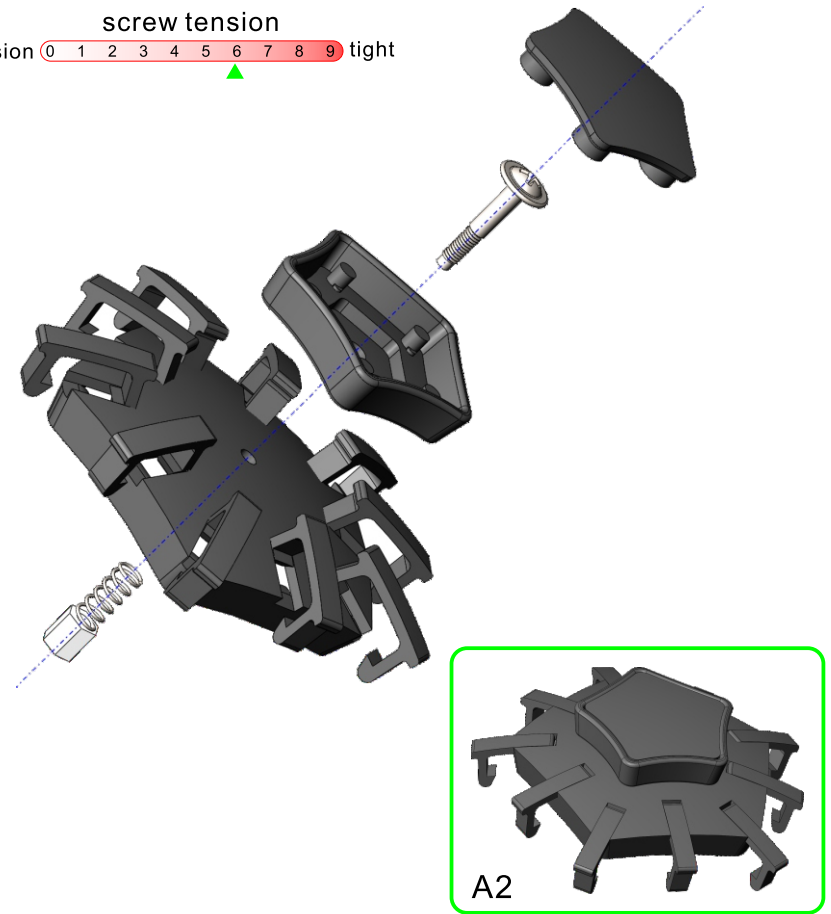
screw tension
no tension 0 1 2 3 4 5 6 7 8 9 tight



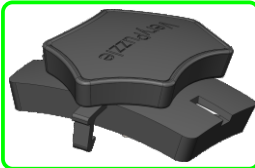
2



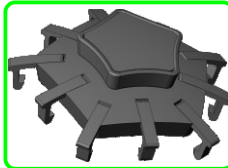
screw tension
no tension 0 1 2 3 4 5 6 7 8 9 tight



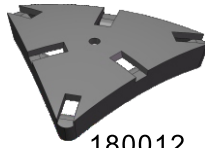
3



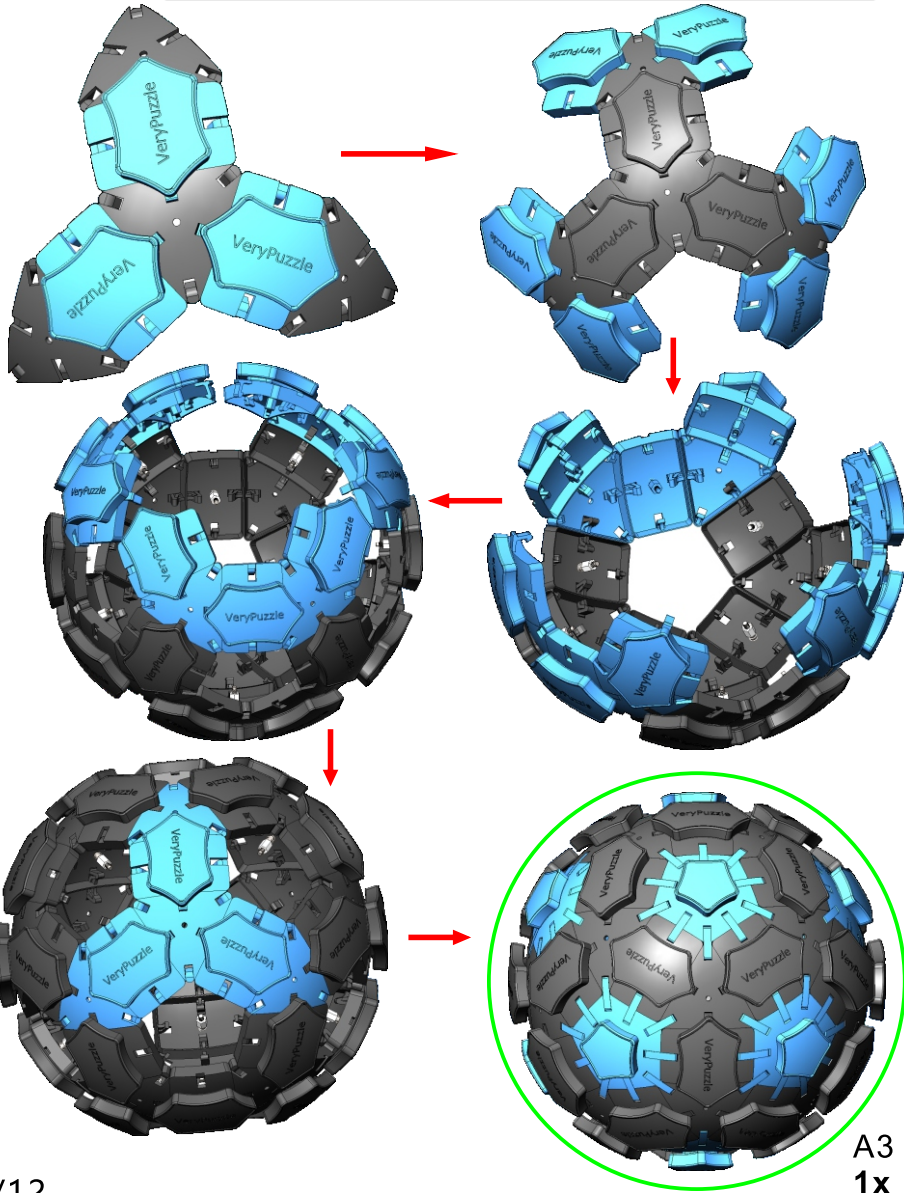
A1 30x



A2 12x



180012
20x

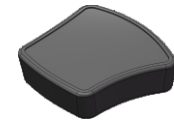


A3
1x

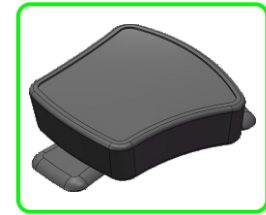
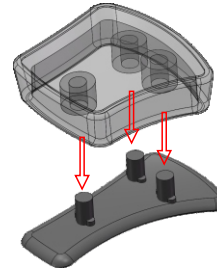
4



190302
60x

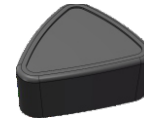


190301
60x



A4
60x

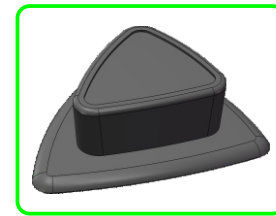
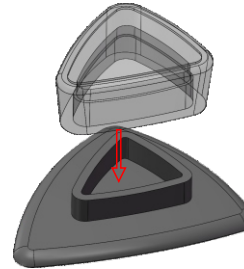
5



190294
60x

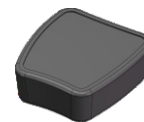


190292
60x

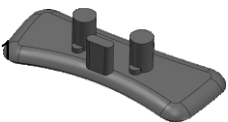


A5
60x

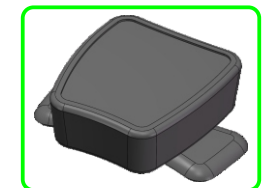
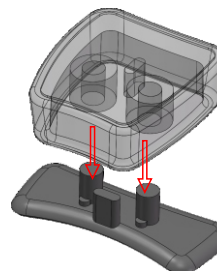
6



190291
60x

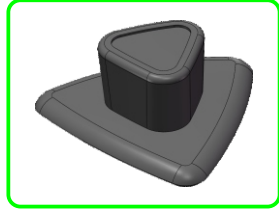
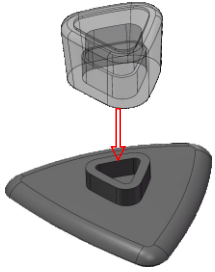


190293
60x



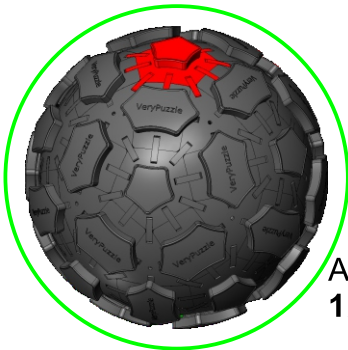
A6
60x

7



A7
20x

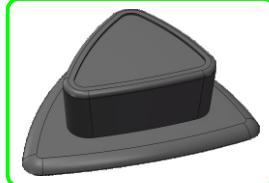
8



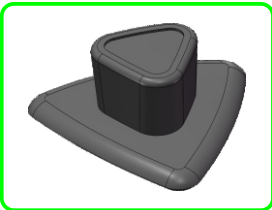
A3
1x



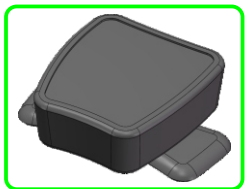
A4
60x



A5
60x

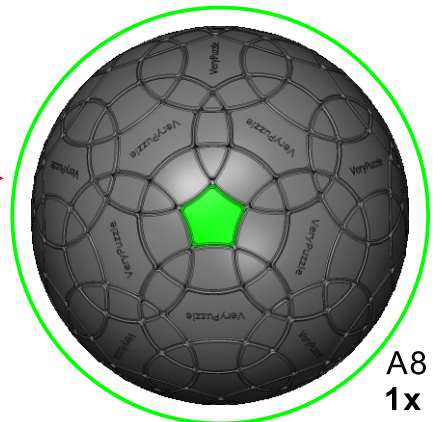
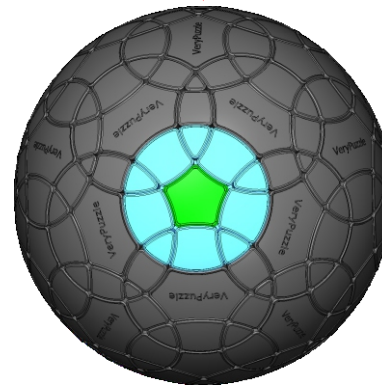
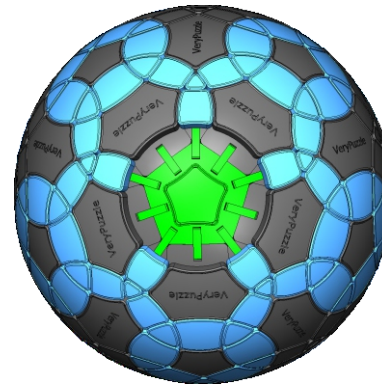
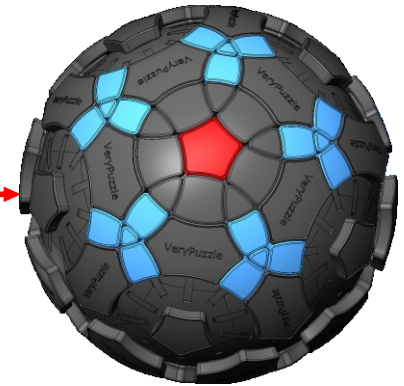
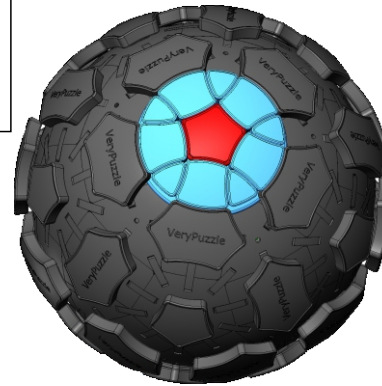


A7
20x



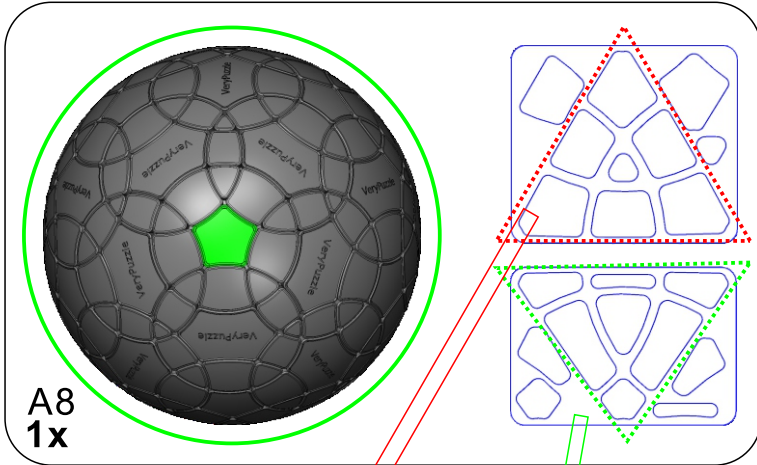
A6
60x

8



A8
1x

9



Clean part surface before applying stickers



10

Rotation Rules

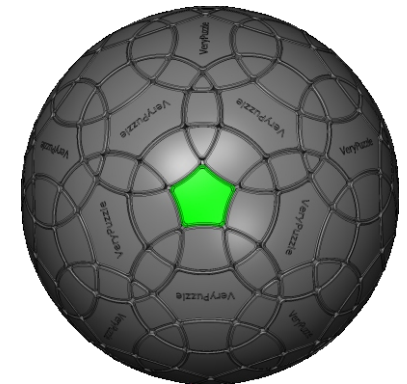
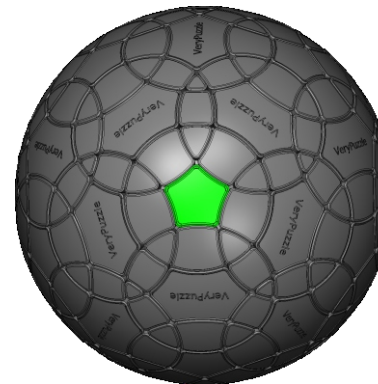


5-fold symmetry
Turns $72 \cdot n$ degrees

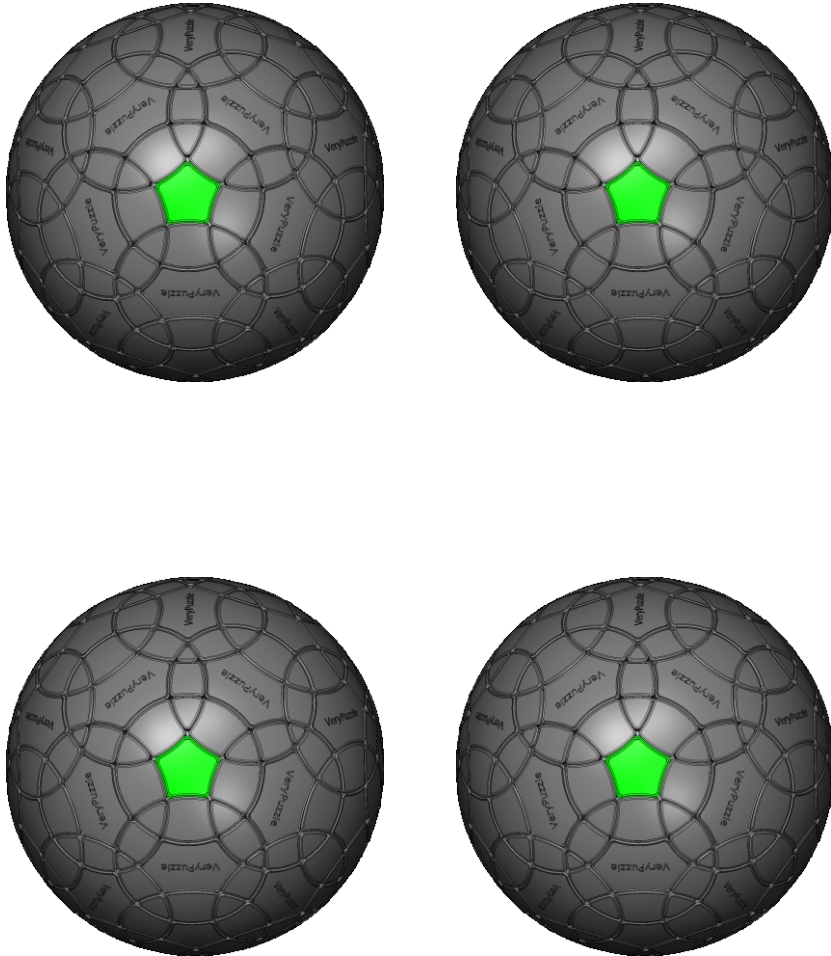


R4 symmetry
Turns $180 \cdot n$ degrees
Turns $180 \cdot n + 63.4$ degrees

Notations and Algorithms

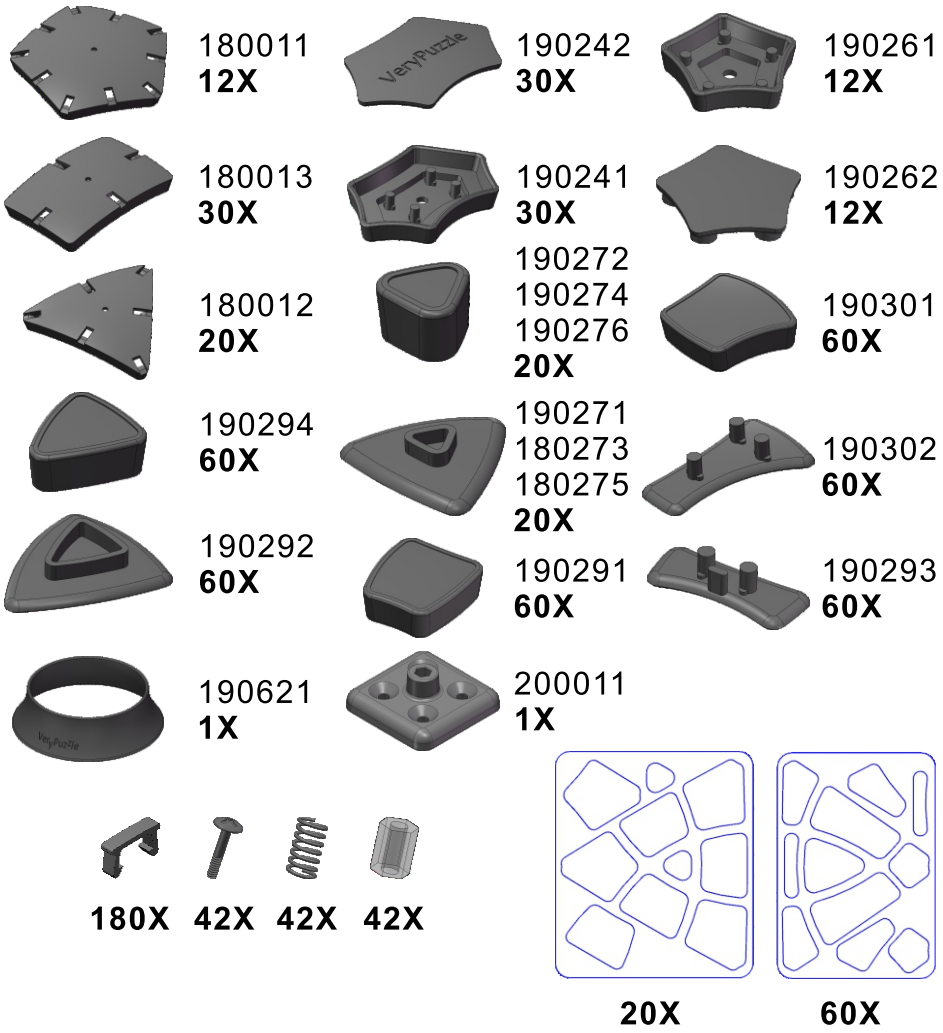


Notations and Algorithms



Product Information Card

Product Name	Rhombic Tuttminx V1.0
Model NO.	#63
Design	VeryPuzzle Co., Ltd(HK)
Manufacturer	VeryPuzzle Co., Ltd(HK)
Year of release	2019
Maximum diameter	145 mm
Visible moving parts	242 pcs
Coloring strategy	Delauney triangulation
Number of colors	80 colors
Sticker type	textured, flare, uniform
Sticker protection	Yes
Number of sticker pieces	560 pcs
Axis & Symmetry	$D(C5)+RT(R4)$
Maximum parts shared between two axes	3 parts
In-core spring	Yes
Adjustable tension	No
Technical Name	D23RT24
Topological Print	D23RT24
Core specification	DIRT130



Customer Service

1. support@verypuzzle.com

