
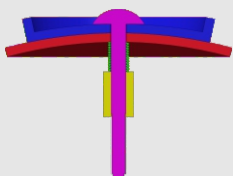
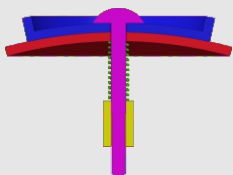
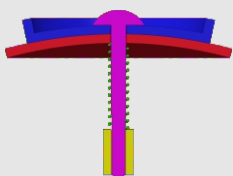


## How to tighten the screws

Find your model in the table

Assembly section	Tightness	Models
	tight (no spring)	#61,#75
	tight (spring in green)  (Short screw is recommended)	#72,#73,#77,#87,#88 #89
	medium (spring in green)	#94,#93,#90,#86,#85 #83,#82,#81,#80,#79 #78,#76,#71,#70,#69 #68,#67,#66,#65,#64 #63,#62,#60,#59
	loose (spring in green)	Mostly applicable to 'medium' category.  Not recommended in general.

1. Tighter is usually better since the spring we provide is soft.
2. Early products had been using longer screws. You can either insert thick washer when necessary or request for short screws in the <Accessory & free parts> directory at our homepage:  
<https://www.verypuzzle.com>

VeryPuzzle  
2024/04

# VeryPuzzle

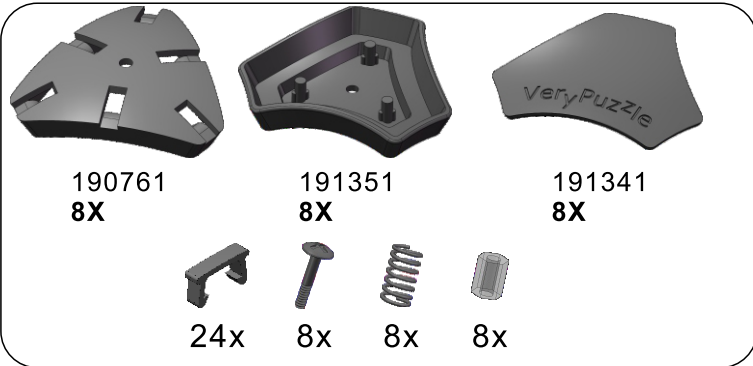


**C103-M5-L2**  
**#87**

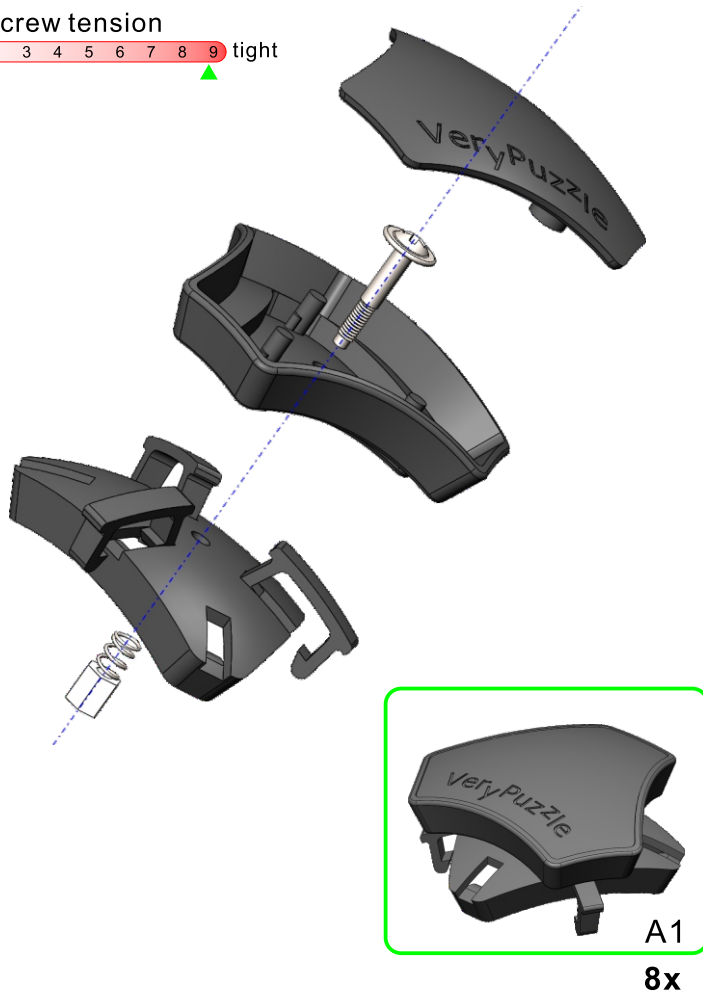
700+ parts  
14 axes



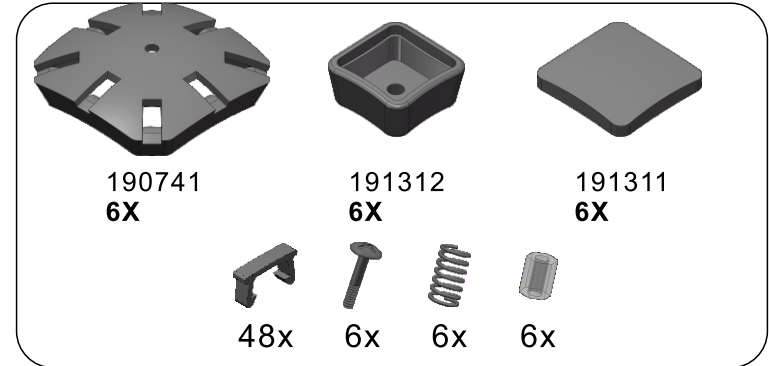
1



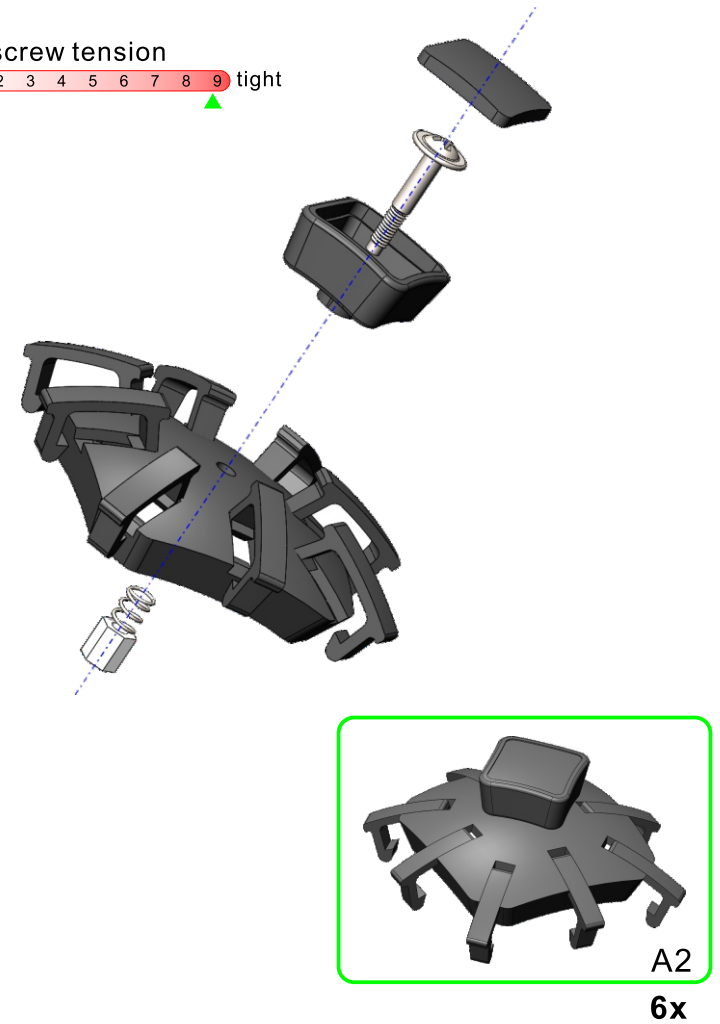
screw tension  
no tension 0 1 2 3 4 5 6 7 8 9 tight



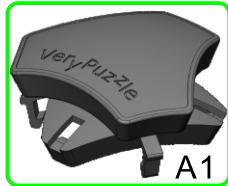
2



screw tension  
no tension 0 1 2 3 4 5 6 7 8 9 tight

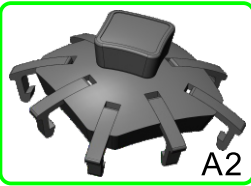


3



A1

8x



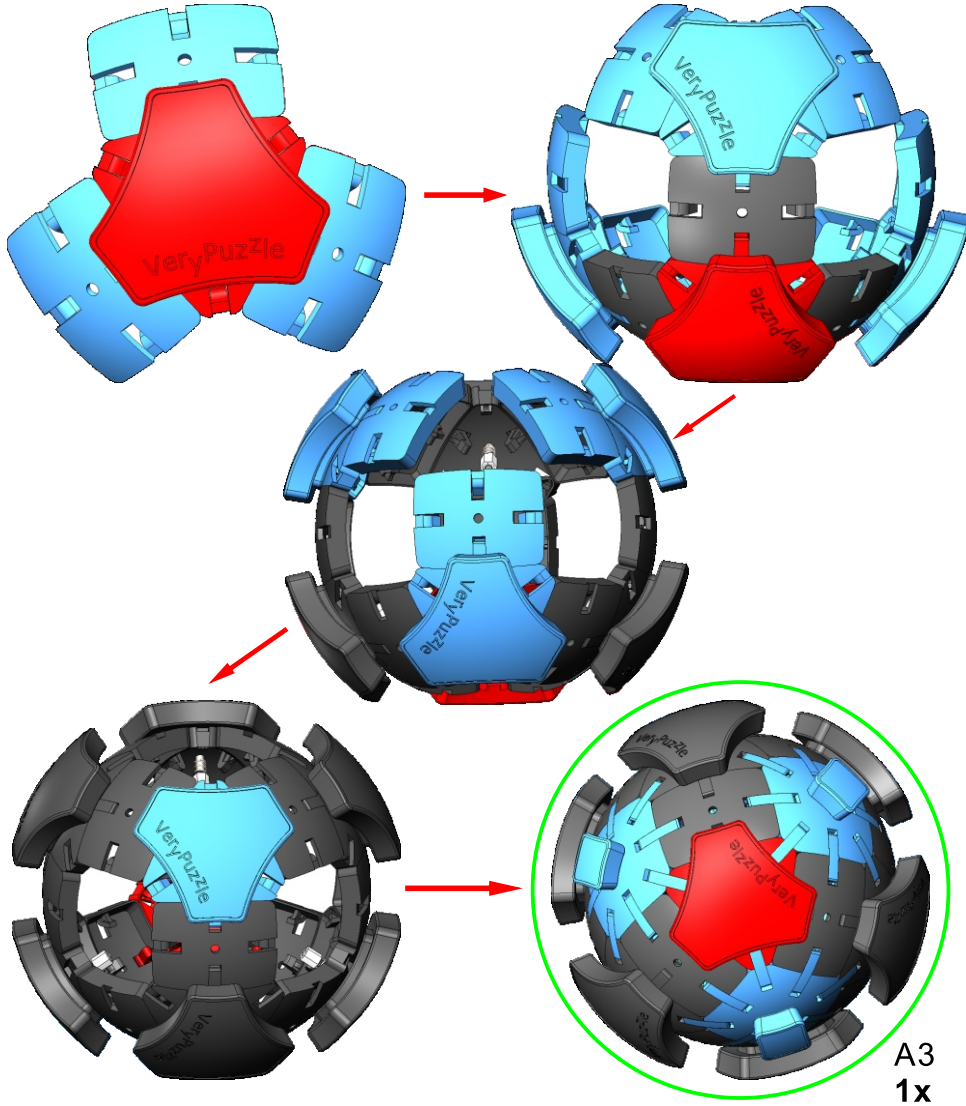
A2

6x



190751

12X



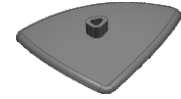
A3

1x

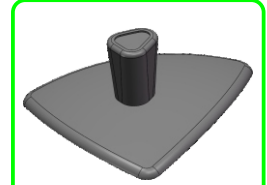
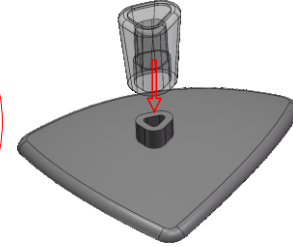
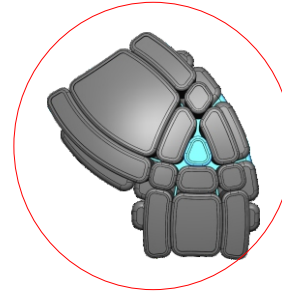
4



191375  
24X



191371  
24X



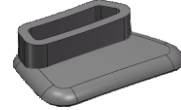
A4

24x

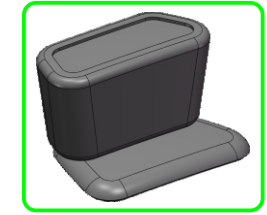
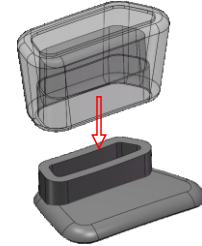
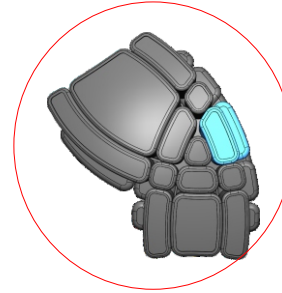
5



191362  
24X



191363  
24X



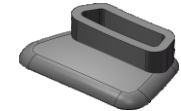
A5

24x

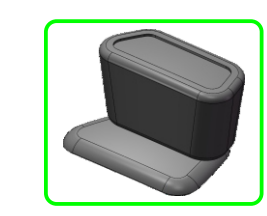
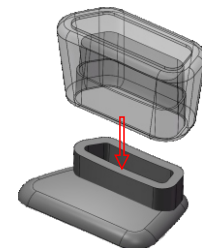
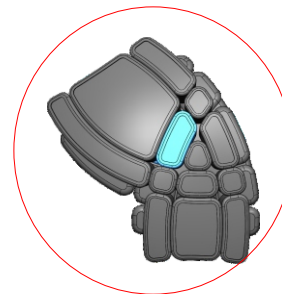
6



191361  
24X



191364  
24X



A6

24x

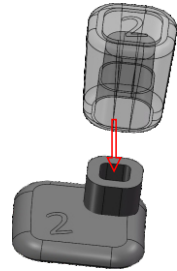
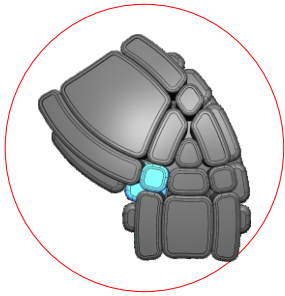
7



191367  
24X



191365  
24X

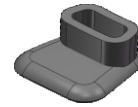


A7  
24x

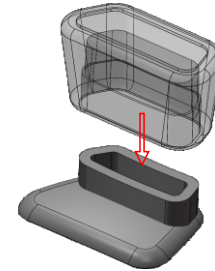
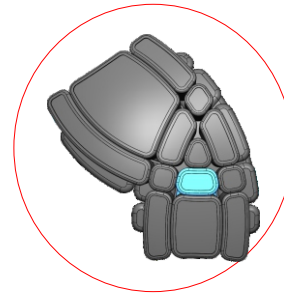
10



191376  
24X



191372  
24X



A10  
24x

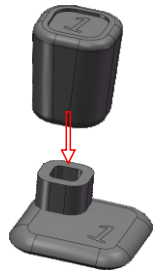
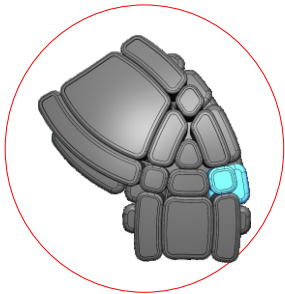
8



191368  
24X



191366  
24X



A8  
24x

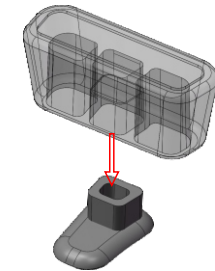
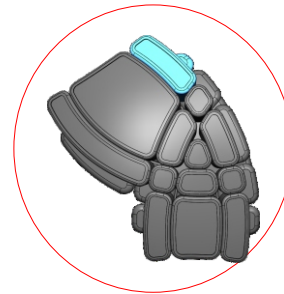
11



191324  
24X



191323  
24X



A11  
24x

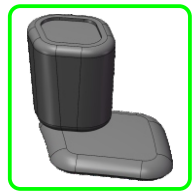
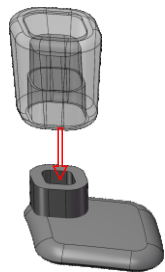
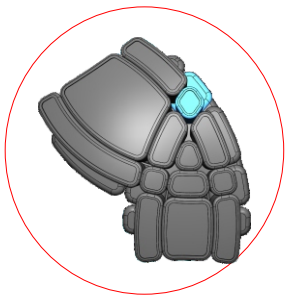
9



191374  
24X

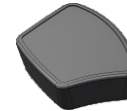


191373  
24X



A9  
24x

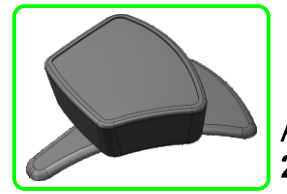
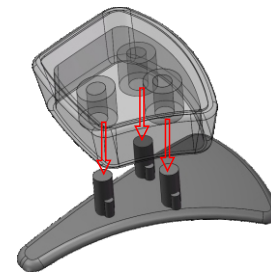
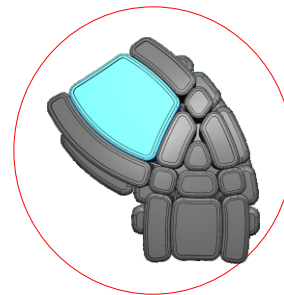
12



191331  
24X



191332  
24X

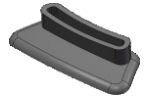


A12  
24x

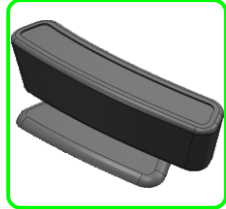
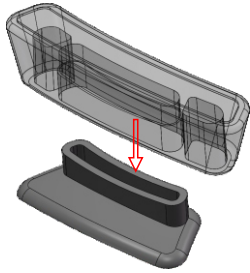
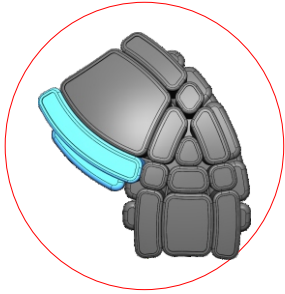
13



191321  
24X

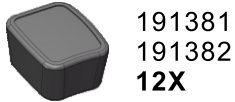


191322  
24X

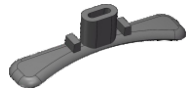


A13  
24x

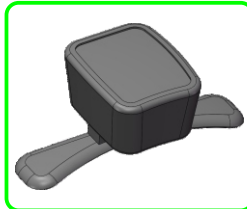
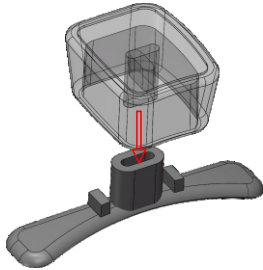
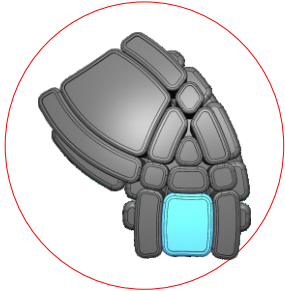
14



191381  
191382  
12X



191383  
191384  
12X



A14  
12x

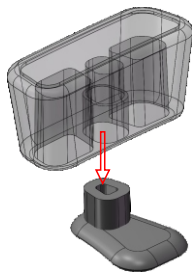
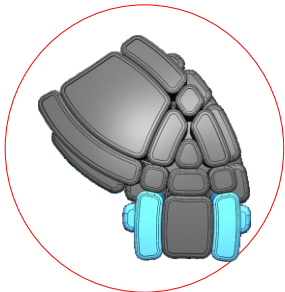
15



191391  
191392  
24X

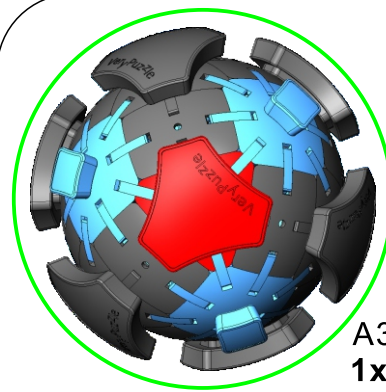


191393  
191394  
24X

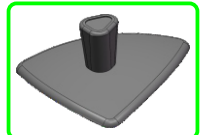


A15  
324x

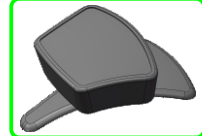
16



A3  
1x



A4  
24x



A12  
24x



A11  
24x



A5  
24x



A8  
24x



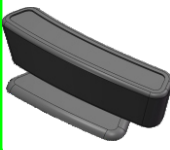
A10  
24x



A6  
24x



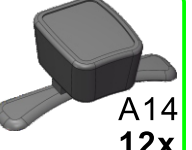
A9  
24x



A13  
24x



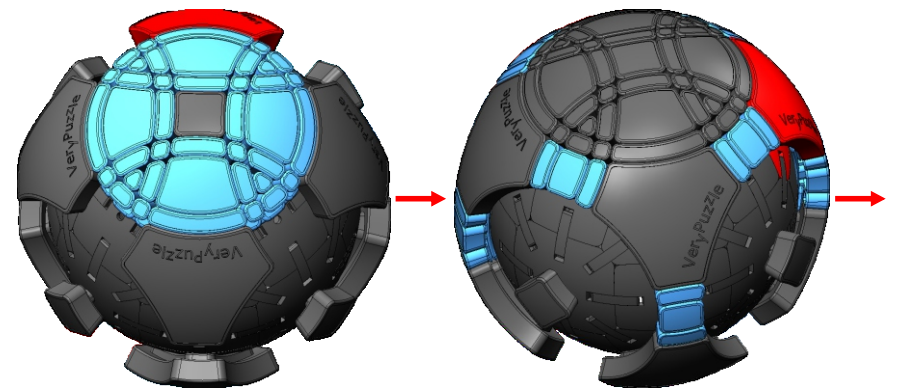
A7  
24x



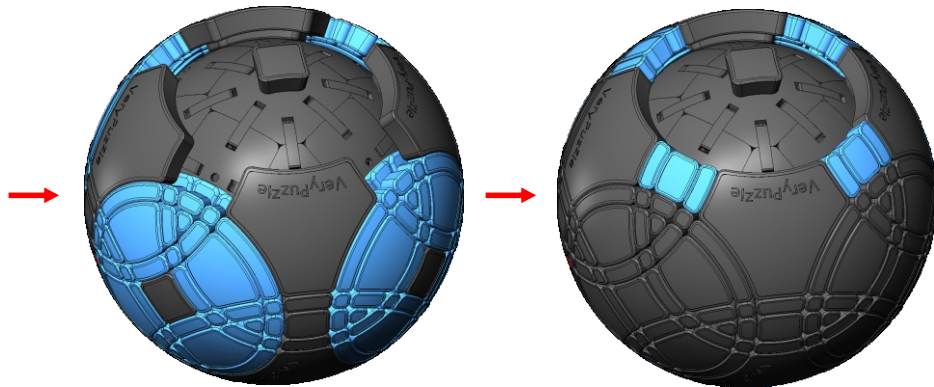
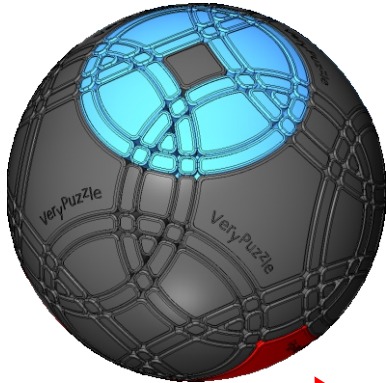
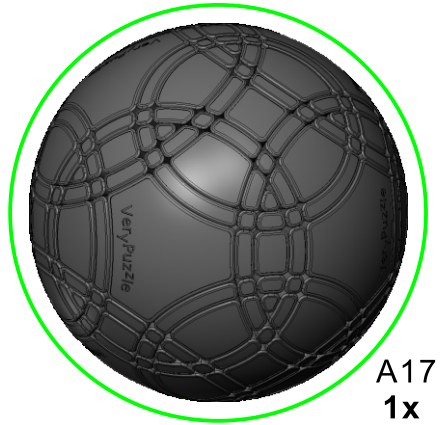
A14  
12x



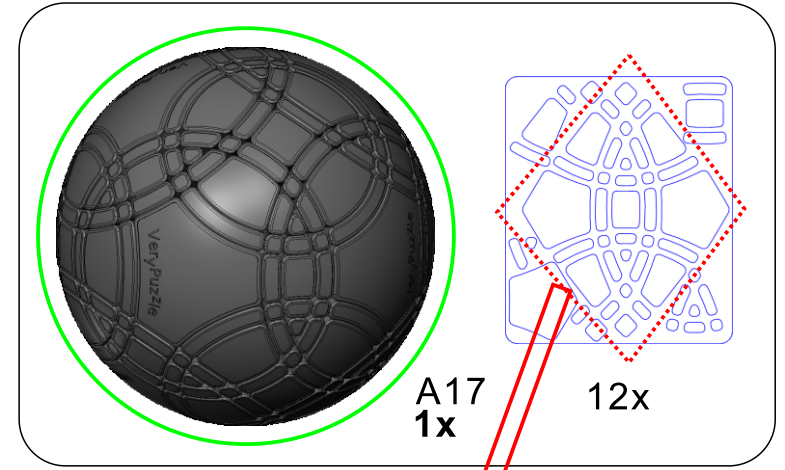
A15  
24x



16



17



Clean part surface  
before applying stickers



18

## Rotation Rules

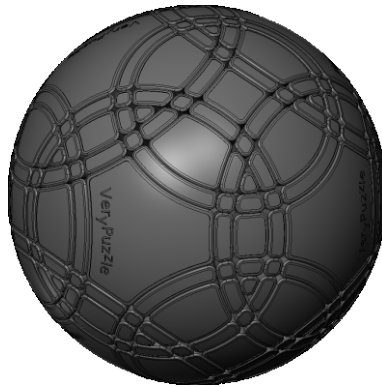
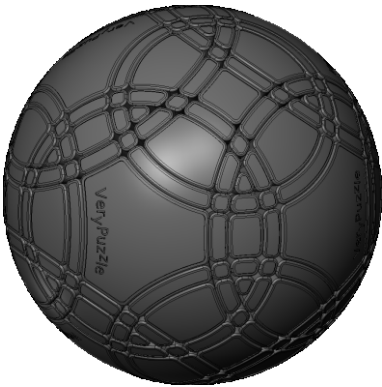


3-fold symmetry  
Turns  $120 \cdot n$  degrees

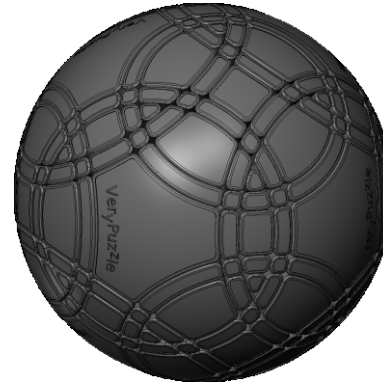


4-fold symmetry  
Turns  $90 \cdot n$  degrees

## Notations and Algorithms

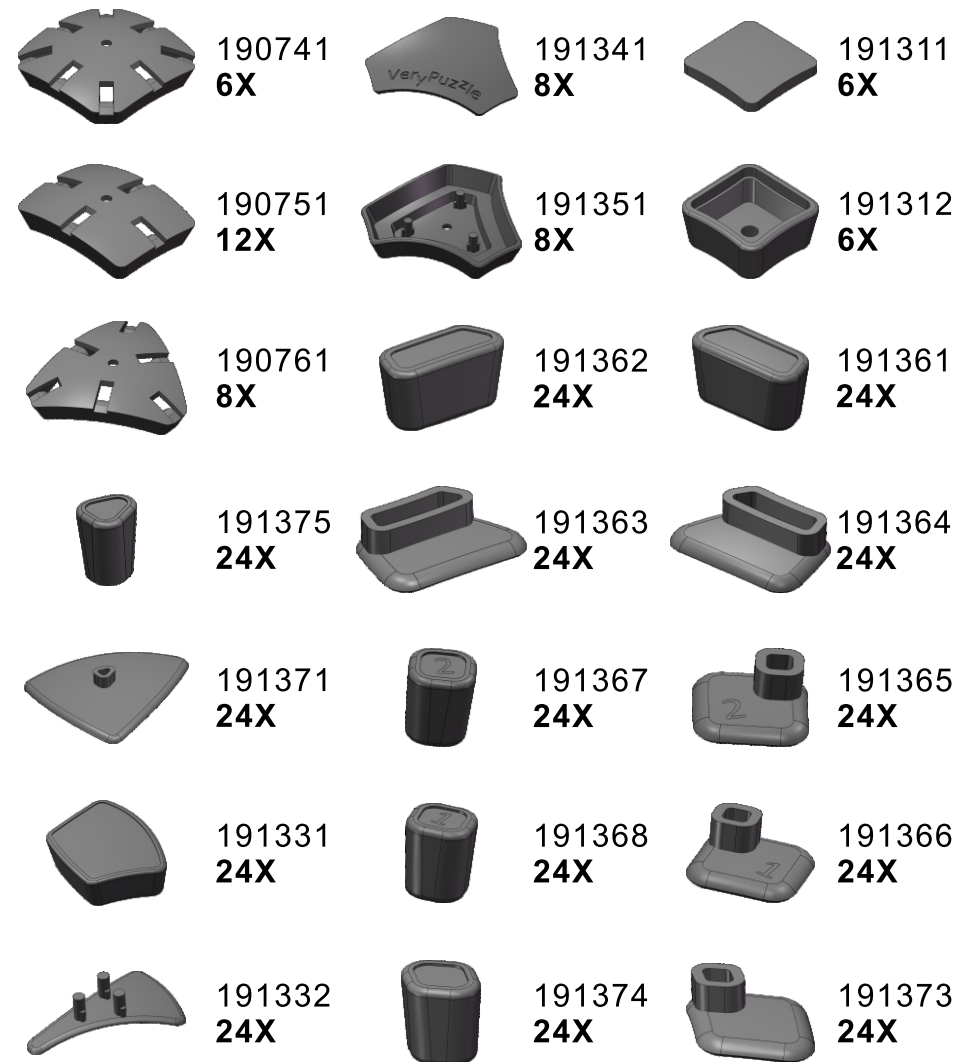


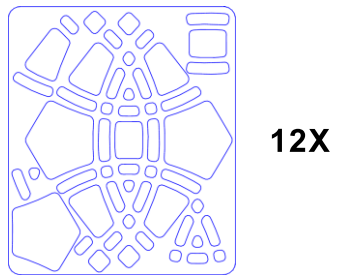
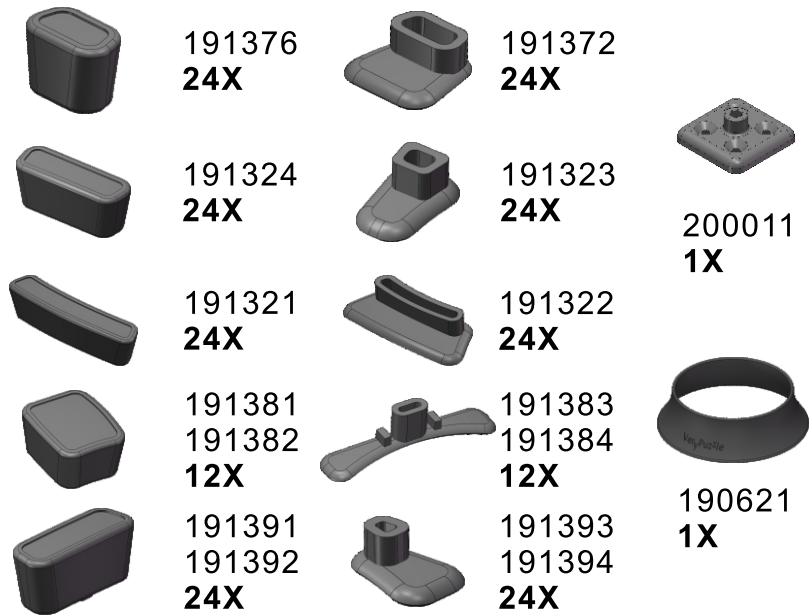
## Notations and Algorithms



# Product Information Card

<b>Product Name</b>	C1O3-M5-L2
<b>Model NO.</b>	#87
<b>Design</b>	VeryPuzzle Co., Ltd(HK)
<b>Manufacturer</b>	VeryPuzzle Co., Ltd(HK)
<b>Year of release</b>	2020
<b>Maximum diameter</b>	115 mm
<b>Visible moving parts</b>	294 pcs
<b>Coloring strategy</b>	dual Voronoi
<b>Number of colors</b>	12 colors
<b>Sticker type</b>	textured
<b>Sticker protection</b>	Yes
<b>Number of sticker pieces</b>	396 pcs
<b>Axis &amp; Symmetry</b>	C(C4)+O(C3)
<b>Maximum parts shared between two axes</b>	16 parts
<b>In-core spring</b>	Yes
<b>Adjustable tension</b>	No
<b>Technical Name</b>	C1O3-M5-L2
<b>Topological Print</b>	C{32,38}O{41,47}
<b>Core specification</b>	CORD80





## Customer Service

1. [support@verypuzzle.com](mailto:support@verypuzzle.com)

