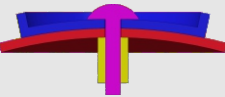
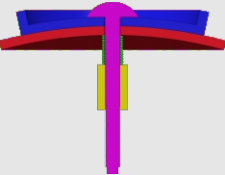
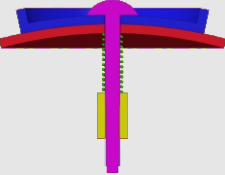
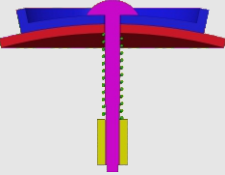


How to tighten the screws

Find your model in the table

Assembly section	Tightness	Models
	tight (no spring)	#61,#75
	tight (spring in green) (Short screw is recommended)	#72,#73,#77,#87,#88 #89,#84
	medium (spring in green)	#94,#93,#90,#86,#85 #83,#82,#81,#80,#79 #78,#76,#71,#70,#69 #68,#67,#66,#65,#64 #63,#62,#60,#59
	loose (spring in green)	Mostly applicable to 'medium' category. Not recommended in general.

1. Tighter is usually better since the spring we provide is soft.
2. Early products had been using longer screws. You can either insert thick washer when necessary or request for short screws in the <Accessory & free parts> directory at our homepage:
<https://www.verypuzzle.com>

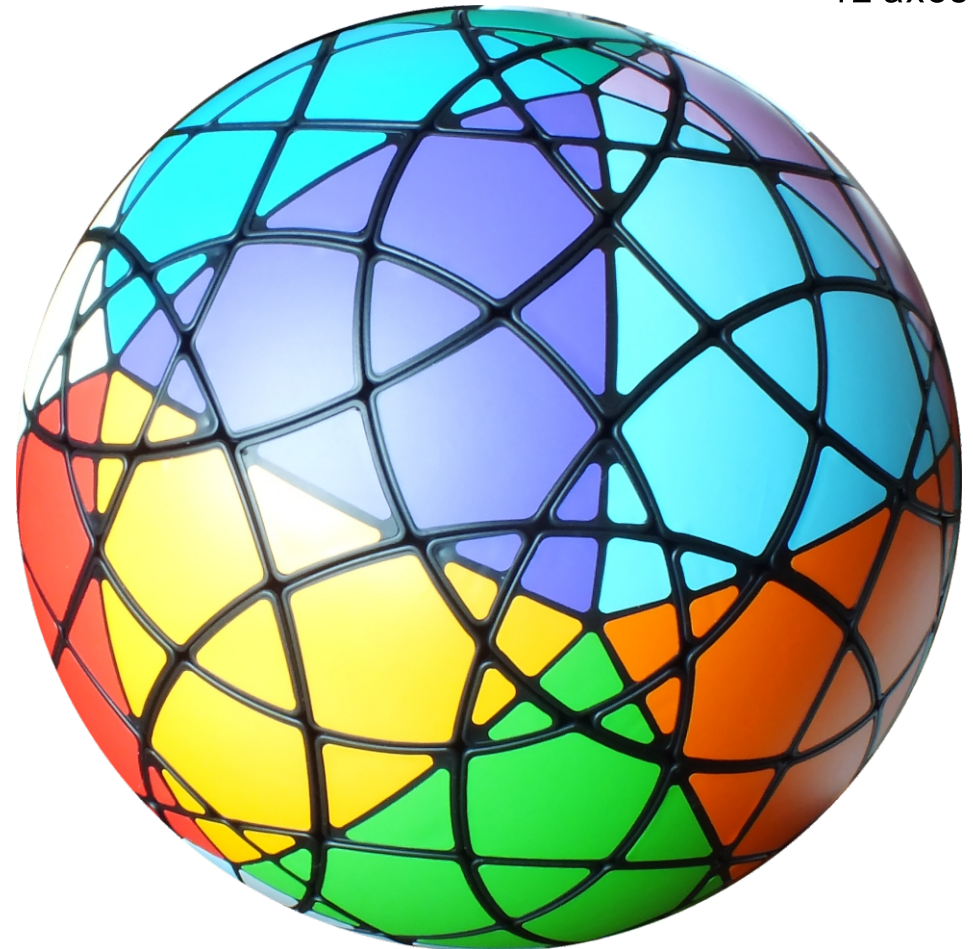
VeryPuzzle
2024/04

VeryPuzzle

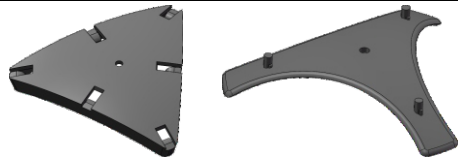


19
#84

800+ parts
12 axes



1



180012
20X

190321
20X



60x

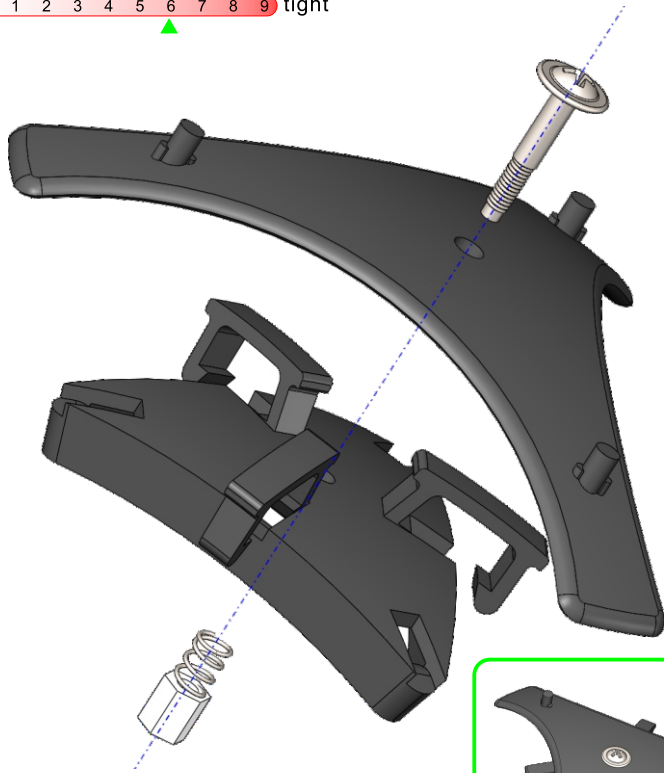
20x

20x

20x

screw tension

no tension 0 1 2 3 4 5 6 7 8 9 tight



A1

20x

2



180011
12X

190341
12X

190342
12X



120x

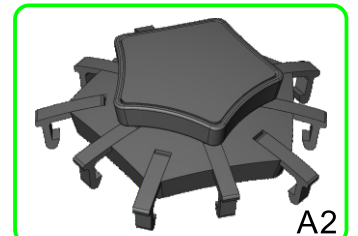
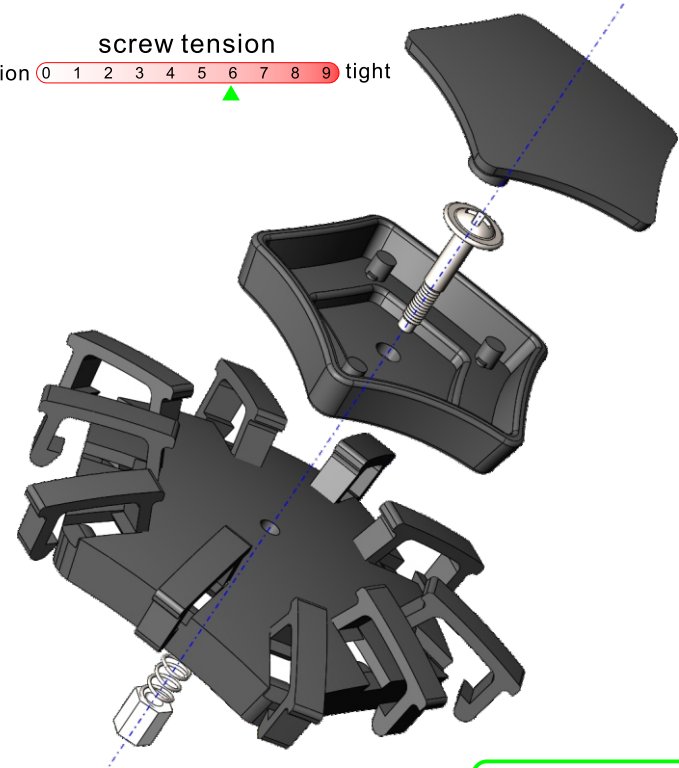
12x

12x

12x

screw tension

no tension 0 1 2 3 4 5 6 7 8 9 tight



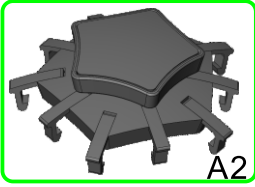
A2

12x

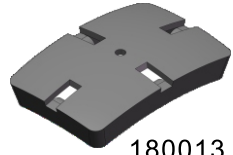
3



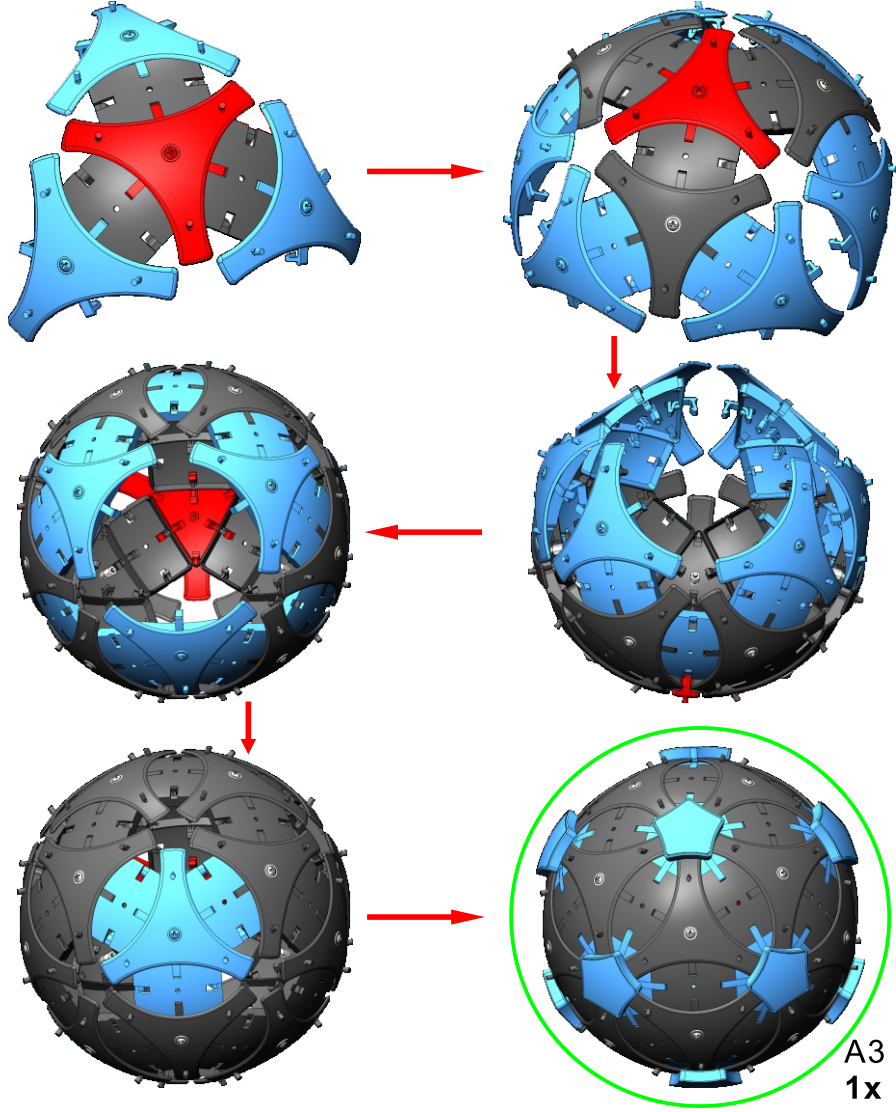
A1
20x



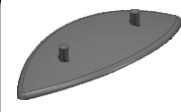
A2
12x



180013
30x



4



190331
30X



190332A2
30X



191181
30X



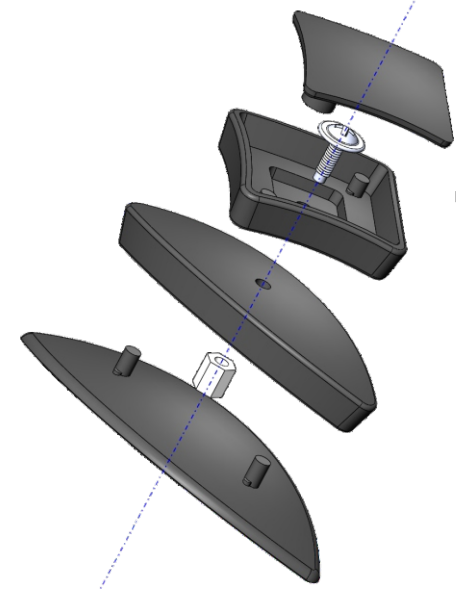
191182
30X



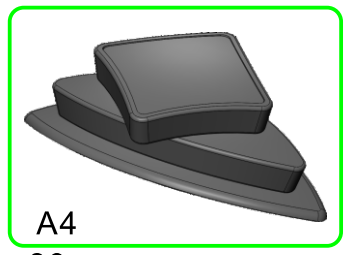
30x



30x



screw tension
no tension 0 1 2 3 4 5 6 7 8 9 tight



A4
30x

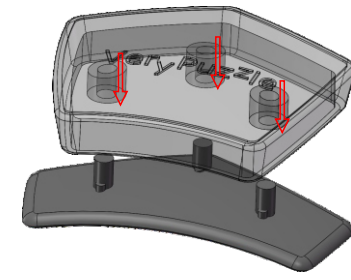
5



191151
60X



191152
60X

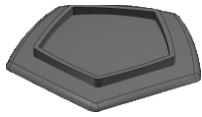


A5
60x

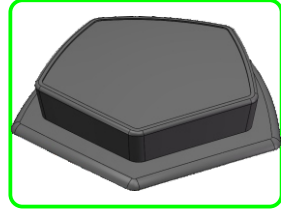
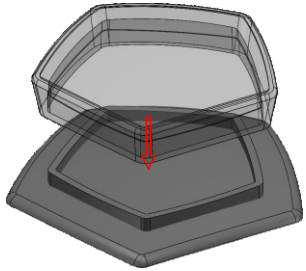
6



191161
12X

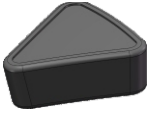


191162
12X



A6
12x

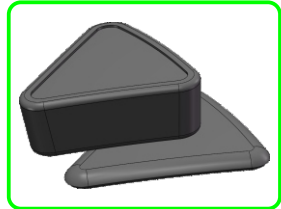
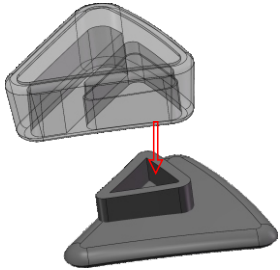
7



191171
191172
60X

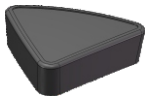


191173
191174
60X

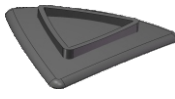


A7
60x

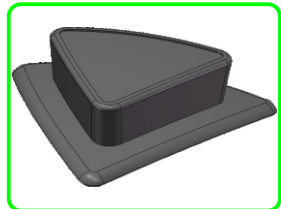
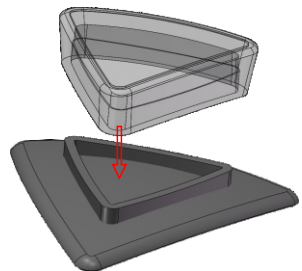
8



191141
20X

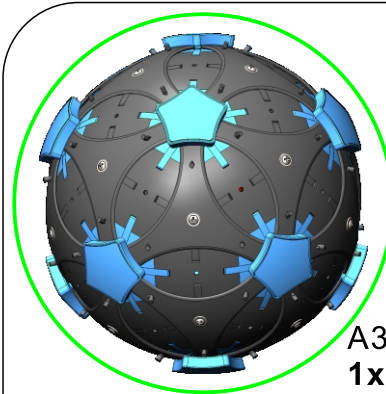


191142
20X

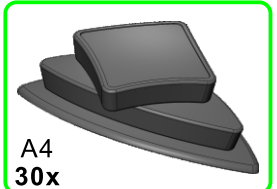


A8
20x

9



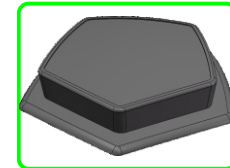
A3
1x



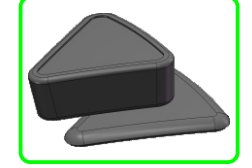
A4
30x



A5
60x



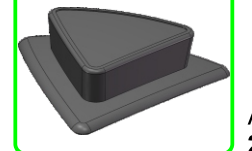
A6
12x



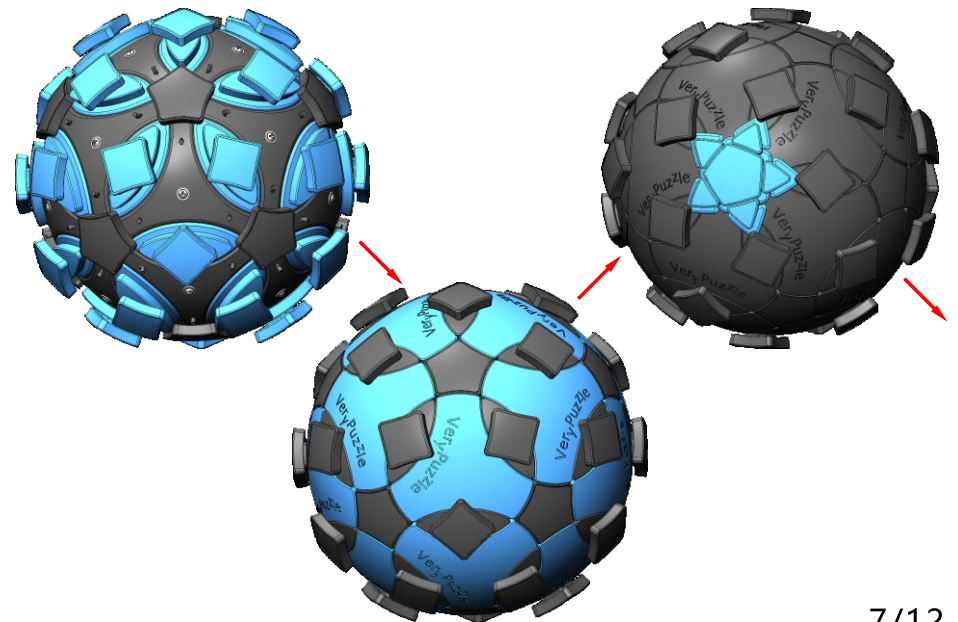
A7
60x



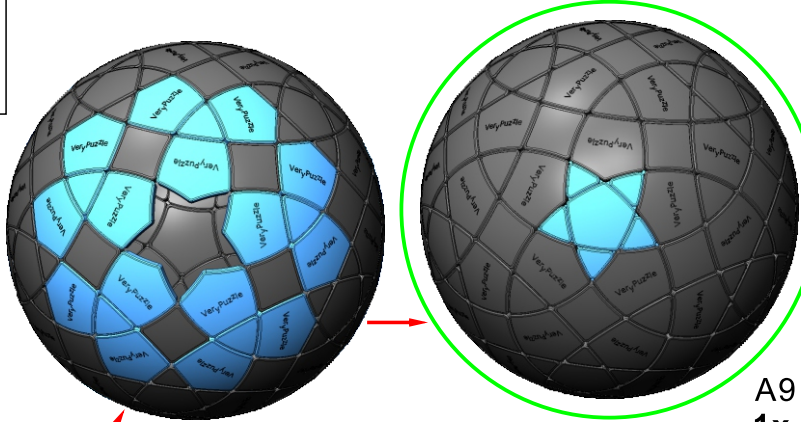
190311
20X



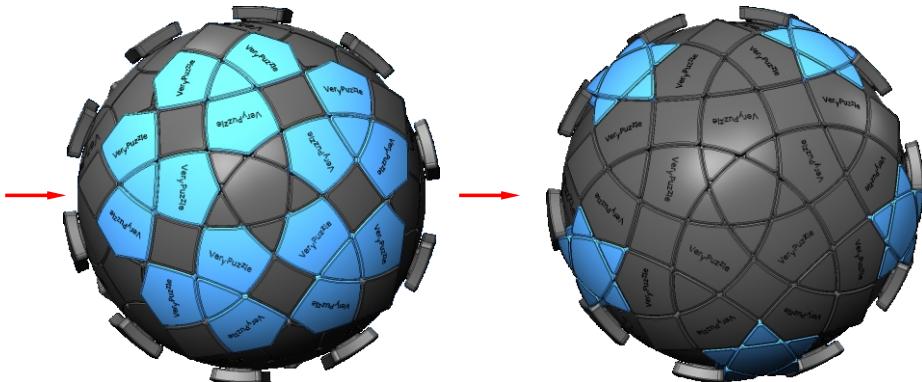
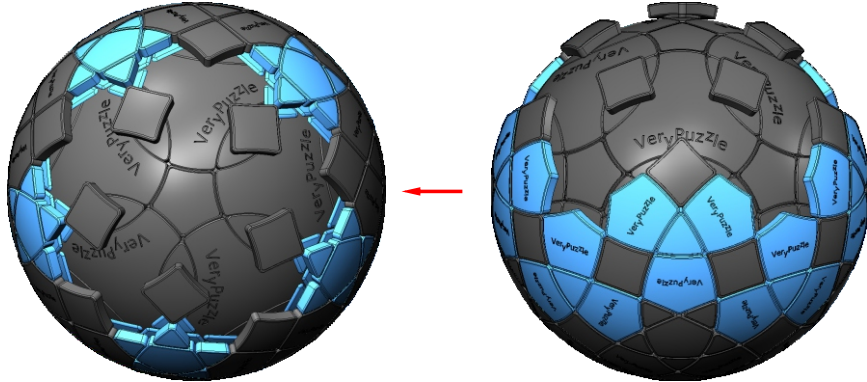
A8
20x



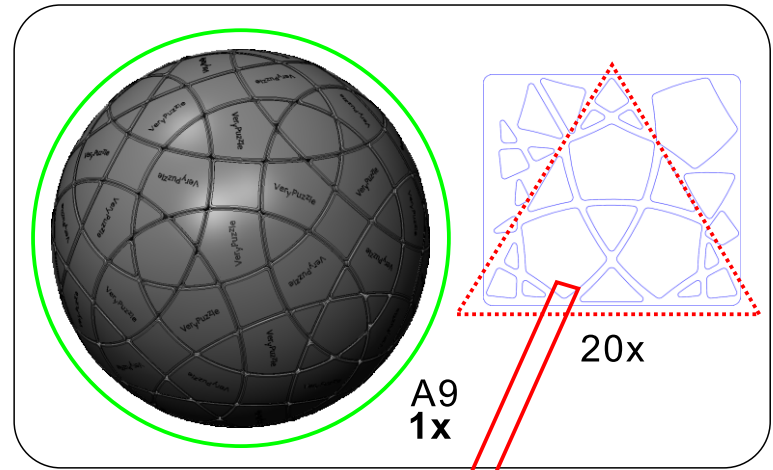
9



A9
1x



10



A9
1x

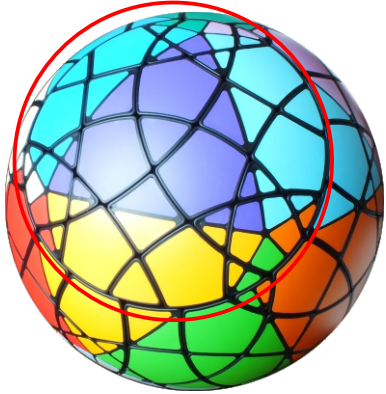
20x

Clean part surface
before applying stickers



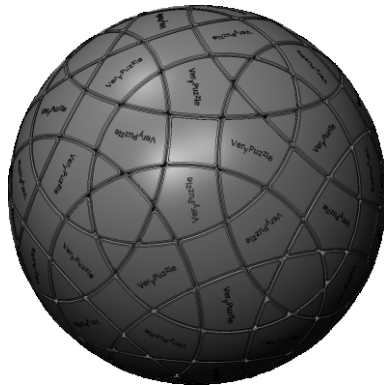
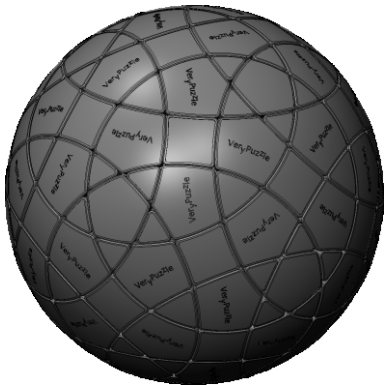
14

Rotation Rules



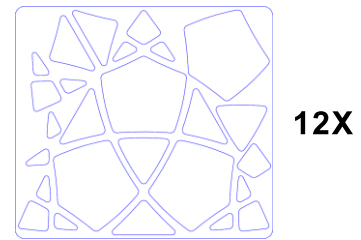
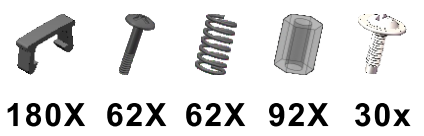
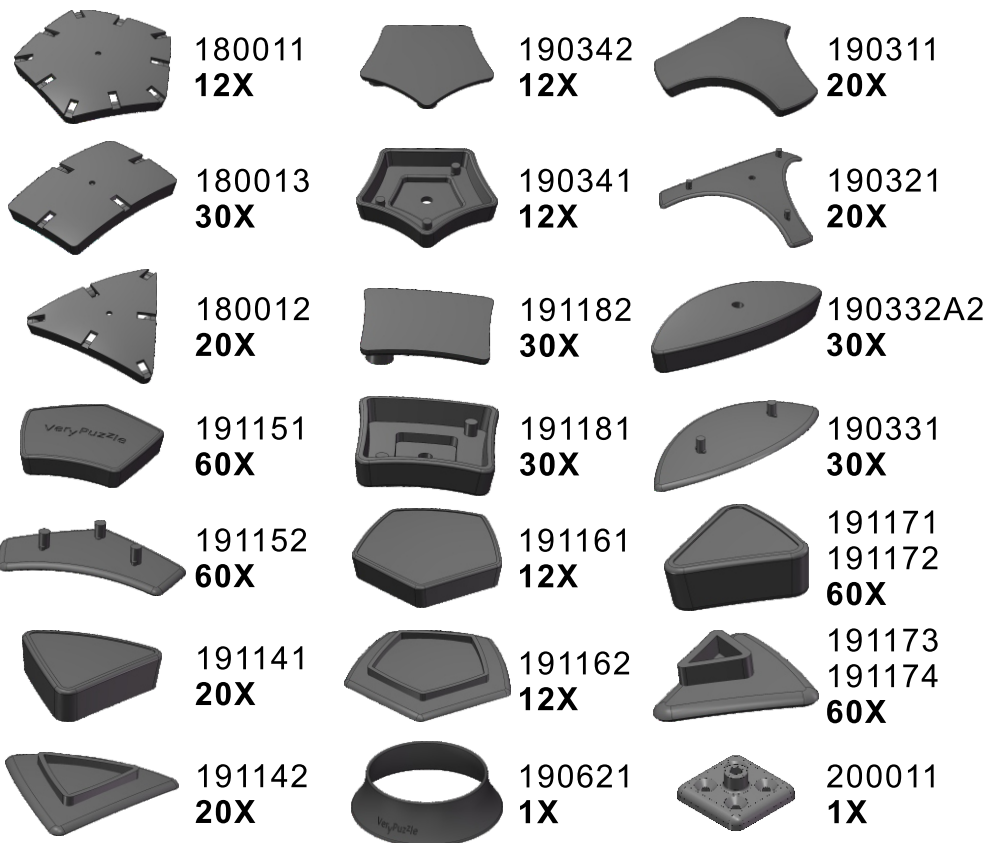
5-fold symmetry
Turns $72 \cdot n$ degrees

Notations and Algorithms



Product Information Card

Product Name	I9
Model NO.	#84
Design	VeryPuzzle Co., Ltd(HK)
Manufacturer	VeryPuzzle Co., Ltd(HK)
Year of release	2020
Maximum diameter	160 mm
Visible moving parts	182 pcs
Coloring strategy	Voronoi
Number of colors	20 colors
Sticker type	uniform matte
Sticker protection	Yes
Number of sticker pieces	320 pcs
Axis & Symmetry	$I(C(3) \times C(3))$
Maximum parts shared between two axes	6 parts
In-core spring	Yes
Adjustable tension	No
Technical Name	I9
Topological Print	I47
Core specification	DIRT130



Customer Service

1. support@verypuzzle.com

