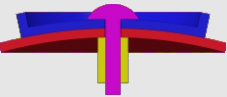
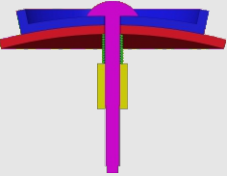
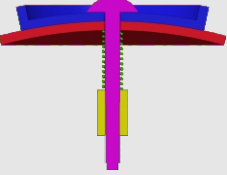
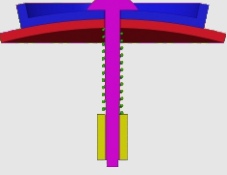


How to tighten the screws

Find your model in the table

Assembly section	Tightness	Models
	tight (no spring)	#61,#75
	tight (spring in green) (Short screw is recommended)	#72,#73,#77,#87,#88 #89
	medium (spring in green)	#94,#93,#90,#86,#85 #83,#82,#81,#80,#79 #78,#76,#71,#70,#69 #68,#67,#66,#65,#64 #63,#62,#60,#59
	loose (spring in green)	Mostly applicable to 'medium' category. Not recommended in general.

1. Tighter is usually better since the spring we provide is soft.
2. Early products had been using longer screws. You can either insert thick washer when necessary or request for short screws in the <Accessory & free parts> directory at our homepage:
<https://www.verypuzzle.com>

VeryPuzzle
2024/04

VeryPuzzle



Stingray
C1RD1-M3
#76

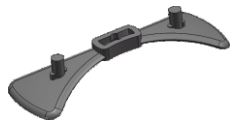
200+ parts
20 axes



1



190751
12X



190831
12X



12x



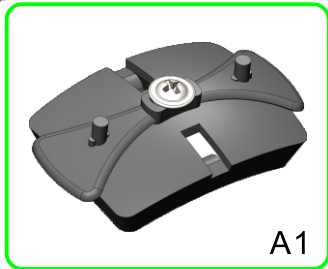
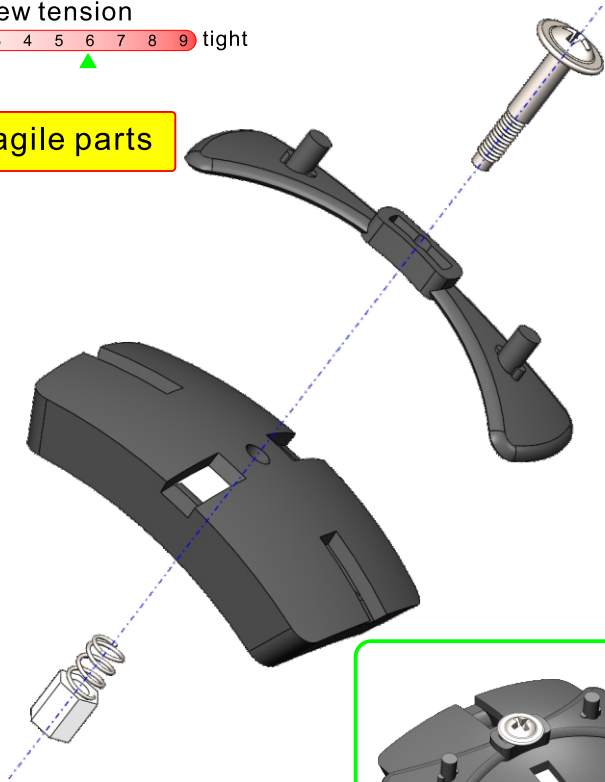
12x



12x

screw tension
no tension 0 1 2 3 4 5 6 7 8 9 tight

Beware of fragile parts



A1
20x

2



190761
8X



190861
8X



24x



8x

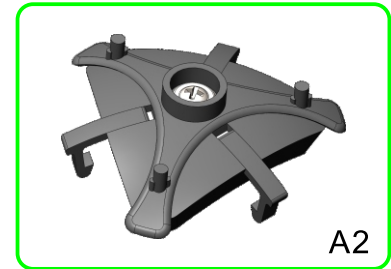
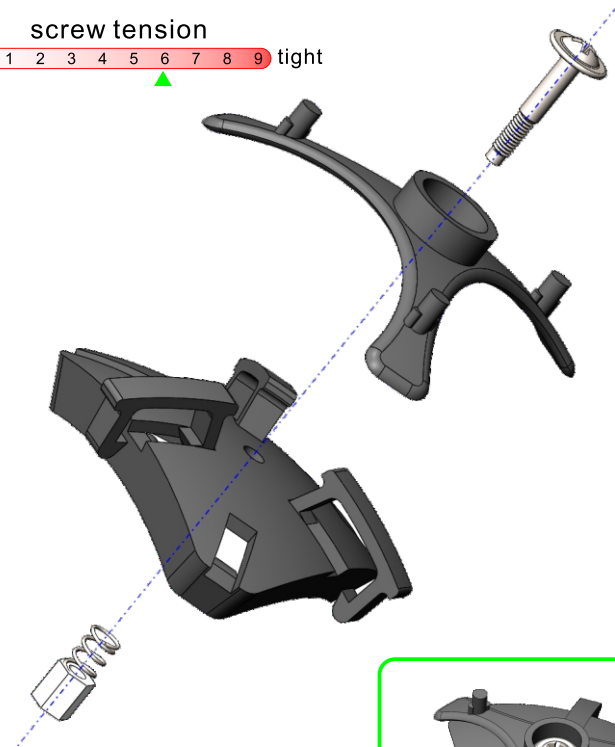


8x



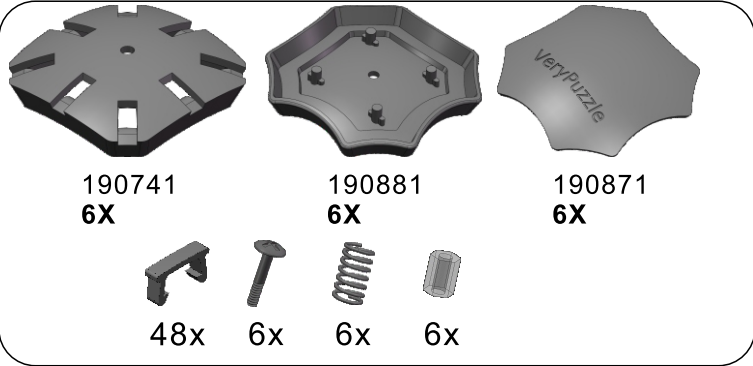
8x

screw tension
no tension 0 1 2 3 4 5 6 7 8 9 tight

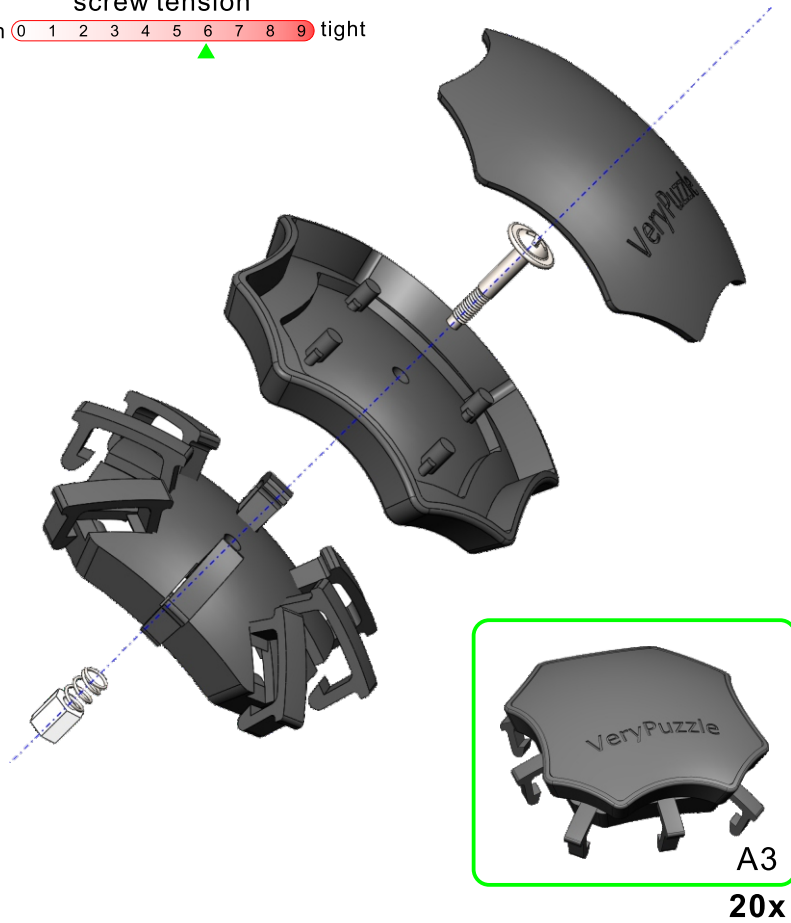


A2
12x

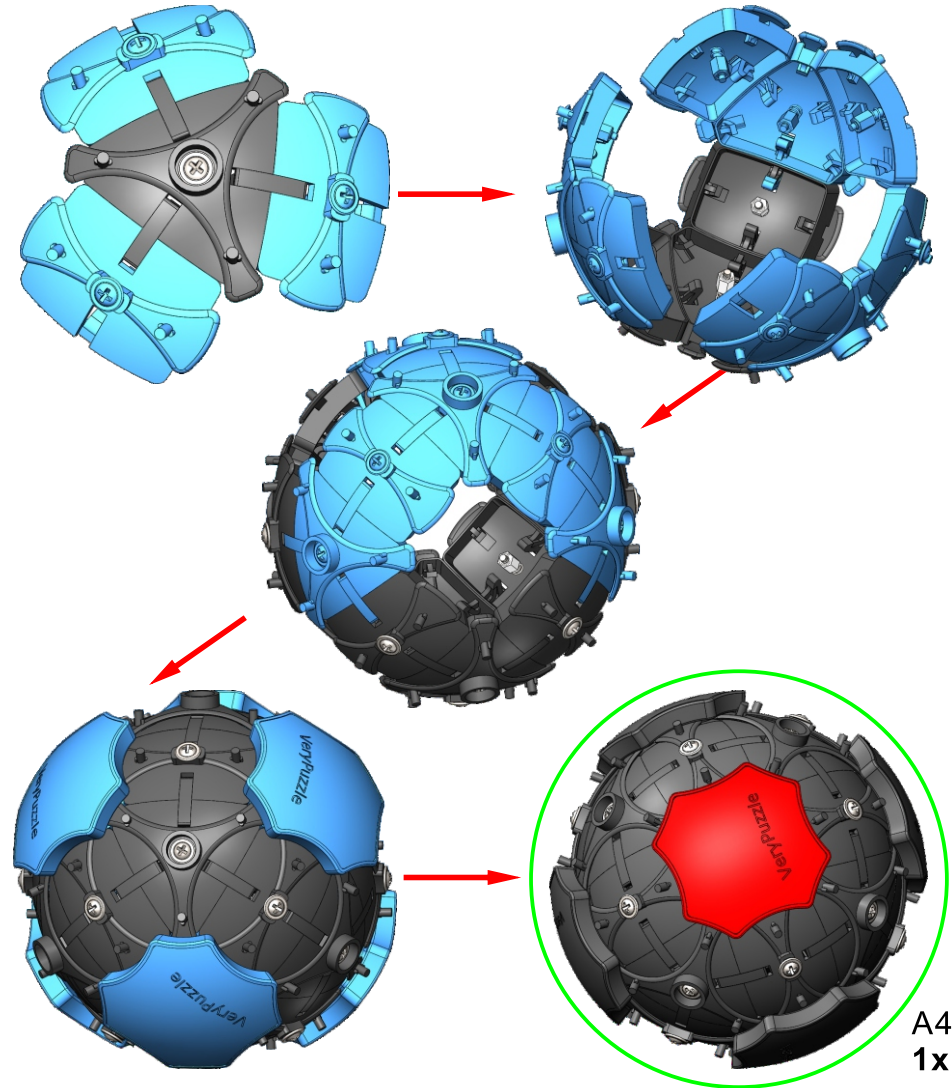
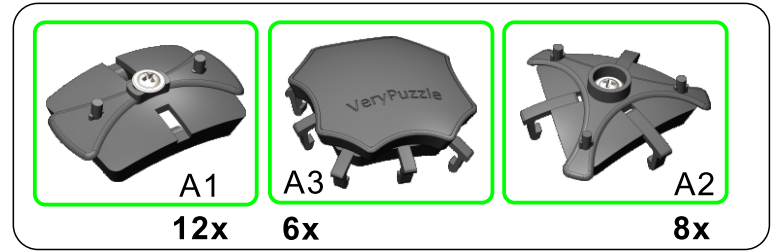
3



screw tension
no tension 0 1 2 3 4 5 6 7 8 9 tight



4



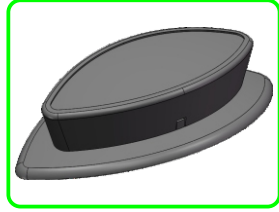
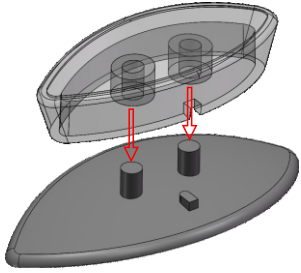
5



190842
24X

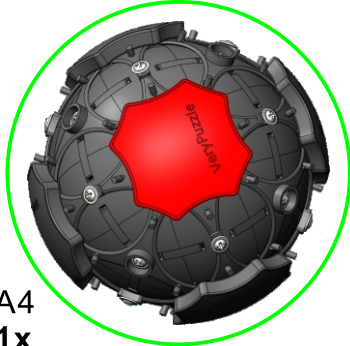


190841
24X

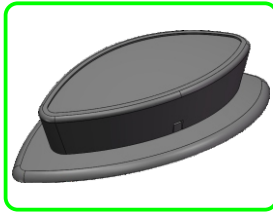


A5
24x

6



A4
1x



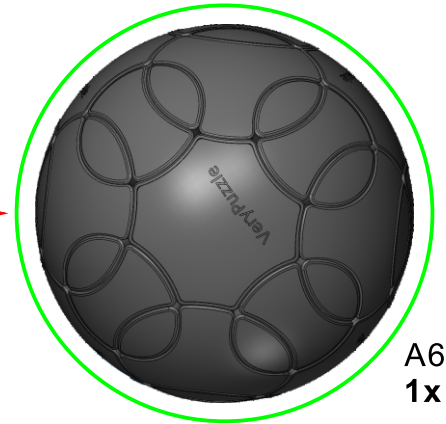
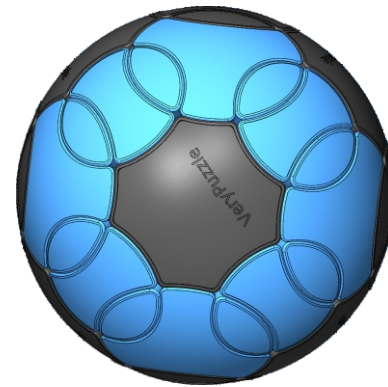
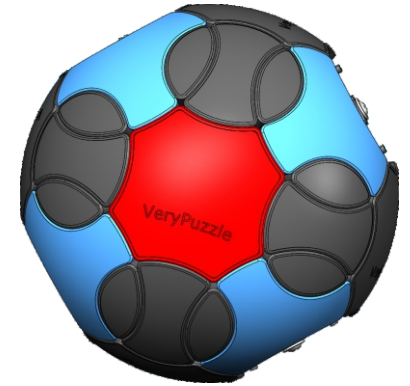
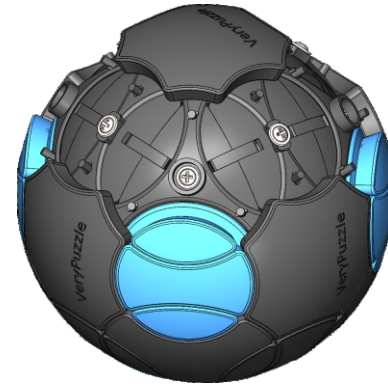
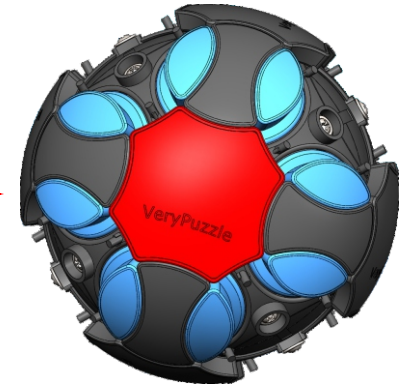
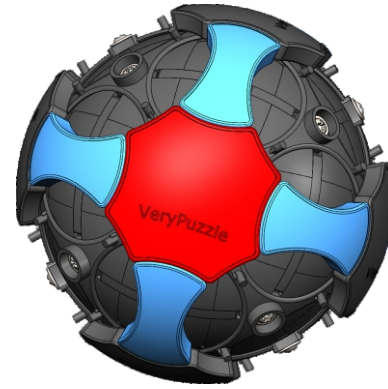
A5
24x



190832
12X

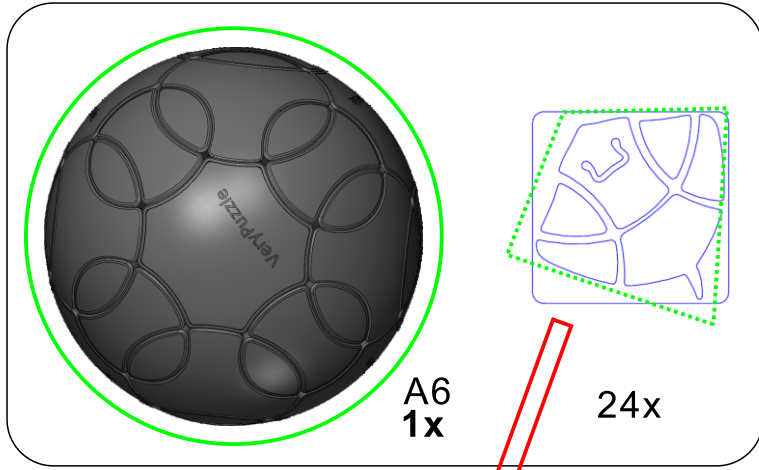


190851
8X



A6
1x

7



Clean part surface before applying stickers



8

Rotation Rules



3-fold symmetry
Turns $120 \cdot n$ degrees

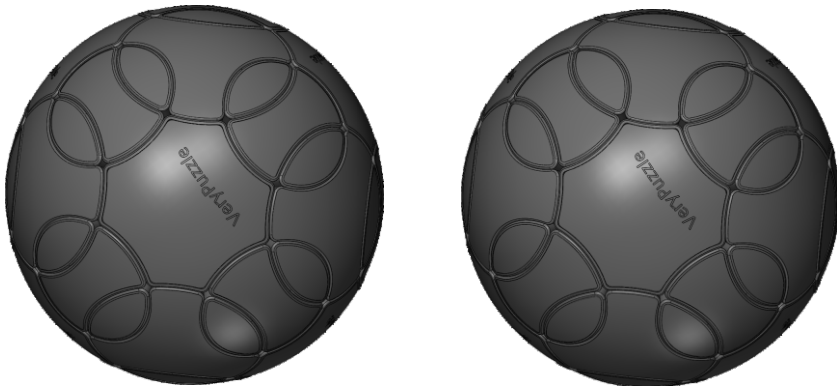
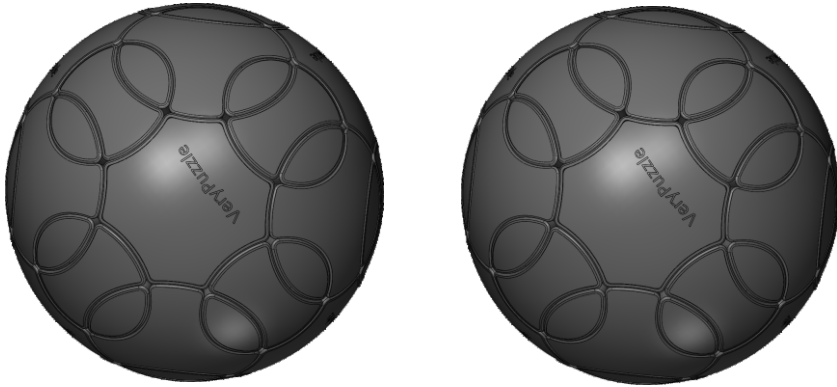


2-fold symmetry
Turns $180 \cdot n$ degrees

Notations and Algorithms



Notations and Algorithms



Product Information Card

Product Name	Stingray
Model NO.	#76
Design	VeryPuzzle Co., Ltd(HK)
Manufacturer	VeryPuzzle Co., Ltd(HK)
Year of release	2020
Maximum diameter	95 mm
Visible moving parts	50 pcs
Coloring strategy	Voronoi, artistic
Number of colors	24 colors
Sticker type	uniform, matte
Sticker protection	Yes
Number of sticker pieces	144 pcs
Axis & Symmetry	$O(C3)+RD(C2)$
Maximum parts shared between two axes	1 parts
In-core spring	Yes
Adjustable tension	No
Technical Name	C1RD1-M3
Topological Print	O28RD22
Core specification	CORD80



190741
6X



190832
12X



190851
8X



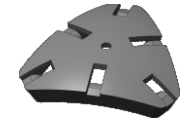
190751
12X



190831
12X



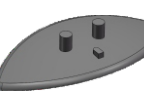
190861
8X



190761
8X



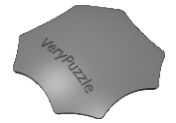
190842
24X



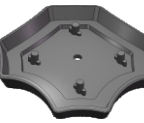
190841
24X



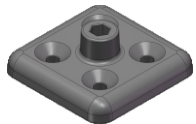
190621
1X



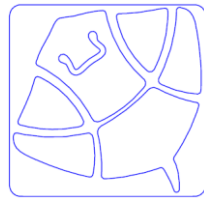
190871
6X



190881
6X



200011
1X



12X



72X 26X 26X 26X

Customer Service

1. support@verypuzzle.com



2. **VeryPuzzle**