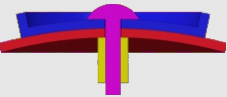
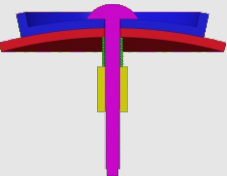
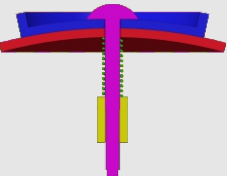
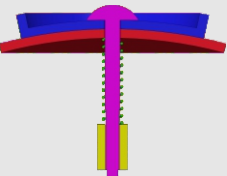


How to tighten the screws

Find your model in the table

Assembly section	Tightness	Models
	tight (no spring)	#61,#75
	tight (spring in green) (Short screw is recommended)	#72,#73,#77,#87,#88 #89
	medium (spring in green)	#94,#93,#90,#86,#85 #83,#82,#81,#80,#79 #78,#76,#71,#70,#69 #68,#67,#66,#65,#64 #63,#62,#60,#59
	loose (spring in green)	Mostly applicable to 'medium' category. Not recommended in general.

1. Tighter is usually better since the spring we provide is soft.
2. Early products had been using longer screws. You can either insert thick washer when necessary or request for short screws in the <Accessory & free parts> directory at our homepage:
<https://www.verypuzzle.com>

VeryPuzzle
2024/04

VeryPuzzle



Icosahedron 77

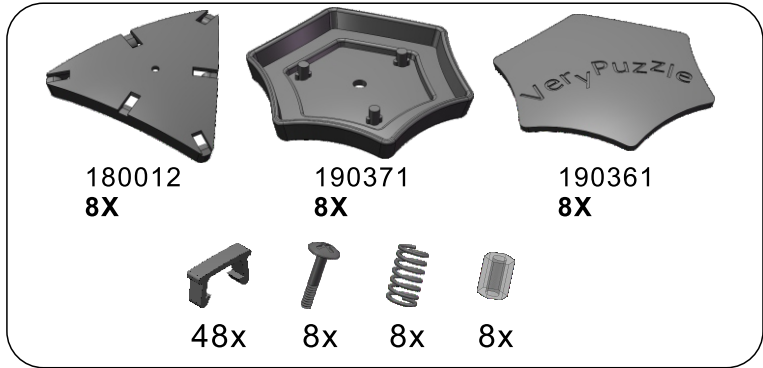
I3-C1

#68

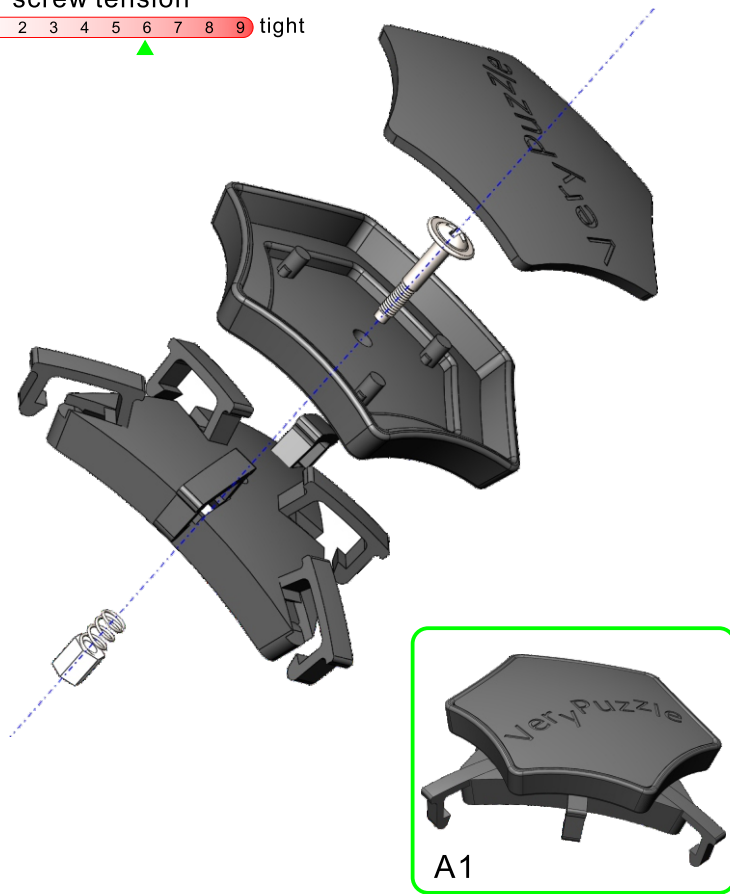
700+ parts
20 axes



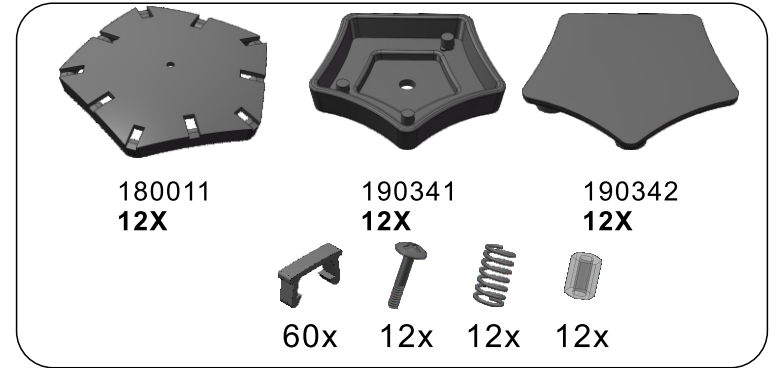
1



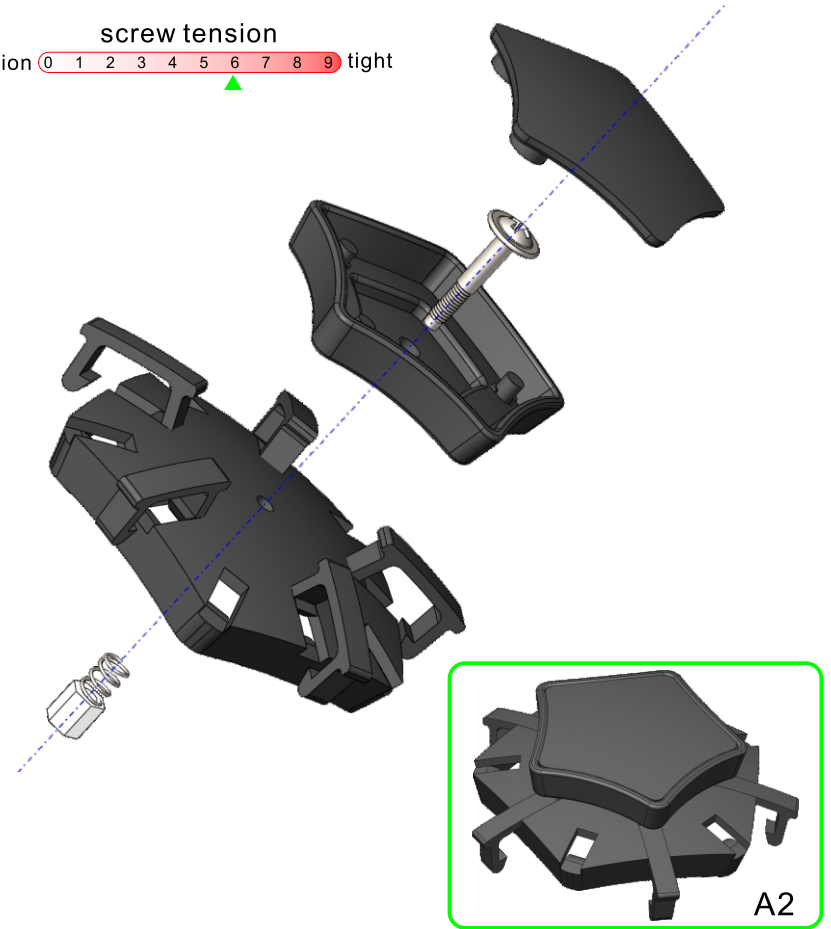
screw tension
no tension 0 1 2 3 4 5 6 7 8 9 tight



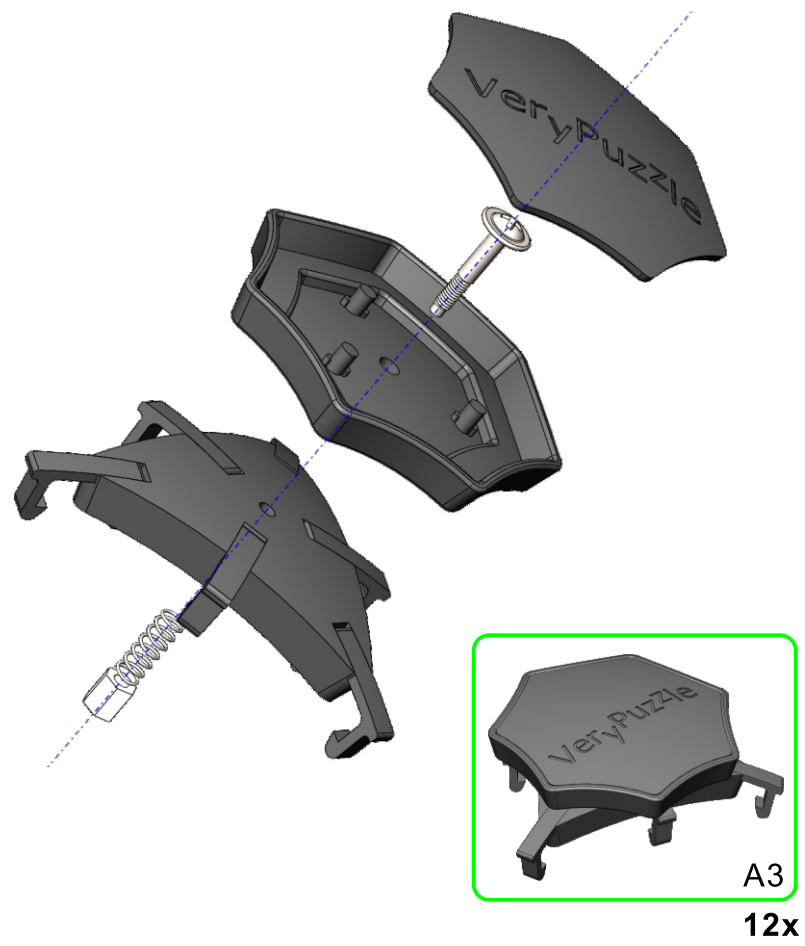
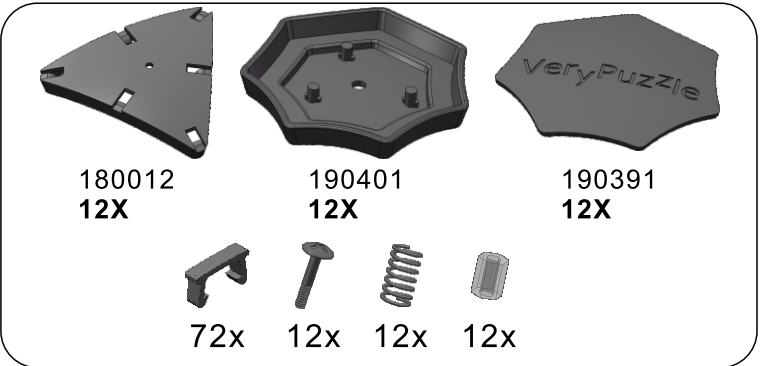
2



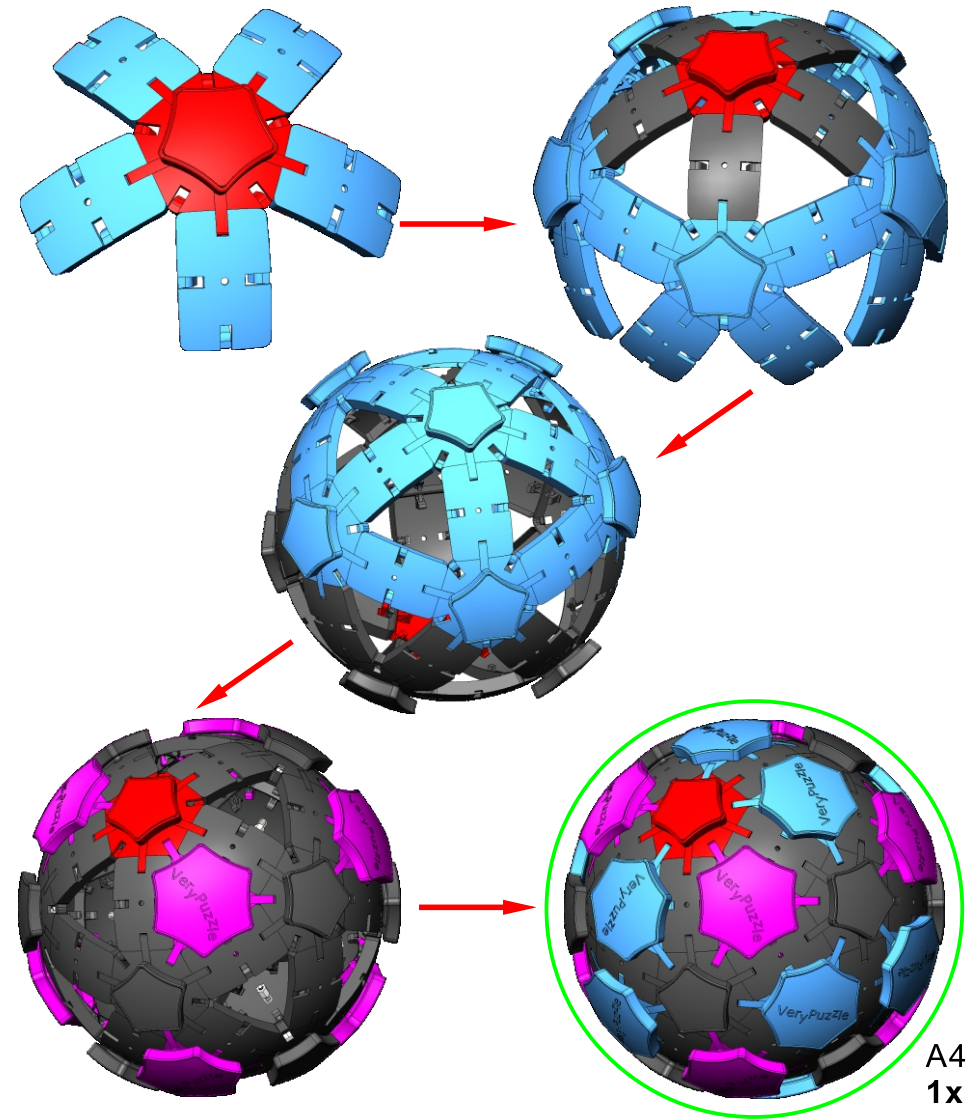
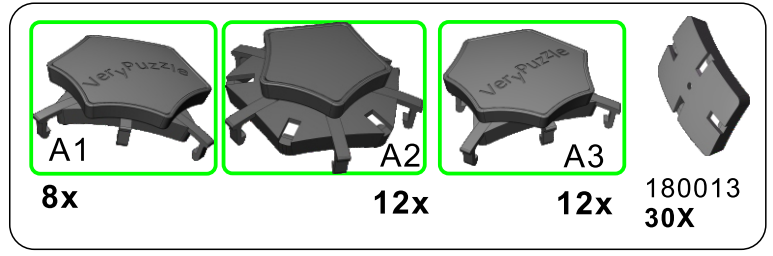
screw tension
no tension 0 1 2 3 4 5 6 7 8 9 tight



3



4



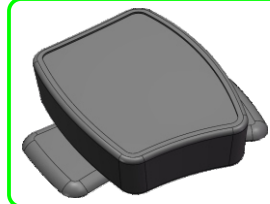
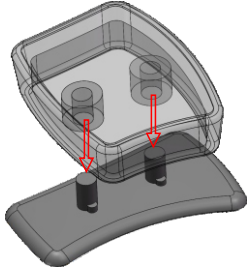
5



190351
24X



190353
24X

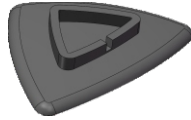


A5
24x

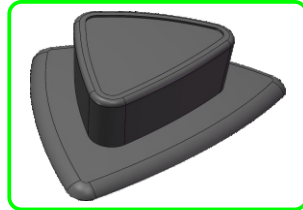
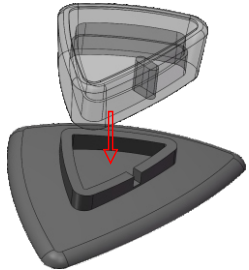
6



190384
72X

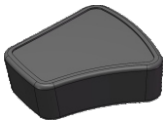


190381
72X



A6
72x

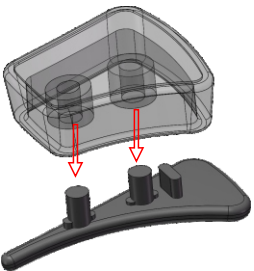
7



190382
78X

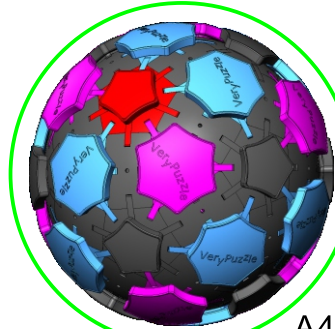


190383
78X

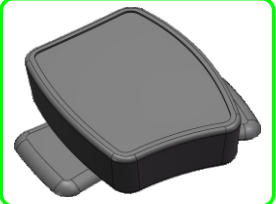


A7
78x

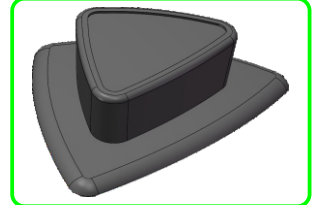
8



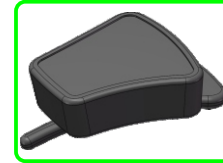
A4
1x



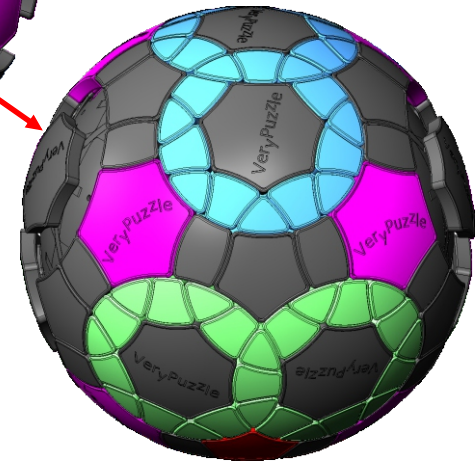
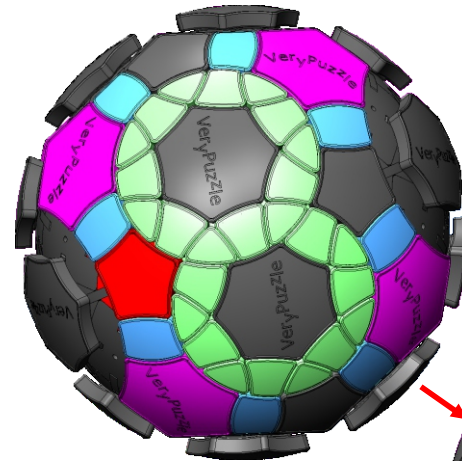
A5
24x



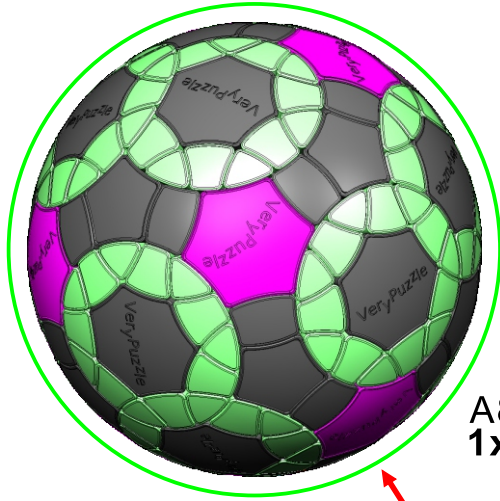
A6
72x



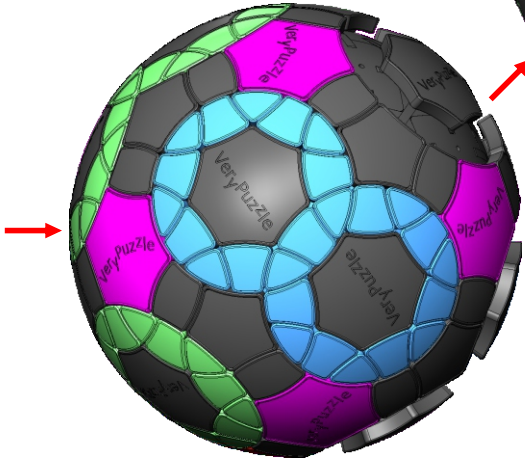
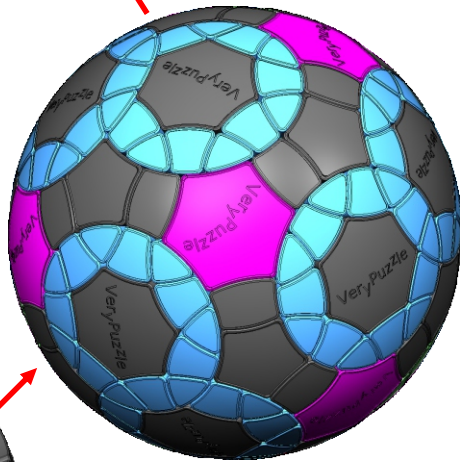
A7
78x



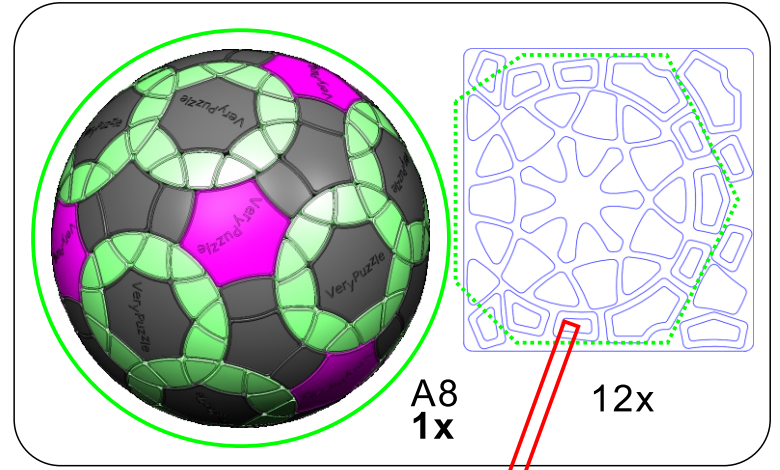
8



A8
1x



9



A8
1x

12x

Clean part surface
before applying stickers



10

Rotation Rules

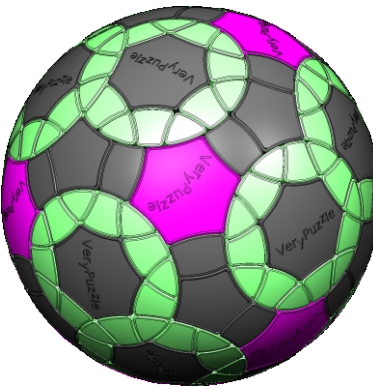
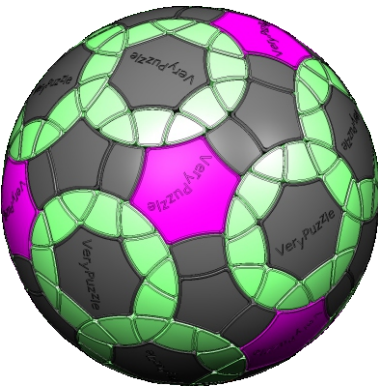


7-fold symmetry
Turns $51.4 \cdot n$ degrees



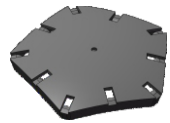
3-fold symmetry
Turns $120 \cdot n$ degrees

Notations and Algorithms

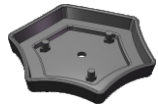


Product Information Card

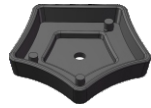
Product Name	Icosahedron 77
Model NO.	#68
Design	VeryPuzzle Co., Ltd(HK)
Manufacturer	VeryPuzzle Co., Ltd(HK)
Year of release	2019
Maximum diameter	145 mm
Visible moving parts	202 pcs
Coloring strategy	Voronoi variation
Number of colors	12 colors
Sticker type	uniform matt
Sticker protection	Yes
Number of sticker pieces	270 pcs
Axis & Symmetry	$I \cap O(C7) + I \cap O(C3)$
Maximum parts shared between two axes	3 parts
In-core spring	Yes
Adjustable tension	No
Technical Name	I3-C1
Topological Print	D24I27
Core specification	DIRT130



180011
12X



190371
8X



190341
12X



180013
30X



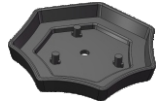
190361
8X



190342
12X



180012
20X



190401
12X



190384
72X



190351
24X



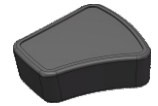
190391
12X



190381
72X



190353
24X



190382
78X



190383
78X



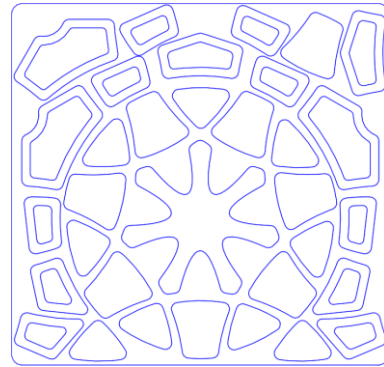
190621
1X



200011
1X



180X 32X 32X 32X



12X

Customer Service

1. support@verypuzzle.com



2. **VeryPuzzle**