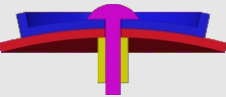
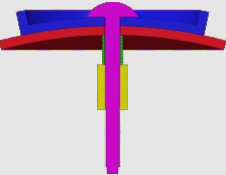
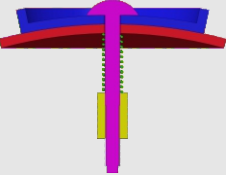
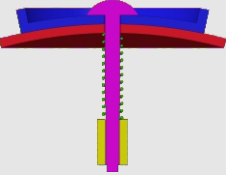


How to tighten the screws

Find your model in the table

Assembly section	Tightness	Models
	tight (no spring)	#61, #74, #75
	tight (spring in green) (Short screw is recommended)	#72, #73, #77, #87, #88 #89
	medium (spring in green)	#94, #93, #90, #86, #85 #83, #82, #81, #80, #79 #78, #76, #71, #70, #69 #68, #67, #66, #65, #64 #63, #62, #60, #59
	loose (spring in green)	Mostly applicable to 'medium' category. Not recommended in general.

1. Tighter is usually better since the spring we provide is soft.
2. Early products had been using longer screws. You can either insert thick washer when necessary or request for short screws in the <Accessory & free parts> directory at our homepage: <https://www.verypuzzle.com>

VeryPuzzle
2024/04

VeryPuzzle

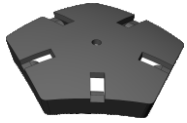


Gigaminx Ball V1.0
D5-L2
#74

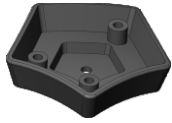
600+ parts
12 axes



1



180061
12X



190572
12X



190571
12X



12x

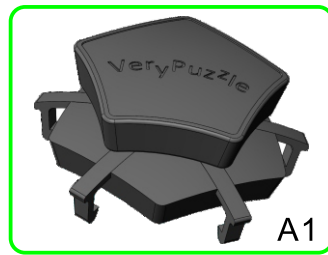
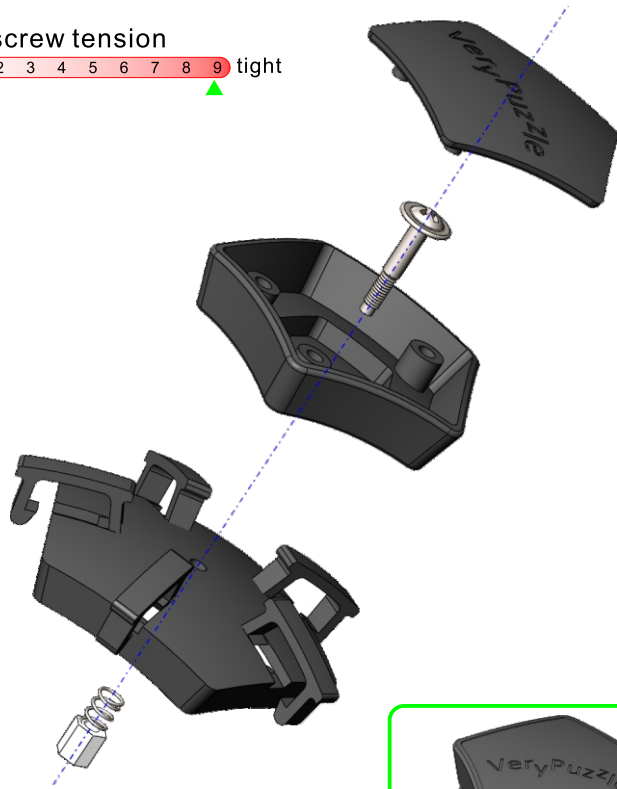


12x



12x

screw tension
no tension 0 1 2 3 4 5 6 7 8 9 tight

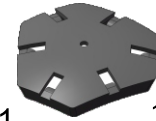


A1
12x

2



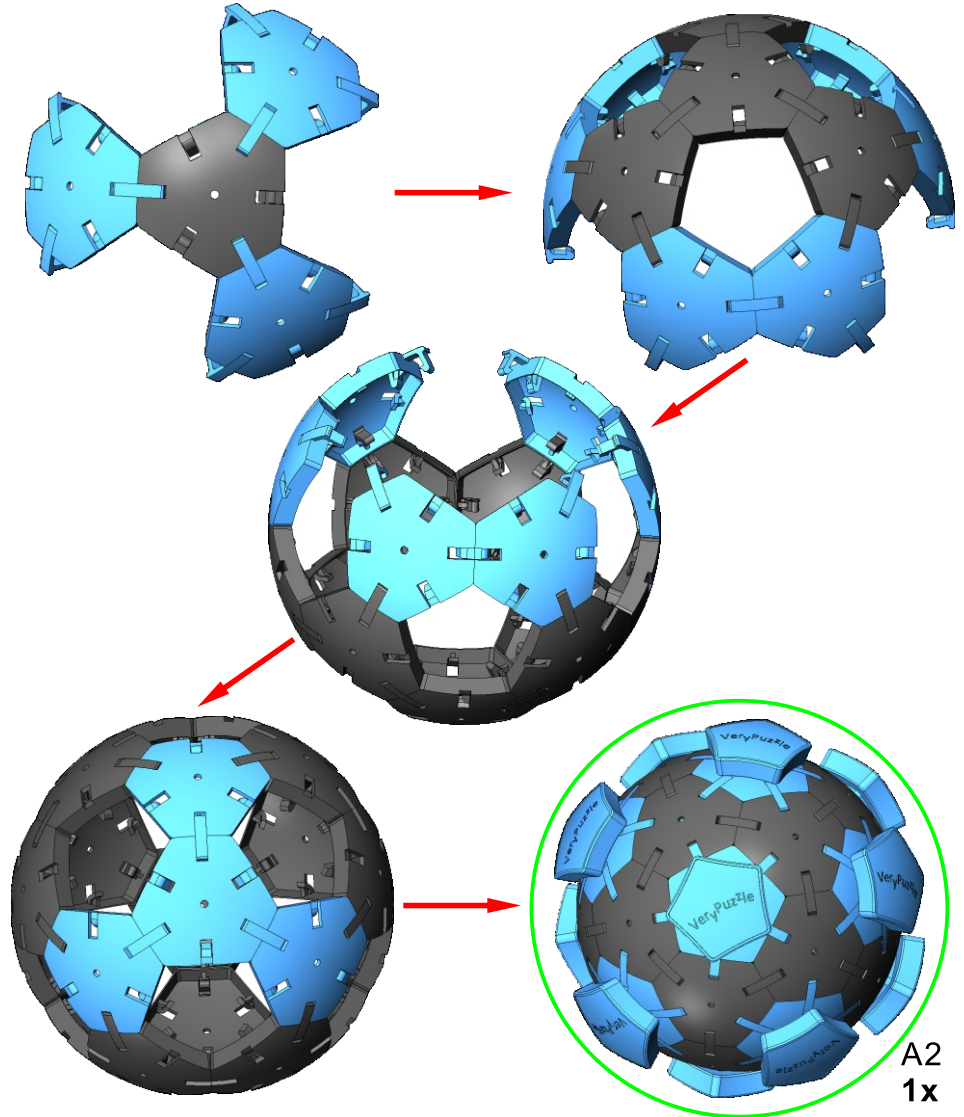
A1
12x



180062
20X



60x



A2
1x

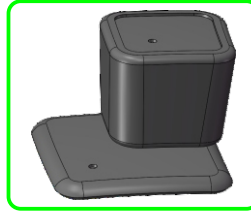
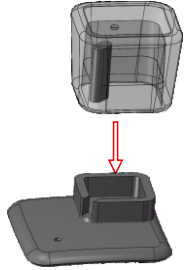
3



190612
60X

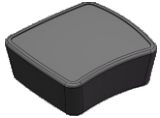


190613
60X



A3
60x

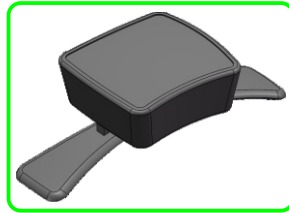
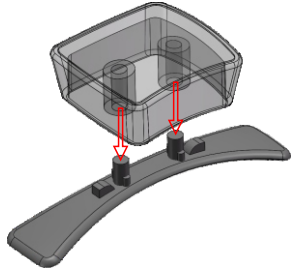
4



190582
30X



190581
30X



A4
30x

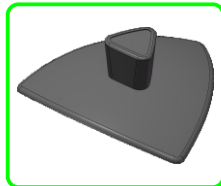
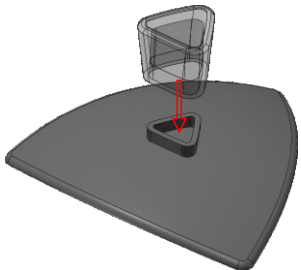
5



190582
20X



190591
20X



A5
20x

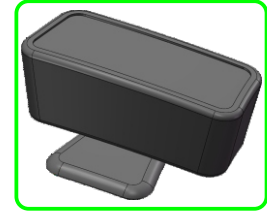
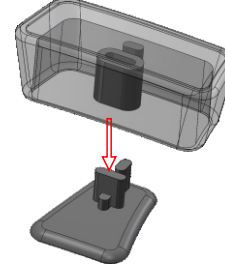
6



190611
60X



190614
60X

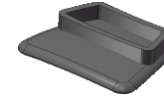


A6
60x

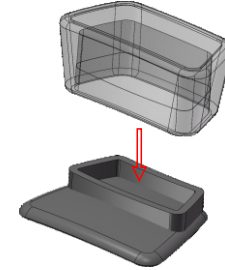
7



190601
160602
60X

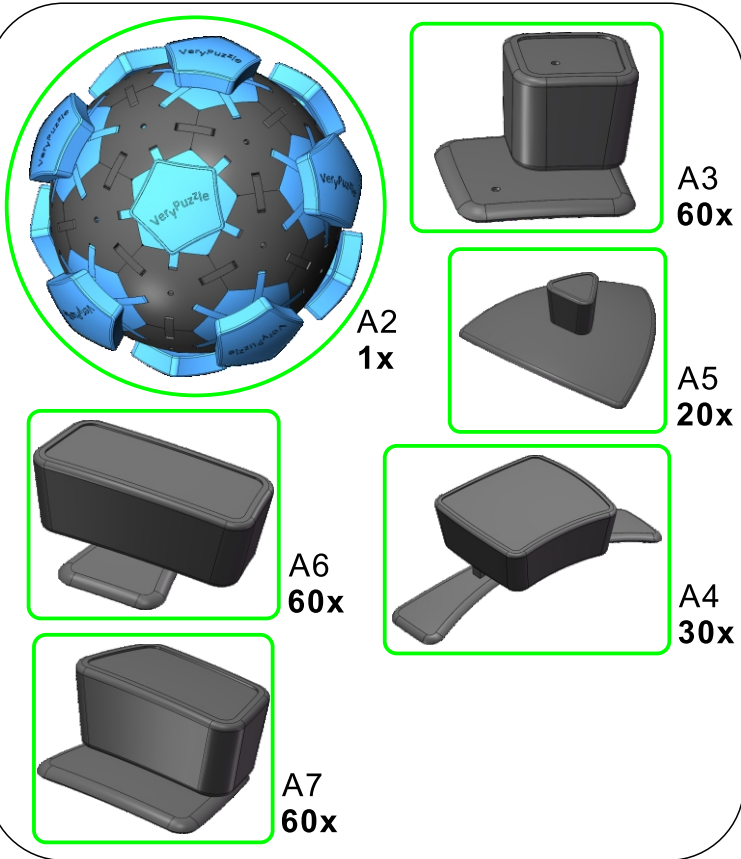


190603
190604
60X

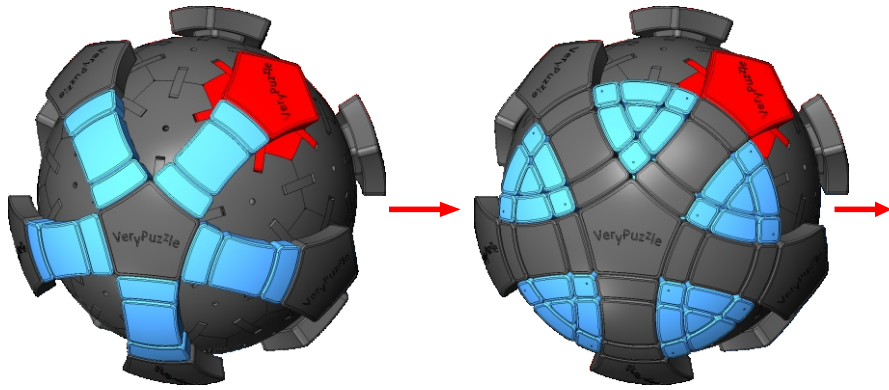
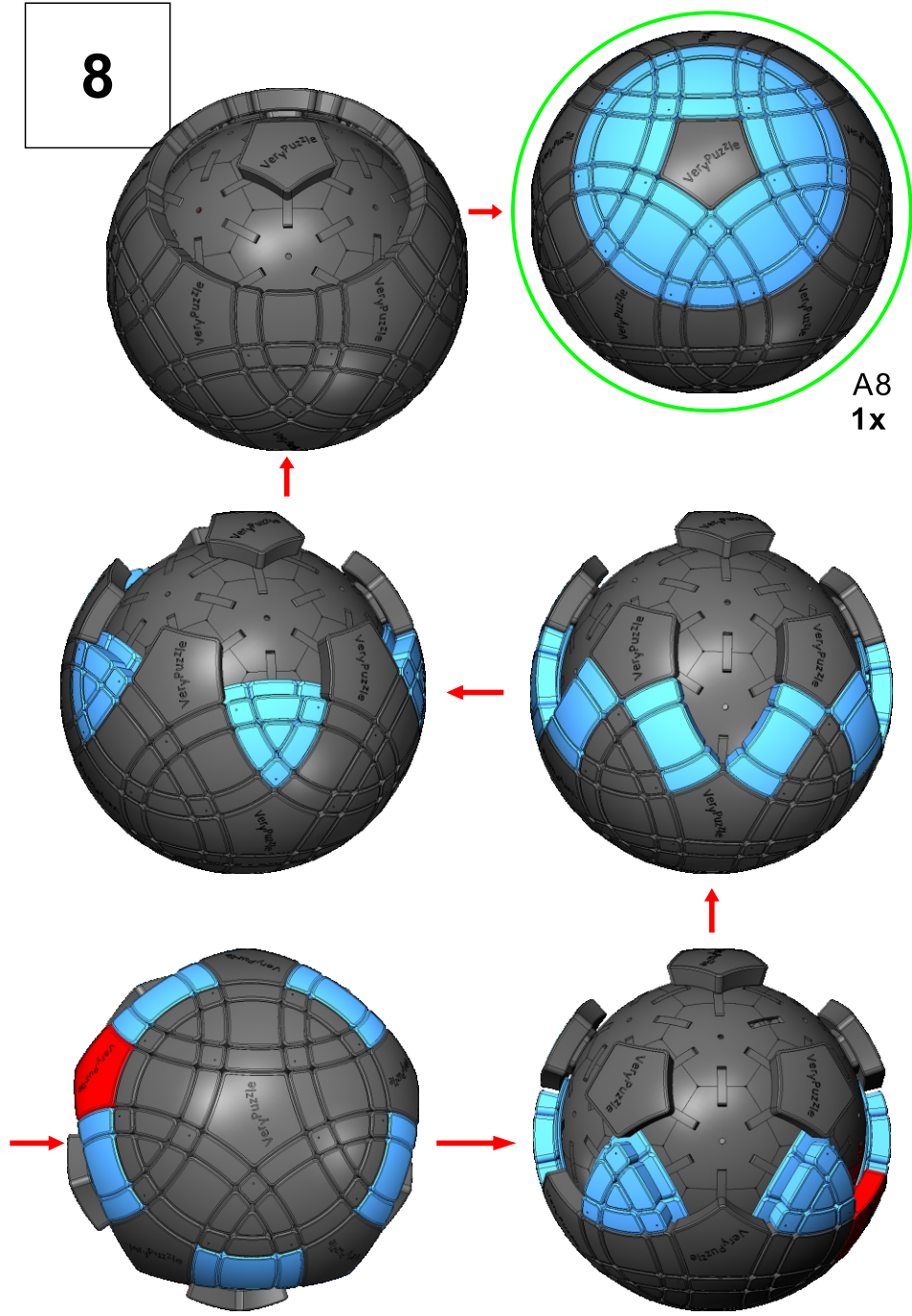


A7
60x

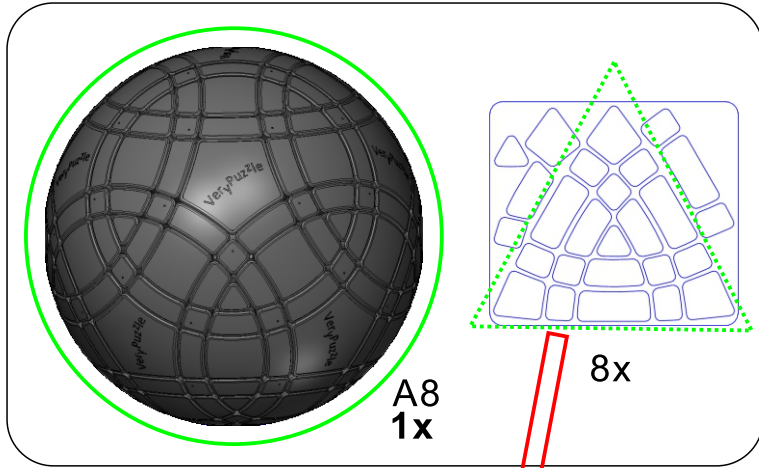
8



8



9

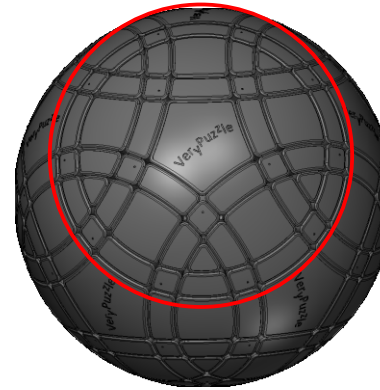


Clean part surface before applying stickers



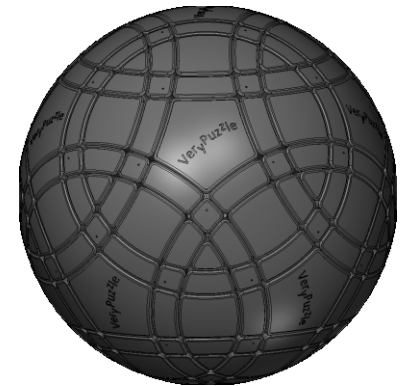
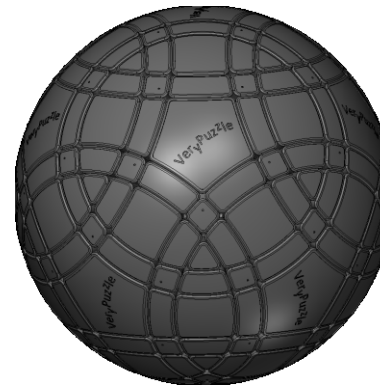
10

Rotation Rules

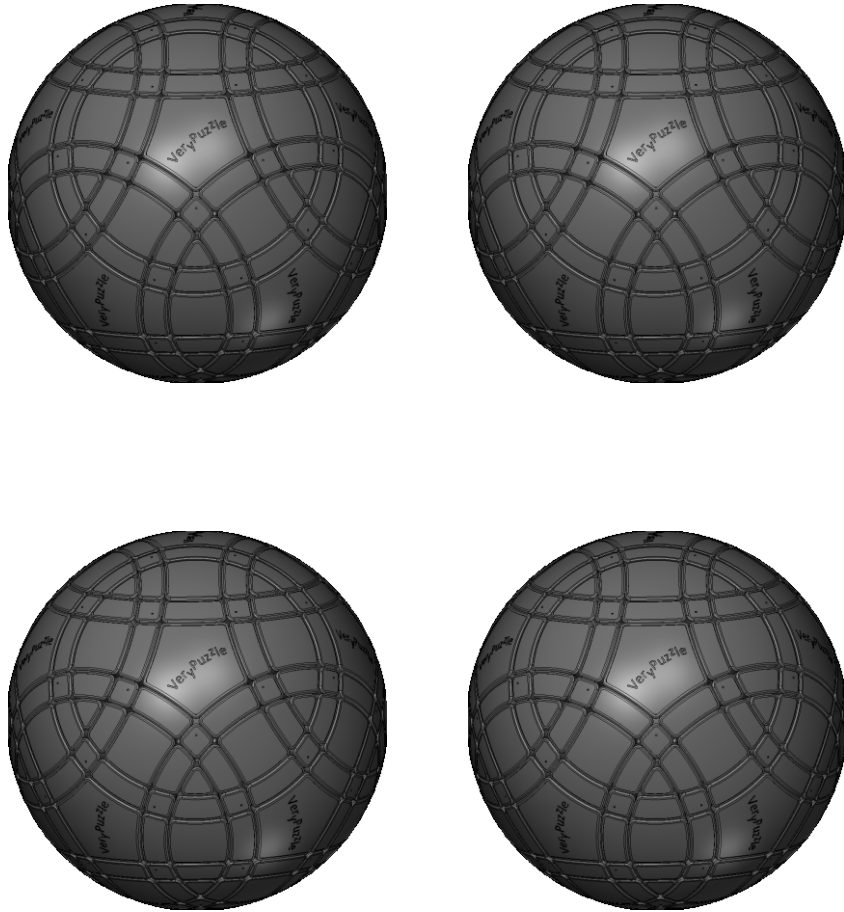


5-fold symmetry
Turns $72 \cdot n$ degrees

Notations and Algorithms

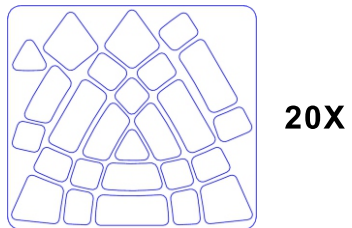
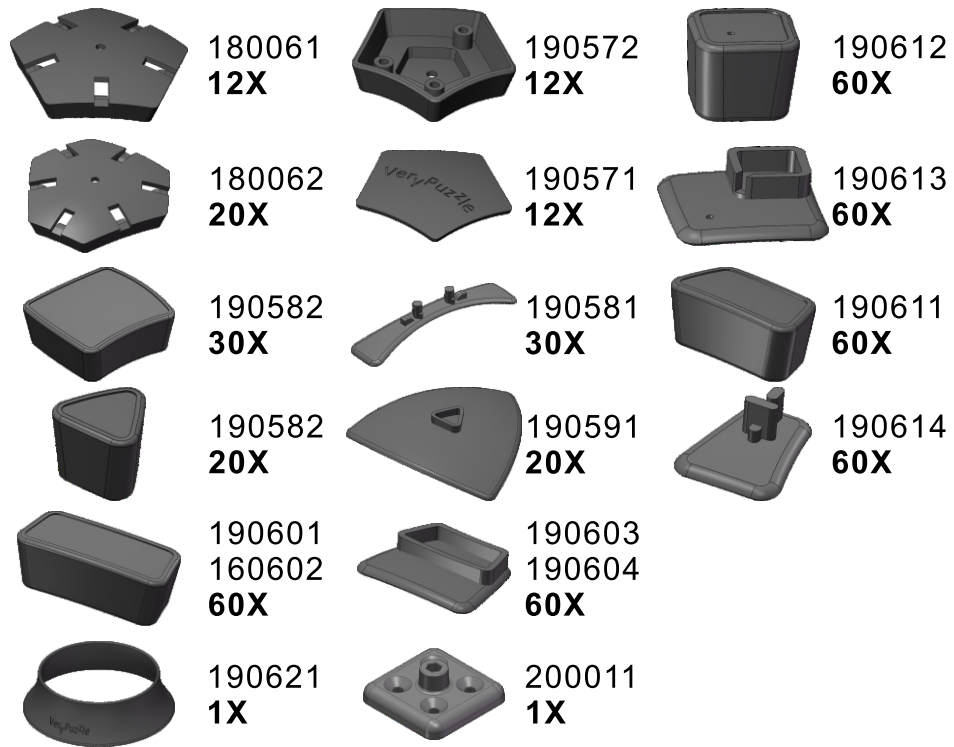


Notations and Algorithms



Product Information Card

Product Name	Gigaminx Ball V1.0
Model NO.	#74
Design	VeryPuzzle Co., Ltd(HK)
Manufacturer	VeryPuzzle Co., Ltd(HK)
Year of release	2021
Maximum diameter	120 mm
Visible moving parts	242 pcs
Coloring strategy	Delauney triangulation
Number of colors	20 colors
Sticker type	uniform, matte
Sticker protection	Yes
Number of sticker pieces	200 pcs
Axis & Symmetry	D(C5)
Maximum parts shared between two axes	17 parts
In-core spring	Yes
Adjustable tension	No
Technical Name	D5-L2
Topological Print	D{41, 50}
Core specification	DI100



Customer Service

1. support@verypuzzle.com



VeryPuzzle