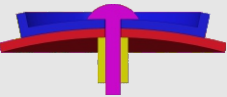
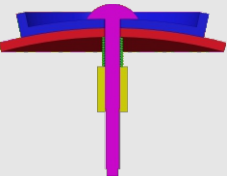
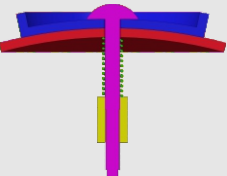
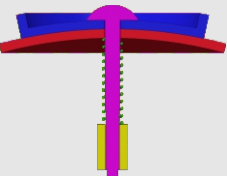


How to tighten the screws

Find your model in the table

Assembly section	Tightness	Models
	tight (no spring)	#61,#75
	tight (spring in green) (Short screw is recommended)	#72,#73,#77,#87,#88 #89
	medium (spring in green)	#94,#93,#90,#86,#85 #83,#82,#81,#80,#79 #78,#76,#71,#70,#69 #68,#67,#66,#65,#64 #63,#62,#60,#59
	loose (spring in green)	Mostly applicable to 'medium' category. Not recommended in general.

1. Tighter is usually better since the spring we provide is soft.
2. Early products had been using longer screws. You can either insert thick washer when necessary or request for short screws in the <Accessory & free parts> directory at our homepage:
<https://www.verypuzzle.com>

VeryPuzzle
2024/04

VeryPuzzle

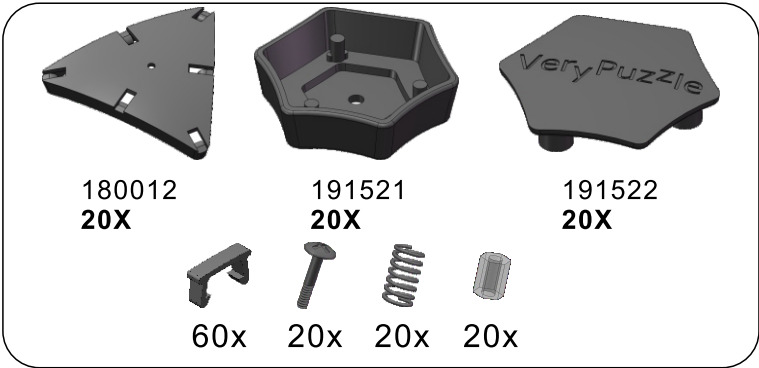


Tuttminx F2
D113-M5-F2
#89

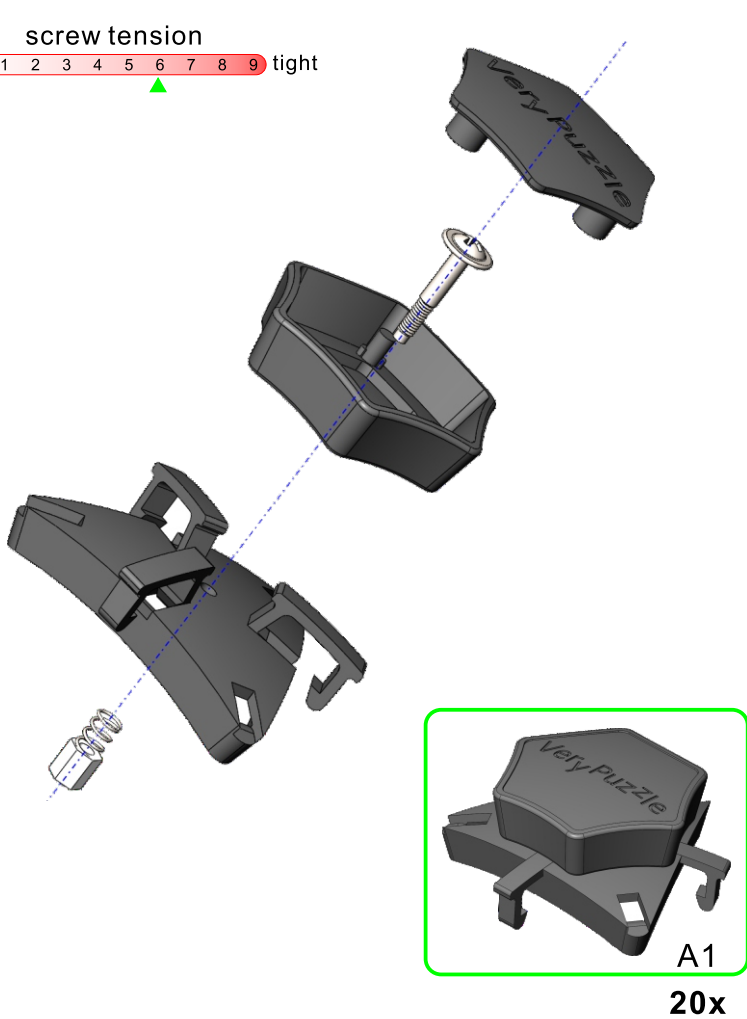
1000+ parts
32 axes



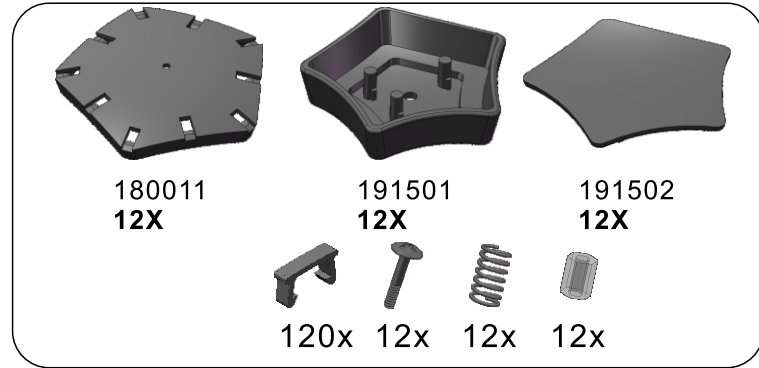
1



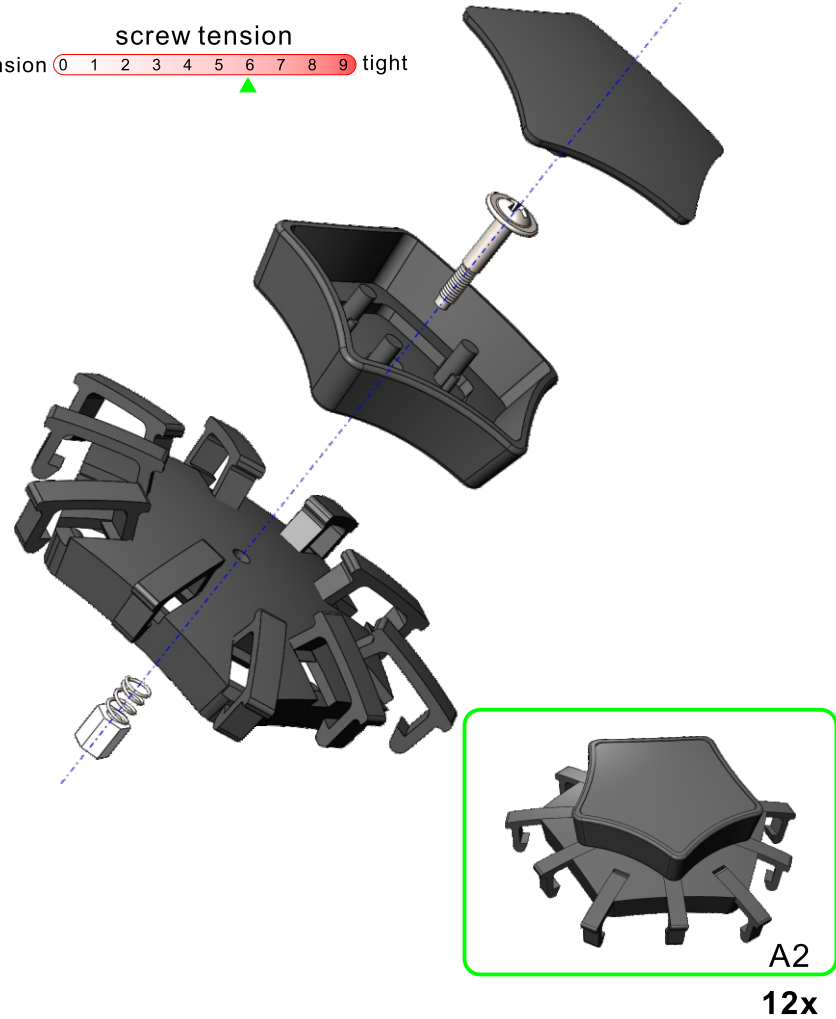
screw tension
no tension 0 1 2 3 4 5 6 7 8 9 tight



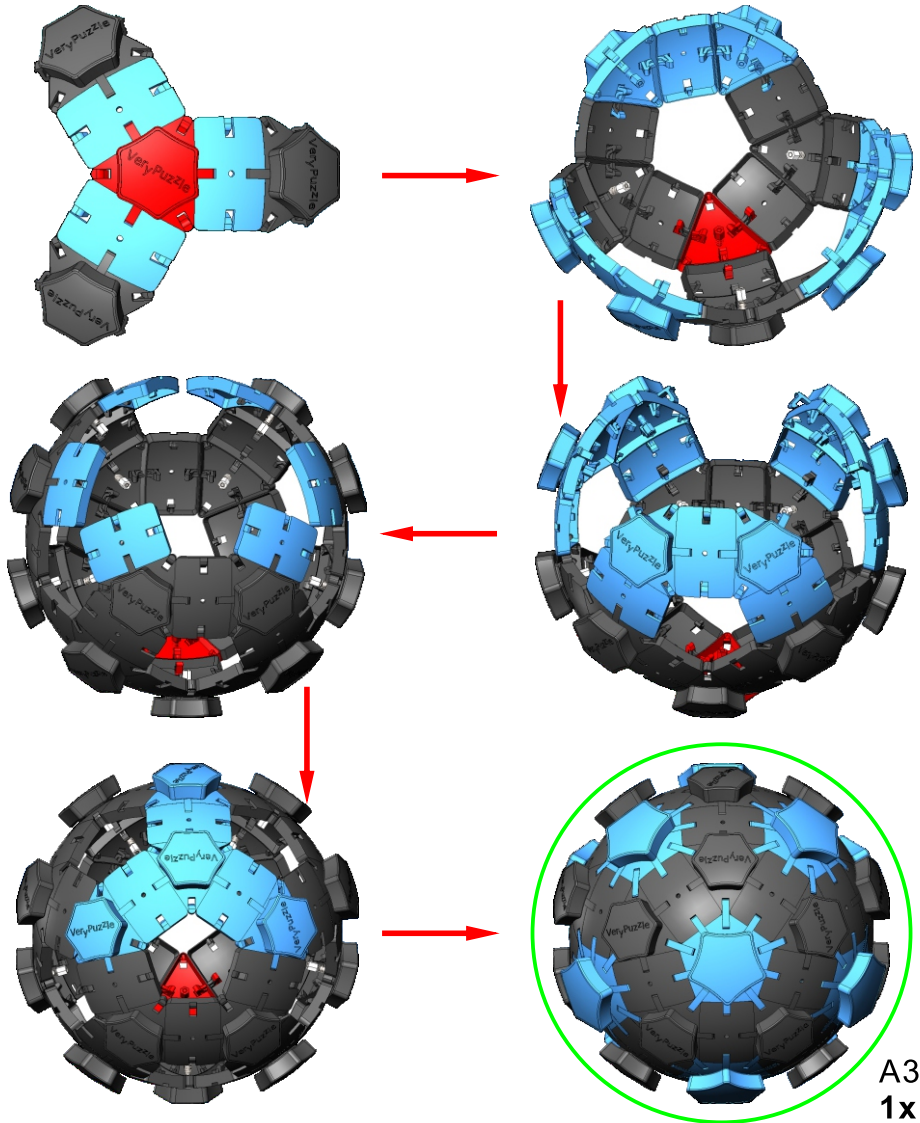
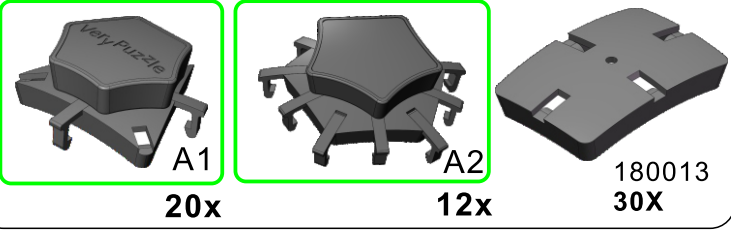
2



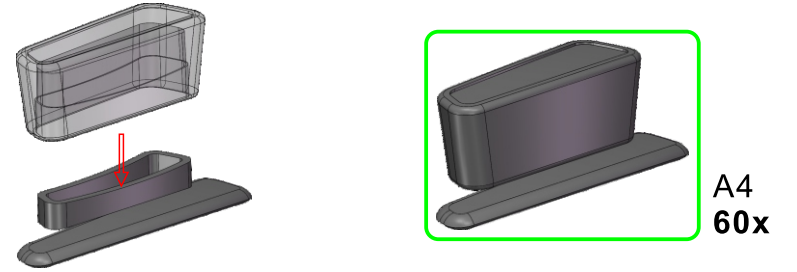
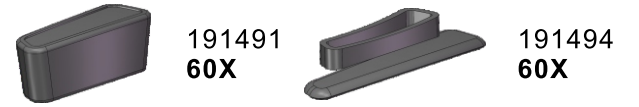
screw tension
no tension 0 1 2 3 4 5 6 7 8 9 tight



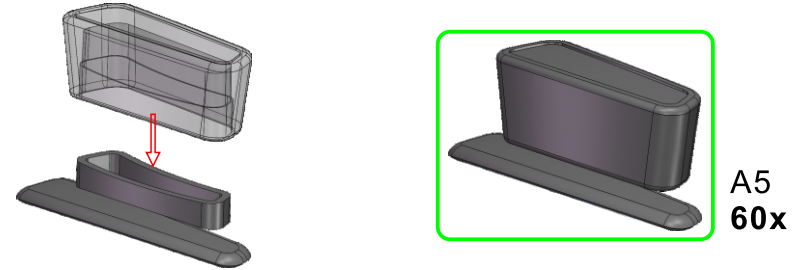
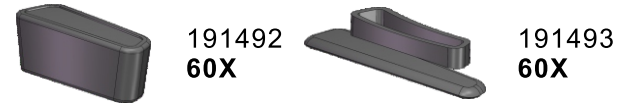
3



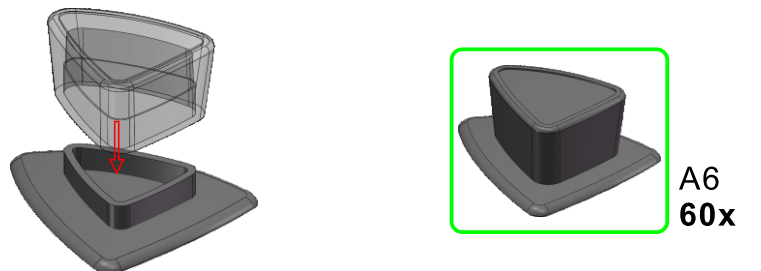
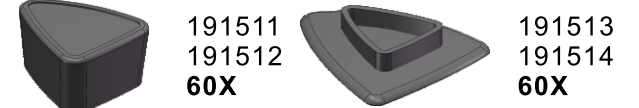
4



5



6

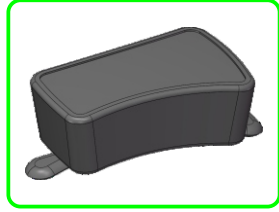
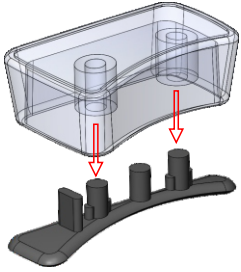


7

191481
191482
60X



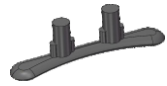
191483
191484
60X



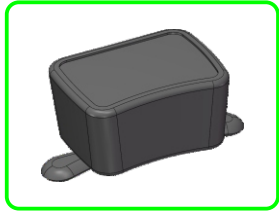
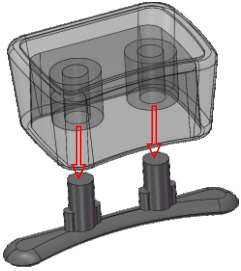
A7
60x

8

191461
191462
30X



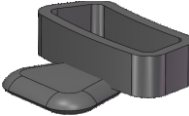
191463
191464
30X



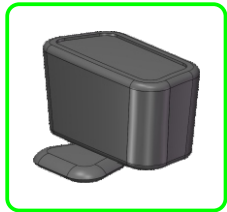
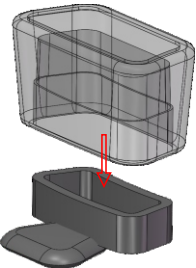
A8
30x

9

191471
191472
60X



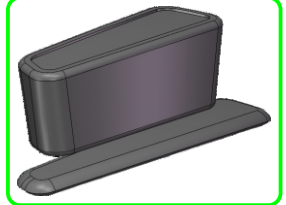
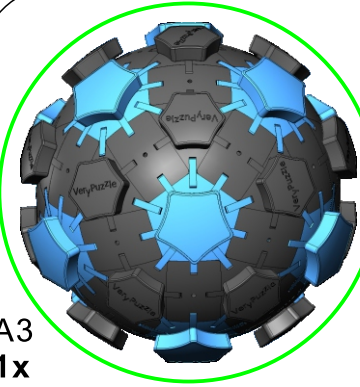
191473
191474
60X



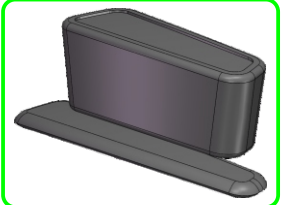
A9
60x

10

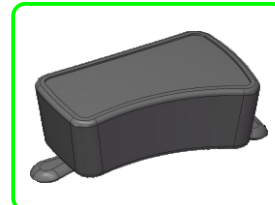
A3
1x



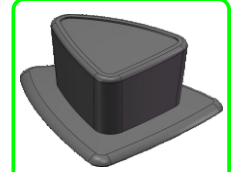
A4
60x



A5
60x



A7
60x



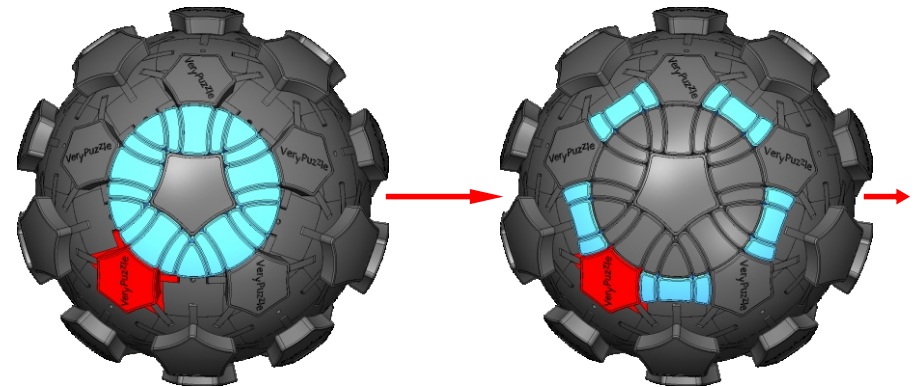
A6
60x



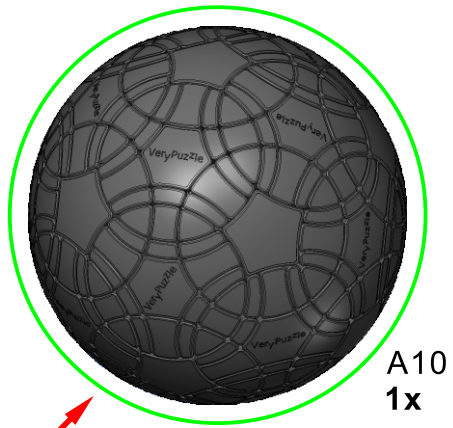
A8
30x



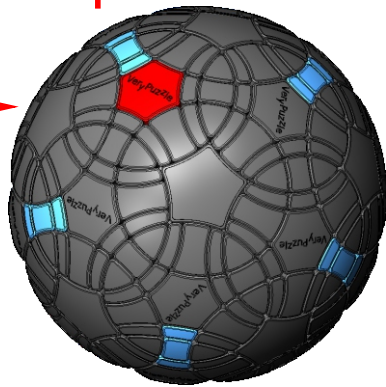
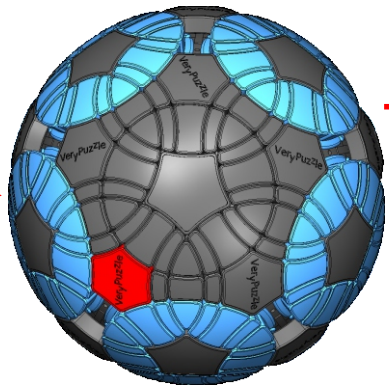
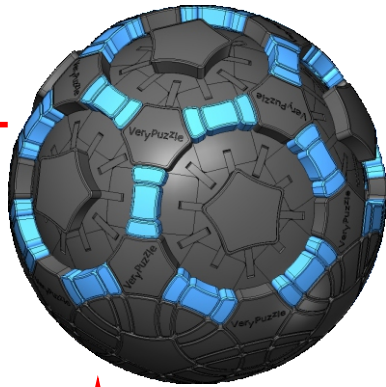
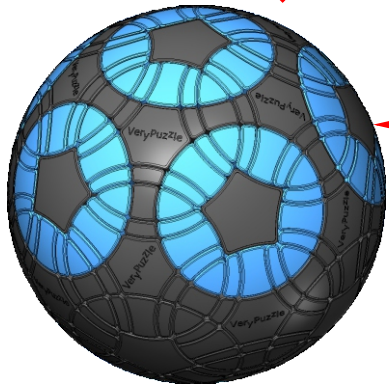
A9
60x



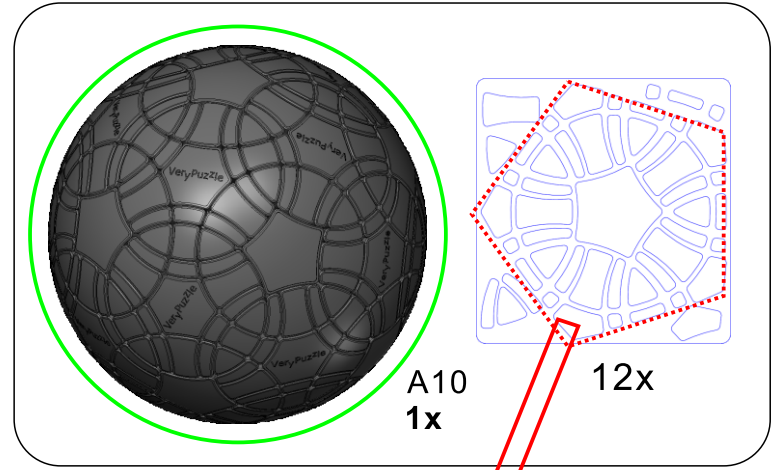
10



A10
1x



11



A10
1x

12x

Clean part surface
before applying stickers



12

Rotation Rules

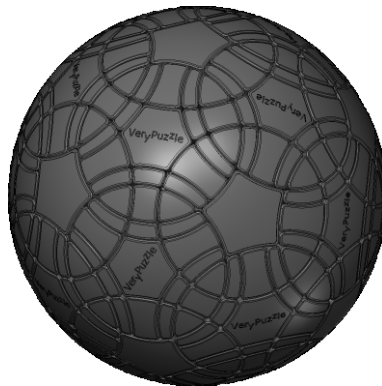
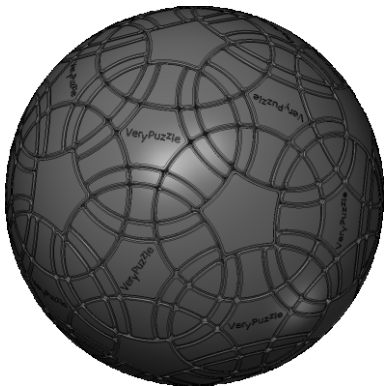


6-fold symmetry
Turns $60 \cdot n$ degrees



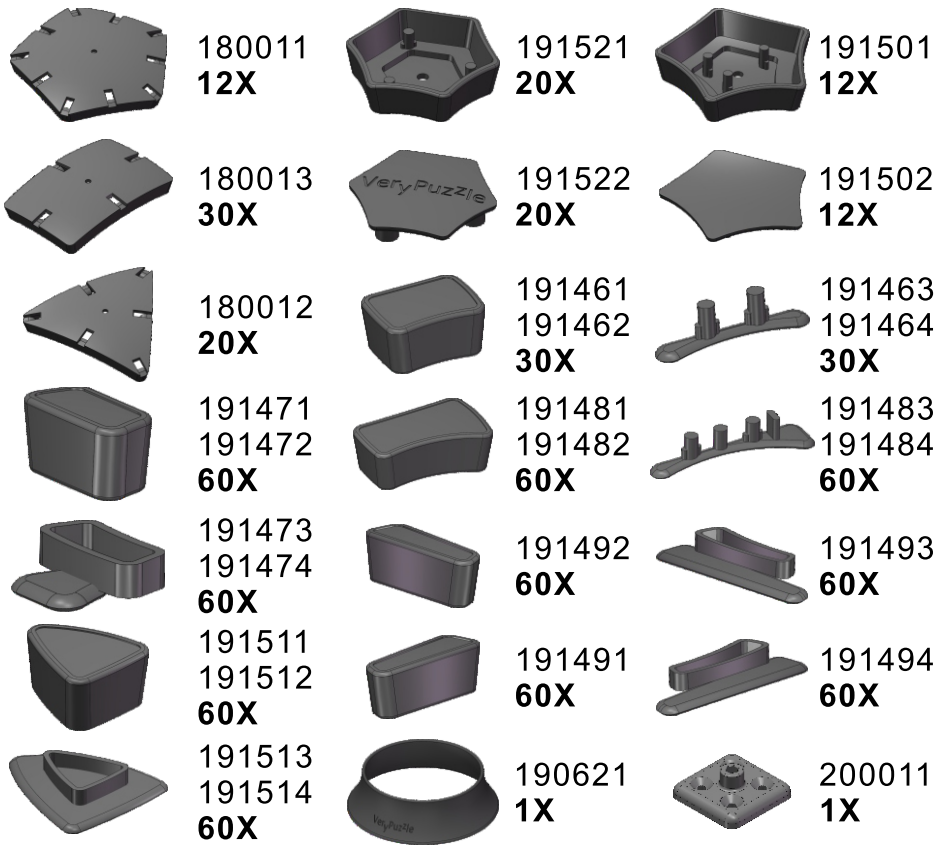
5-fold symmetry
Turns $72 \cdot n$ degrees

Notations and Algorithms



Product Information Card

Product Name	Tuttminx F2
Model NO.	#89
Design	VeryPuzzle Co., Ltd(HK)
Manufacturer	VeryPuzzle Co., Ltd(HK)
Year of release	2020
Maximum diameter	145 mm
Visible moving parts	362 pcs
Coloring strategy	simplified Voronoi
Number of colors	12 colors
Sticker type	textured
Sticker protection	Yes
Number of sticker pieces	492 pcs
Axis & Symmetry	$D(C5)+I(C6)$
Maximum parts shared between two axes	5 parts
In-core spring	Yes
Adjustable tension	No
Technical Name	D113-M5-F2
Topological Print	D27.5I27
Core specification	DIRT130



180X 32X 32X 32X



12X

Customer Service

1. support@verypuzzle.com



VeryPuzzle