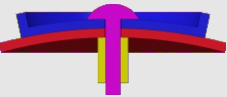
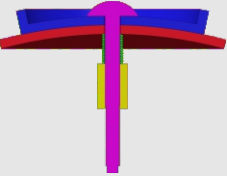
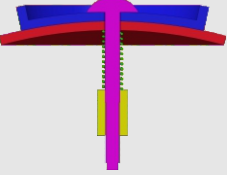
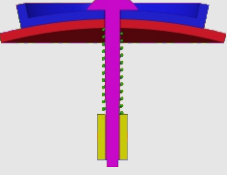


How to tighten the screws

Find your model in the table

Assembly section	Tightness	Models
	tight (no spring)	#61,#75
	tight (spring in green) (Short screw is recommended)	#72,#73,#77,#87,#88 #89
	medium (spring in green)	#94,#93,#90,#86,#85 #83,#82,#81,#80,#79 #78,#76,#71,#70,#69 #68,#67,#66,#65,#64 #63,#62,#60,#59
	loose (spring in green)	Mostly applicable to 'medium' category. Not recommended in general.

1. Tighter is usually better since the spring we provide is soft.
2. Early products had been using longer screws. You can either insert thick washer when necessary or request for short screws in the <Accessory & free parts> directory at our homepage:
<https://www.verypuzzle.com>

VeryPuzzle
2024/04

VeryPuzzle

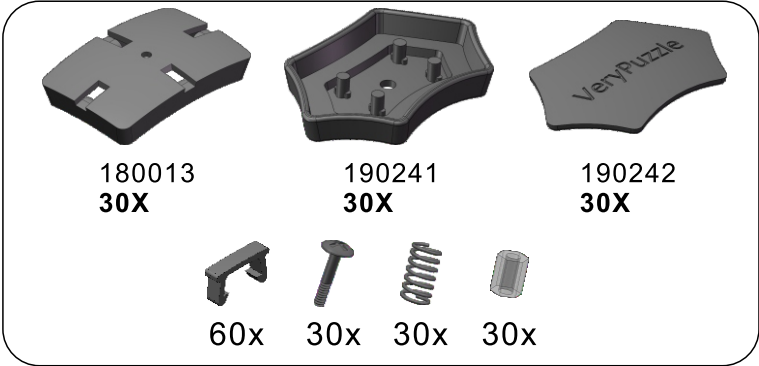


Rhombic Tuttminx V1.0 F1
D1RT5-M5-F1
#65

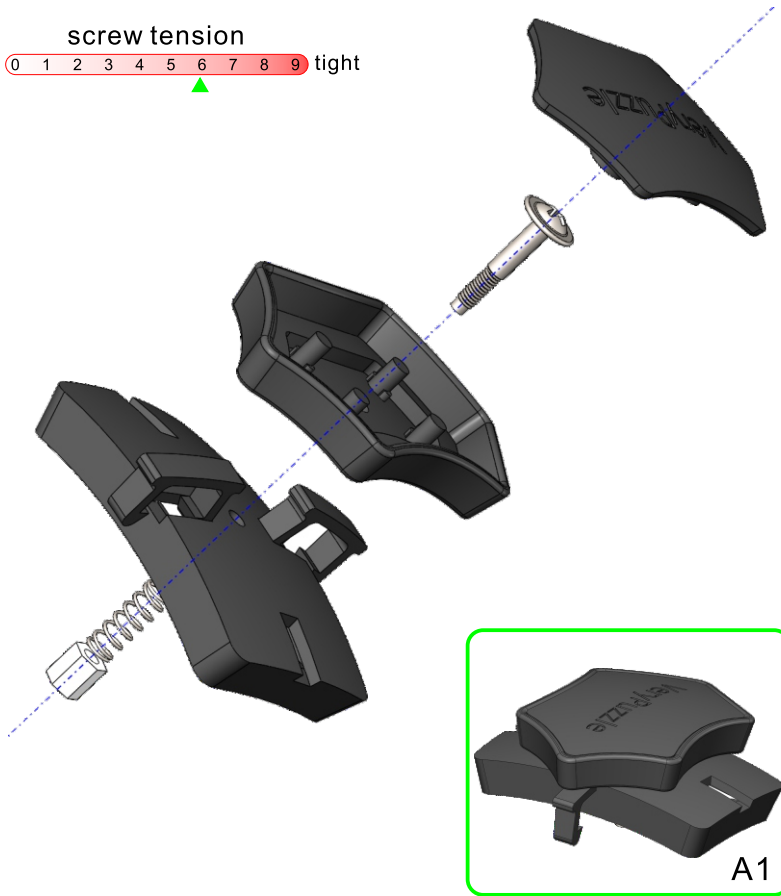
1000+ parts
42 axes



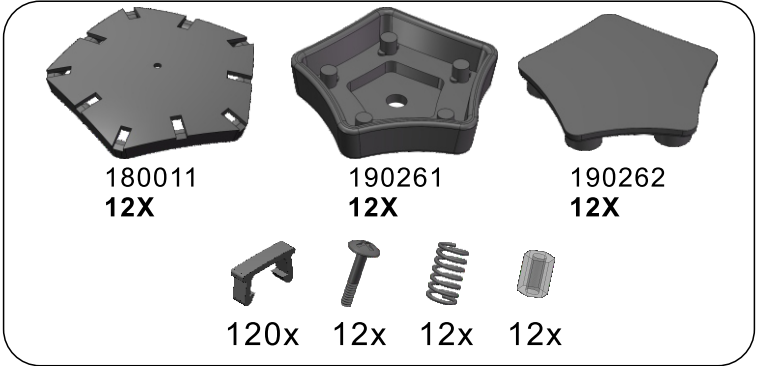
1



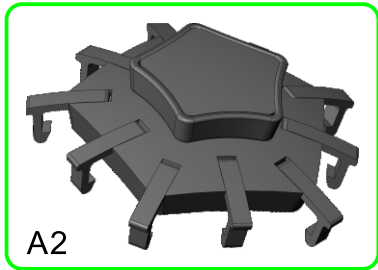
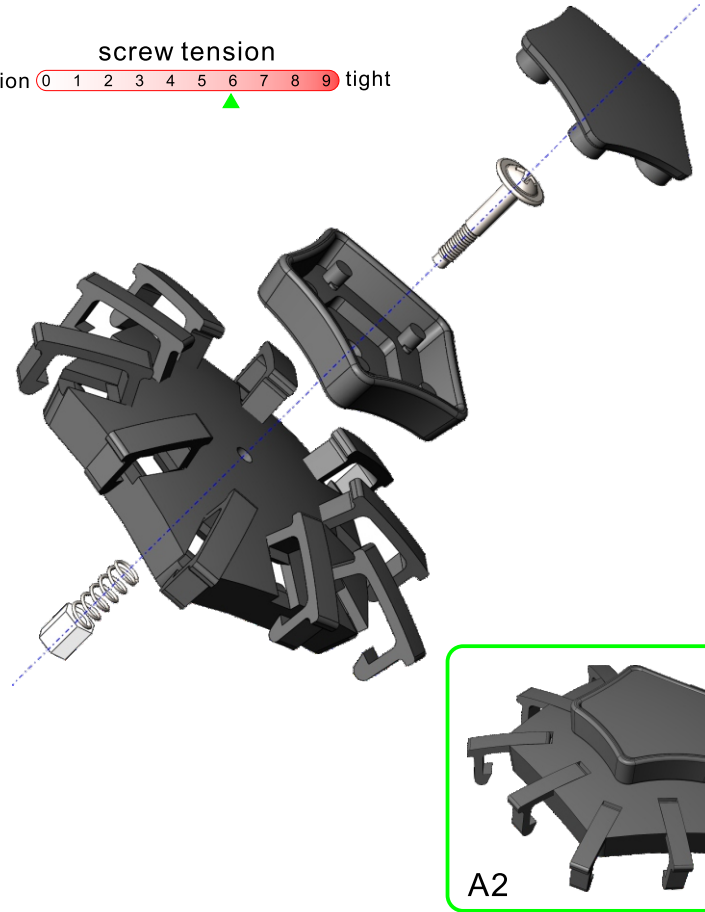
screw tension
no tension 0 1 2 3 4 5 6 7 8 9 tight



2



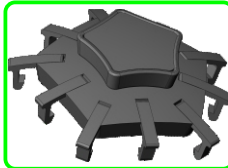
screw tension
no tension 0 1 2 3 4 5 6 7 8 9 tight



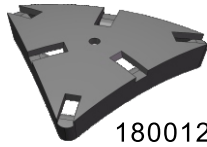
3



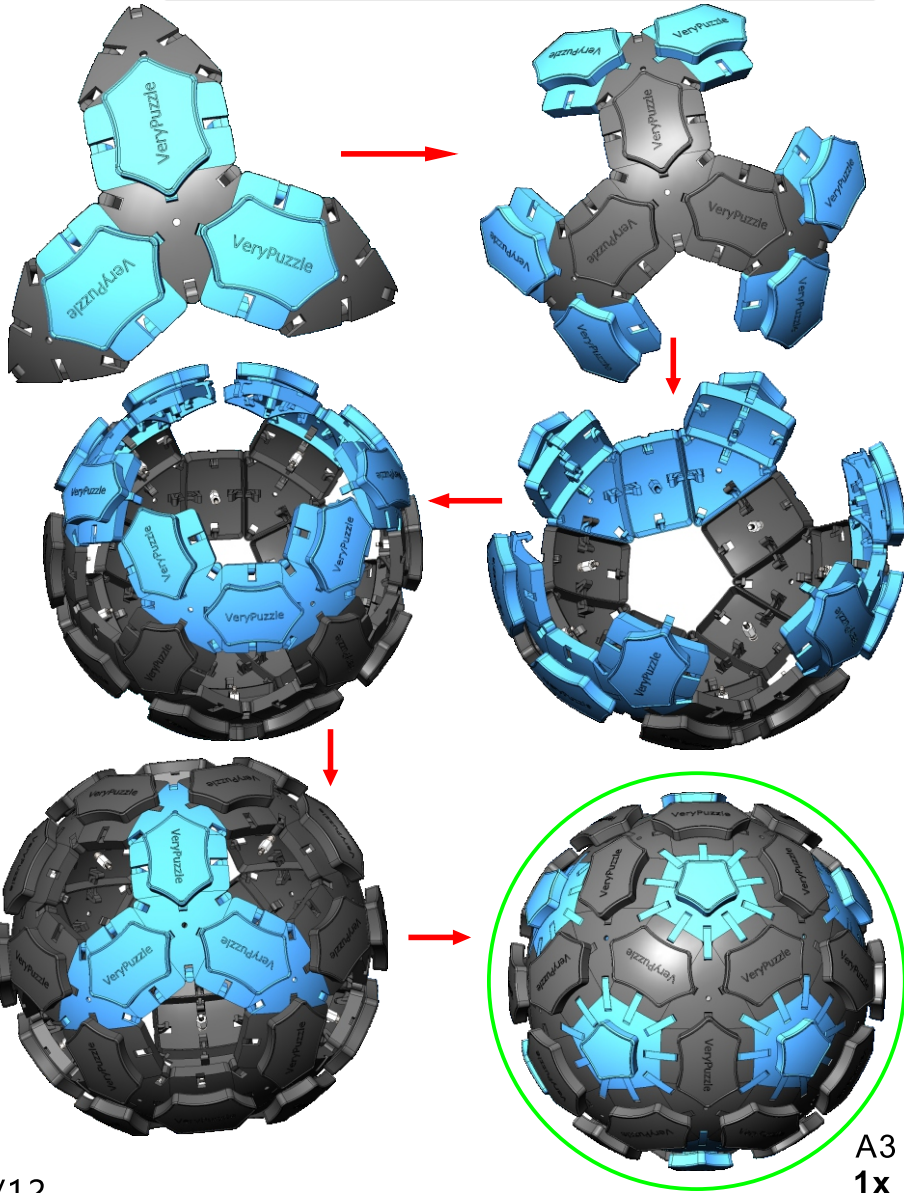
A1 30x



A2 12x



180012
20X

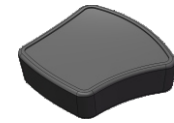


A3
1x

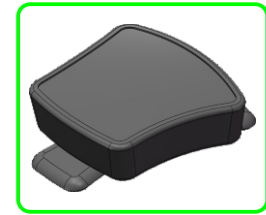
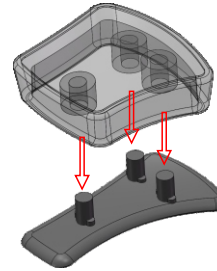
4



190302
60X



190301
60X

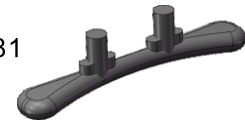


A4
60x

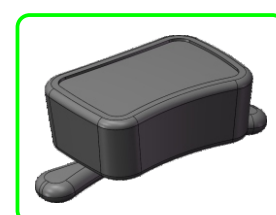
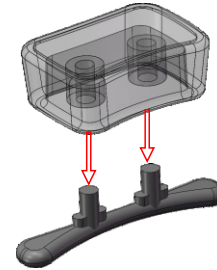
5



190281
60X



190283
60X

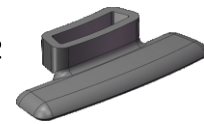


A5
60x

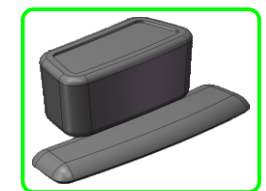
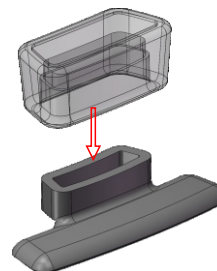
6



190282
120X

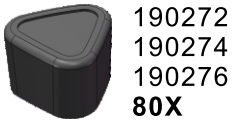


190284
120X

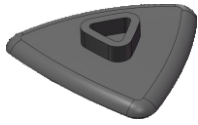


A6
120x

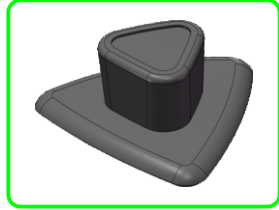
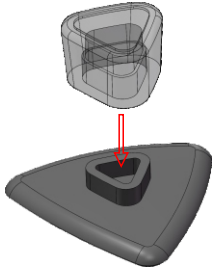
7



190272
190274
190276
80X

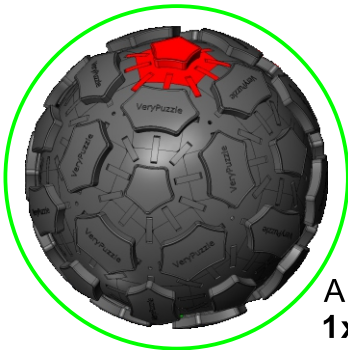


190271
190273
190275
80X



A7
80x

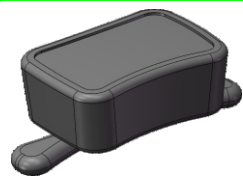
8



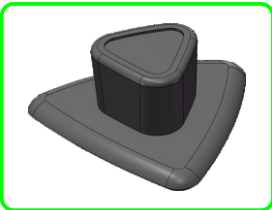
A3
1x



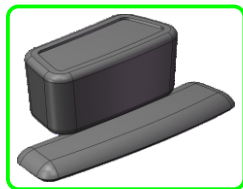
A4
60x



A5
60x

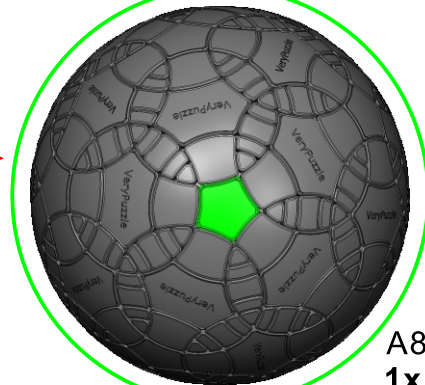
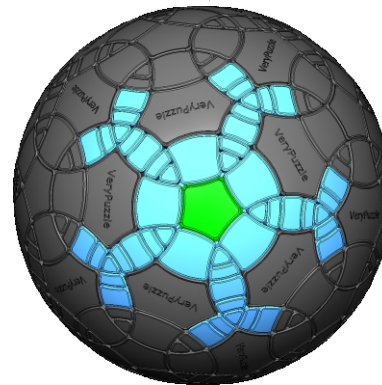
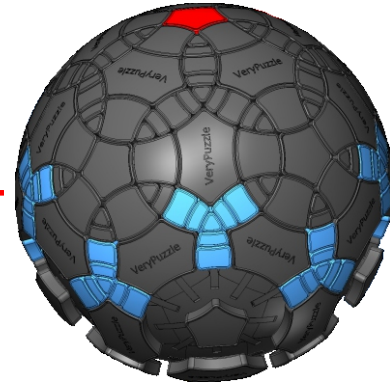
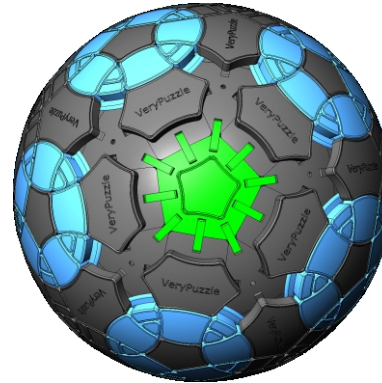
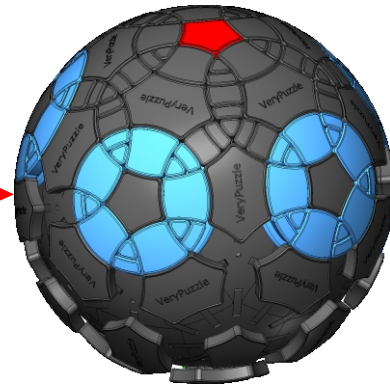
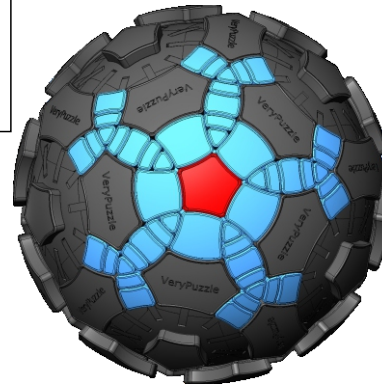


A7
80x



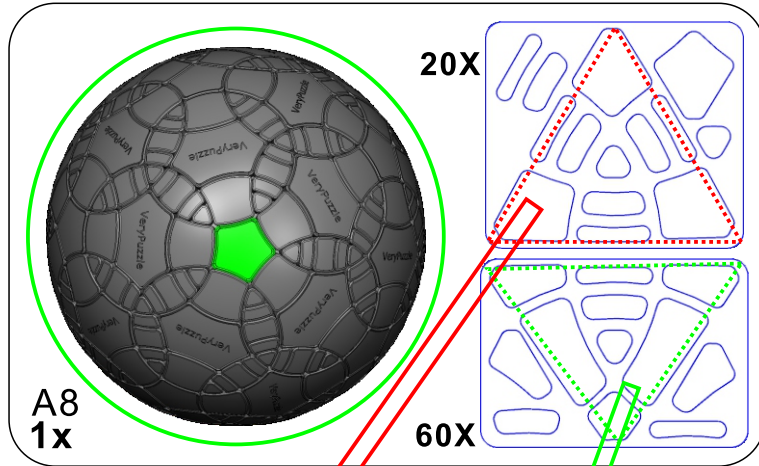
A6
120x

8

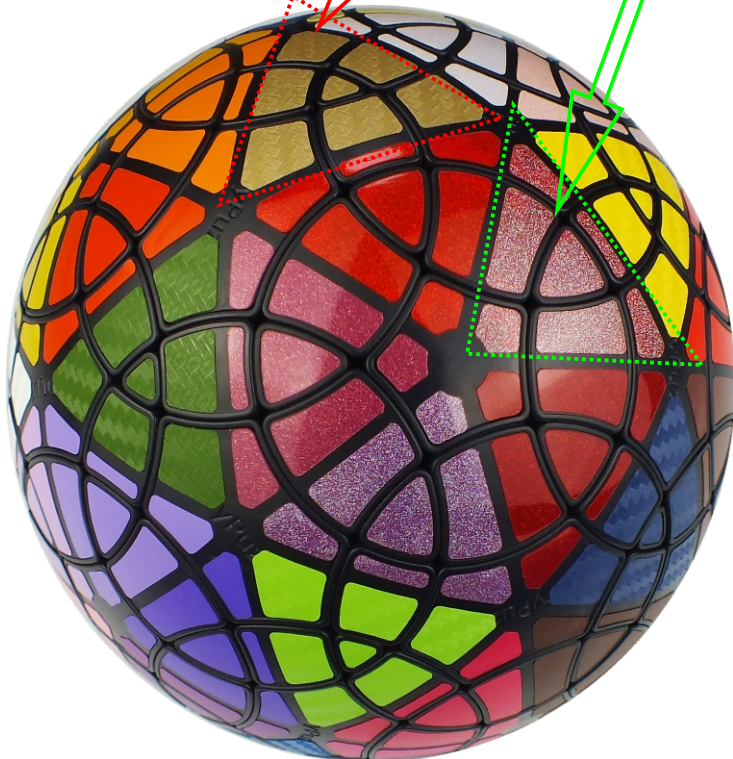


A8
1x

9



Clean part surface before applying stickers



10

Rotation Rules

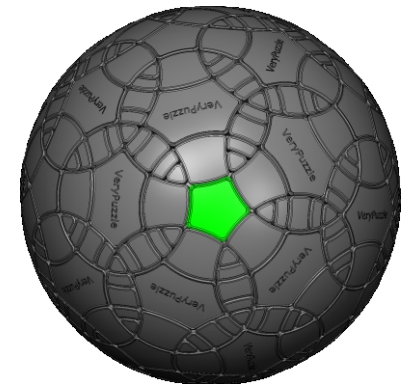
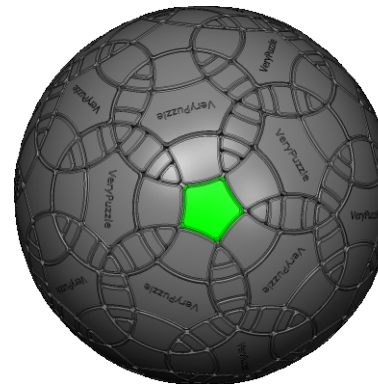


5-fold symmetry
Turns $72 \cdot n$ degrees

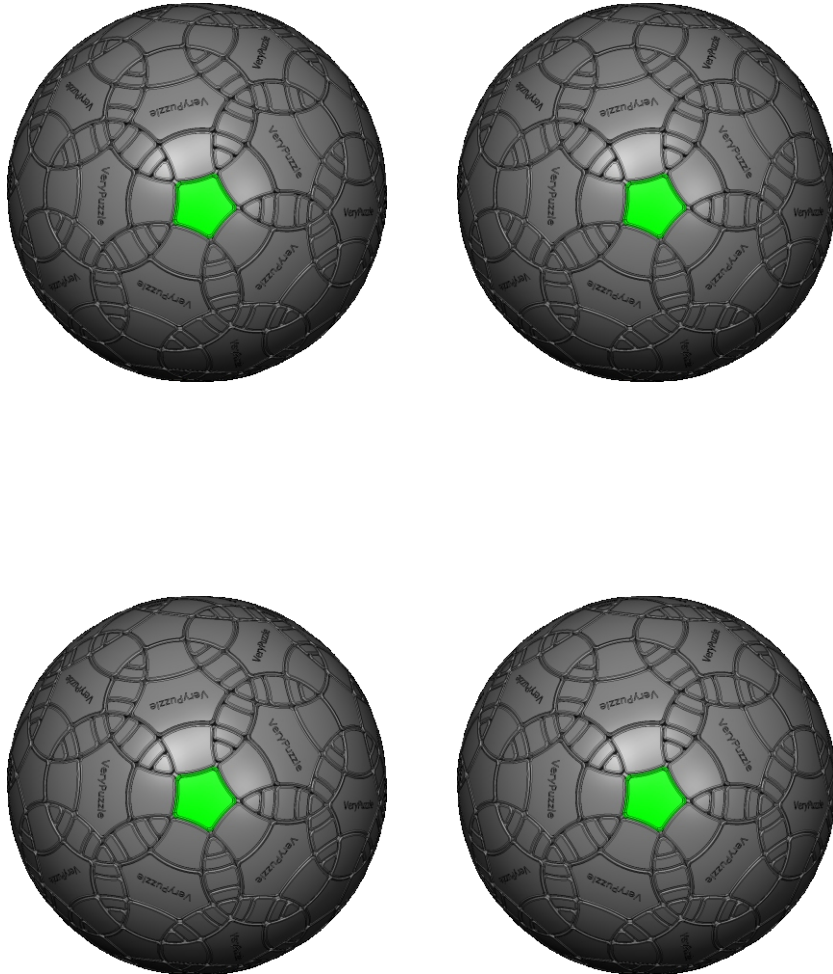


R4 symmetry
Turns $180 \cdot n$ degrees
Turns $180 \cdot n + 63.4$ degrees

Notations and Algorithms

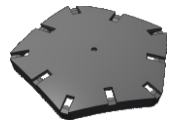


Notations and Algorithms



Product Information Card

Product Name	Rhombic Tuttminx V1.0 F1
Model NO.	#65
Design	VeryPuzzle Co., Ltd(HK)
Manufacturer	VeryPuzzle Co., Ltd(HK)
Year of release	2019
Maximum diameter	145 mm
Visible moving parts	362 pcs
Coloring strategy	Delauney triangulation
Number of colors	80 colors
Sticker type	textured, flare, uniform
Sticker protection	Yes
Number of sticker pieces	580 pcs
Axis & Symmetry	$D(C5)+RT(R4)$
Maximum parts shared between two axes	5 parts
In-core spring	Yes
Adjustable tension	No
Technical Name	D1RT5-M5-F1
Topological Print	D23RT24
Core specification	DIRT130



180011
12X



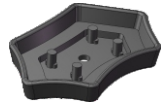
190242
30X



190261
12X



180013
30X



190241
30X



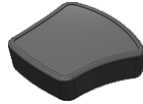
190262
12X



180012
20X



190272
190274
190276
80X



190301
60X



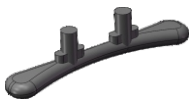
190281
60X



190271
190273
190275
80X



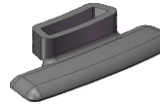
190302
60X



190283
60X



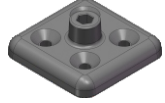
190282
120X



190284
120X



190621
1X



200011
1X



180X



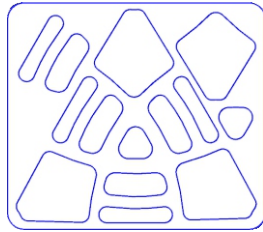
42X



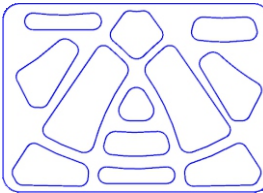
42X



42X



20X



60X

Customer Service

1. support@verypuzzle.com



2. **VeryPuzzle**