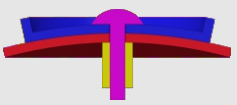
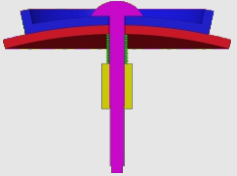
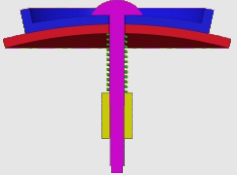
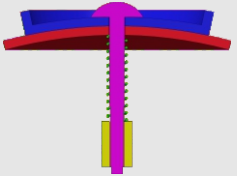


How to tighten the screws

Find your model in the table

Assembly section	Tightness	Models
	tight (no spring)	#61,#75
	tight (spring in green) (Short screw is recommended)	#72,#73,#77,#87,#88 #89
	medium (spring in green)	#94,#93,#90,#86,#85 #83,#82,#81,#80,#79 #78,#76,#71,#70,#69 #68,#67,#66,#65,#64 #63,#62,#60,#59
	loose (spring in green)	Mostly applicable to 'medium' category. Not recommended in general.

1. Tighter is usually better since the spring we provide is soft.

2. Early products had been using longer screws. You can either insert thick washer when necessary or request for short screws in the <Accessory & free parts> directory at our homepage:
<https://www.verypuzzle.com>

VeryPuzzle
2024/04

VeryPuzzle

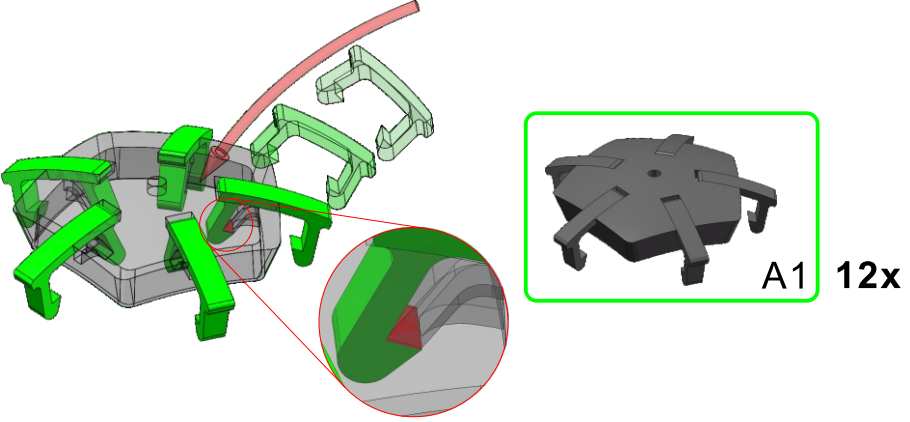


Megaminx Ball V1.0 - C1
D5-C1
#60

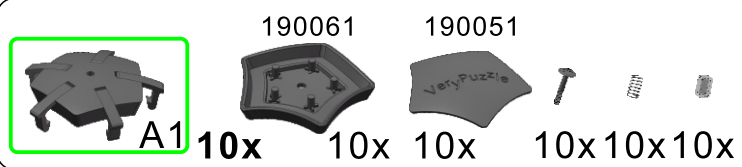
300+ parts
12 axes



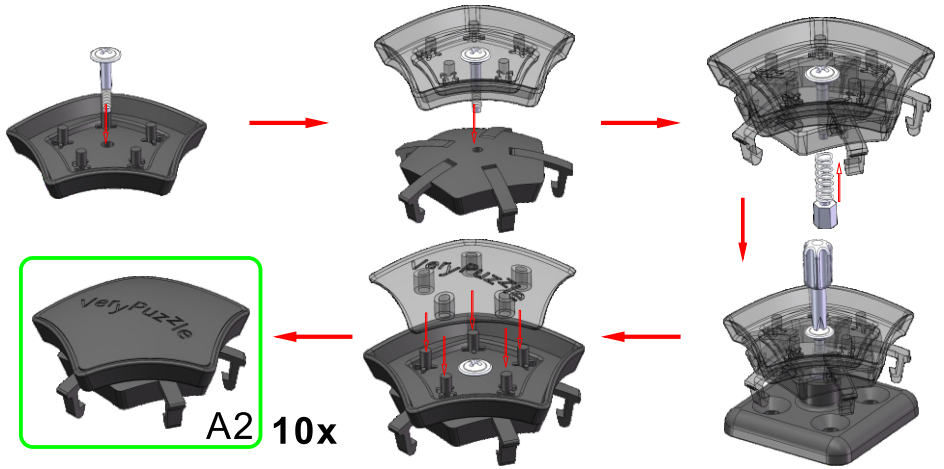
1



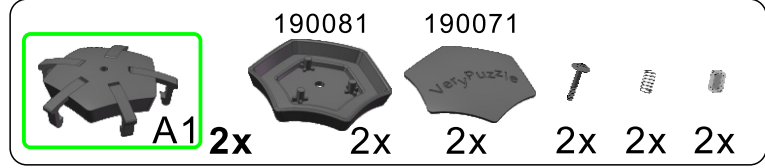
2



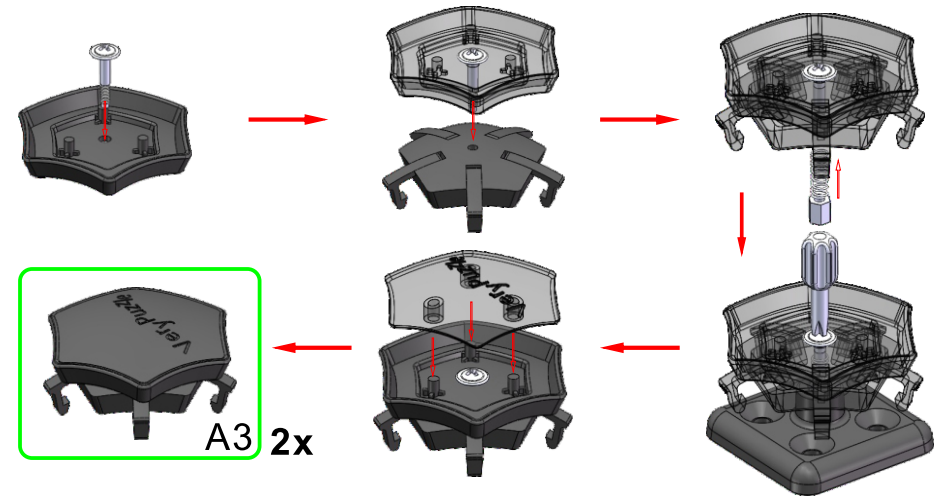
screw tension
no tension 0 1 2 3 4 5 6 7 8 9 tight



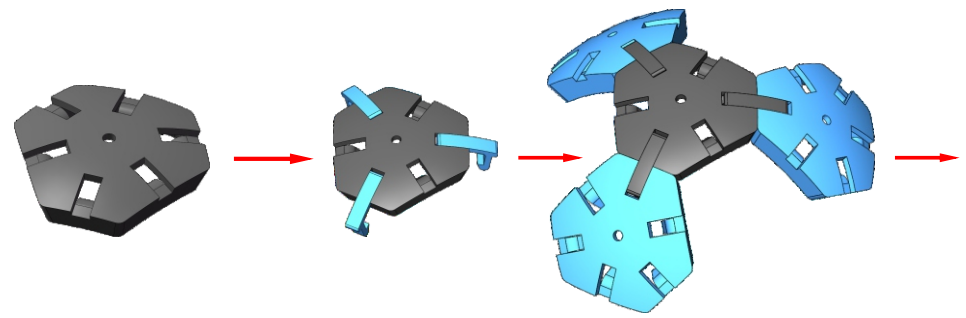
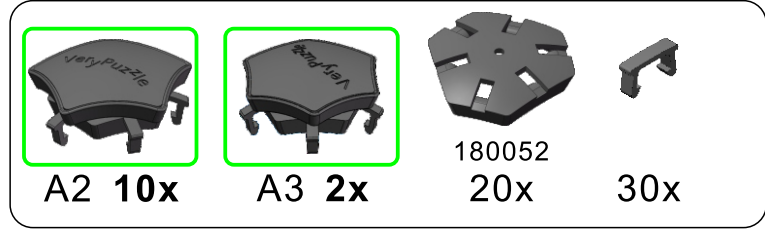
3



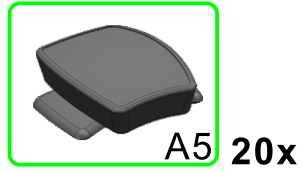
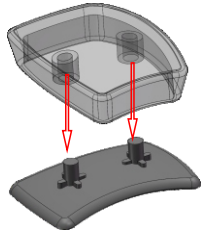
screw tension
no tension 0 1 2 3 4 5 6 7 8 9 tight



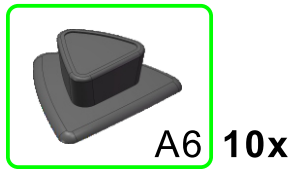
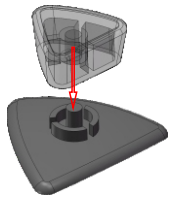
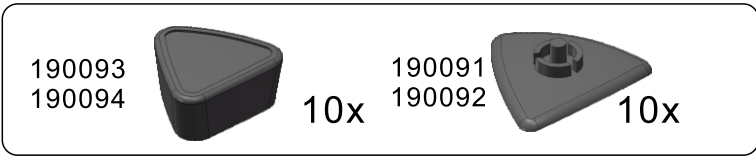
4



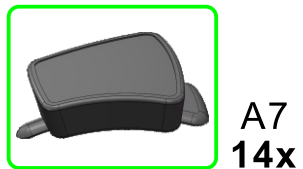
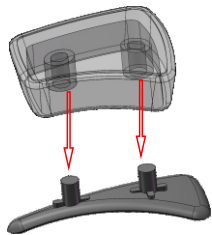
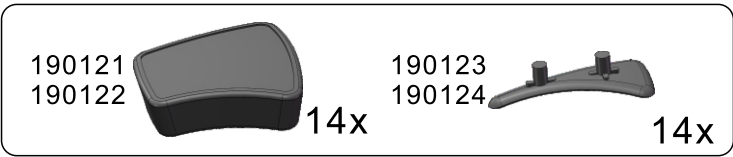
5



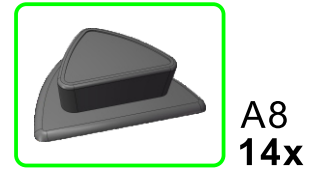
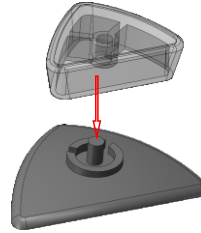
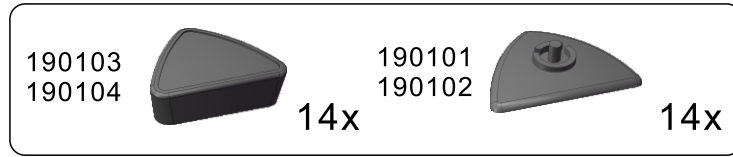
6



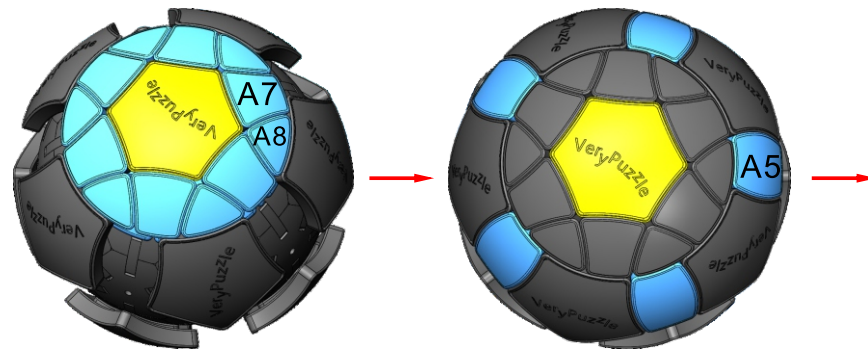
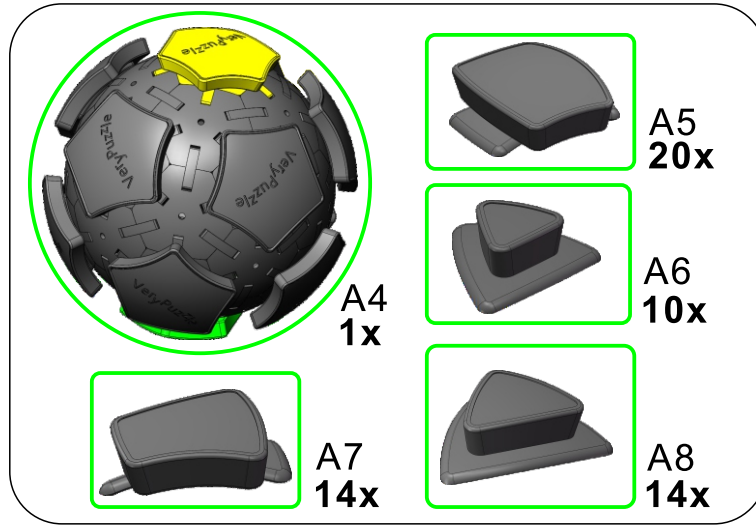
7

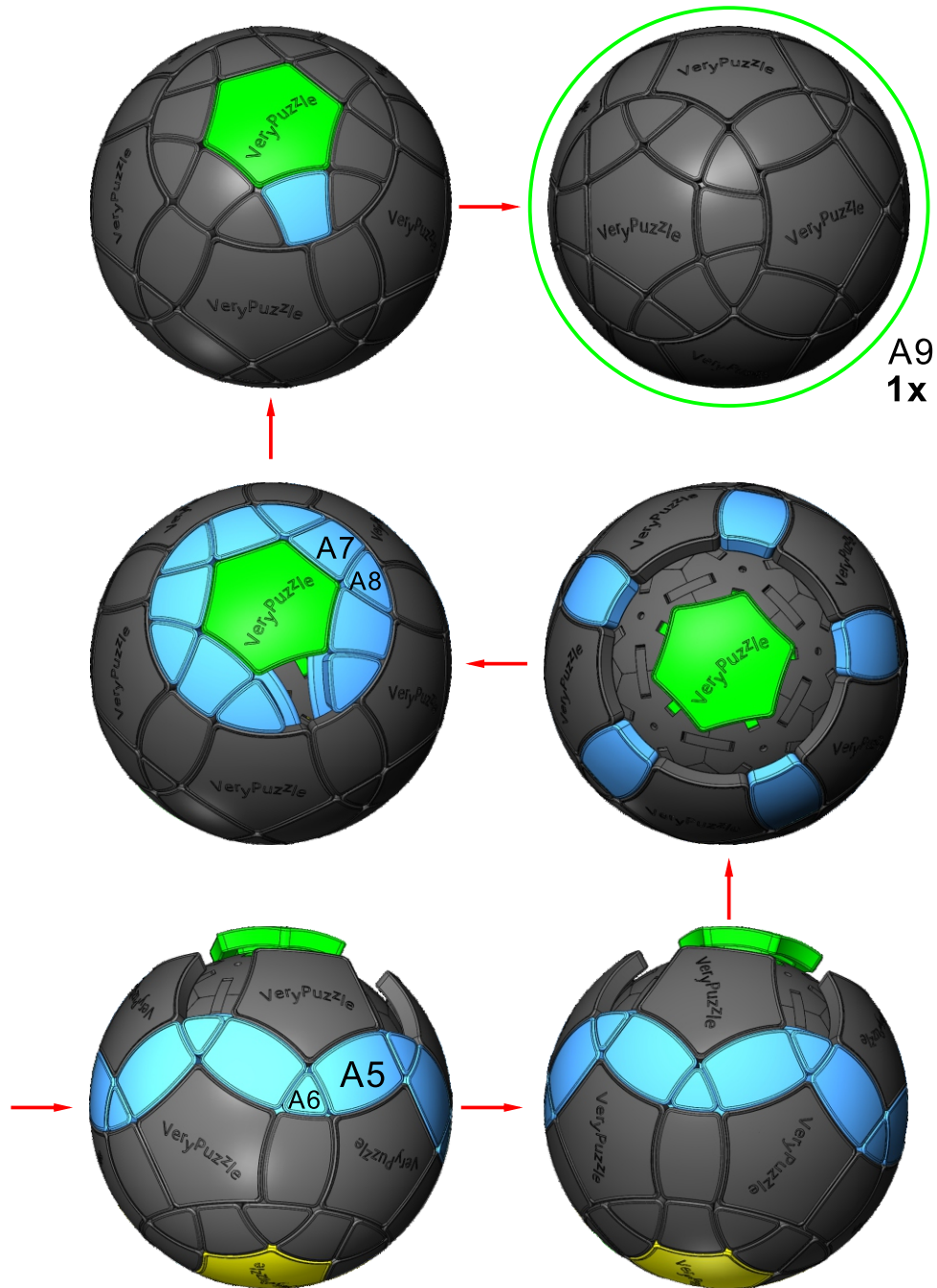


8

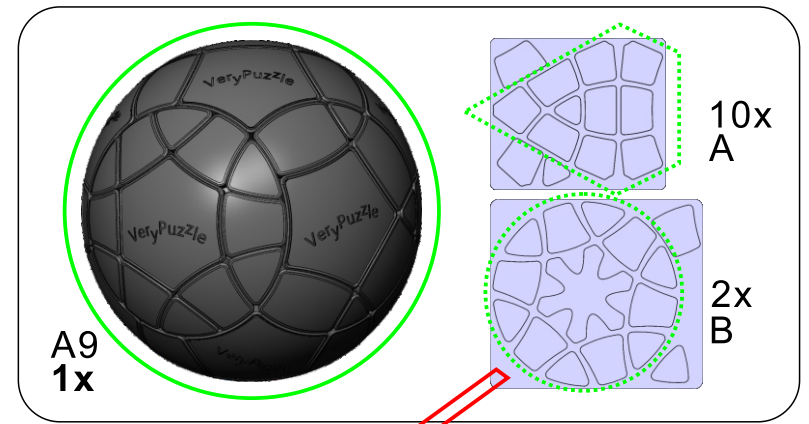


9

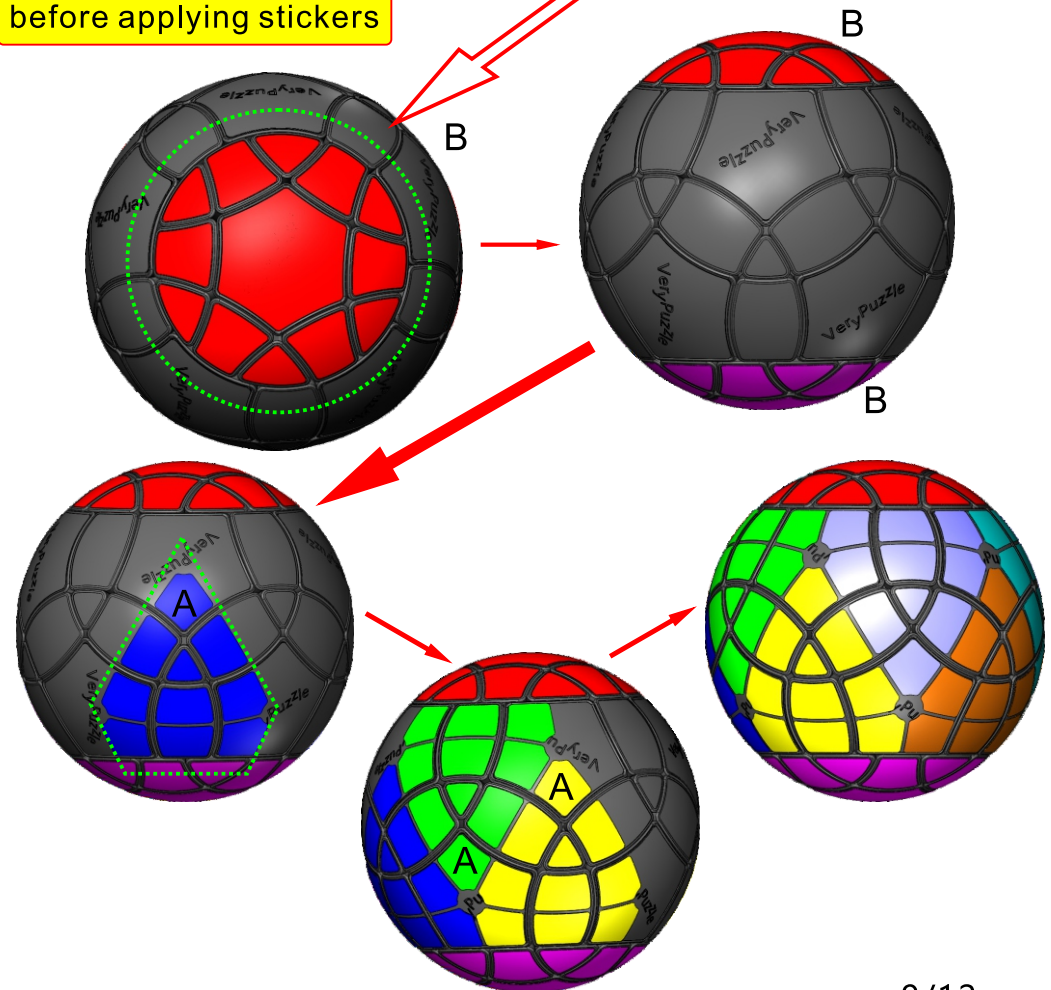




10



Clean part surface before applying stickers



11

Rotation Rules



6-fold symmetry,
turns $60 \cdot n$ degrees



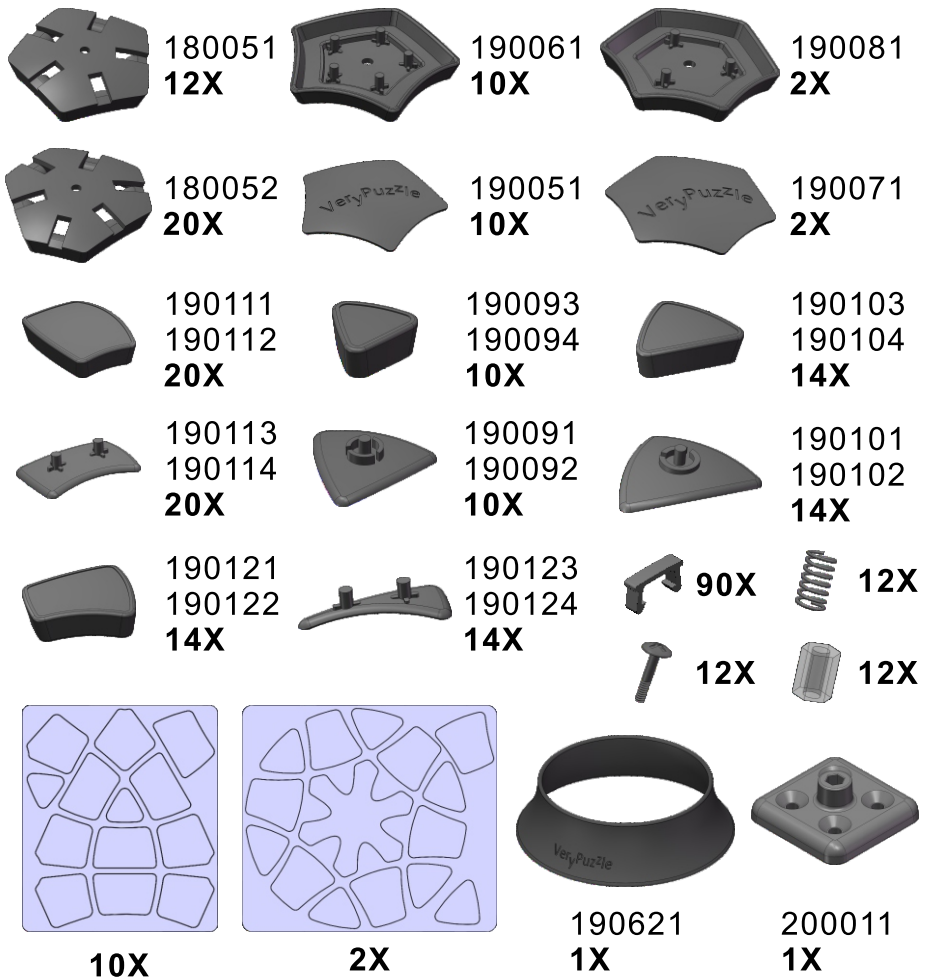
5-fold symmetry when aligned,
turns $72 \cdot n$ degrees

Notations and Algorithms



Product Information Card

Product Name	Megaminx Ball V1.0 - C1
Model NO.	#60
Design	VeryPuzzle Co., Ltd(HK)
Manufacturer	VeryPuzzle Co., Ltd(HK)
Year of release	2020
Maximum diameter	95 mm
Visible moving parts	70 pcs
Coloring strategy	Mixed
Number of colors	12 colors
Sticker type	uniform, matt
Sticker protection	Yes
Number of sticker pieces	130 pcs
Axis & Symmetry	$D-\{P1,P2\}(C5)+\{P1,P2\}(C6)$
Maximum parts shared between two axes	3 parts
In-core spring	Yes
Adjustable tension	No
Technical Name	D5-C1
Topological Print	D49
Core specification	DI80



Customer Service

1. support@verypuzzle.com

2.



VeryPuzzle