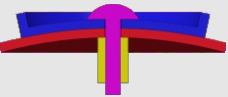
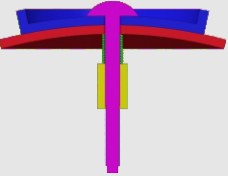
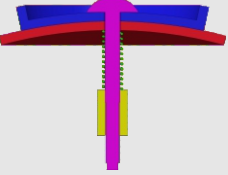
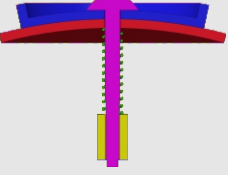


How to tighten the screws

Find your model in the table



Assembly section	Tightness	Models
	tight (no spring)	#61,#75
	tight (spring in green) (Short screw is recommended)	#72,#73,#77,#87,#88 #89
	medium (spring in green)	#94,#93,#90,#86,#85 #83,#82,#81,#80,#79 #78,#76,#71,#70,#69 #68,#67,#66,#65,#64 #63,#62,#60,#59
	loose (spring in green)	Mostly applicable to 'medium' category. Not recommended in general.

1. Tighter is usually better since the spring we provide is soft.
2. Early products had been using longer screws. You can either insert thick washer when necessary or request for short screws in the <Accessory & free parts> directory at our homepage:
<https://www.verypuzzle.com>

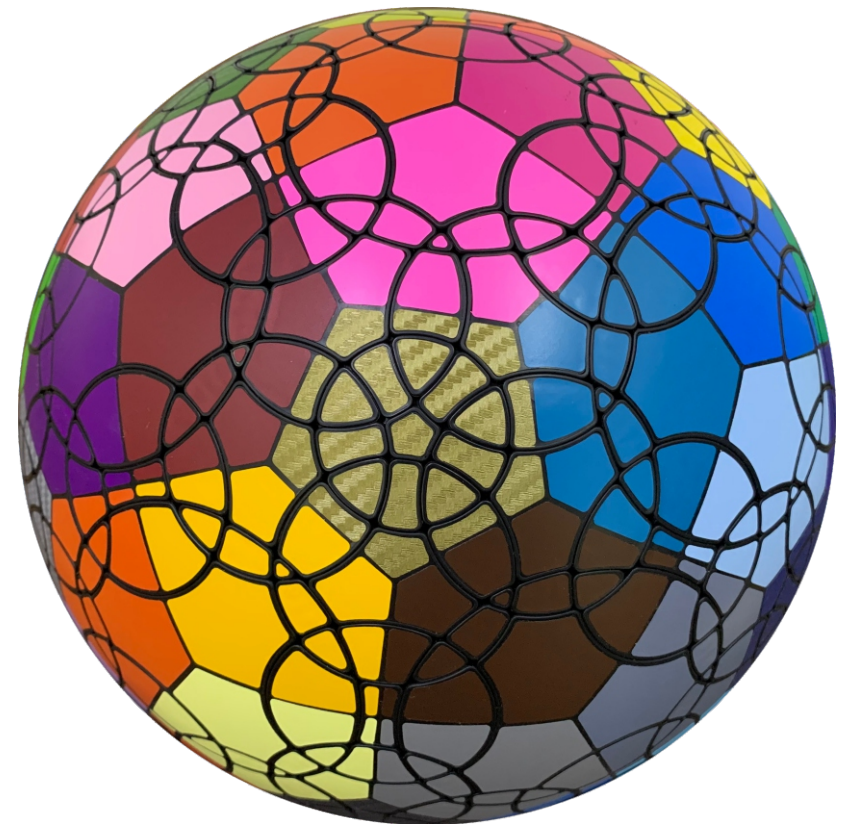
VeryPuzzle
2024/04

VeryPuzzle

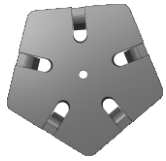


DIRT-DCL
D1I1RT1-DCL3
#93

2200+ parts
122 axes



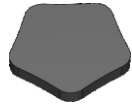
1



200201
12X



200051
12X



200052
12X



60x



12x

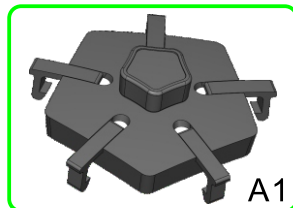
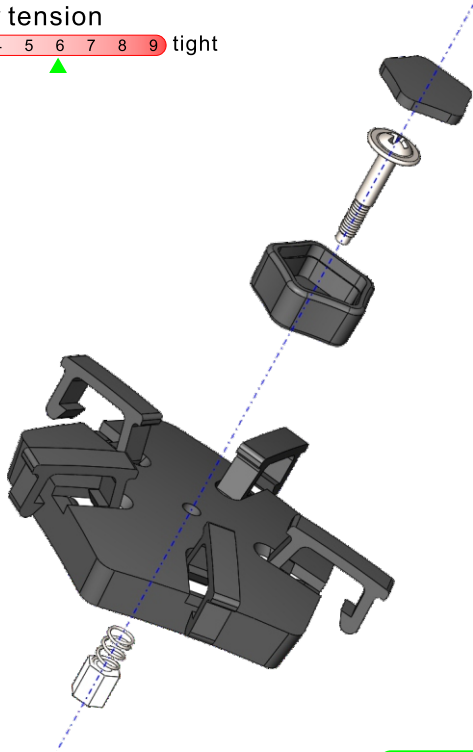


12x



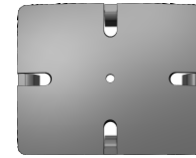
12x

screw tension
no tension 0 1 2 3 4 5 6 7 8 9 tight



A1
12x

2



200221
30X



200121
30X



200122
30X



30x

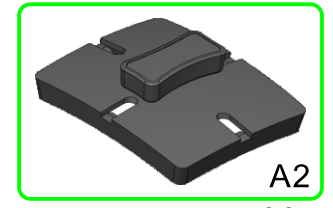
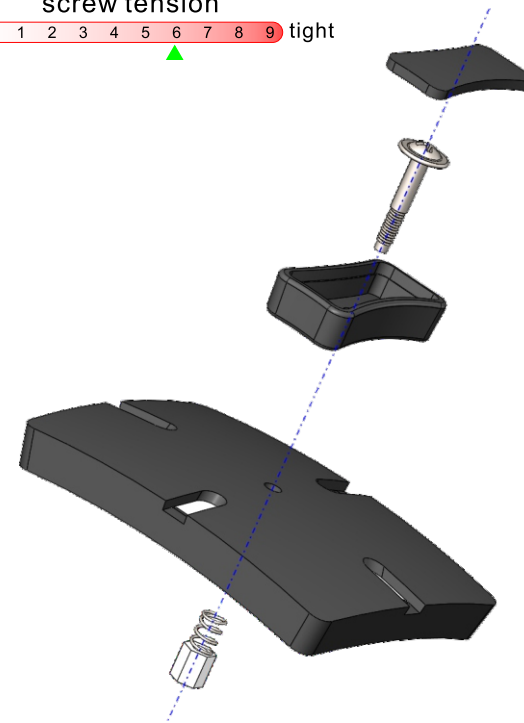


30x



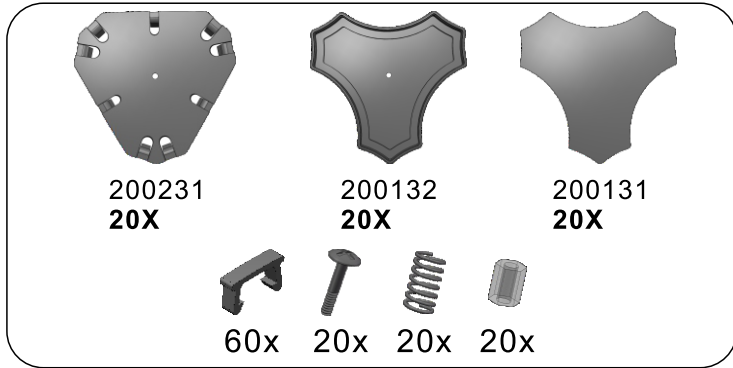
30x

screw tension
no tension 0 1 2 3 4 5 6 7 8 9 tight

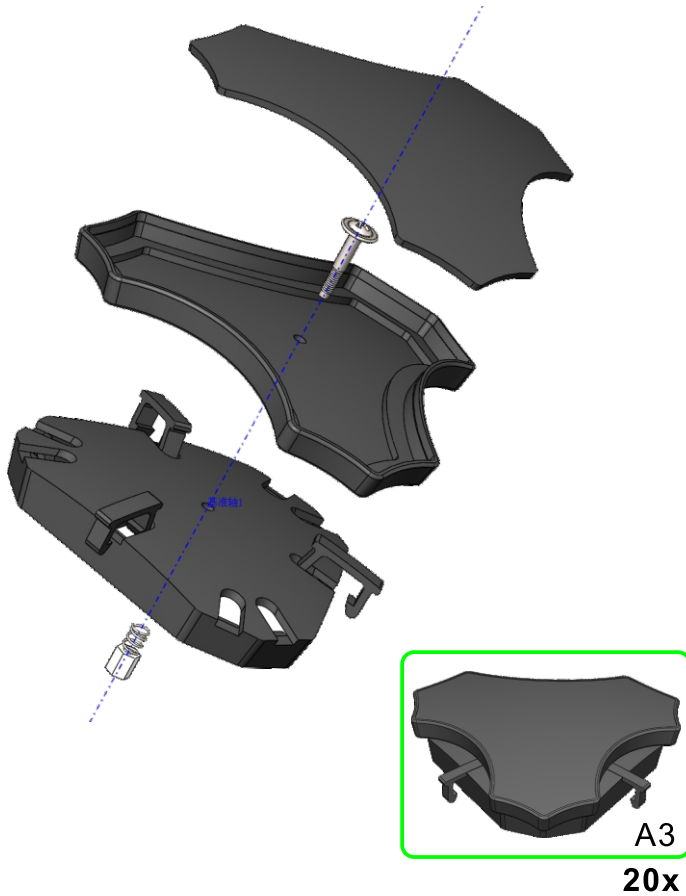


A2
30x

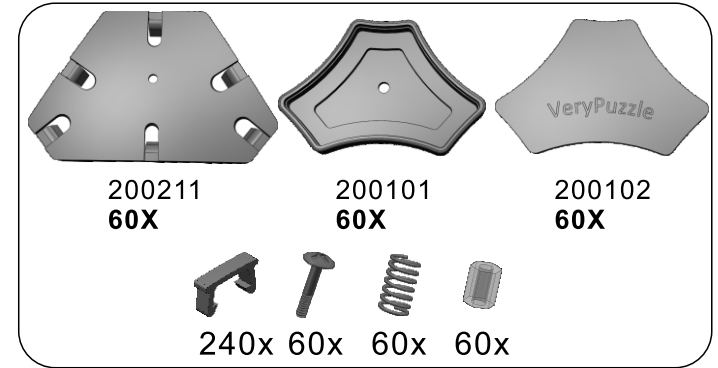
3



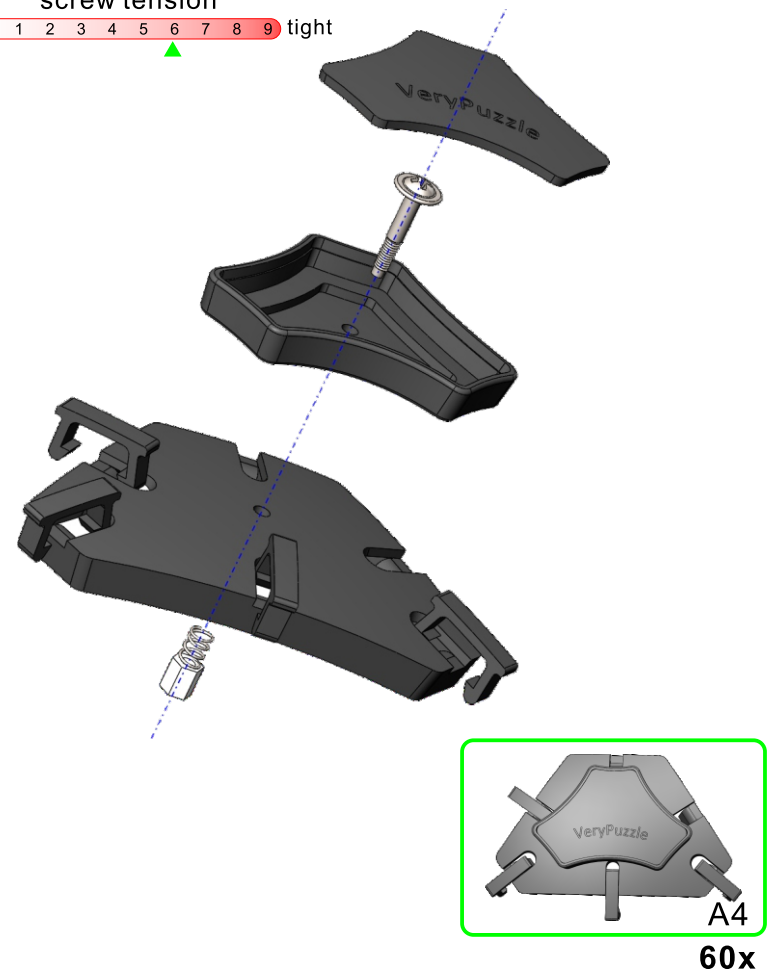
screw tension
no tension 0 1 2 3 4 5 6 7 8 9 tight



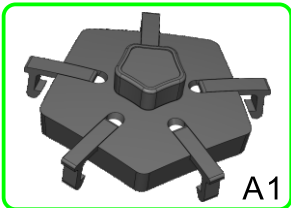
4



screw tension
no tension 0 1 2 3 4 5 6 7 8 9 tight

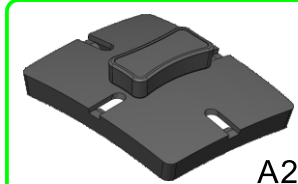


5



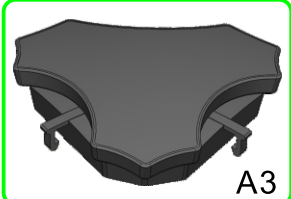
A1

12x



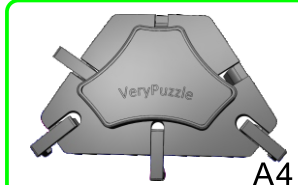
A2

30x



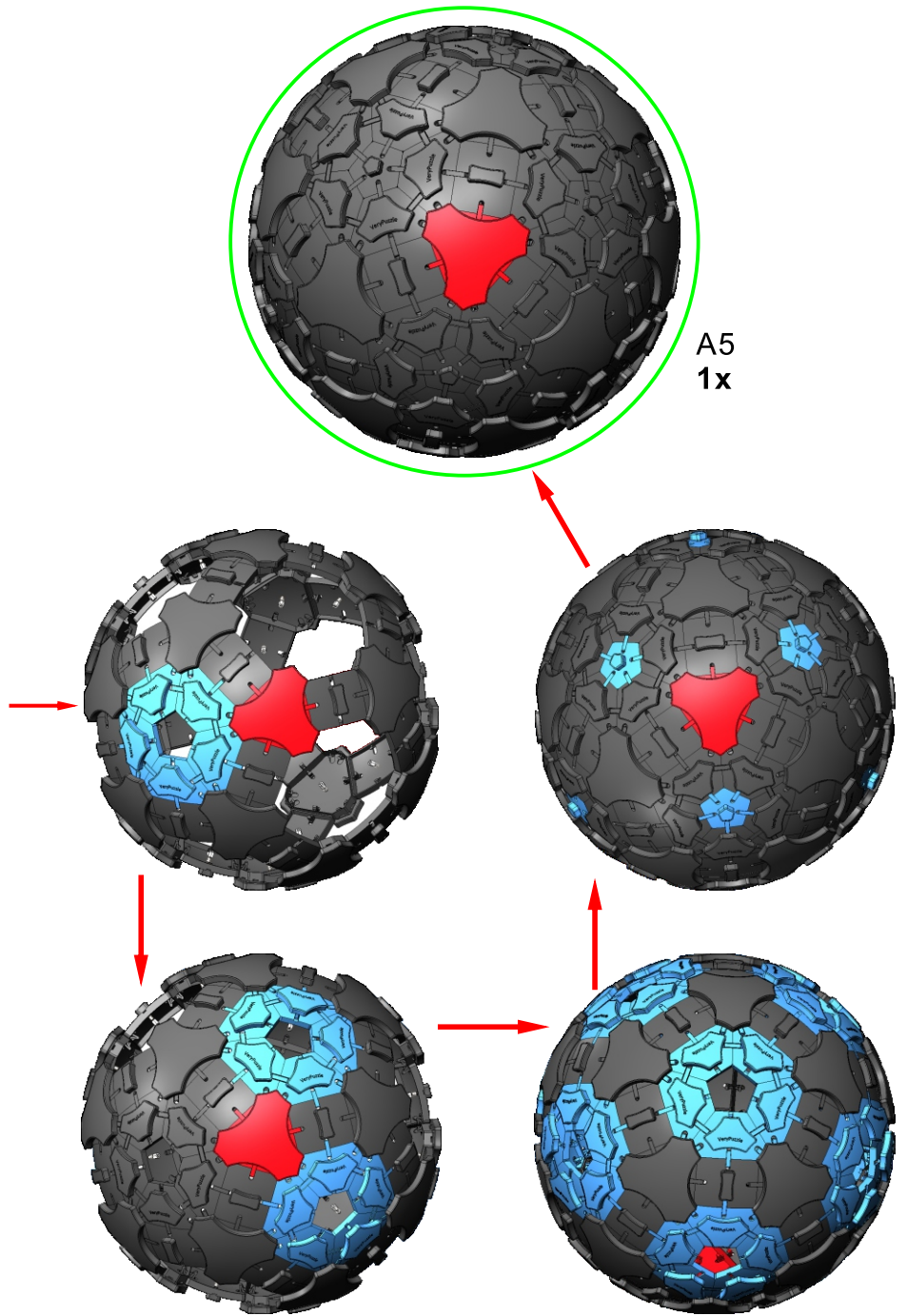
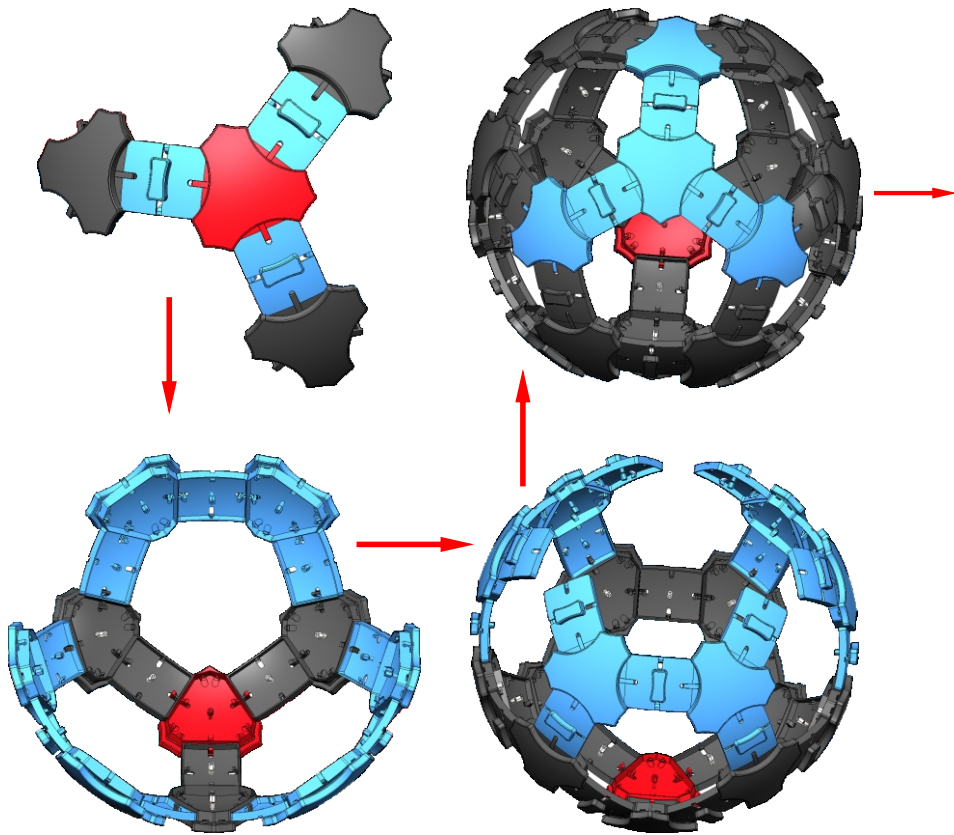
A3

20x



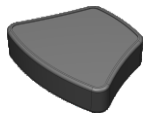
A4

60x

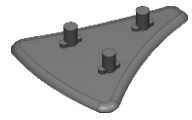


A5
1x

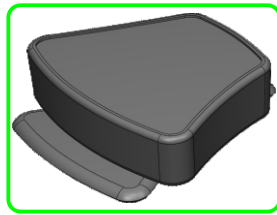
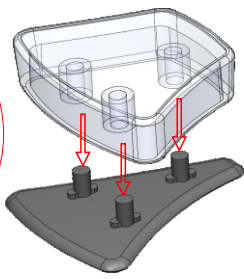
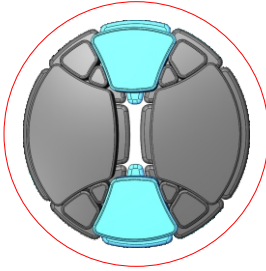
6



200112
60X

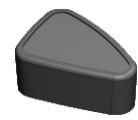


200111
60X

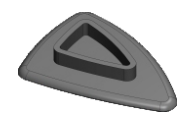


A6
60x

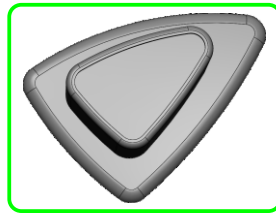
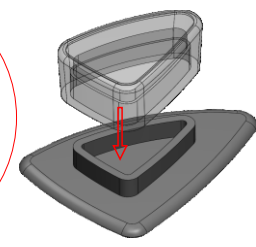
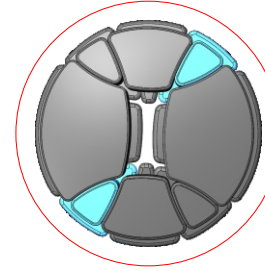
9



200163
60X

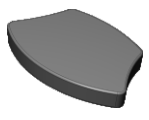


200162
60X



A9
60x

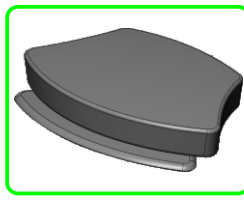
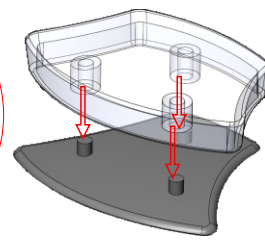
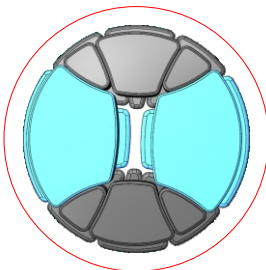
7



200142
60X



200141
60X

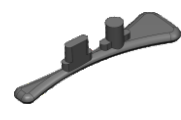


A7
60x

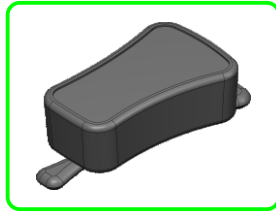
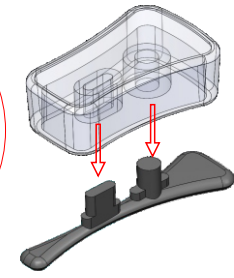
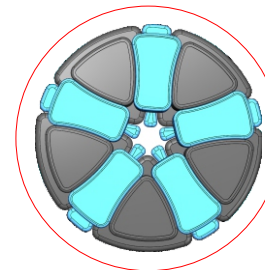
10



200062
60X

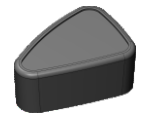


200061
60X



A10
60x

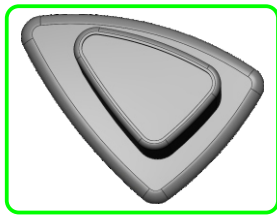
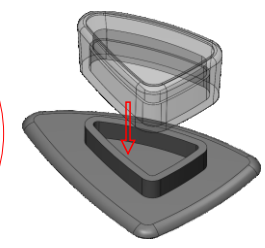
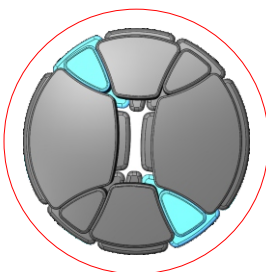
8



200164
60X

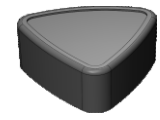


200161
60X

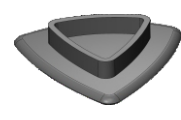


A8
60x

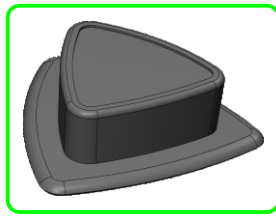
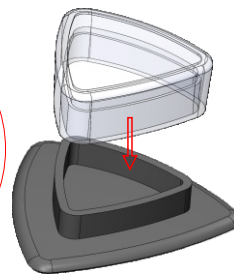
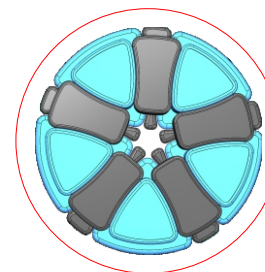
11



200072
60X

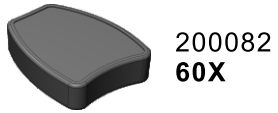


200071
60X



A11
60x

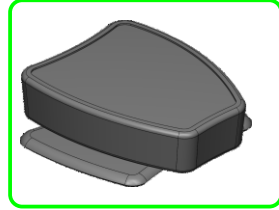
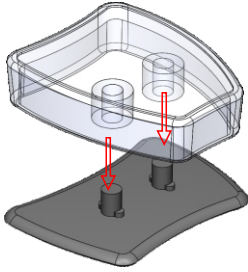
12



200082
60X



200081
60X



A12
60x

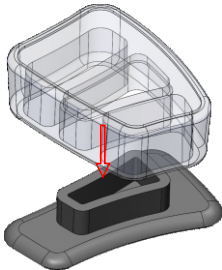
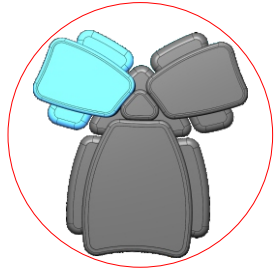
13



200151
60X



200154
60X

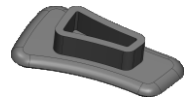


A13
60x

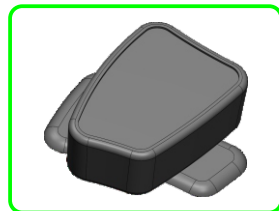
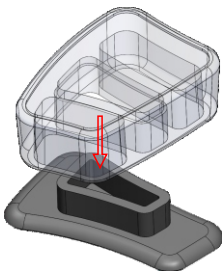
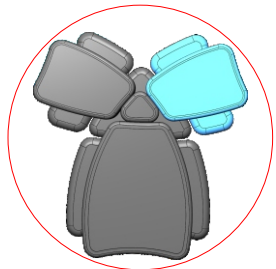
14



200152
60X



200153
60X

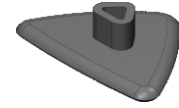


A14
60x

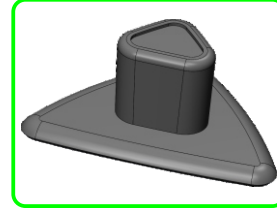
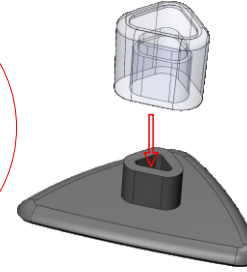
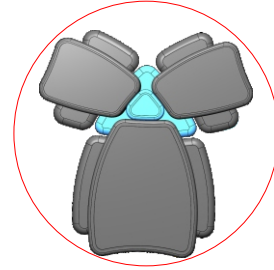
15



200093
200094
60X

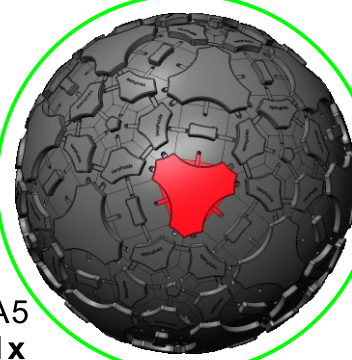


200091
200092
60X

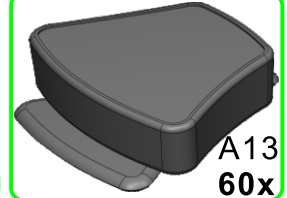


A15
60x

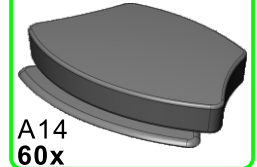
16



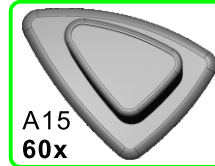
A5
1x



A13
60x



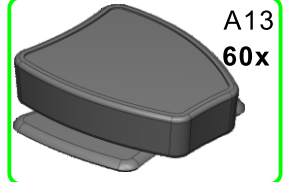
A14
60x



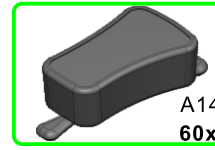
A15
60x



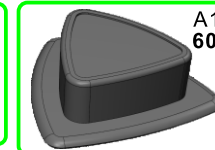
A13
60x



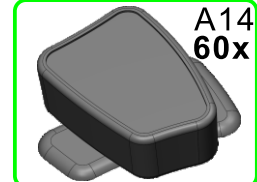
A13
60x



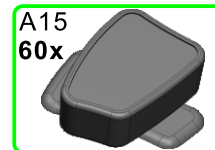
A14
60x



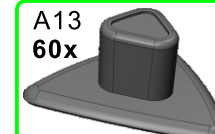
A15
60x



A14
60x

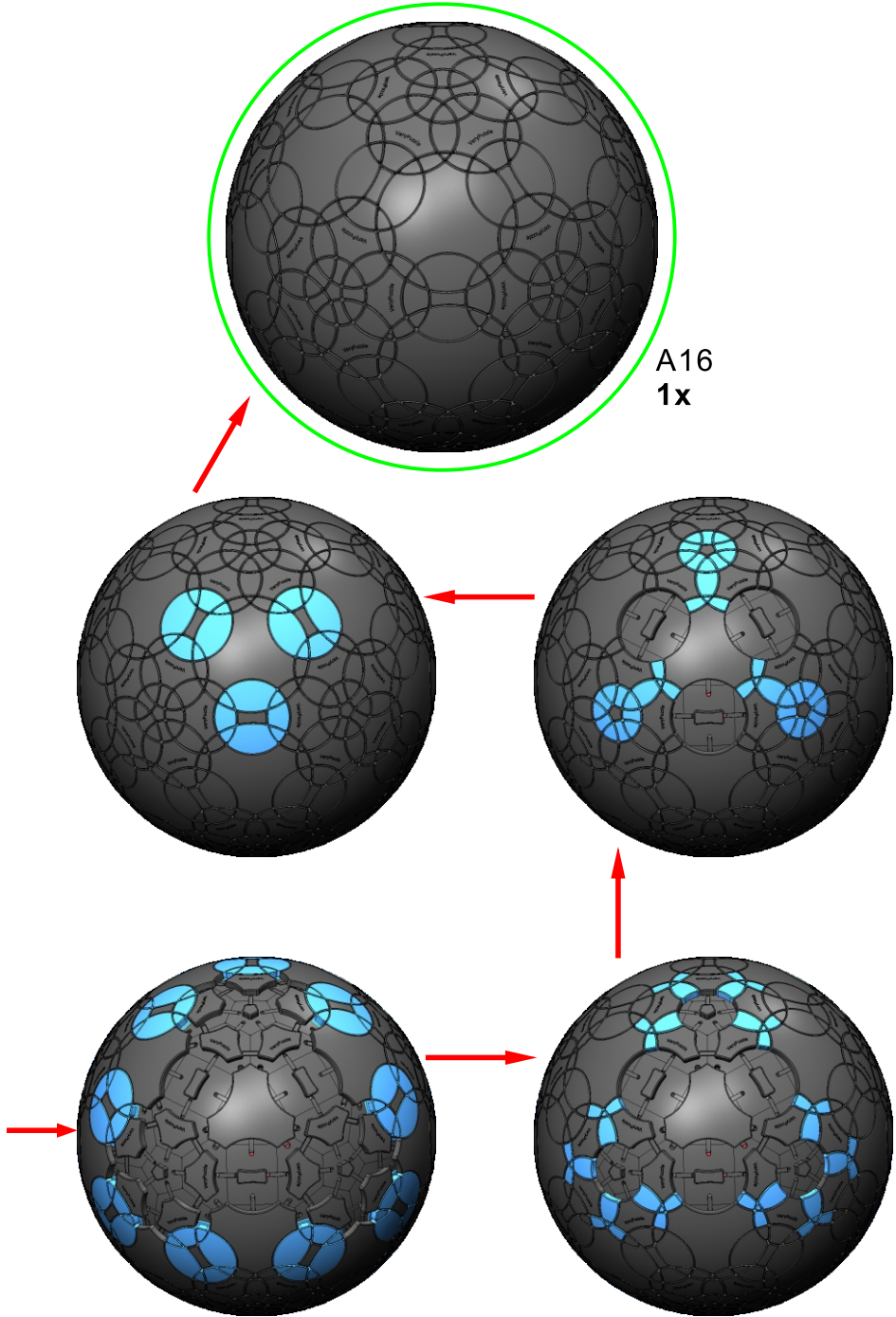
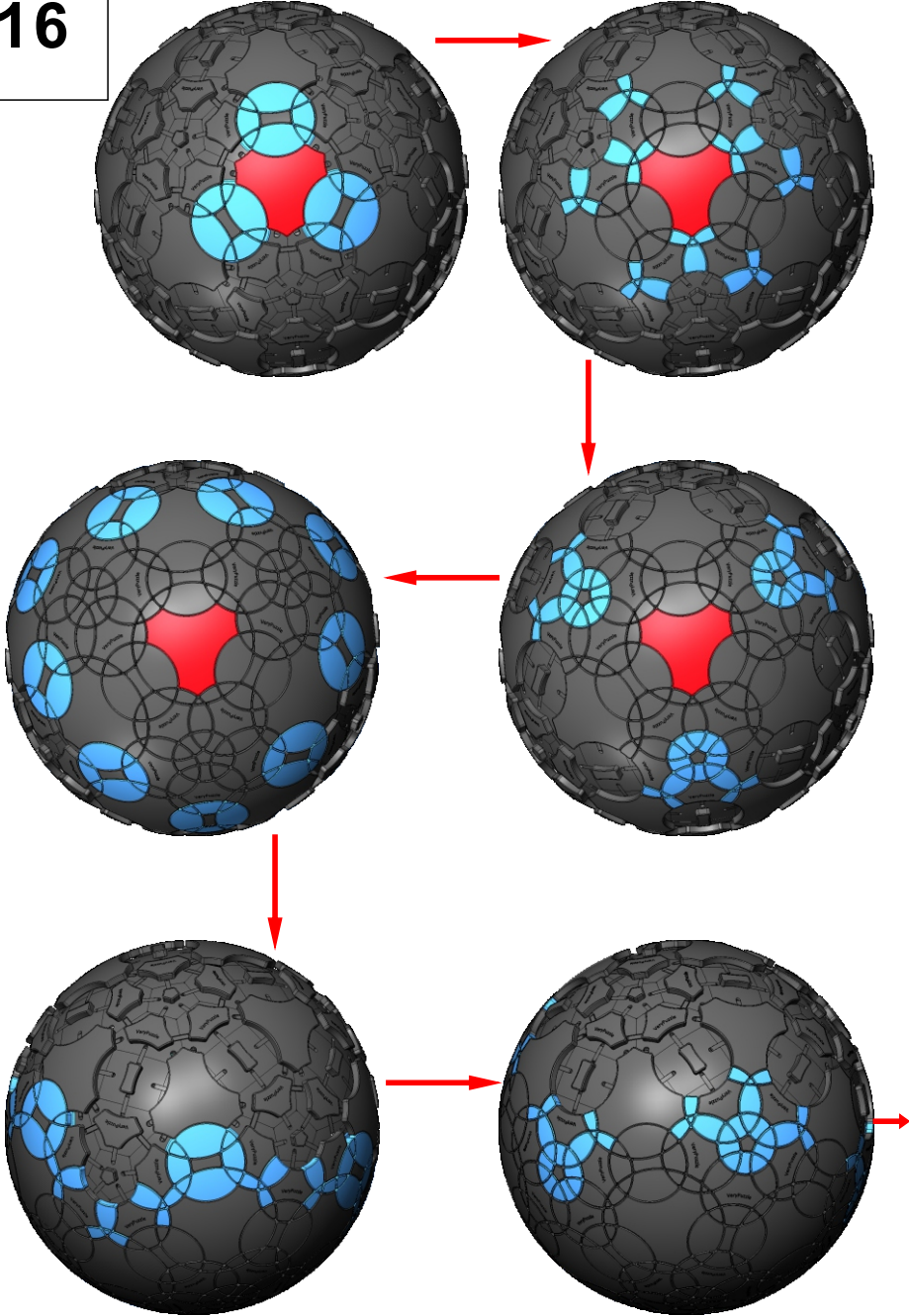


A15
60x

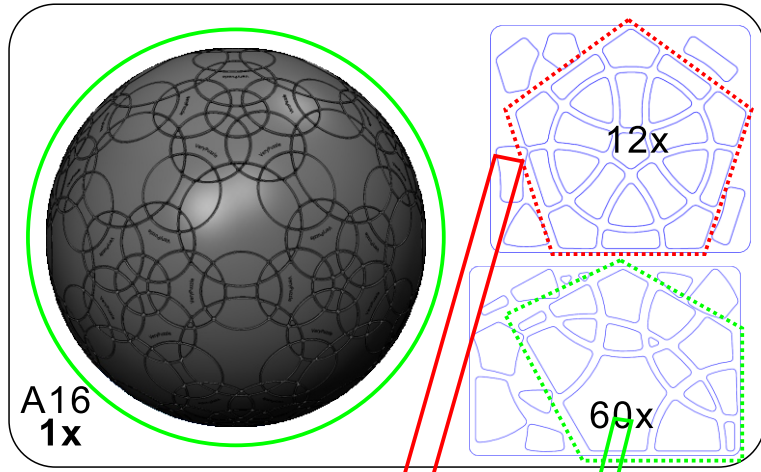


A13
60x

16



17

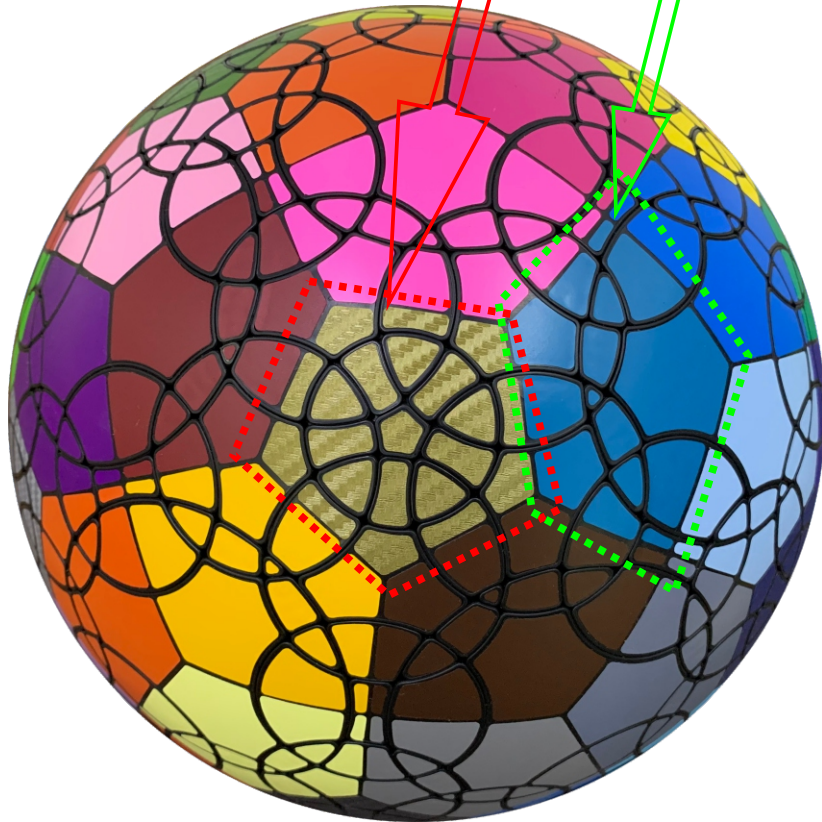


A16
1x

12x

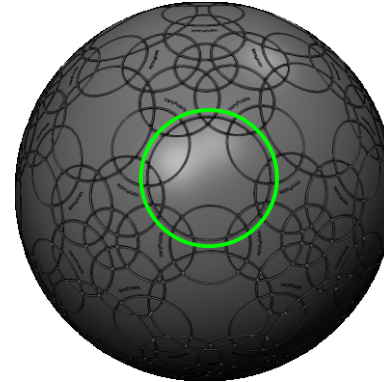
60x

Clean part surface
before applying stickers

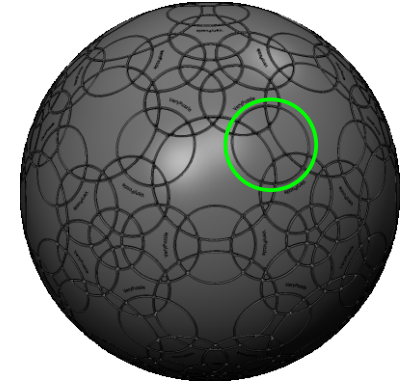


18

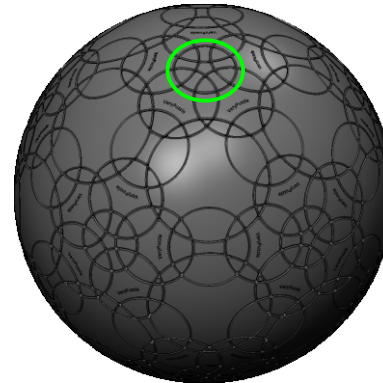
Rotation Rules



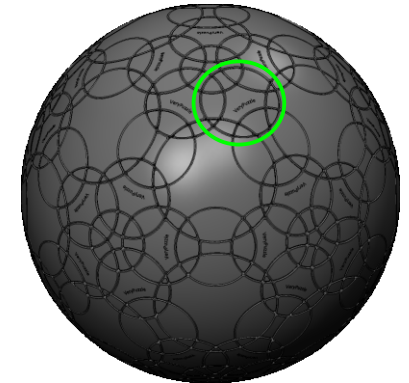
3-fold symmetry
Turns $120 \cdot n$ degrees
R6 symmetry
Turns $120 \cdot n + xxx$ degrees



2-fold symmetry
Turns $180 \cdot n$ degrees

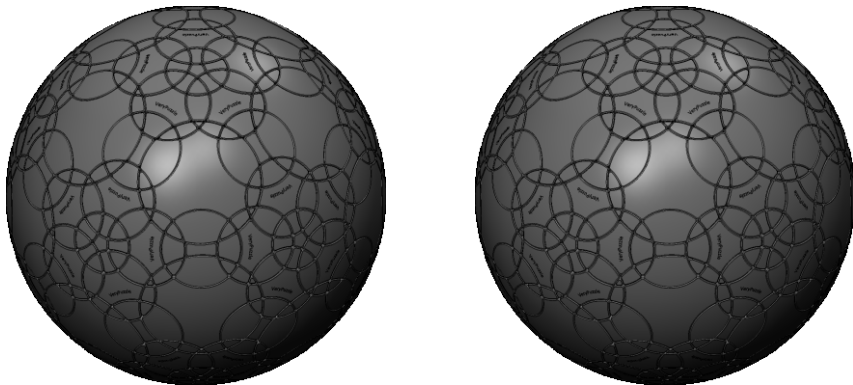
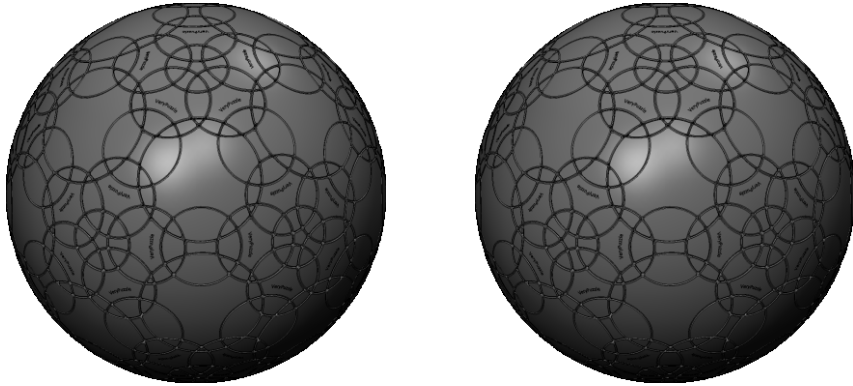


5-fold symmetry
Turns $72 \cdot n$ degrees

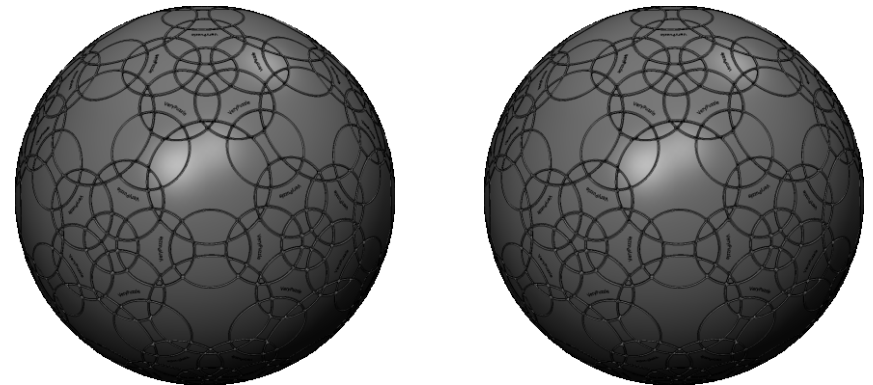
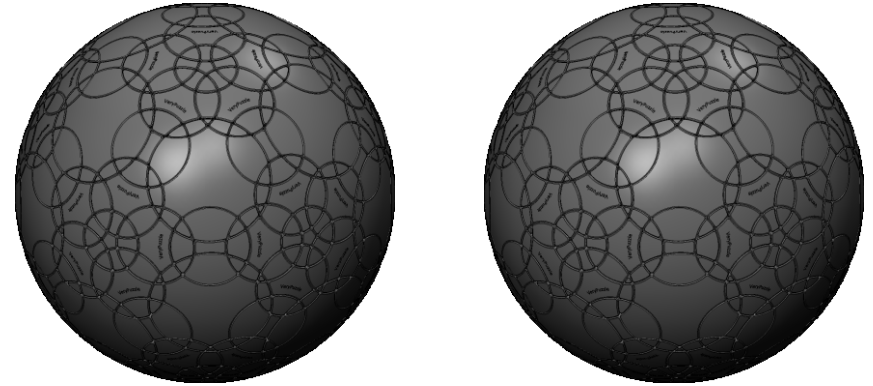


R2&R3 symmetry

Notations and Algorithms

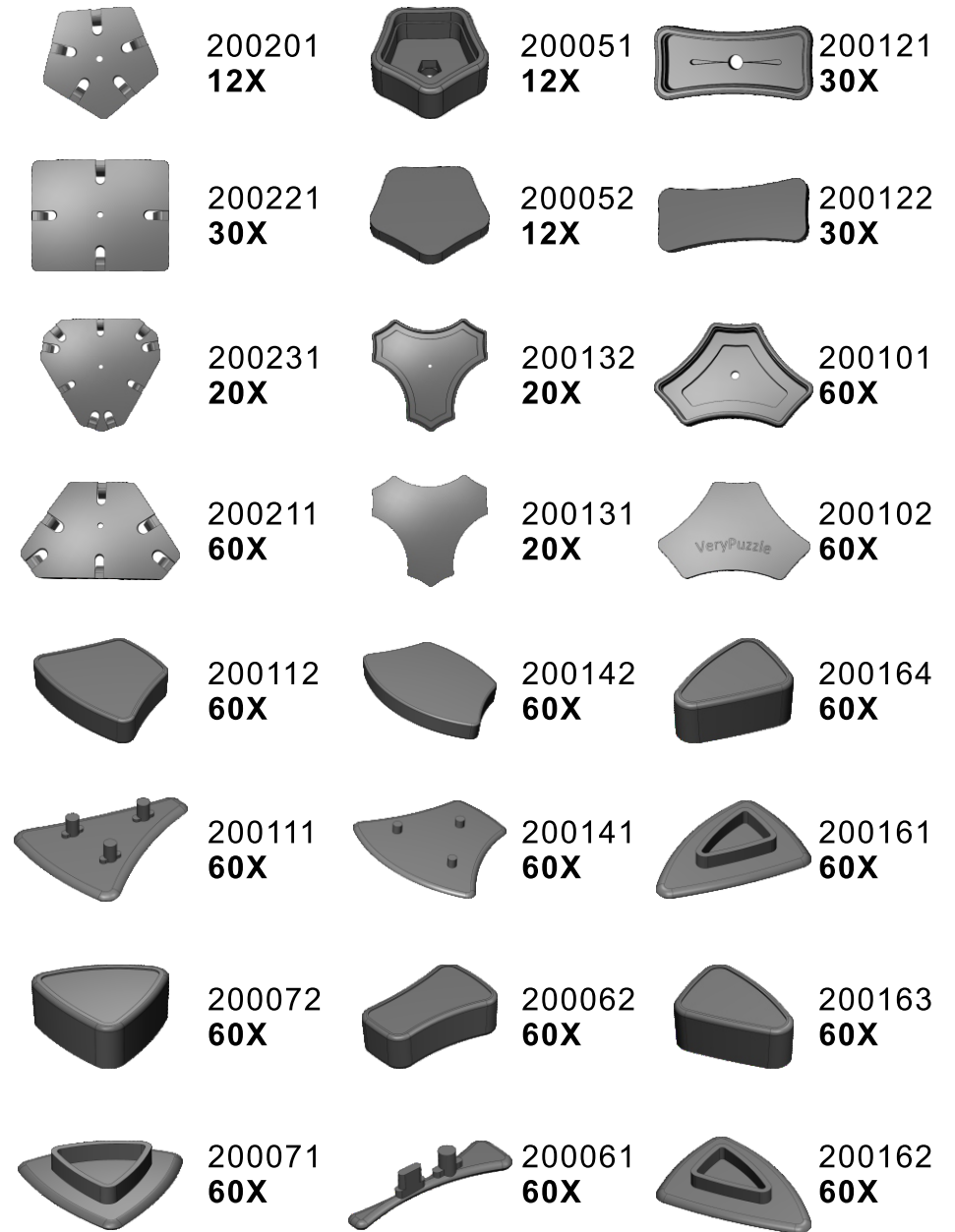


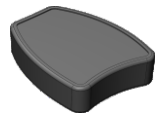
Notations and Algorithms



Product Information Card

Product Name	DIRT-DCL
Model NO.	#93
Design	VeryPuzzle Co., Ltd(HK)
Manufacturer	VeryPuzzle Co., Ltd(HK)
Year of release	2021
Maximum diameter	265 mm
Visible moving parts	722 pcs
Coloring strategy	Voronoi
Number of colors	72 colors
Sticker type	textured, uniform matte
Sticker protection	Yes
Number of sticker pieces	1152 pcs
Axis & Symmetry	D(C5)+I(C3+R6)+RT(C2)+DCL(R3+R2)
Maximum parts shared between two axes	3 parts
In-core spring	Yes
Adjustable tension	No
Technical Name	D111RT1-DCL3
Topological Print	D(9.5)I(19)RT(12.5)DCL(12.5)
Core specification	DIRT-DCL-250





200082
60X



200081
60X



200151
60X



200154
60X



200011
1X



200152
60X



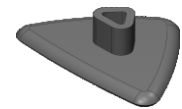
200153
60X



190621
1X



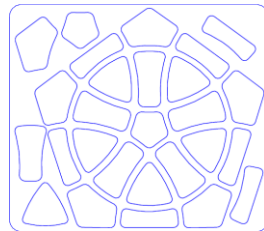
200093
200094
60X



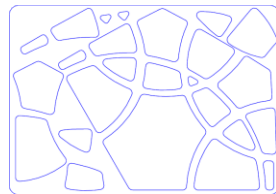
200091
200092
60X



360x 122x 122x 122x



12x



60x

Customer Service

1. support@verypuzzle.com



2. **VeryPuzzle**