

## How to tighten the screws

1. It is always recommended to tighten the screws deep enough. The tighter the screws are, the more stable a puzzle will be (and probably more stiff while making turns).

2. Always leave a little bit of radial space along the screw so that the center cap can be lifted by around 1~2mm for single layered models.

\*\*For those in-between models, like #65, #85, #88, #89, it is recommended to tighten further.

\*\*For neat multiple layered models like #61, #75, #87, tighten the screws to their full depth.

3. Rules of thumb. Tension adjustment is in general dependent on personal judgement. Different tension could result in very different feel. Start with simple models and accumulate your own sense. Use different springs, screws, nuts if you think the default set can't provide your favorite handle.

4. Previous description of sticking screws out of nuts by 1-3mm is misleading in some cases and is not anymore recommended. Reason: the height of caps varies in different models.

VeryPuzzle  
2021/08/06

# VeryPuzzle



## Rhombic Tuttminx V1.0

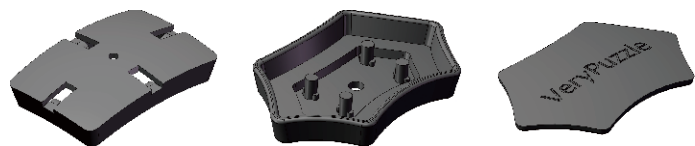
### D1RT5-M5

### #63

800+ parts  
42 axes



1



30x

30x

30x



60x



30x



30x



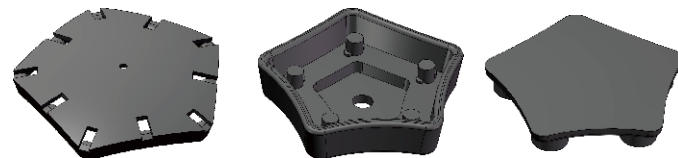
30x



A1

30x

2



12x

12x

12x



120x



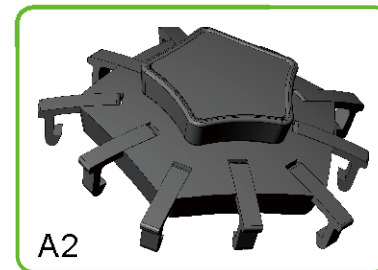
12x



12x



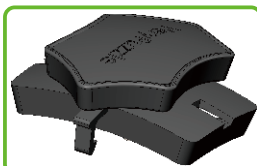
12x



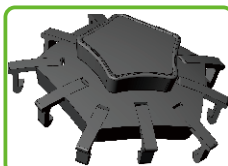
A2

12x

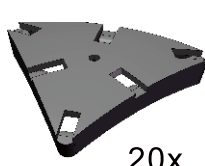
3



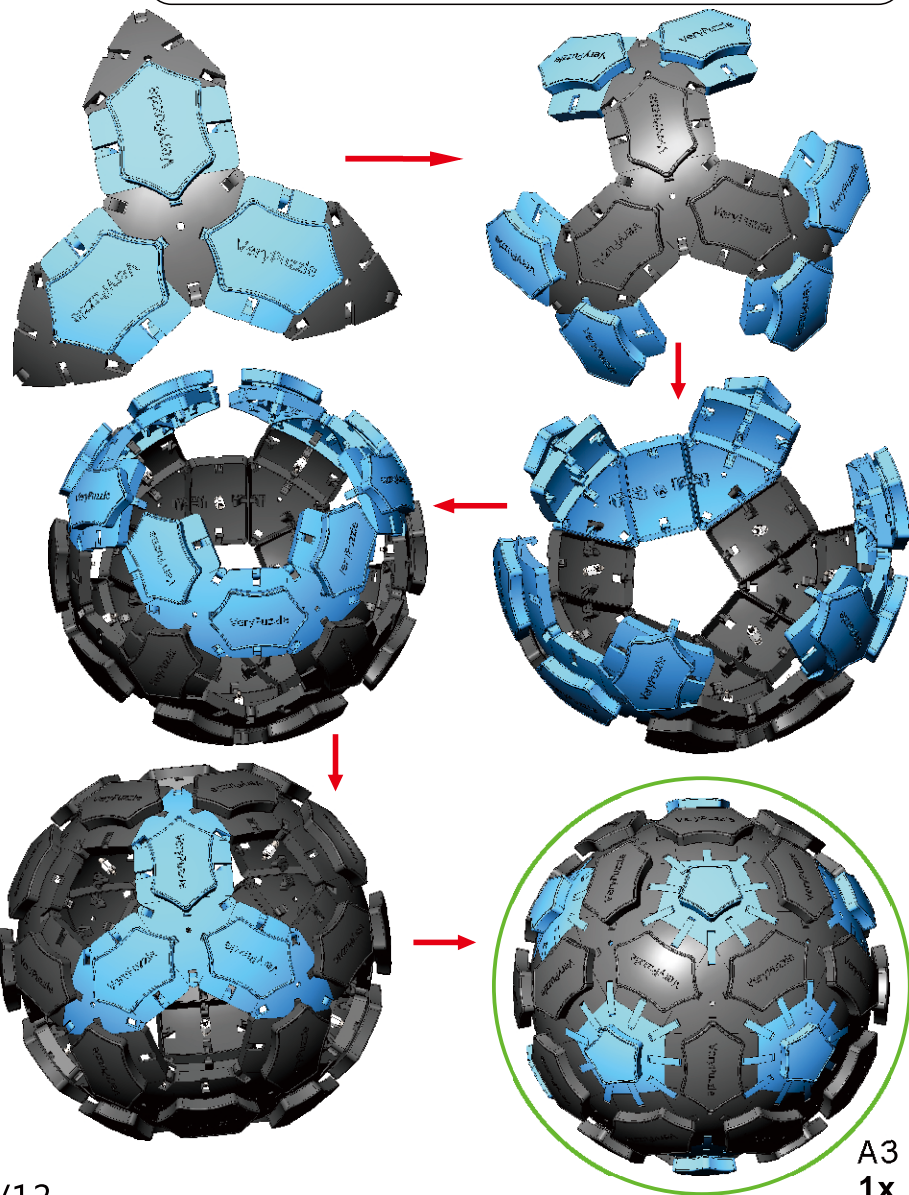
A1 30x



A2 12x



20x

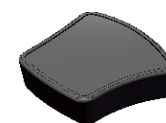


A3  
1x

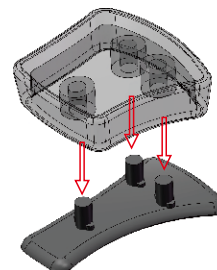
4



60x



60x

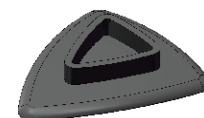


A4  
60x

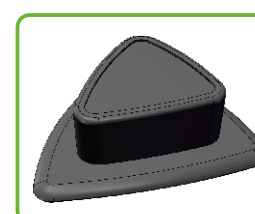
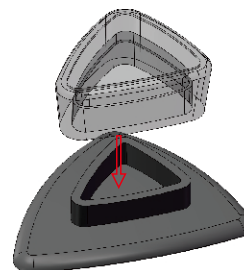
5



60x



60x

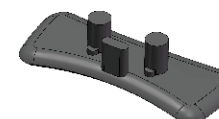


A5  
60x

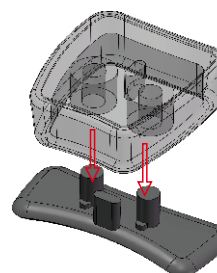
6



60x



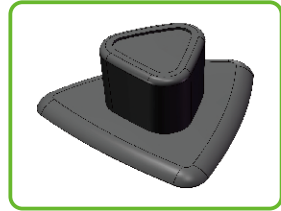
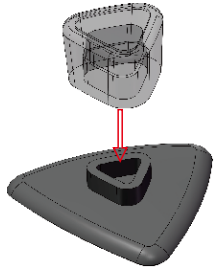
60x



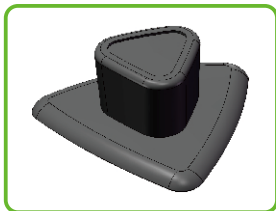
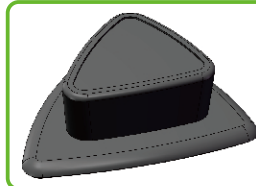
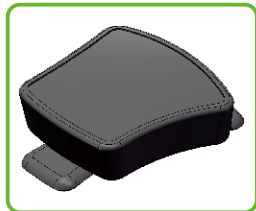
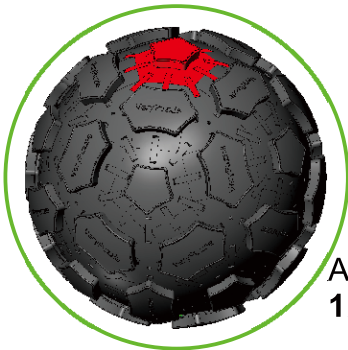
A6  
60x



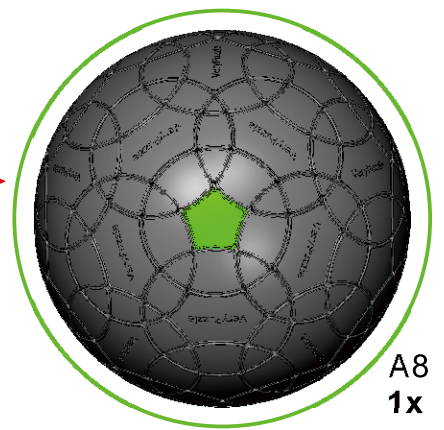
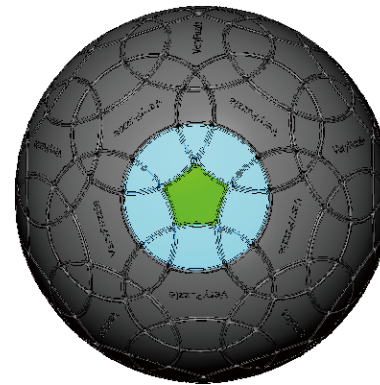
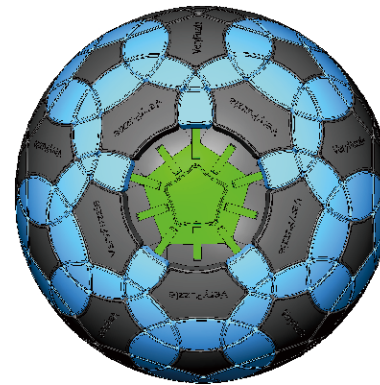
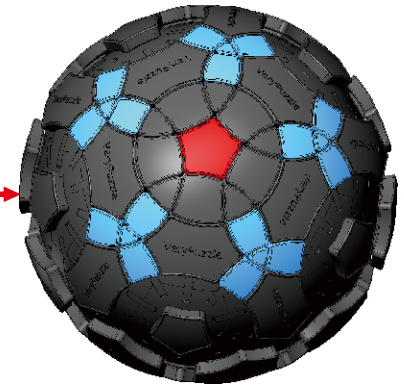
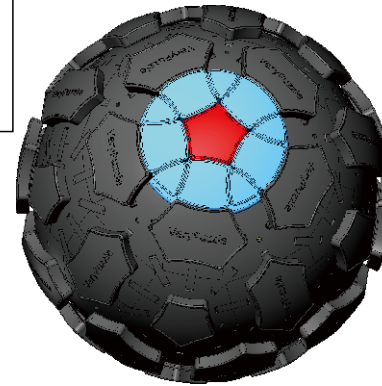
7



8

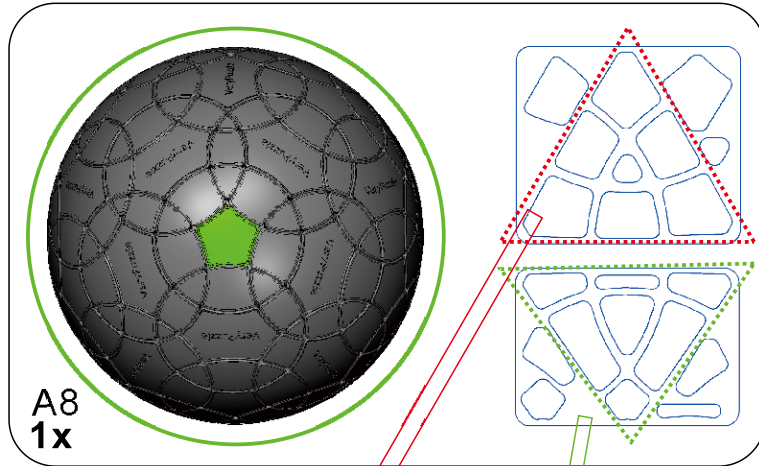


8





9



10

## Rotation Rules

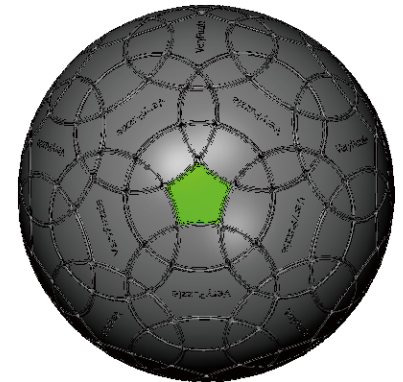
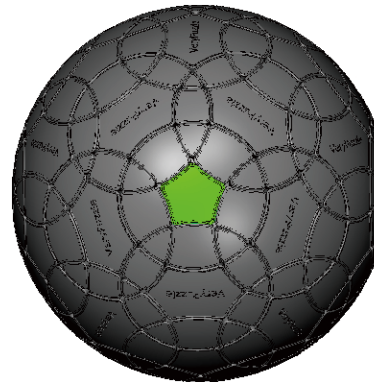


5-fold symmetry  
Turns  $72 \cdot n$  degrees

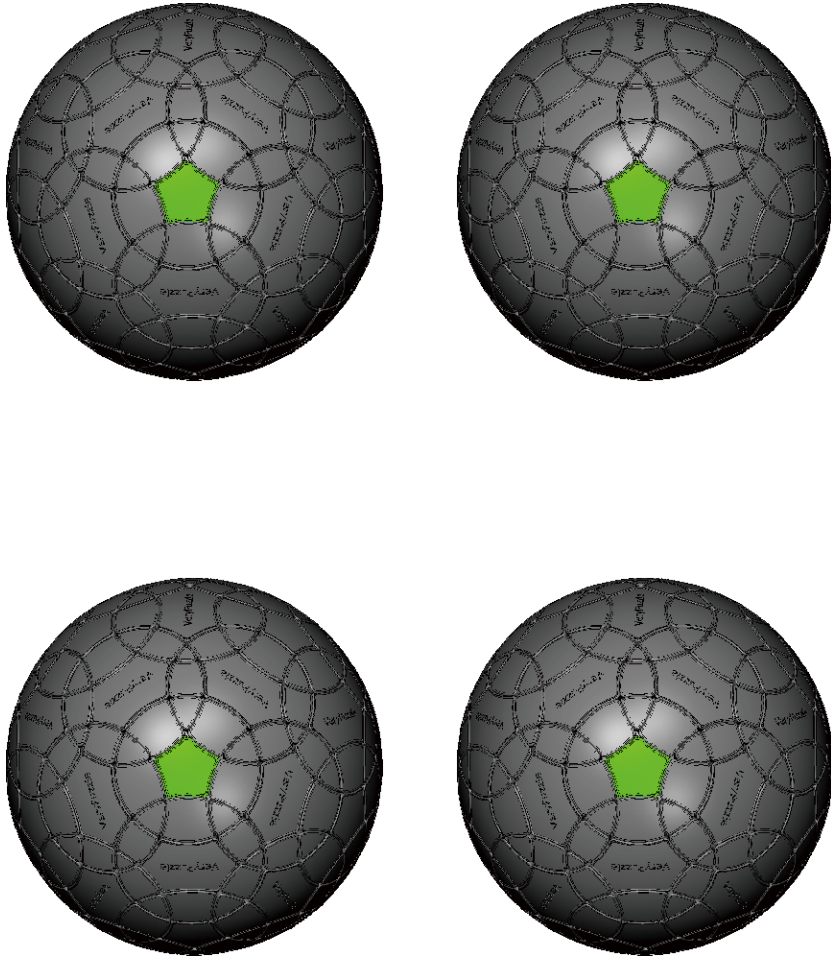


R4 symmetry  
Turns  $180 \cdot n$  degrees  
Turns  $180 \cdot n + 63.4$  degrees

## Notations and Algorithms

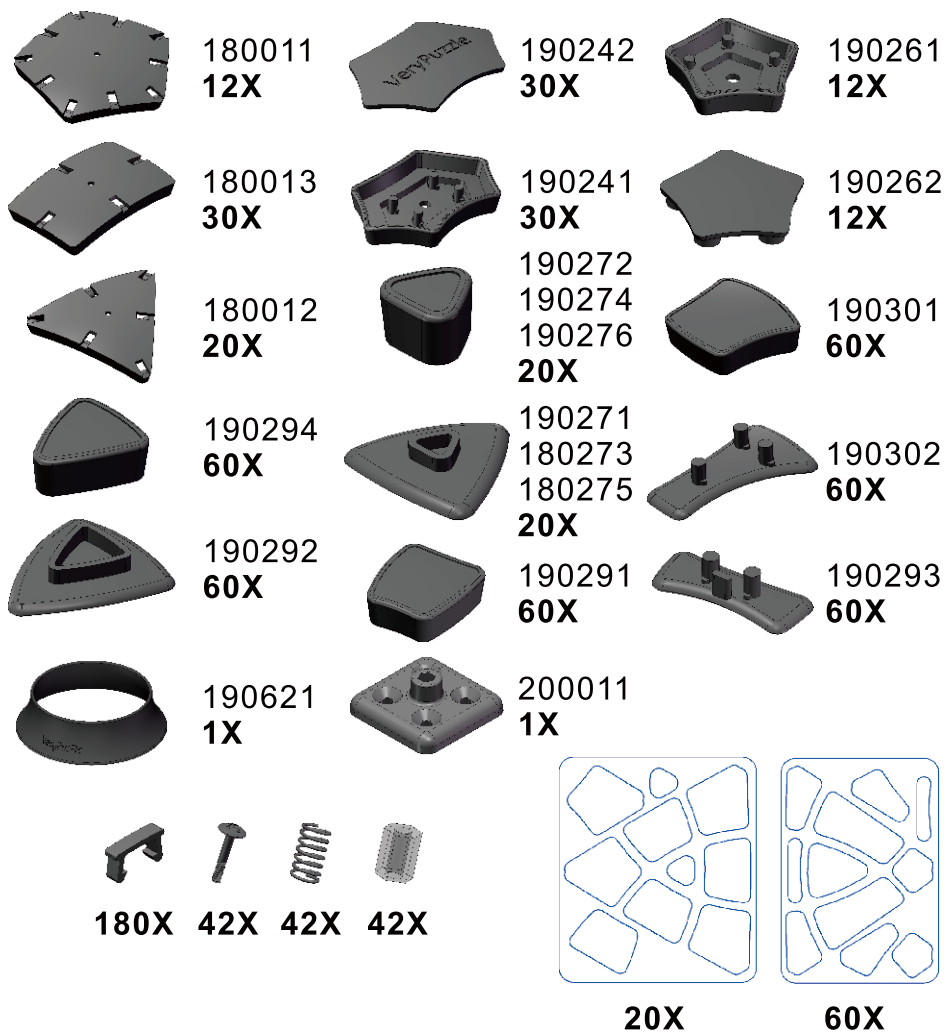


# Notations and Algorithms



## Product Information Card

<b>Product Name</b>	Rhombic Tuttminx V1.0
<b>Model NO.</b>	#63
<b>Design</b>	VeryPuzzle Co., Ltd(HK)
<b>Manufacturer</b>	VeryPuzzle Co., Ltd(HK)
<b>Year of release</b>	2019
<b>Maximum diameter</b>	145 mm
<b>Visible moving parts</b>	242 pcs
<b>Assembly challenge</b>	★★★★☆
<b>Solving challenge</b>	★★★★☆
<b>Stickering strategy</b>	Voronoi
<b>Sticker material</b>	Textured, flare, uniform
<b>Color scheme</b>	80 colors
<b>Sticker protection</b>	Yes
<b>Number of stickers</b>	560 pcs
<b>Axis &amp; Symmetry</b>	D(C5)+RT(R4)
<b>In-core spring</b>	Yes
<b>Adjustable tension</b>	No
<b>Technical Name</b>	D1RT5-M5
<b>Topological Print</b>	D23RT24
<b>Core specification</b>	DIRT130



## Customer Service

1. [support@verypuzzle.com](mailto:support@verypuzzle.com)



VeryPuzzle