

How to tighten the screws

1. It is always recommended to tighten the screws deep enough. The tighter the screws are, the more stable a puzzle will be (and probably more stiff while making turns).

2. Always leave a little bit of radial space along the screw so that the center cap can be lifted by around 1~2mm for single layered models.

****For those in-between models, like #65, #85, #88, #89, it is recommended to tighten further.**

****For neat multiple layered models like #61, #75, #87, tighten the screws to their full depth.**

3. Rules of thumb. Tension adjustment is in general dependent on personal judgement. Different tension could result in very different feel. Start with simple models and accumulate your own sense. Use different springs, screws, nuts if you think the default set can't provide your favorite handle.

4. Previous description of sticking screws out of nuts by 1-3mm is misleading in some cases and is not anymore recommended. Reason: the height of caps varies in different models.

VeryPuzzle
2021/08/06

VeryPuzzle



Icosahedron V1.0

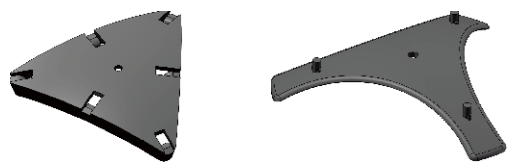
I3

#66

400+ parts
20 axes



1



20x

20x



60x



20x



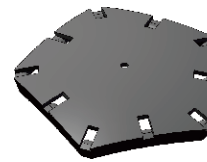
20x



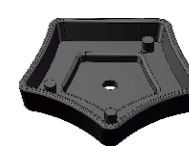
20x



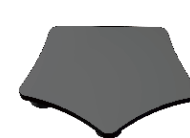
2



12x



12x



12x



120x



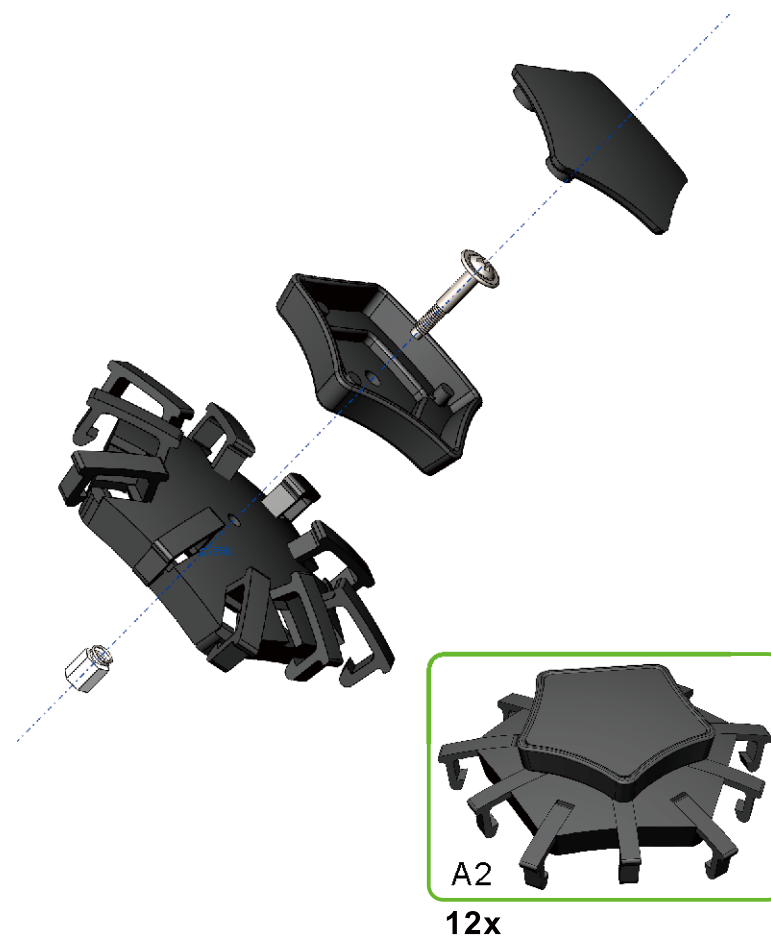
12x



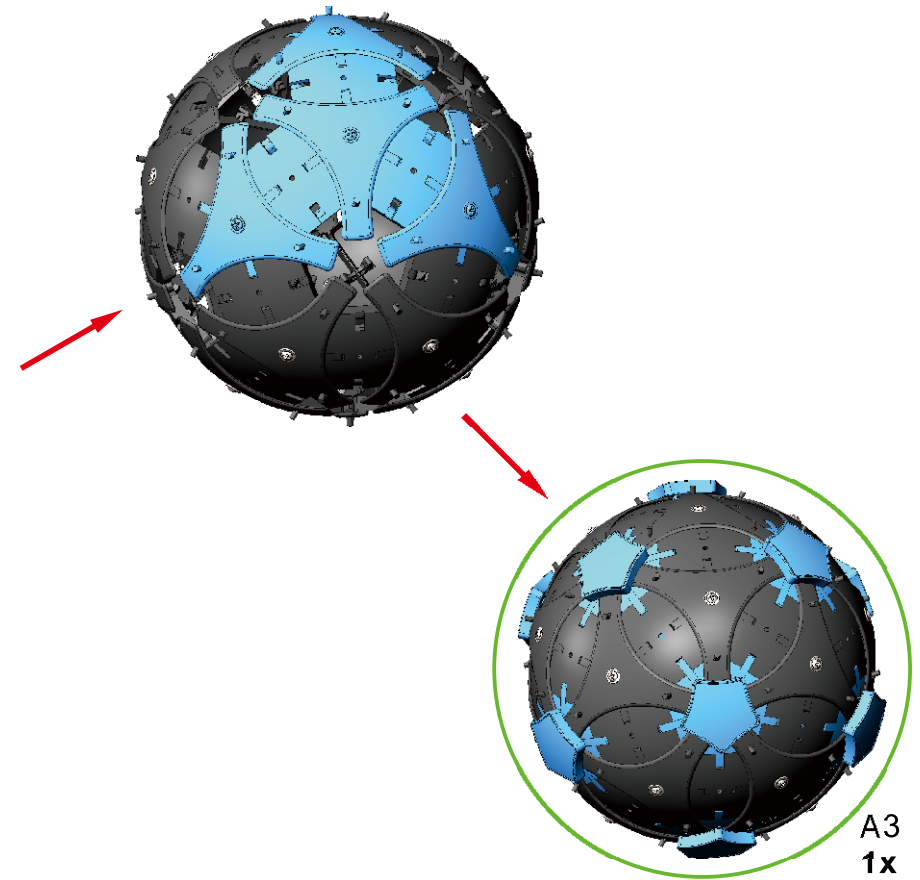
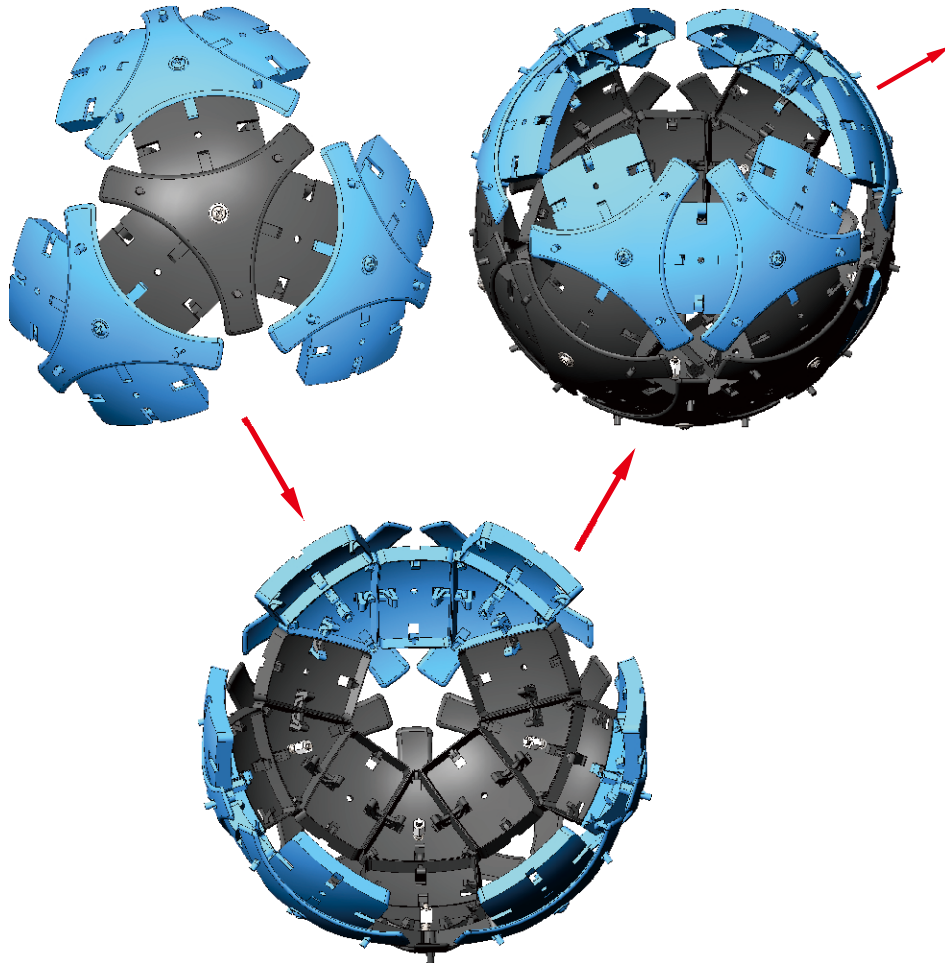
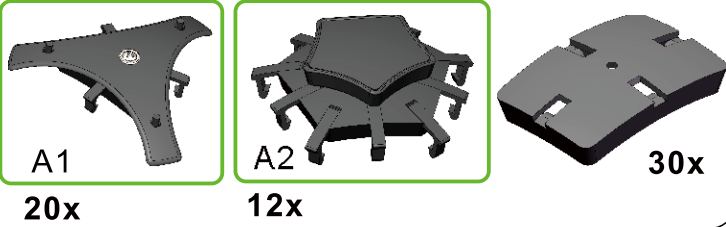
12x



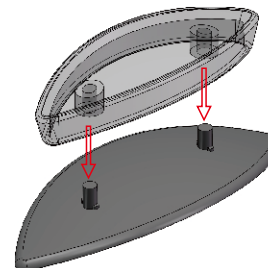
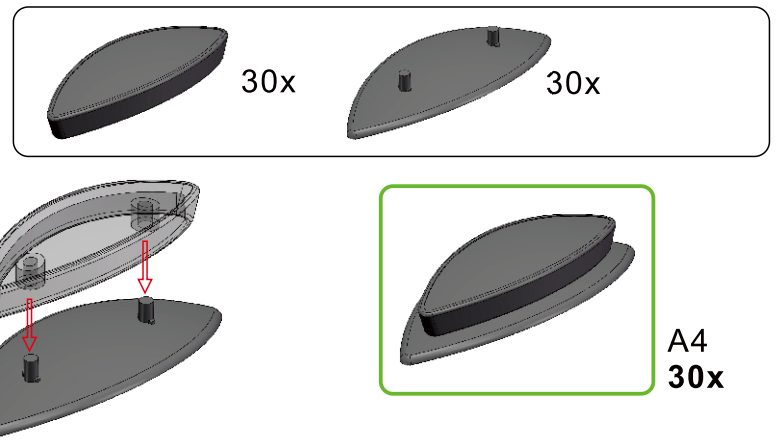
12x



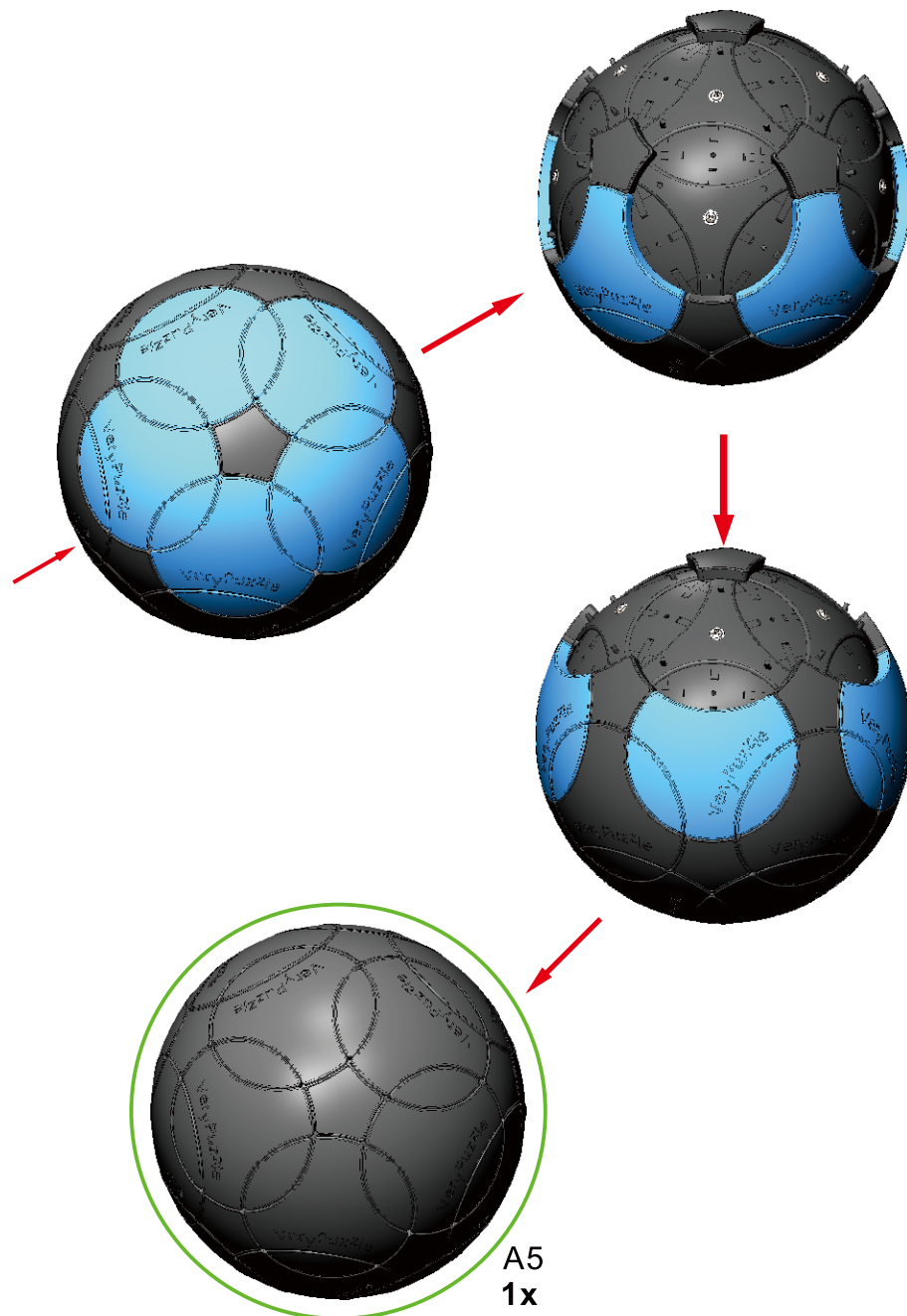
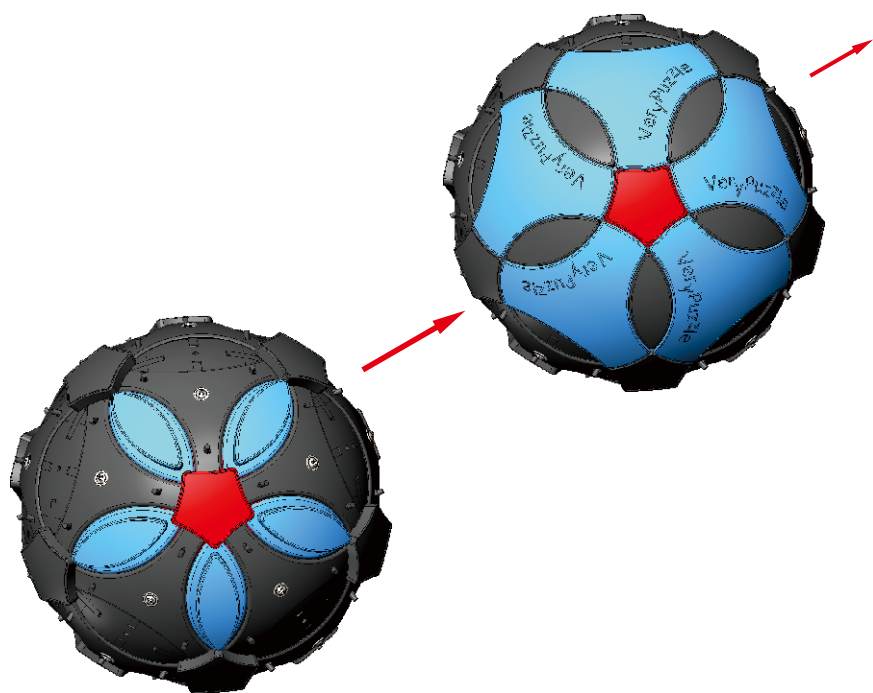
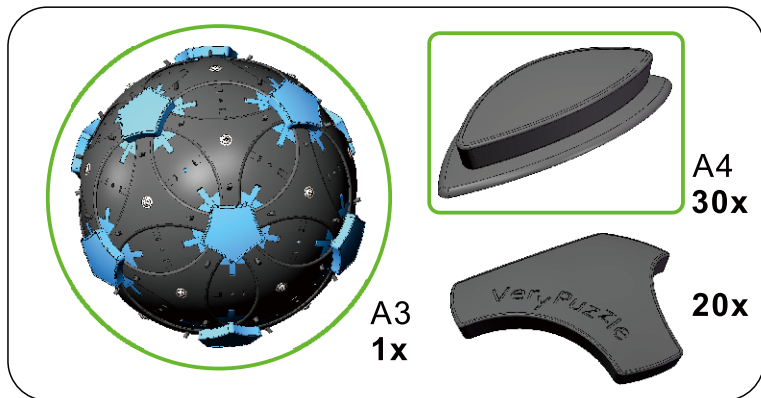
3



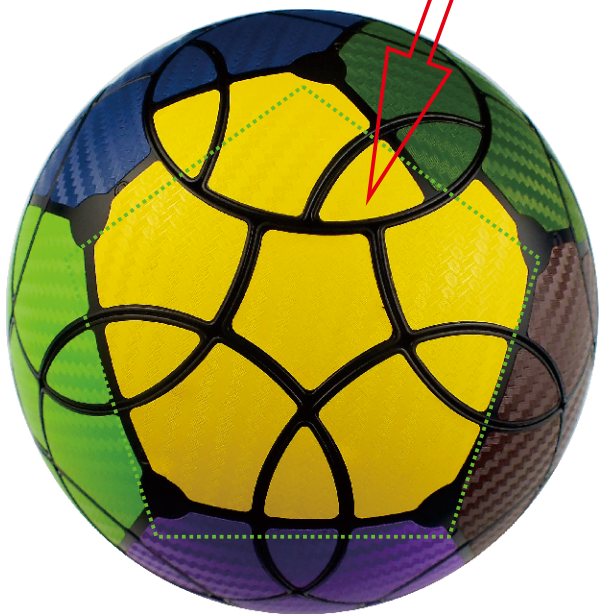
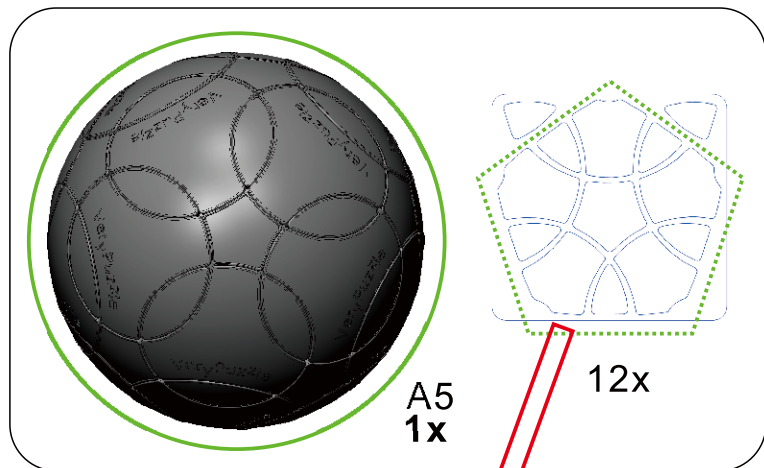
4



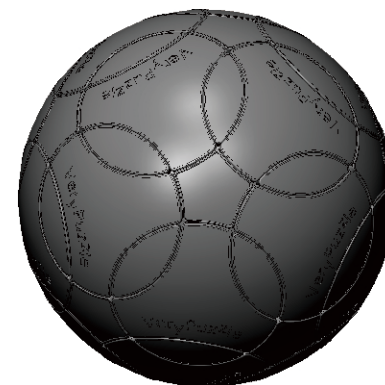
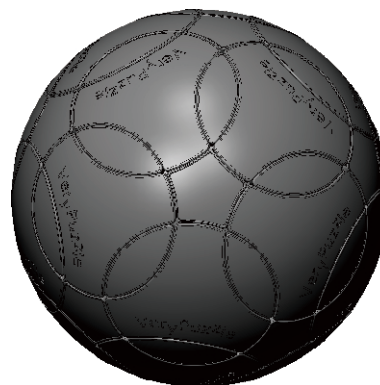
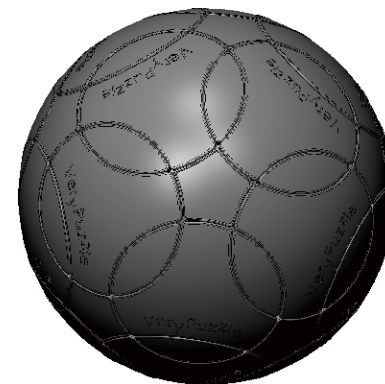
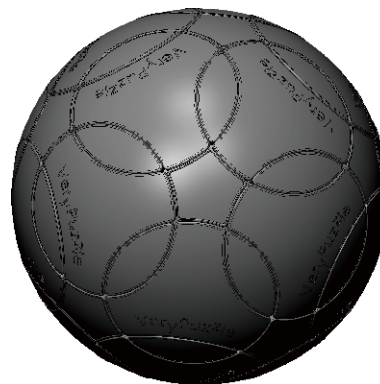
5



6

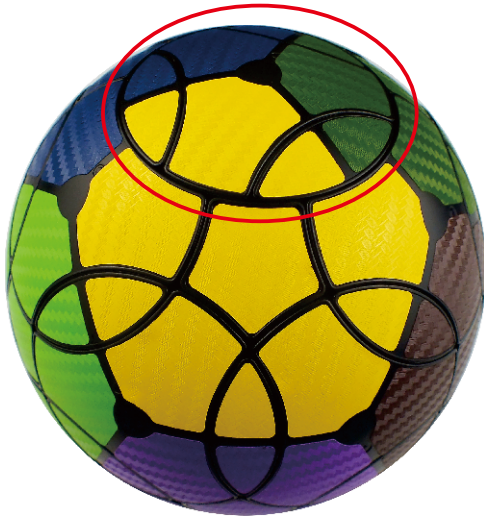


Notations and Algorithms



7

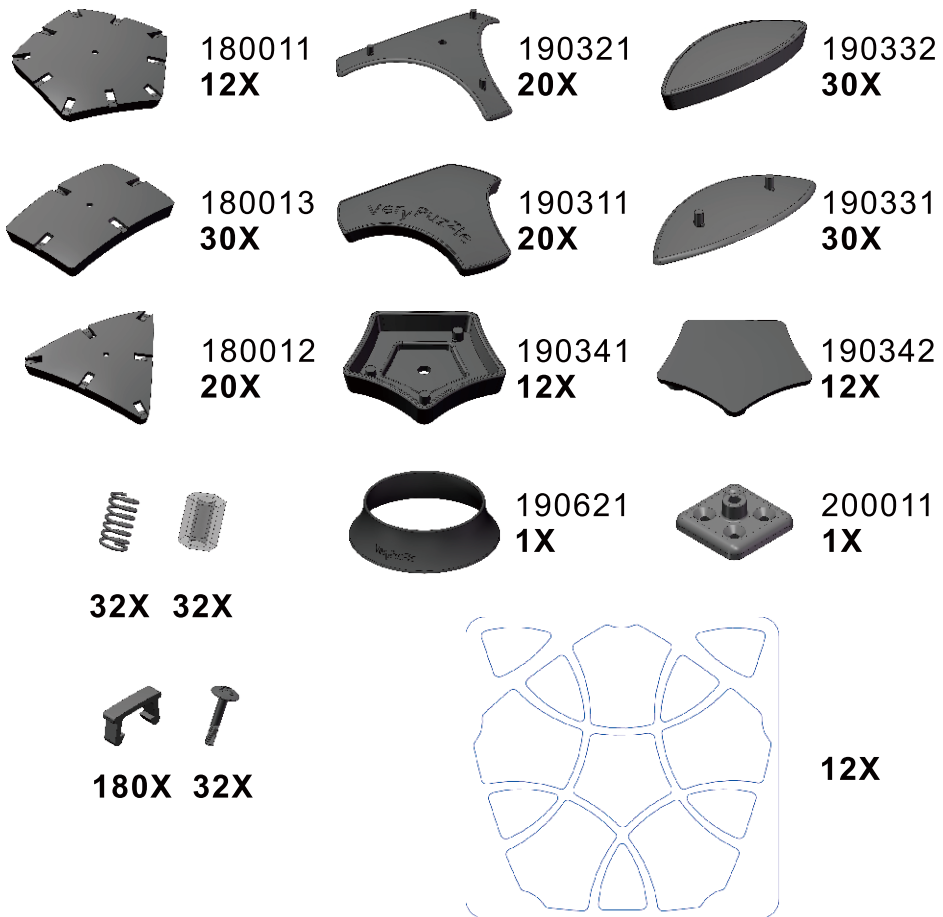
Rotation Rules



3-fold symmetry
Turns $120 \times n$ degrees

Product Information Card

Product Name	Icosahedron V1.0
Model NO.	#66
Design	VeryPuzzle Co., Ltd(HK)
Manufacturer	VeryPuzzle Co., Ltd(HK)
Year of release	2019
Maximum diameter	145 mm
Visible moving parts	62 pcs
Assembly challenge	★★★★☆☆☆☆
Solving challenge	★★☆☆☆☆☆☆
Stickering strategy	Voronoi
Sticker material	Textured
Color scheme	12 colors
Sticker protection	Yes
Number of stickers	121 pcs
Axis & Symmetry	I(C3)
In-core spring	Yes
Adjustable tension	No
Technical Name	I3
Topological Print	I27
Core specification	DIRT130



Customer Service

1. support@verypuzzle.com



VeryPuzzle