

How to tighten the screws

1. It is always recommended to tighten the screws deep enough. The tighter the screws are, the more stable a puzzle will be (and probably more stiff while making turns).

2. Always leave a little bit of radial space along the screw so that the center cap can be lifted by around 1~2mm for single layered models.

****For those in-between models, like #65, #85, #88, #89, it is recommended to tighten further.**

****For neat multiple layered models like #61, #75, #87, tighten the screws to their full depth.**

3. Rules of thumb. Tension adjustment is in general dependent on personal judgement. Different tension could result in very different feel. Start with simple models and accumulate your own sense. Use different springs, screws, nuts if you think the default set can't provide your favorite handle.

4. Previous description of sticking screws out of nuts by 1-3mm is misleading in some cases and is not anymore recommended. Reason: the height of caps varies in different models.

VeryPuzzle
2021/08/06

VeryPuzzle



Icosahedron Chaotic

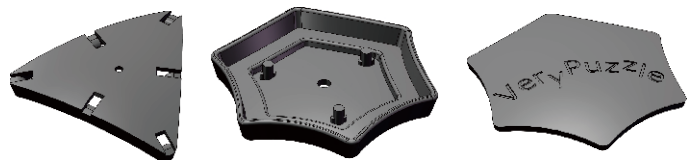
I3-E1

#67

700+ parts
20 axes



1



20x

20x

20x



120x



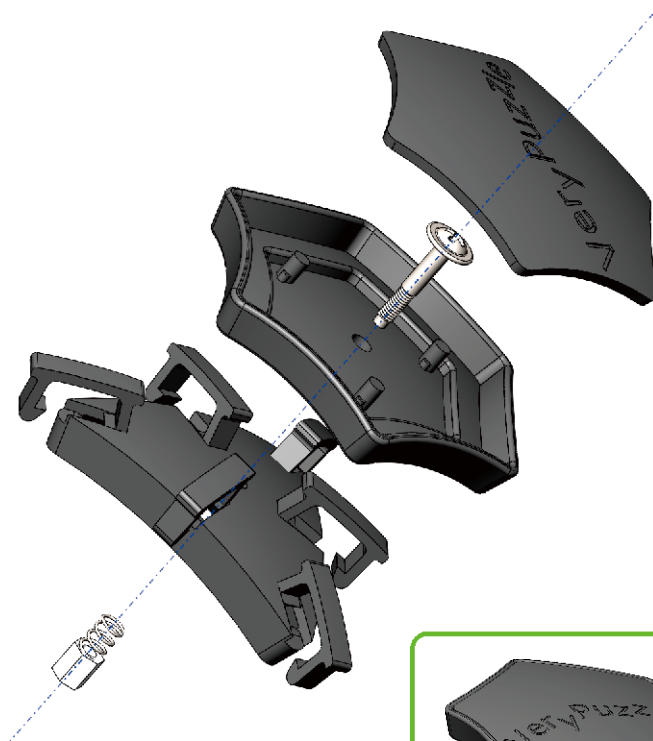
20x



20x



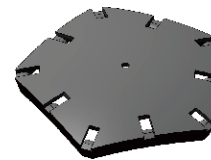
20x



A1

20x

2



12x

12x

12x



60x



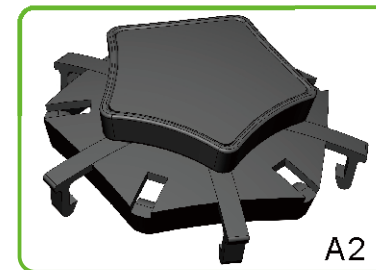
12x



12x



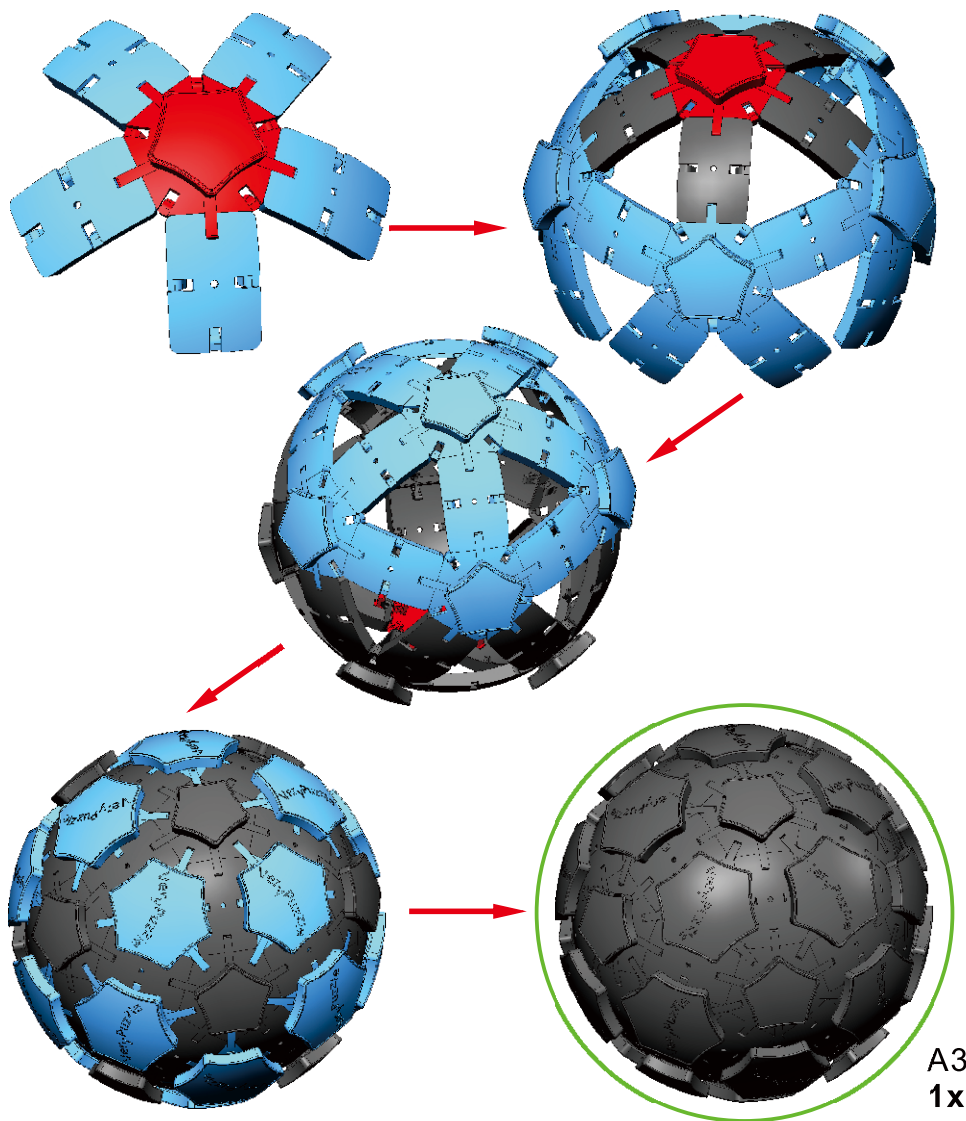
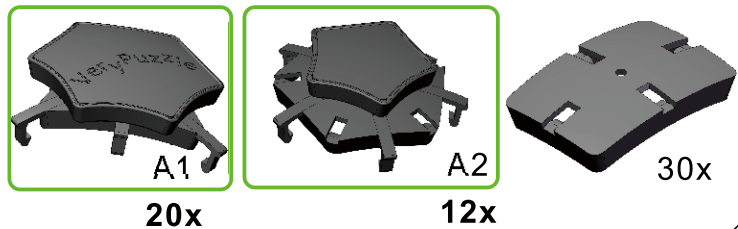
12x



A2

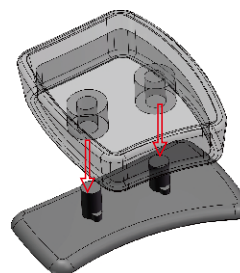
12x

3

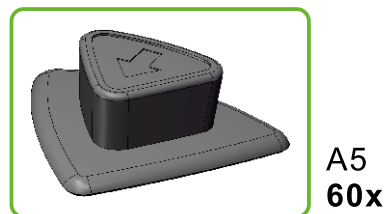
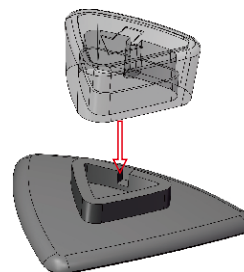


A3
1x

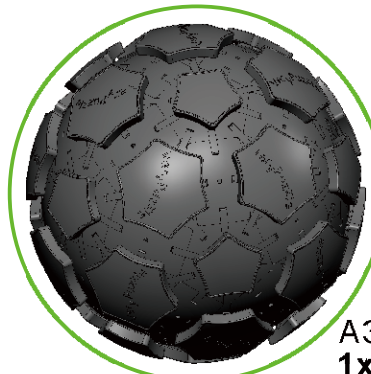
4



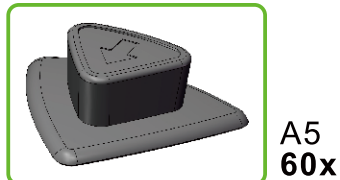
5



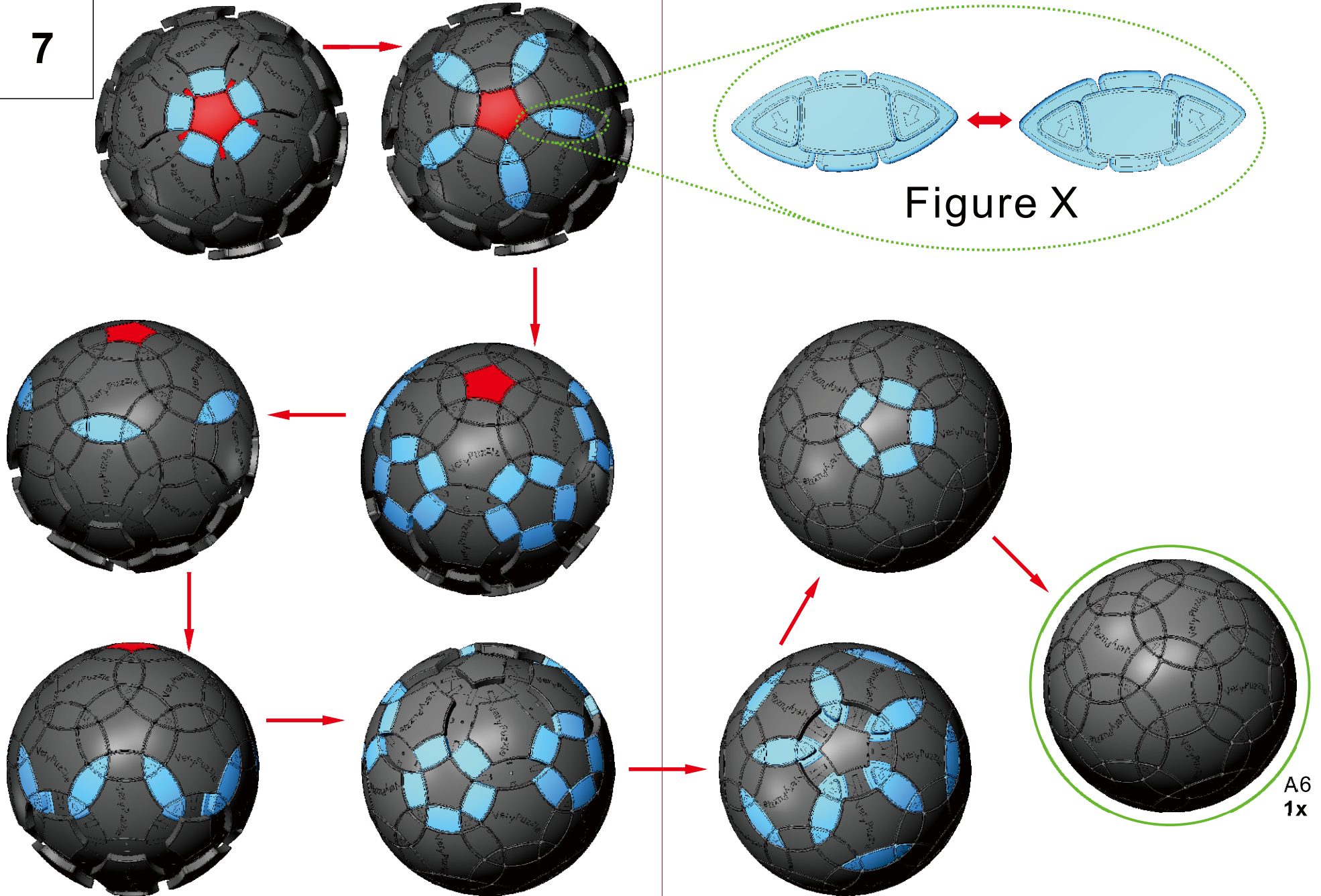
6



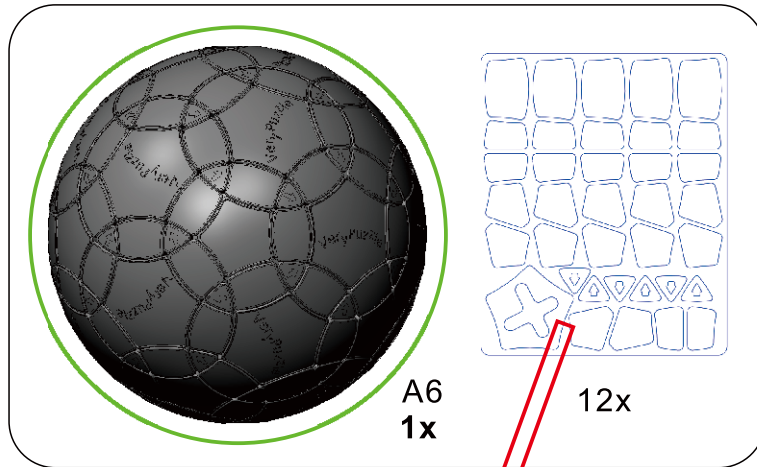
A3
1x



7



8



9

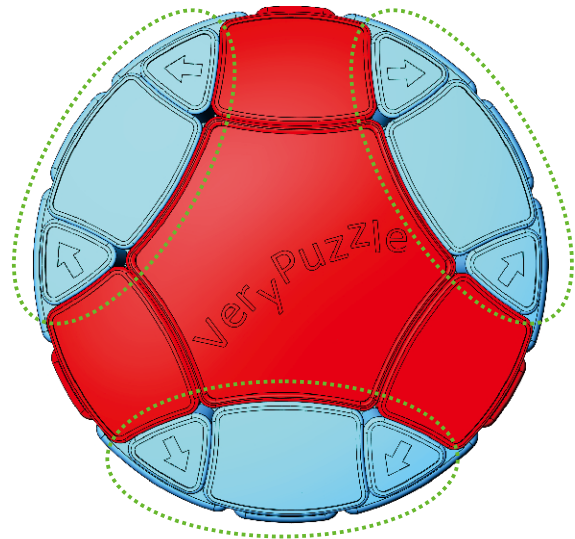
Rotation Rules



6-fold symmetry.
A hexagonal face can turn $60 \cdot n$ degrees, if and only if the edge patterns meet conditions below.

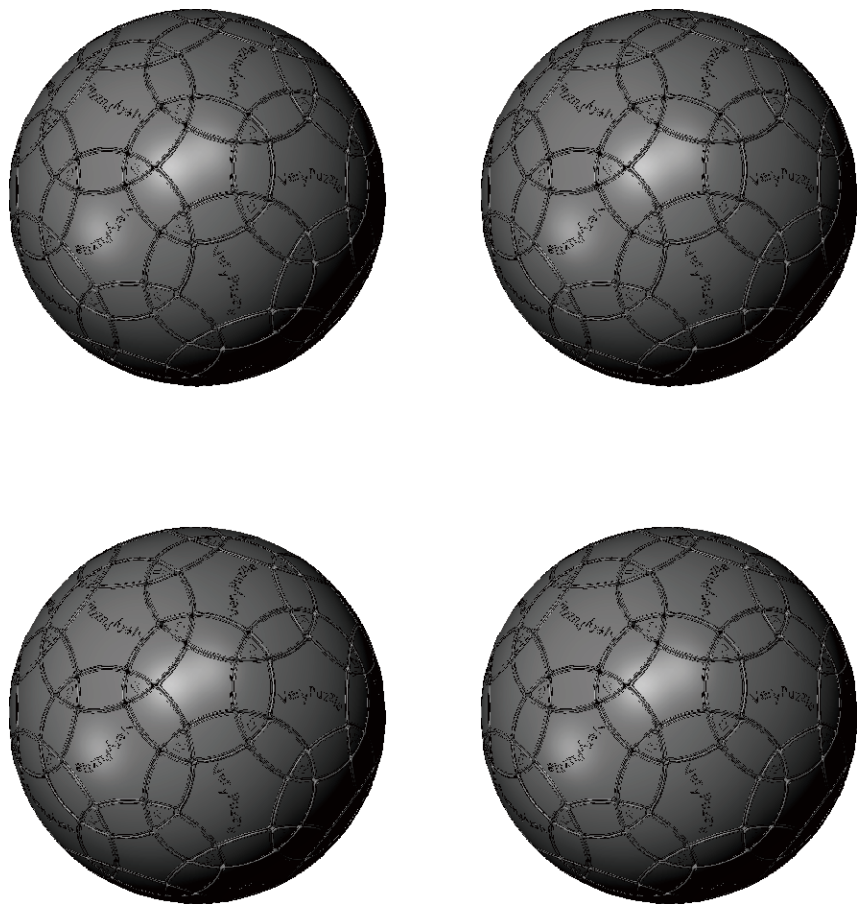
Pentagonal faces are not supposed to rotate.

No fudging moves allowed.



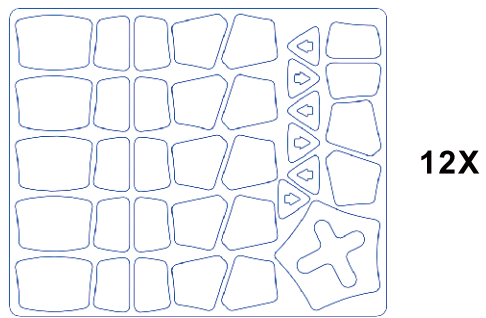
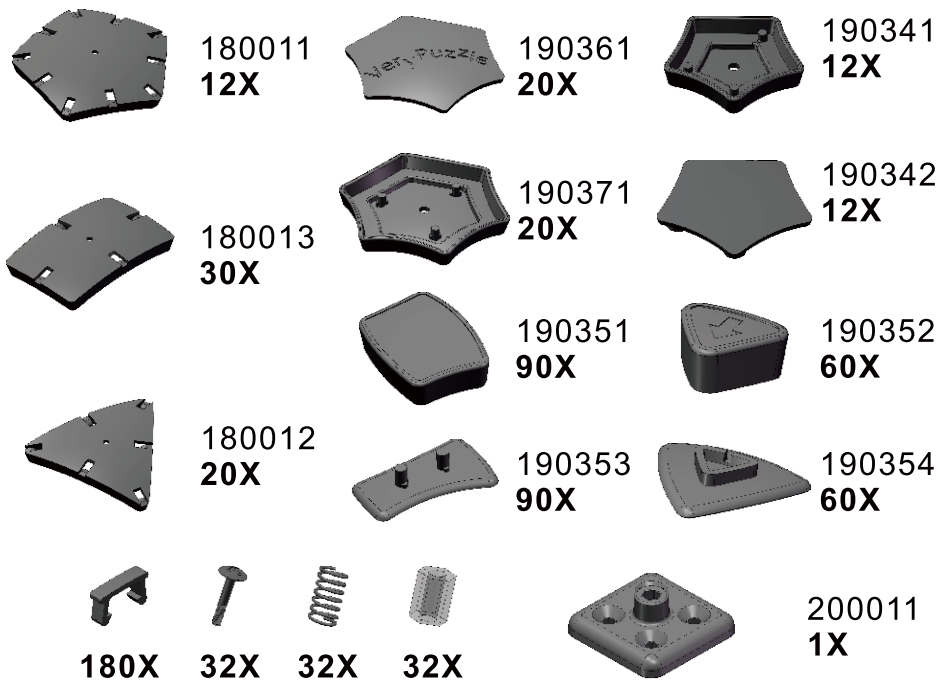
1. Ref. Figure X for two possible configurations of blue parts.
2. It doesn't matter how hexagonal center part is oriented.
3. Provided all parts are correctly assembled. A flipped red edge in the above setting will result in an illegal assembly.

Notations and Algorithms



Product Information Card

Product Name	Icosahedron Chaotic
Model NO.	#67
Design	VeryPuzzle Co., Ltd(HK)
Manufacturer	VeryPuzzle Co., Ltd(HK)
Year of release	2019
Maximum diameter	145 mm
Visible moving parts	182 pcs
Assembly challenge	★★★★☆☆☆☆
Solving challenge	★★★★☆☆☆☆
Stickering strategy	Voronoi
Sticker material	Uniform
Color scheme	12 colors
Sticker protection	Yes
Number of stickers	312 pcs
Axis & Symmetry	I(C6)
In-core spring	Yes
Adjustable tension	No
Technical Name	I3-E1
Topological Print	I27
Core specification	DIRT130



Customer Service

1. support@verypuzzle.com



VeryPuzzle