

How to tighten the screws

1. It is always recommended to tighten the screws deep enough. The tighter the screws are, the more stable a puzzle will be (and probably more stiff while making turns).
2. Always leave a little bit of radial space along the screw so that the center cap can be lifted by around 1~2mm for single layered models.
**For those in-between models, like #65, #85, #88, #89, it is recommended to tighten further.
**For neat multiple layered models like #61, #75, #87, tighten the screws to their full depth.
3. Rules of thumb. Tension adjustment is in general dependent on personal judgement. Different tension could result in very different feel. Start with simple models and accumulate your own sense. Use different springs, screws, nuts if you think the default set can't provide your favorite handle.
4. Previous description of sticking screws out of nuts by 1-3mm is misleading in some cases and is not anymore recommended. Reason: the height of caps varies in different models.

VeryPuzzle
2021/08/06

VeryPuzzle



Spherical Tuttminx V1.0

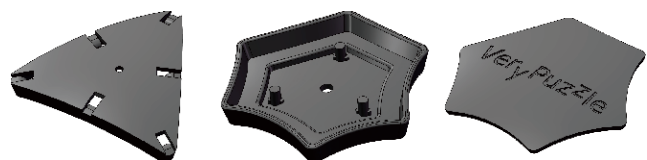
D113-M5

#69

700+ parts
32 axes



1



20x

20x

20x



120x

20x

20x

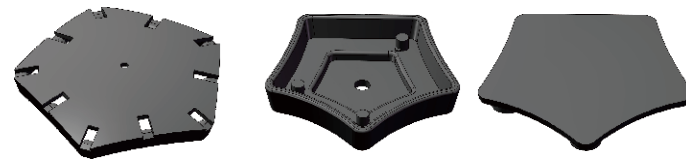
20x



A1

20x

2



12x

12x

12x

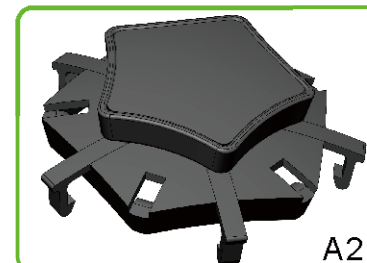


60x

12x

12x

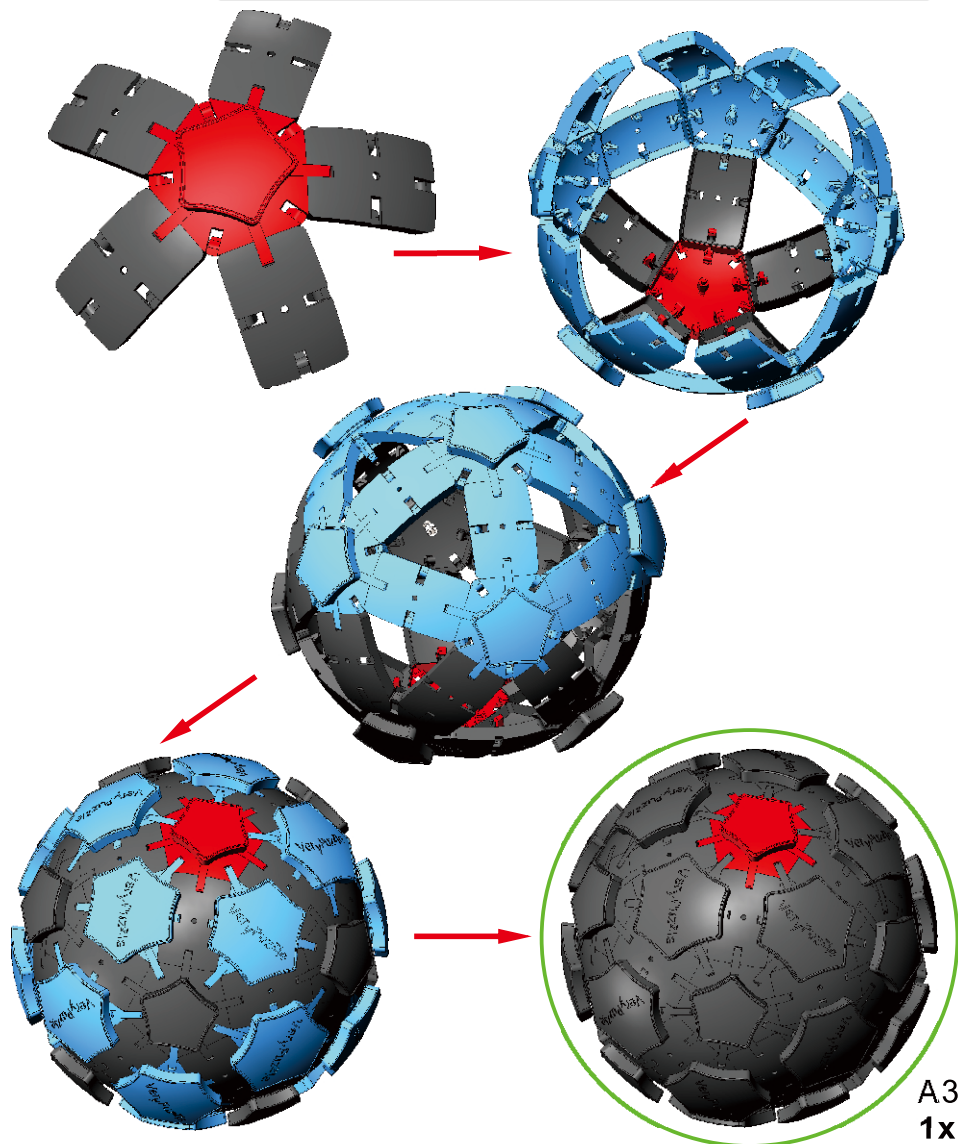
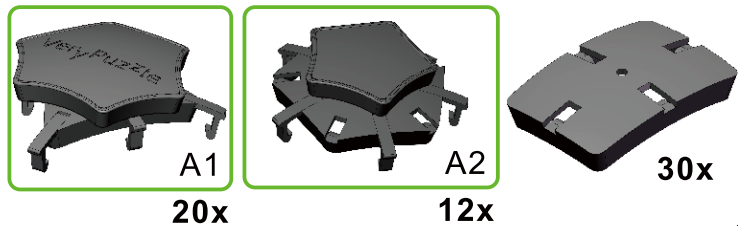
12x



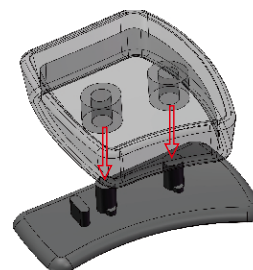
A2

12x

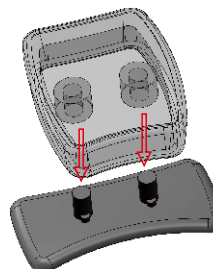
3



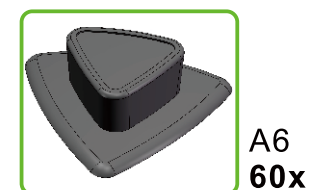
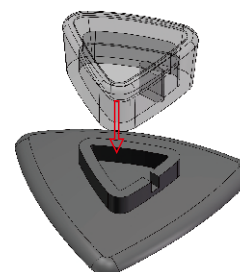
4



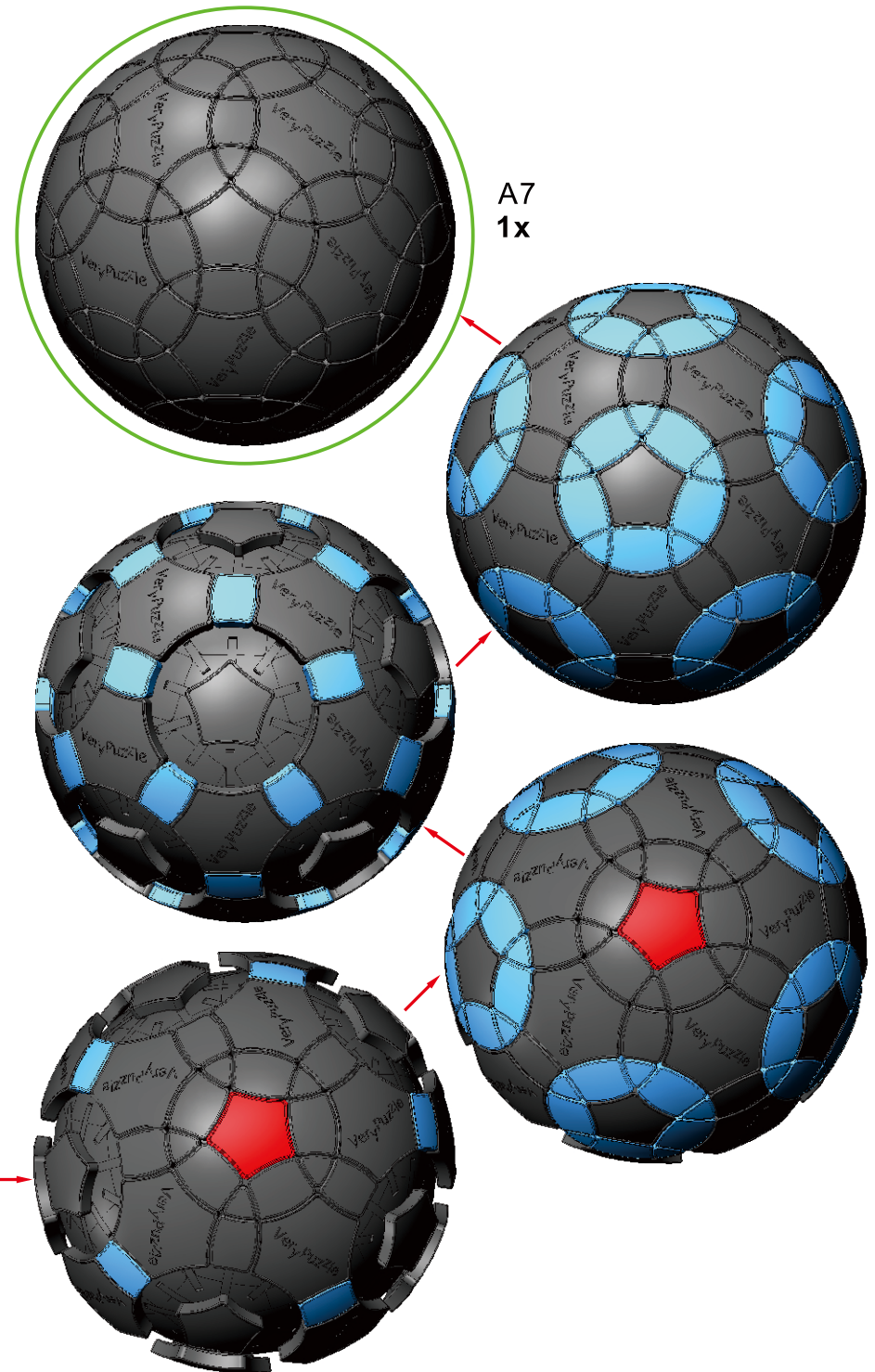
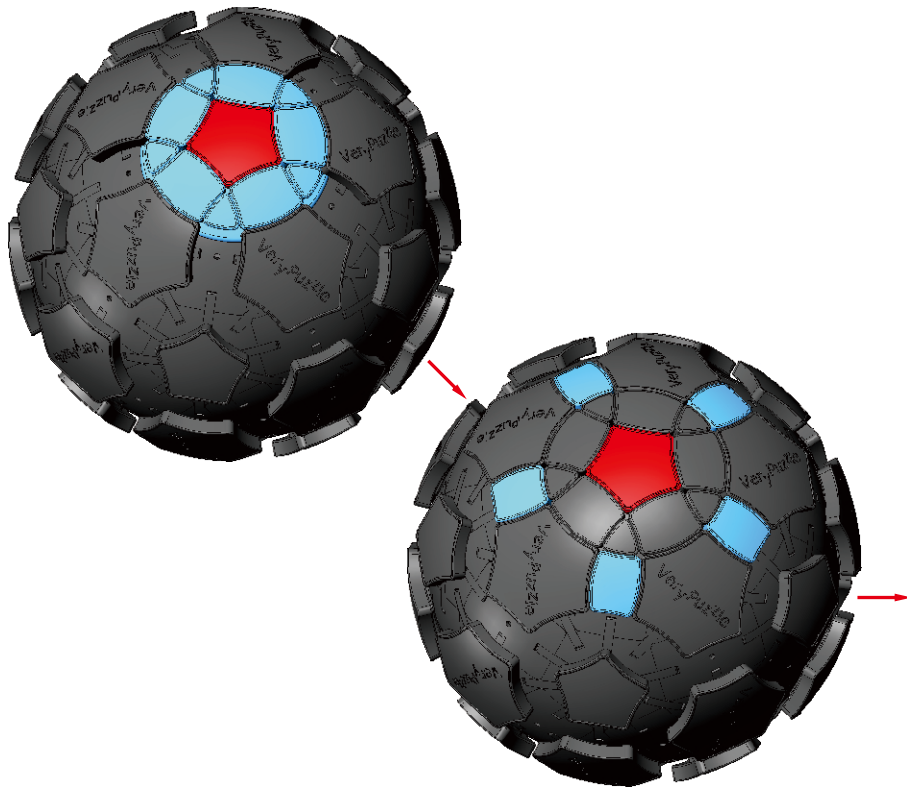
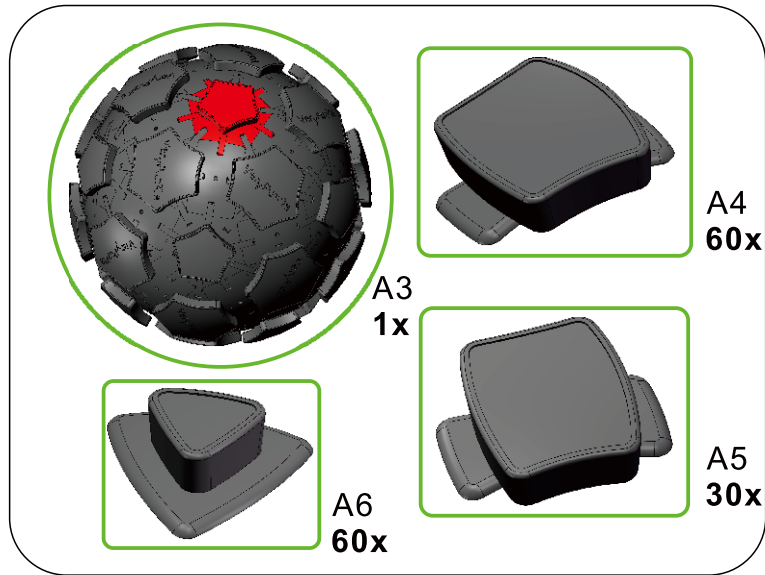
5



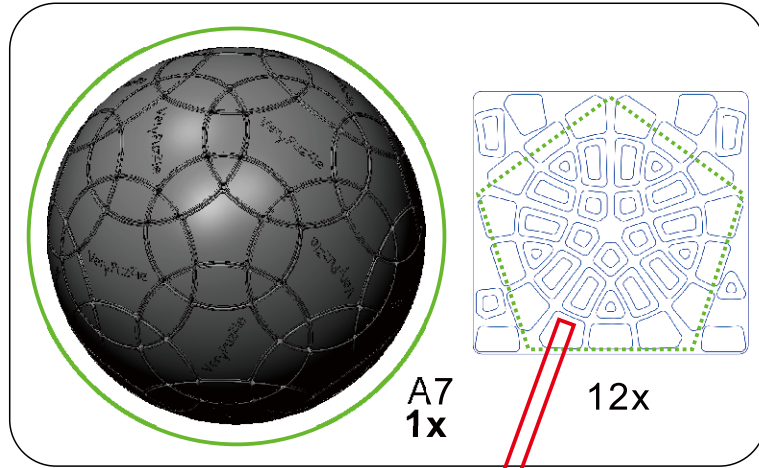
6



7



8



9

Rotation Rules

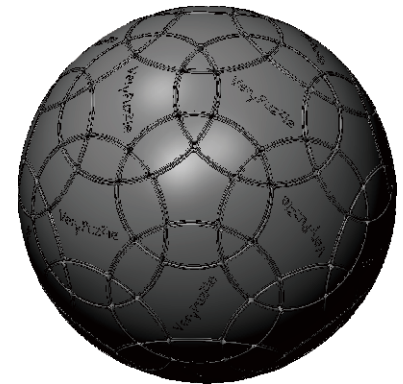
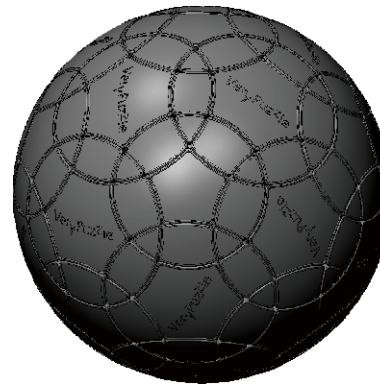


3-fold symmetry
Turns $120 \times n$ degrees

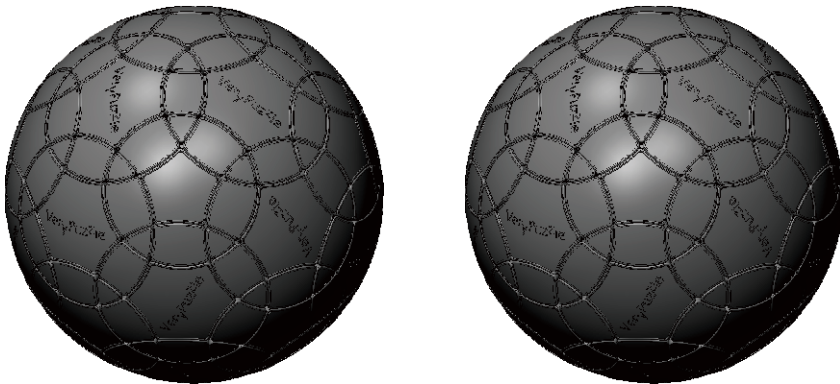
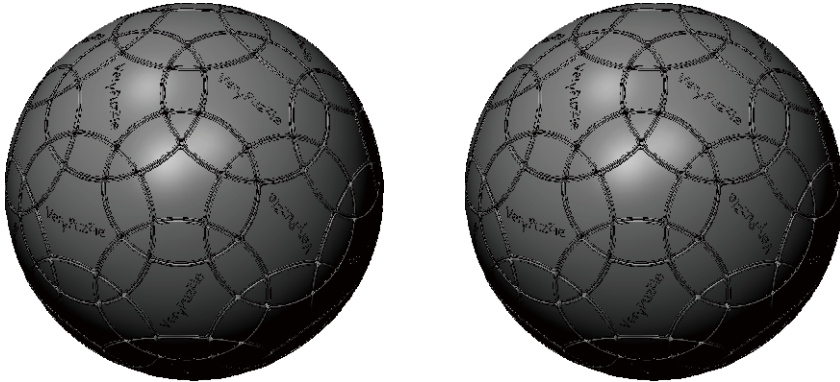


5-fold symmetry
Turns $72 \times n$ degrees

Notations and Algorithms

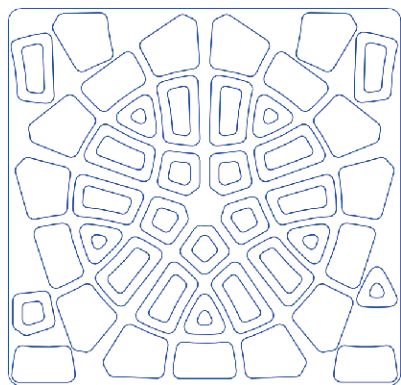
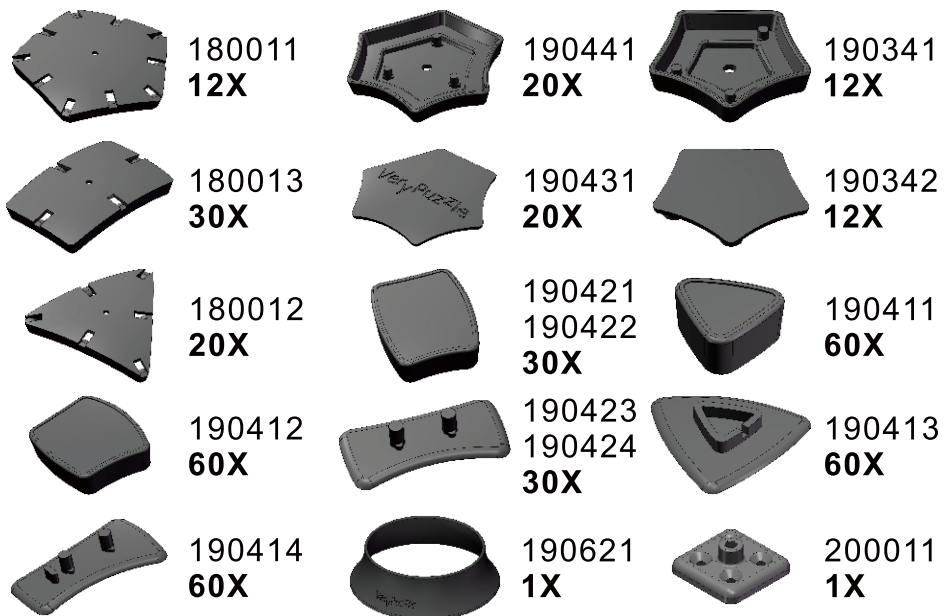


Notations and Algorithms



Product Information Card

| | |
|-----------------------------|-------------------------|
| Product Name | Spherical Tuttminx V1.0 |
| Model NO. | #69 |
| Design | VeryPuzzle Co., Ltd(HK) |
| Manufacturer | VeryPuzzle Co., Ltd(HK) |
| Year of release | 2019 |
| Maximum diameter | 145 mm |
| Visible moving parts | 182 pcs |
| Assembly challenge | ★★★★☆☆☆☆ |
| Solving challenge | ★★★☆☆☆☆☆ |
| Stickering strategy | Voronoi, simplified |
| Sticker material | Textured |
| Color scheme | 12 colors |
| Sticker protection | Yes |
| Number of stickers | 420 pcs |
| Axis & Symmetry | D(C5)+I(C3) |
| In-core spring | Yes |
| Adjustable tension | No |
| Technical Name | D1I3-M5 |
| Topological Print | D24I27 |
| Core specification | DIRT130 |



12X

Customer Service

1. support@verypuzzle.com



VeryPuzzle