

How to tighten the screws

1. It is always recommended to tighten the screws deep enough. The tighter the screws are, the more stable a puzzle will be (and probably more stiff while making turns).
2. Always leave a little bit of radial space along the screw so that the center cap can be lifted by around 1~2mm for single layered models.
**For those in-between models, like #65, #85, #88, #89, it is recommended to tighten further.
**For neat multiple layered models like #61, #75, #87, tighten the screws to their full depth.
3. Rules of thumb. Tension adjustment is in general dependent on personal judgement. Different tension could result in very different feel. Start with simple models and accumulate your own sense. Use different springs, screws, nuts if you think the default set can't provide your favorite handle.
4. Previous description of sticking screws out of nuts by 1-3mm is misleading in some cases and is not anymore recommended. Reason: the height of caps varies in different models.

VeryPuzzle
2021/08/06

VeryPuzzle

9th Megaminx Ball

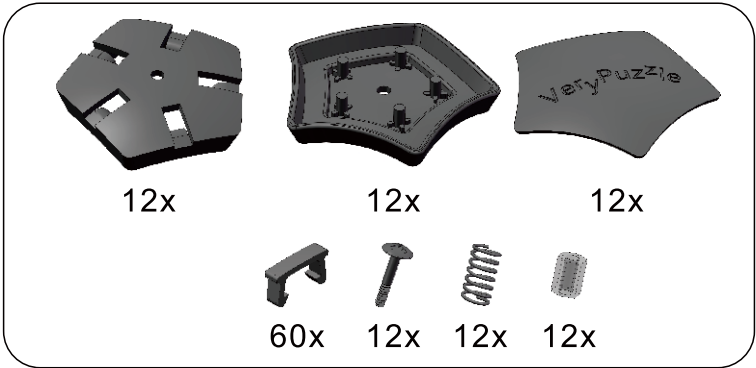
D9

#73

500+ parts
12 axes



1



12x

12x

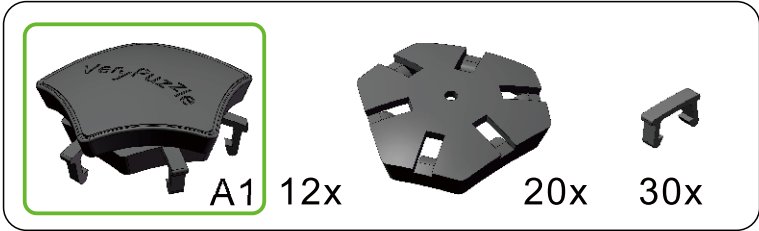
12x

 $12x$ 

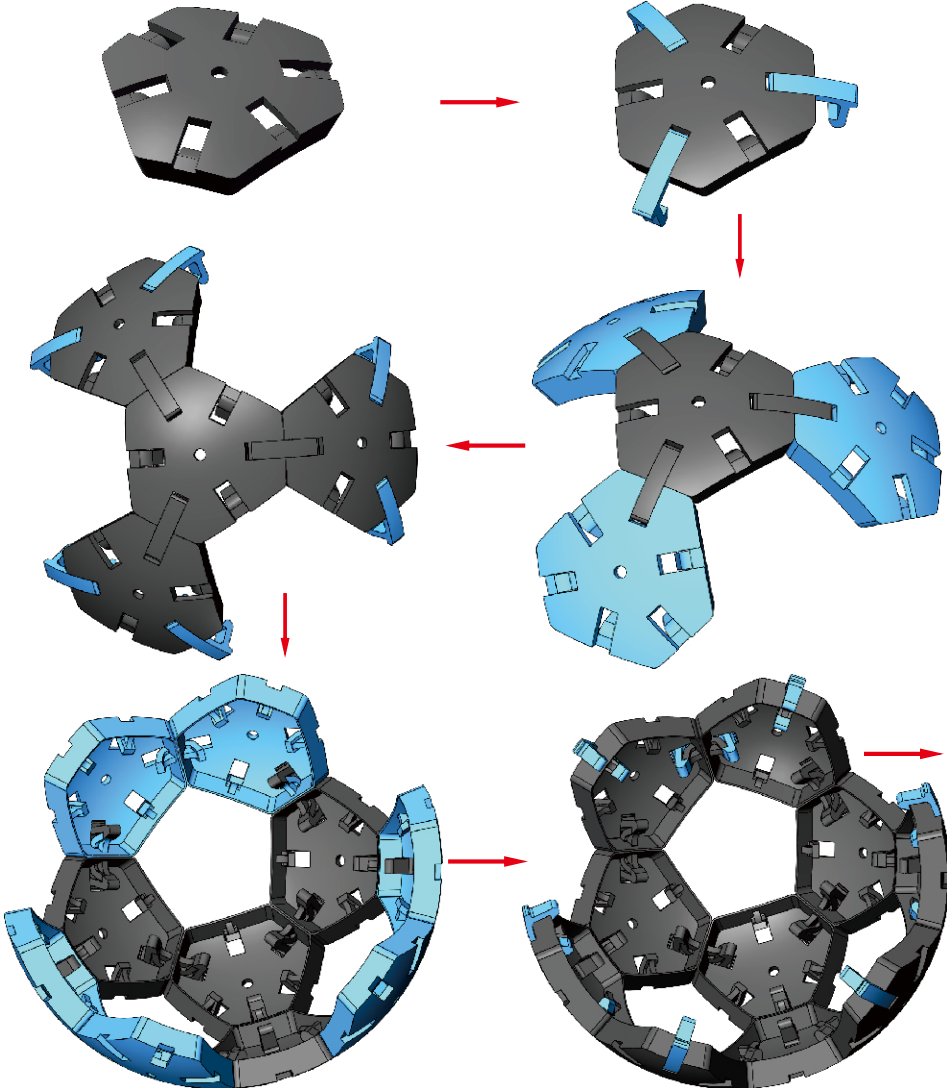
12x

-2/12-

2

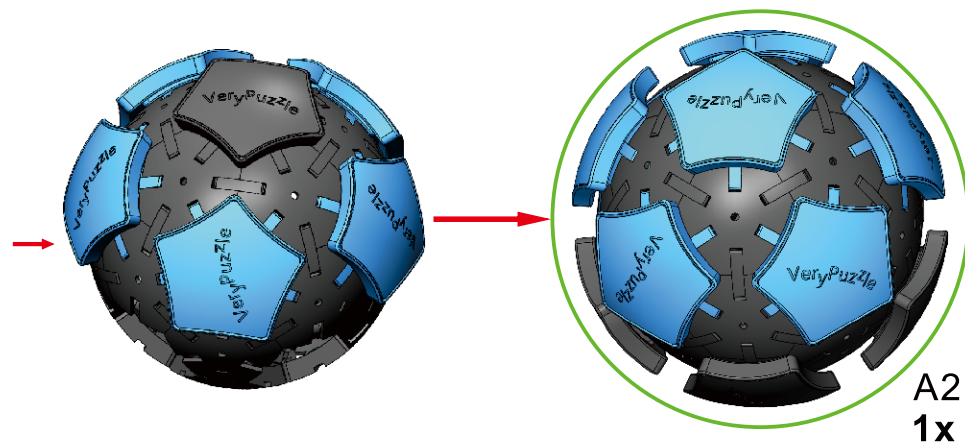
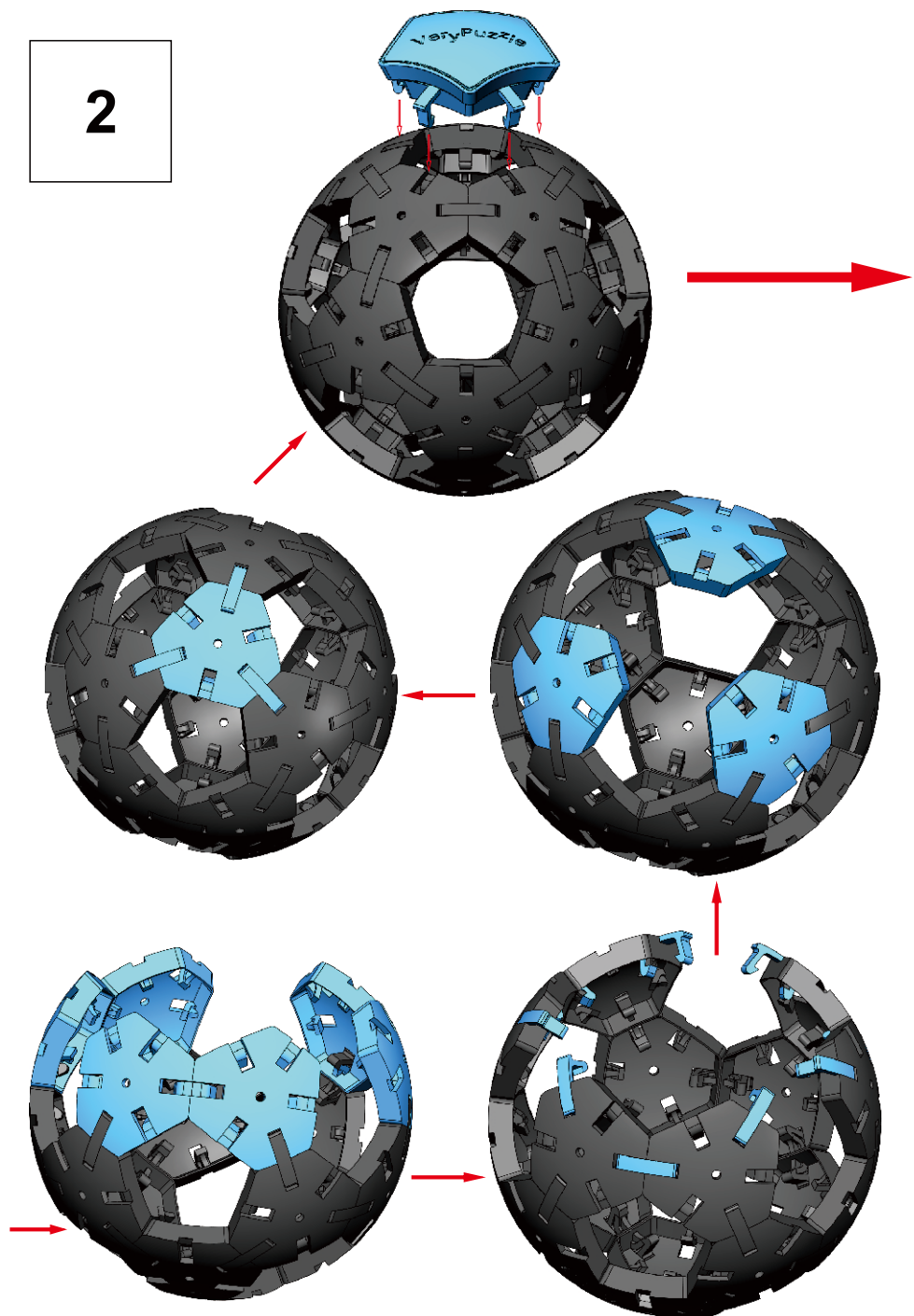
 $12x$

30x

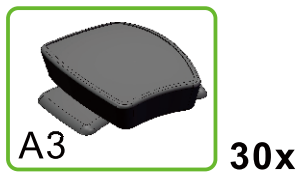
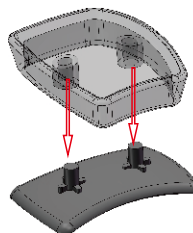
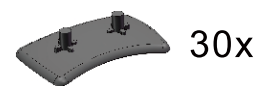
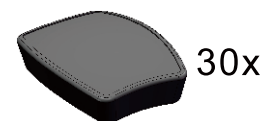


-3/12-

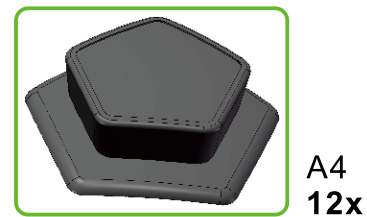
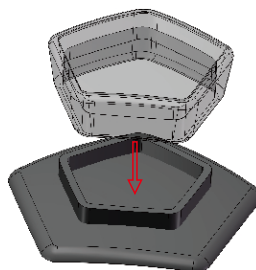
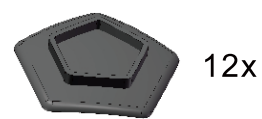
2



3



4



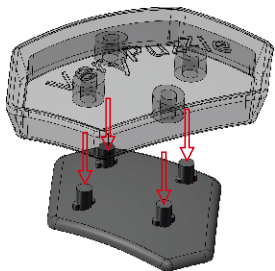
5



30x



30x

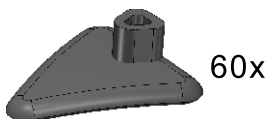


A5
30x

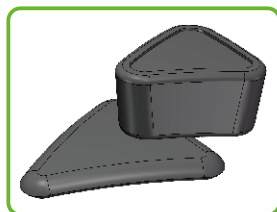
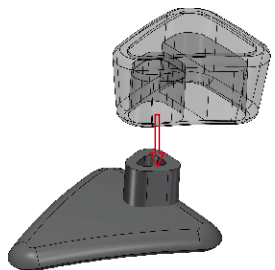
6



60x

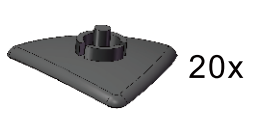


60x



A6
60x

7



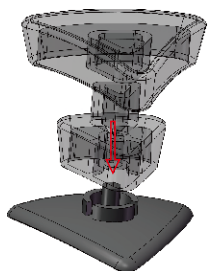
20x



20x

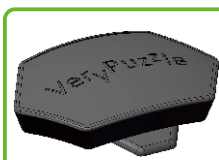
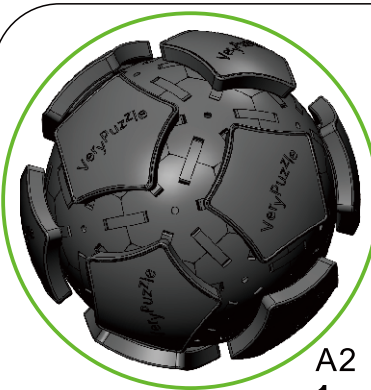


20x

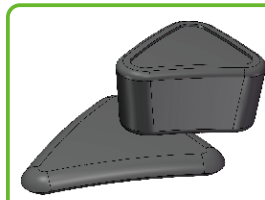


A7
20x

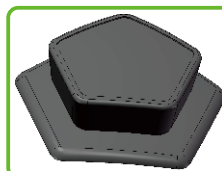
8



A5
30x



A6
60x



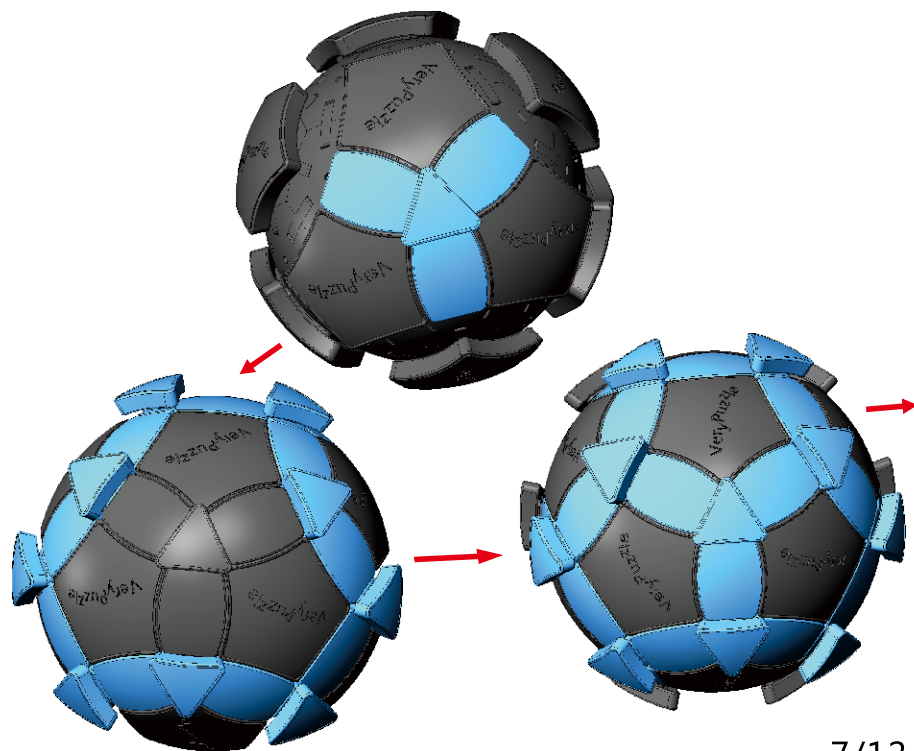
A4
12x



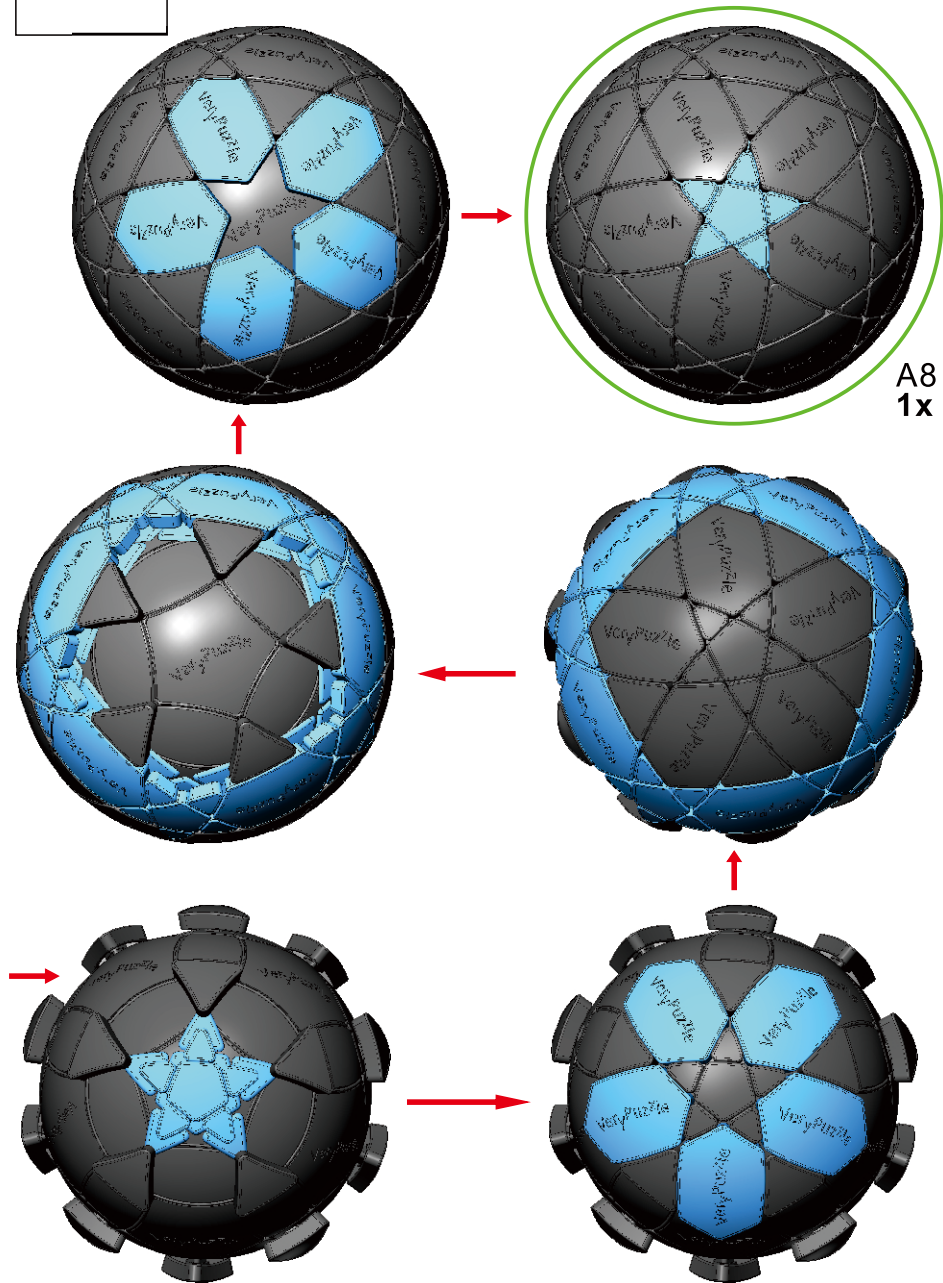
A3
30x



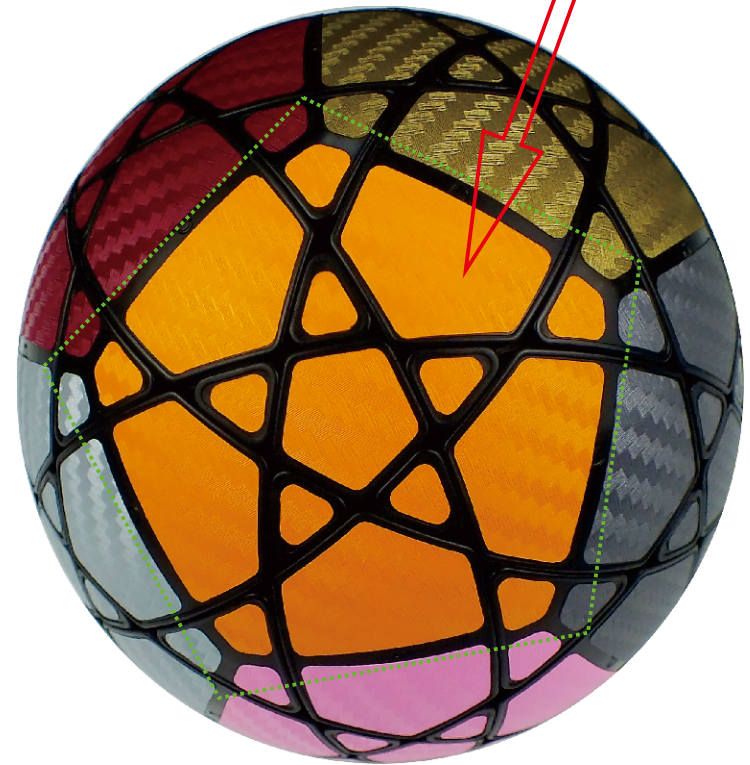
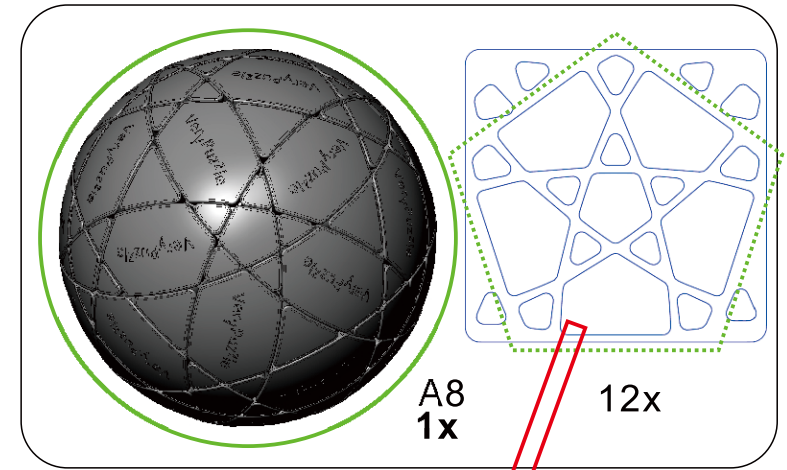
A7
20x



8

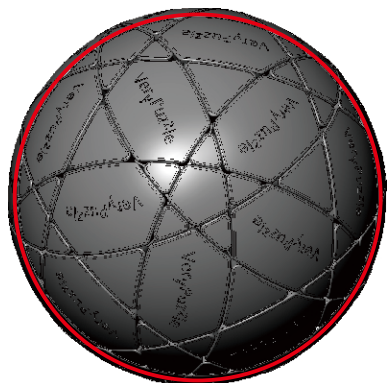


9



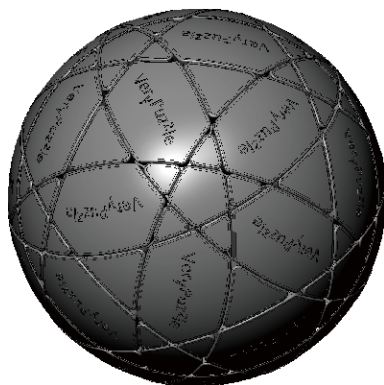
10

Rotation Rules



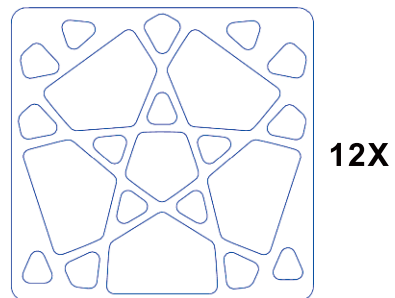
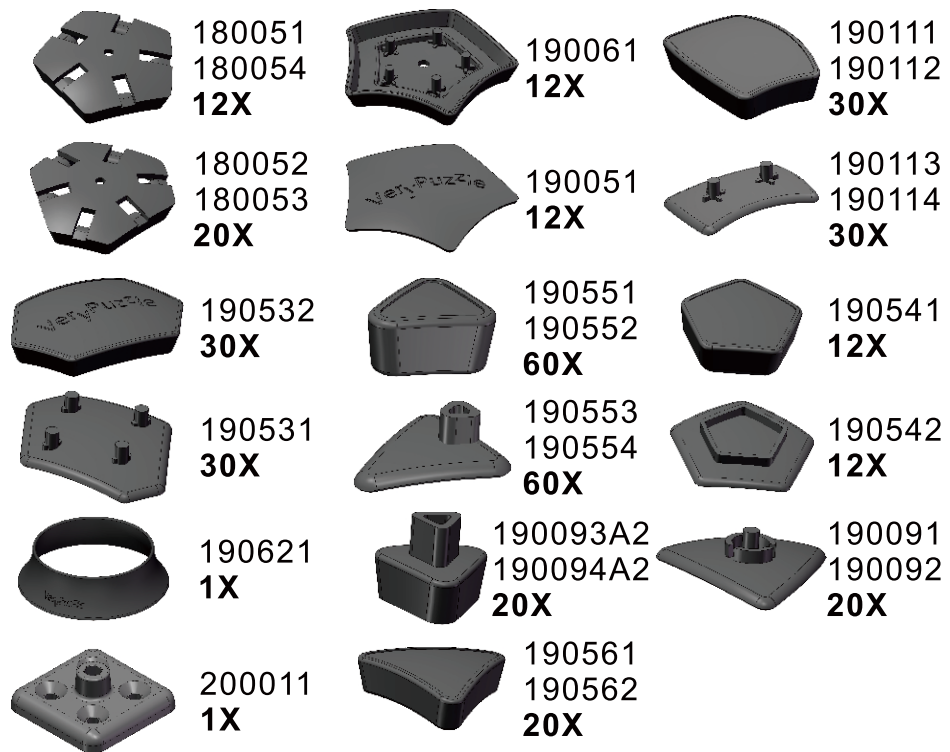
5-fold symmetry
Turns $72^\circ \times n$ degrees

Notations and Algorithms



Product Information Card

Product Name	9th Megaminx Ball, D9
Model NO.	#73
Design	VeryPuzzle Co., Ltd(HK)
Manufacturer	VeryPuzzle Co., Ltd(HK)
Year of release	2019
Maximum diameter	95 mm
Visible moving parts	122 pcs
Assembly challenge	★★★★☆☆☆☆
Solving challenge	★★★★☆☆☆☆
Stickering strategy	Voronoi
Sticker material	Textured
Color scheme	12 colors
Sticker protection	Yes
Number of stickers	192 pcs
Axis & Symmetry	D(C5)
In-core spring	Yes
Adjustable tension	No
Technical Name	D9
Topological Print	D72
Core specification	DI80



Customer Service

1. support@verypuzzle.com



VeryPuzzle