

How to tighten the screws

1. It is always recommended to tighten the screws deep enough. The tighter the screws are, the more stable a puzzle will be (and probably more stiff while making turns).

2. Always leave a little bit of radial space along the screw so that the center cap can be lifted by around 1~2mm for single layered models.

**For those in-between models, like #65, #85, #88, #89, it is recommended to tighten further.

**For neat multiple layered models like #61, #75, #87, tighten the screws to their full depth.

3. Rules of thumb. Tension adjustment is in general dependent on personal judgement. Different tension could result in very different feel. Start with simple models and accumulate your own sense. Use different springs, screws, nuts if you think the default set can't provide your favorite handle.

4. Previous description of sticking screws out of nuts by 1-3mm is misleading in some cases and is not anymore recommended. Reason: the height of caps varies in different models.

VeryPuzzle
2021/08/06

VeryPuzzle

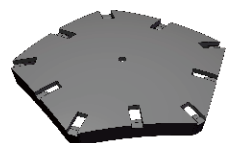


Giga Rhombic Tuttminx
D1RT5-M5-L2
#75

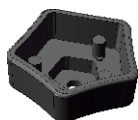
2200+ parts
42 axes



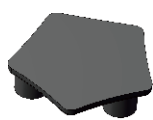
1



12x



12x



12x



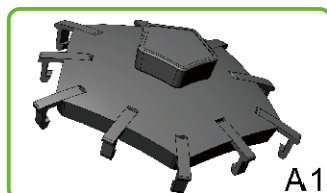
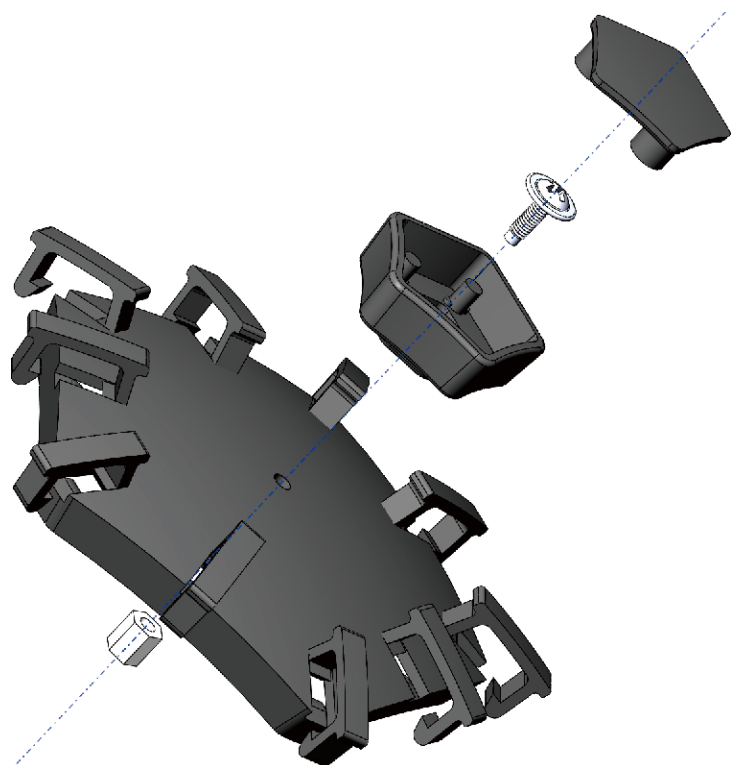
120x



12x



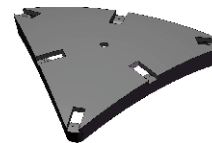
12x



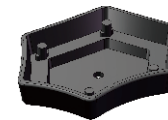
A1

12x

2



30x



30x



30x



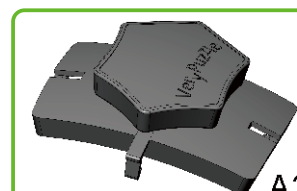
60x



30x



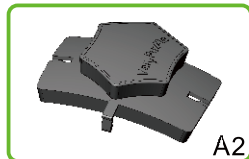
30x



A2

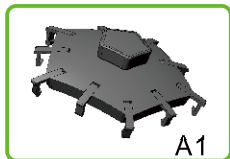
30x

3



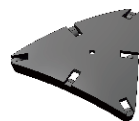
A2

30x

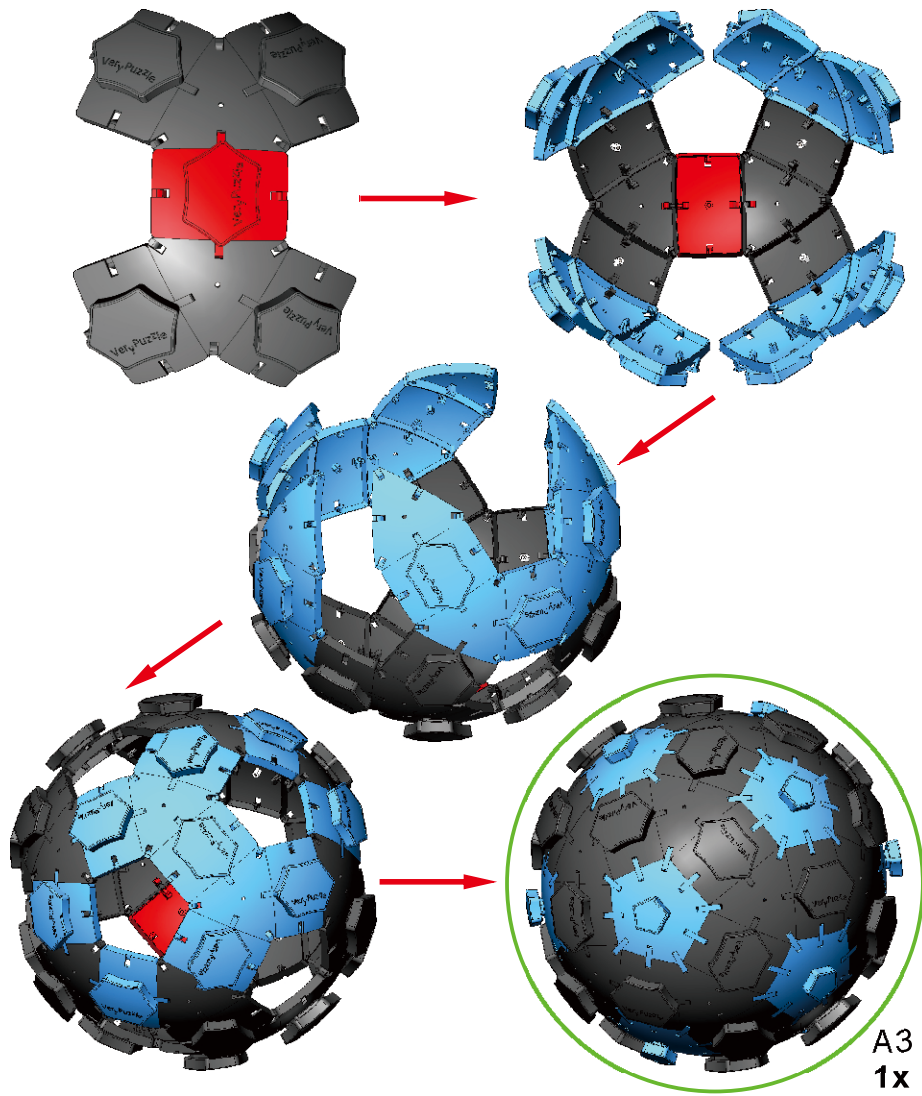


A1

12x



20x

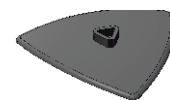


A3
1x

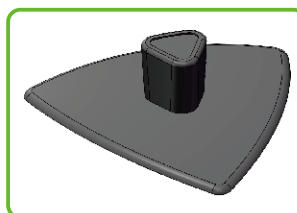
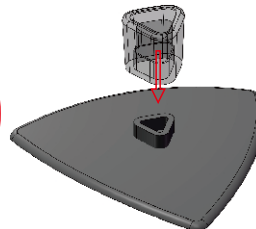
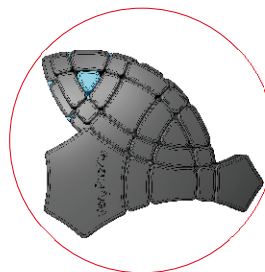
4



20x



20x

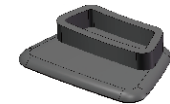


A4
20x

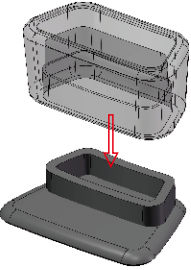
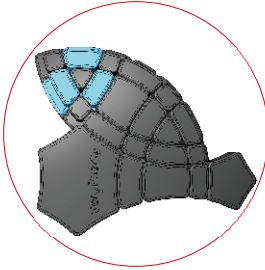
5



60x



60x



A5
60x

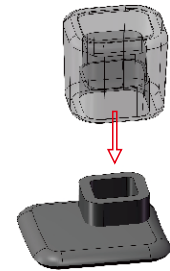
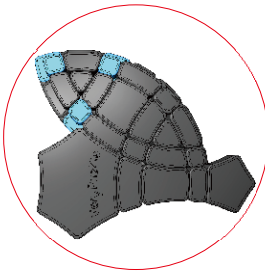
6



60x

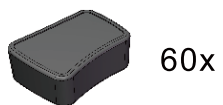


60x



A6
60x

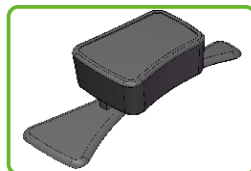
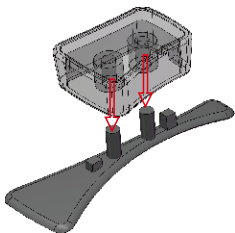
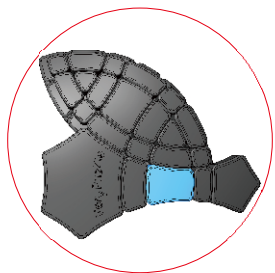
7



60x



60x

A7
60x

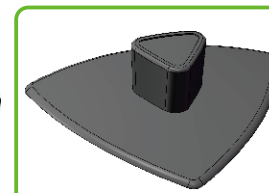
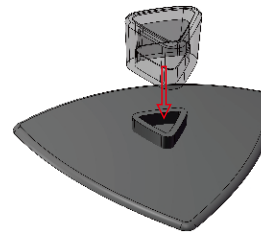
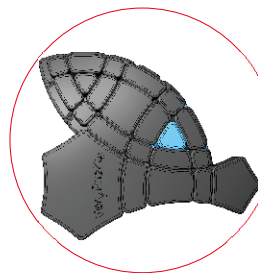
10



60x



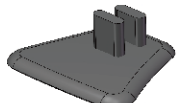
60x

A10
60x

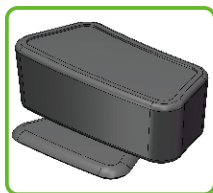
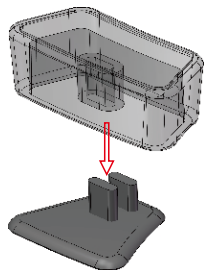
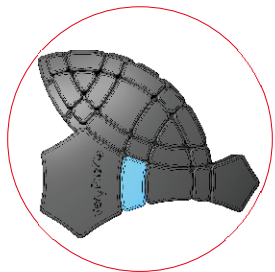
8



60x



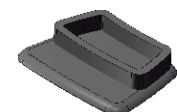
60x

A8
60x

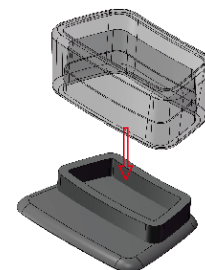
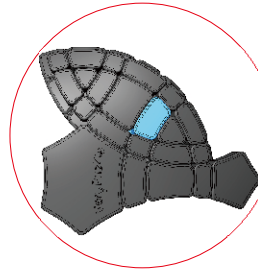
11



60x



60x

A11
60x

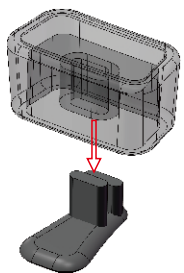
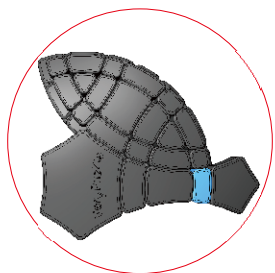
9



60x



60x

A9
60x

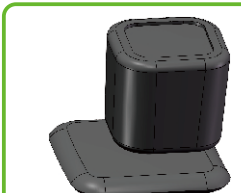
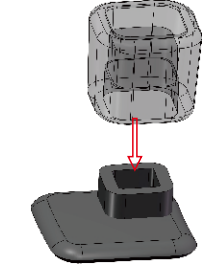
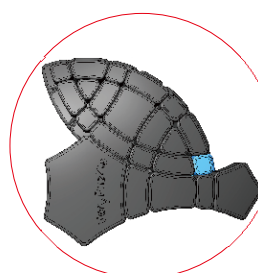
12



60x



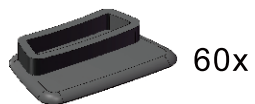
60x

A12
60x

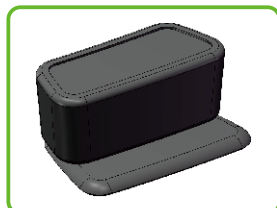
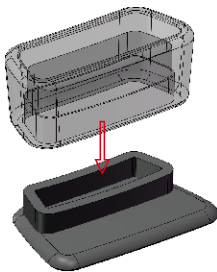
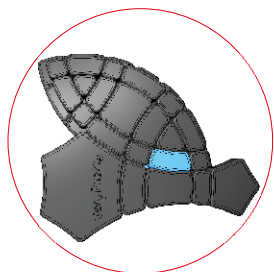
13



60x



60x



A13
60x

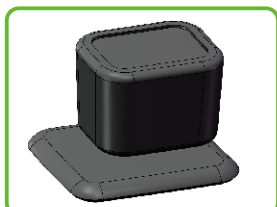
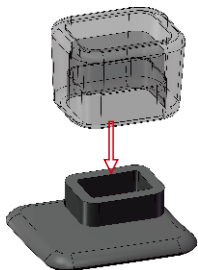
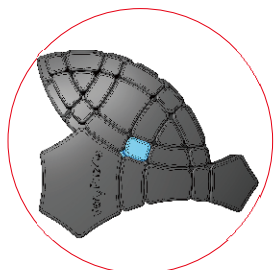
14



60x



60x

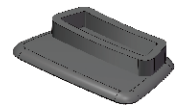


A14
60x

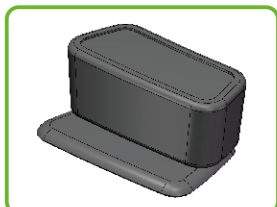
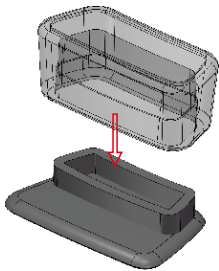
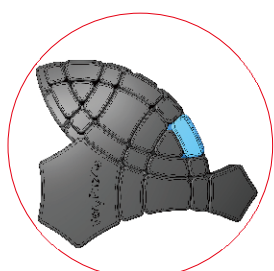
15



60x



60x



A15
60x

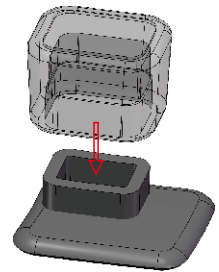
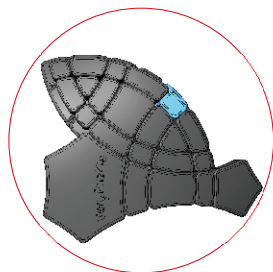
16



60x



60x



A16
60x

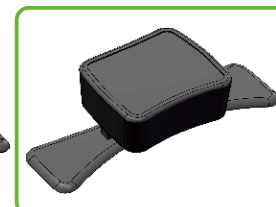
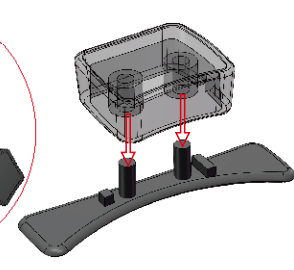
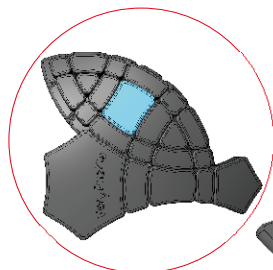
17



60x



60x

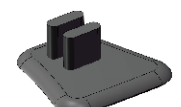


A17
60x

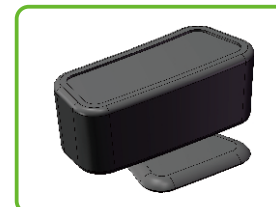
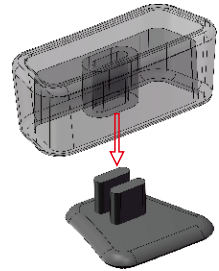
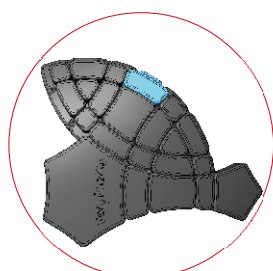
18



60x



60x

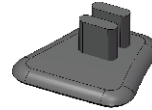


A18
60x

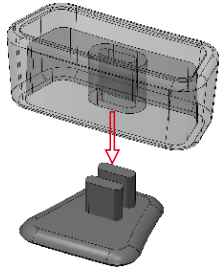
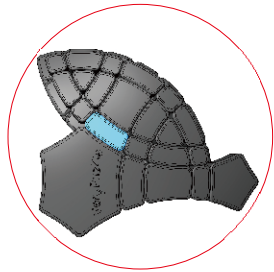
19



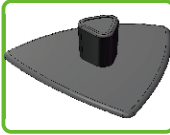
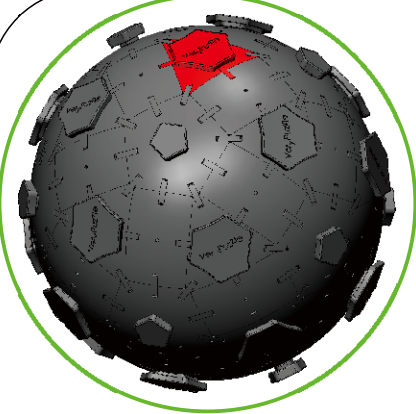
60x



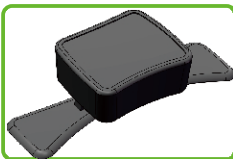
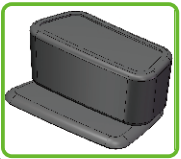
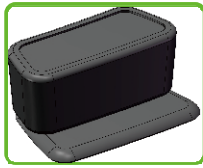
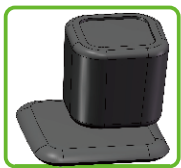
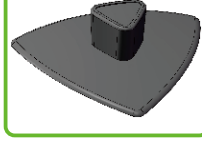
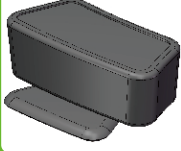
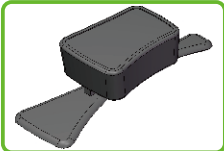
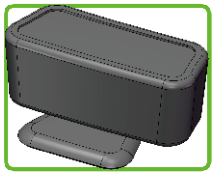
60x



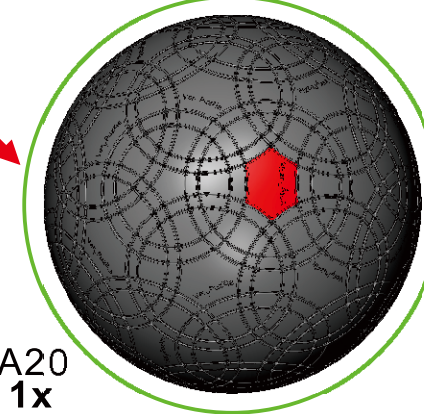
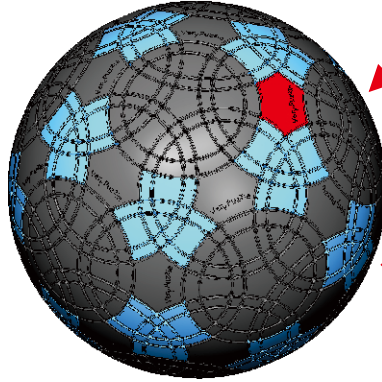
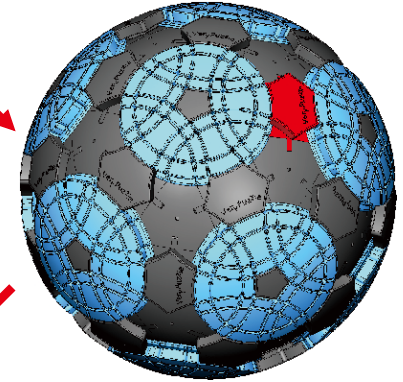
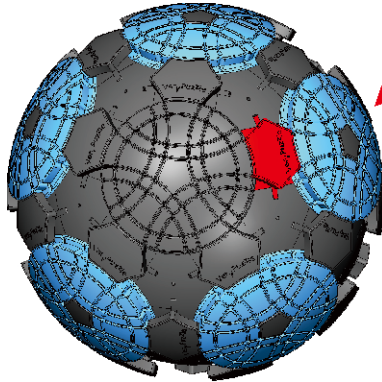
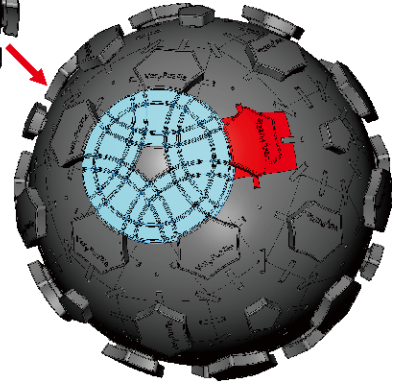
A19
60x



20

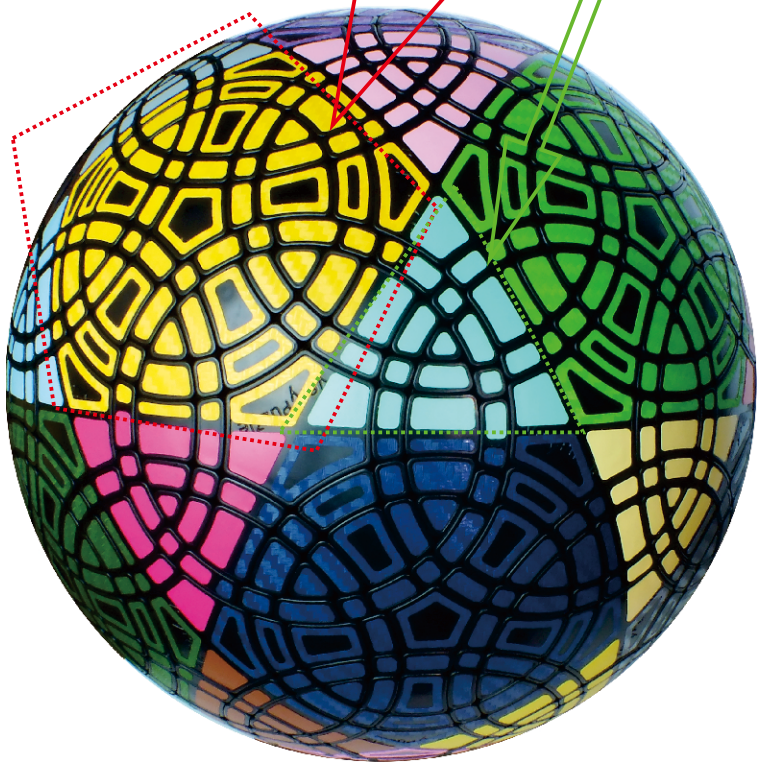
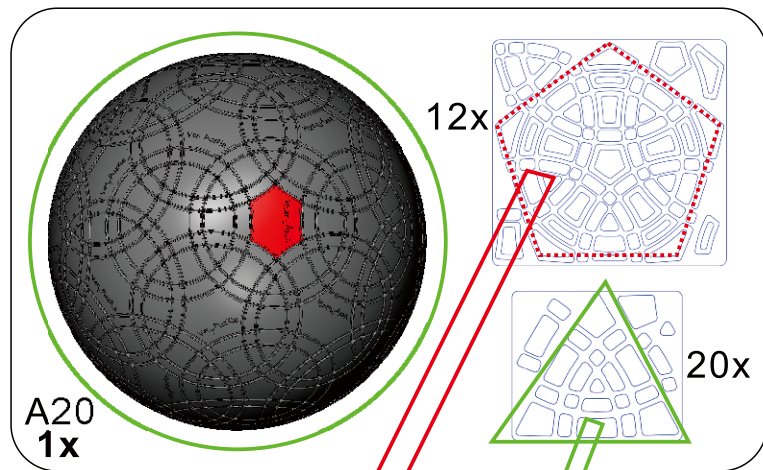


20



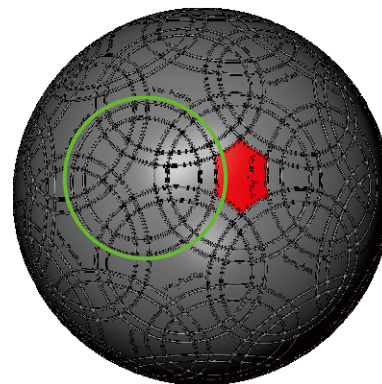
A20
1x

21

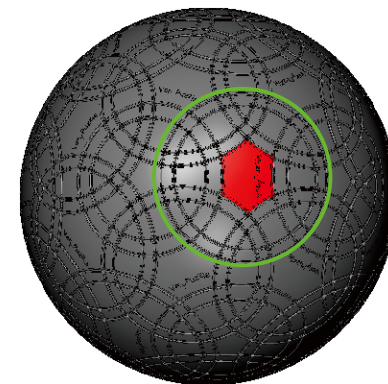


22

Rotation Rules

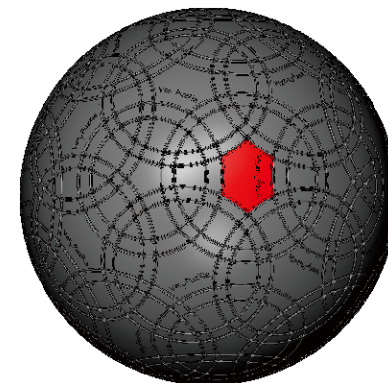
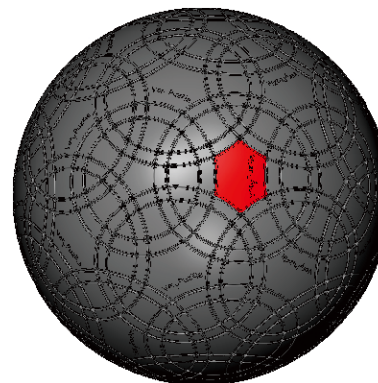


5-fold symmetry
Turns $72 \cdot n$ degrees



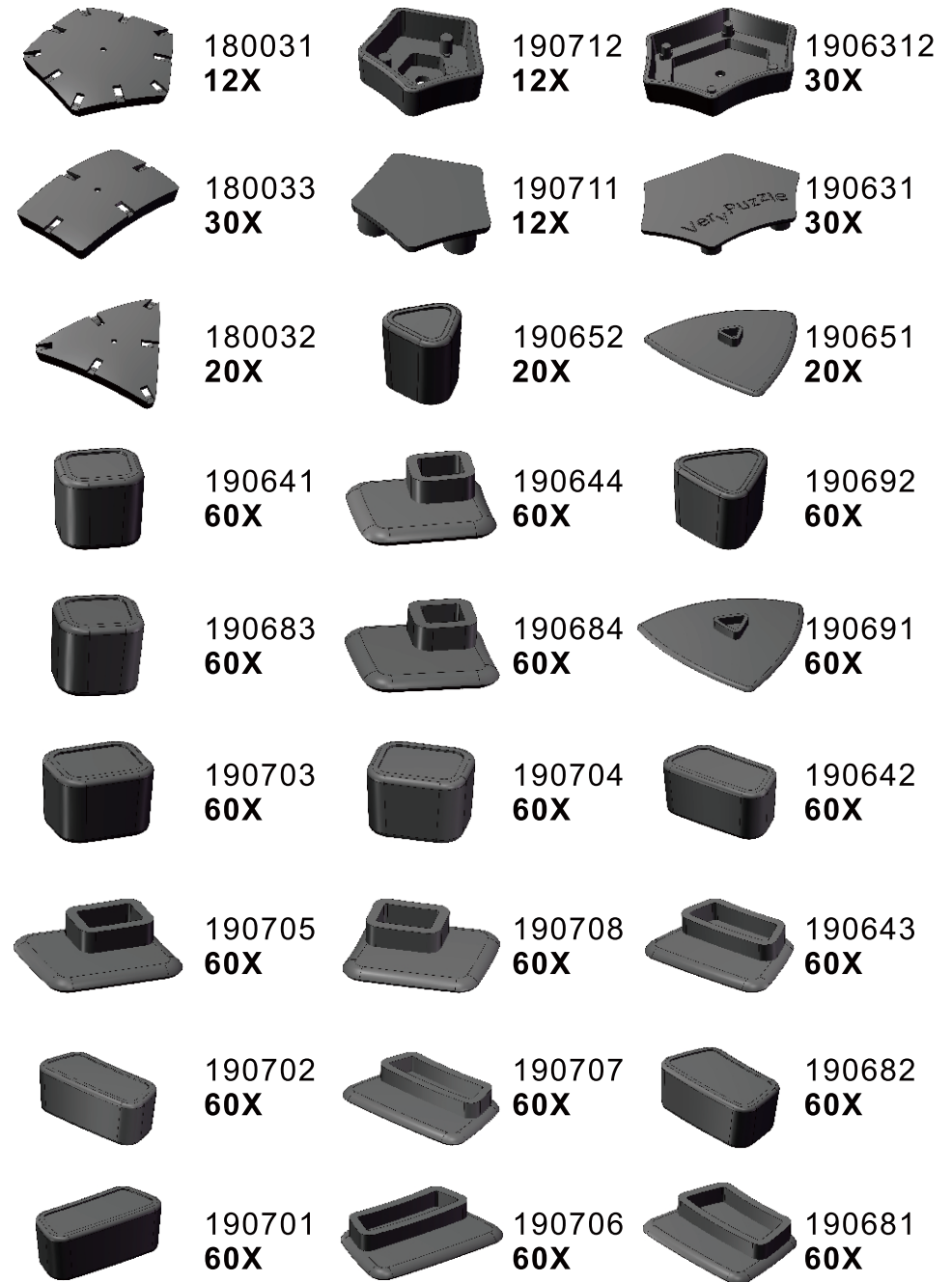
R4 symmetry
Turns $180 \cdot n$ degrees
Turns $180 \cdot n \pm 63.4$ degrees

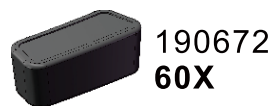
Notations and Algorithms



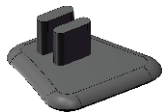
Product Information Card

Product Name	Giga Rhombic Tuttminx
Model NO.	#75
Design	VeryPuzzle Co., Ltd(HK)
Manufacturer	VeryPuzzle Co., Ltd(HK)
Year of release	2020
Maximum diameter	200 mm
Visible moving parts	1097 pcs
Assembly challenge	★★★★★★☆☆☆☆
Solving challenge	★★★★★★☆☆☆☆
Stickering strategy	Voronoi, simplified
Sticker material	Textured, uniform matt
Color scheme	32 colors
Sticker protection	Yes
Number of stickers	1232 pcs
Axis & Symmetry	D(C5)+RT(R4)
In-core spring	Yes
Adjustable tension	No
Technical Name	D1RT5-M5-L2
Topological Print	D{24,28}RT{23,27}
Core specification	DIRT180





190672
60X



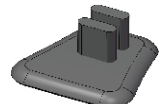
190673
60X



190722
60X



190671
60X



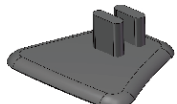
190674
60X



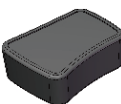
190723
60X



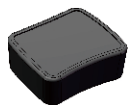
190721
60X



190724
60X



190732
60X



190662
60X



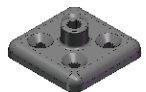
190661
60X



190731
60X



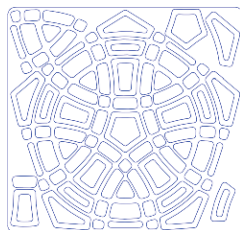
180X 42X 42X



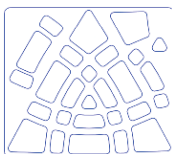
200011
1X



190621
1X



12x



20x

Customer Service

1. support@verypuzzle.com



2. **VeryPuzzle**