

How to tighten the screws

1. It is always recommended to tighten the screws deep enough. The tighter the screws are, the more stable a puzzle will be (and probably more stiff while making turns).

2. Always leave a little bit of radial space along the screw so that the center cap can be lifted by around 1~2mm for single layered models.

****For those in-between models, like #65, #85, #88, #89, it is recommended to tighten further.**

****For neat multiple layered models like #61, #75, #87, tighten the screws to their full depth.**

3. Rules of thumb. Tension adjustment is in general dependent on personal judgement. Different tension could result in very different feel. Start with simple models and accumulate your own sense. Use different springs, screws, nuts if you think the default set can't provide your favorite handle.

4. Previous description of sticking screws out of nuts by 1-3mm is misleading in some cases and is not anymore recommended. Reason: the height of caps varies in different models.

VeryPuzzle
2021/08/06

VeryPuzzle

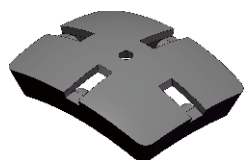


Stingray
C1RD1-M3
#76

200+ parts
20 axes



1



12x



12x



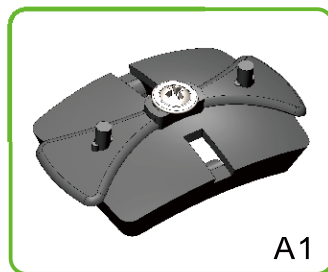
12x



12x



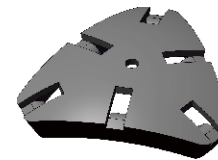
12x



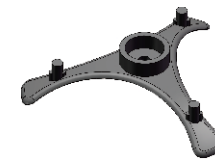
A1

20x

2



8x



8x



24x



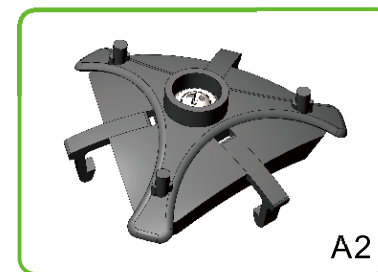
8x



8x



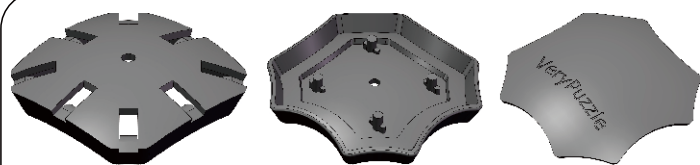
8x



A2

12x

3



6x

6x

6x



48x



6x



6x



6x



A3

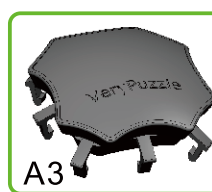
20x

4



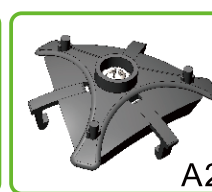
A1

12x



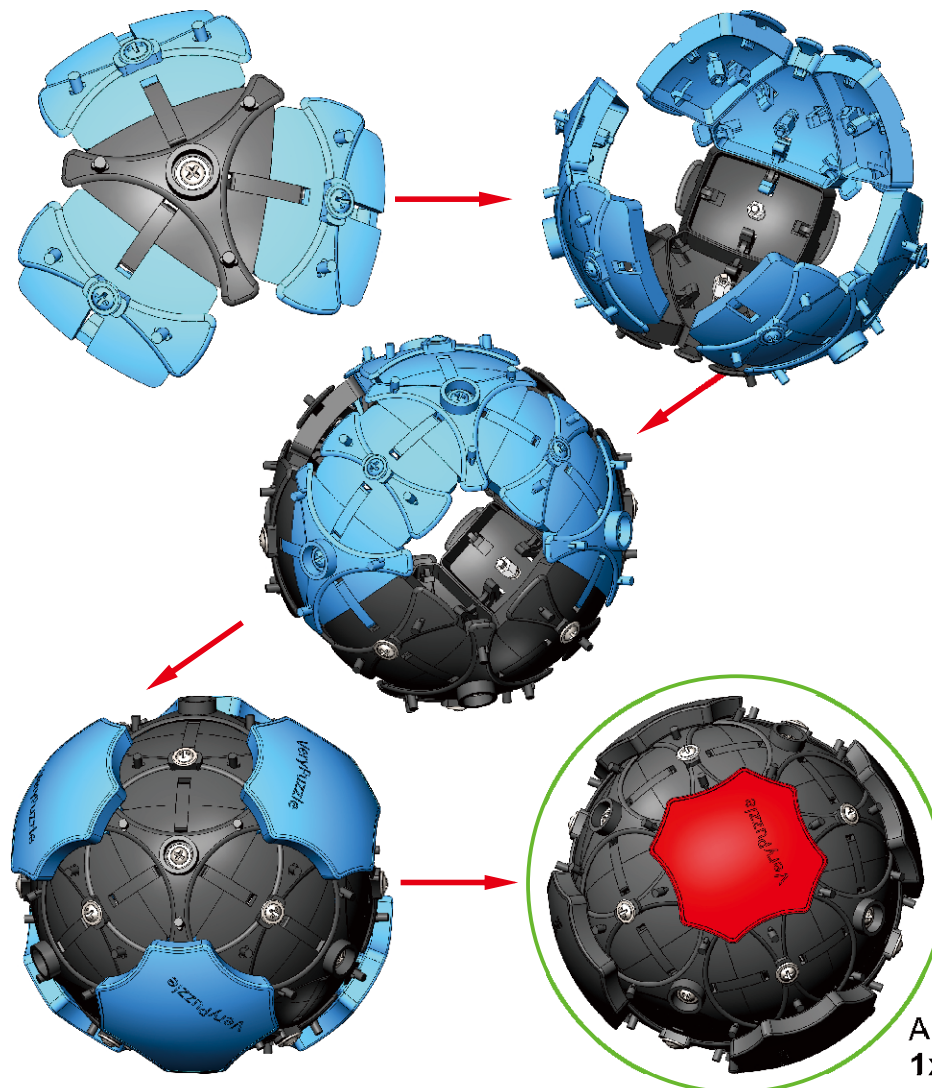
A3

6x



A2

8x



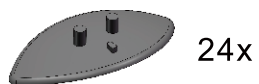
A4

1x

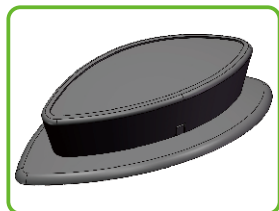
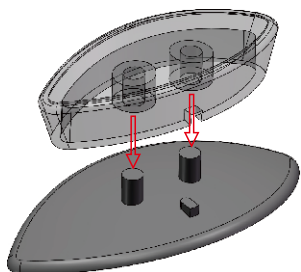
5



24x

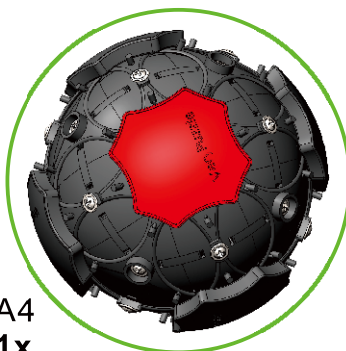


24x

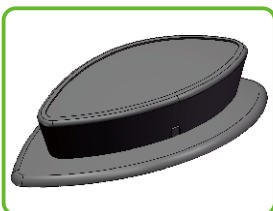


A5
24x

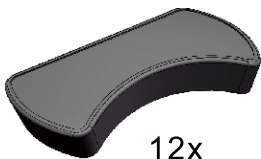
6



A4
1x



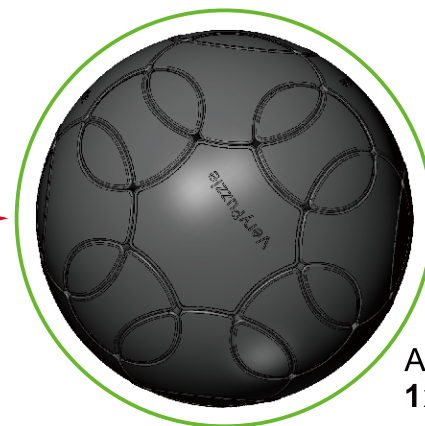
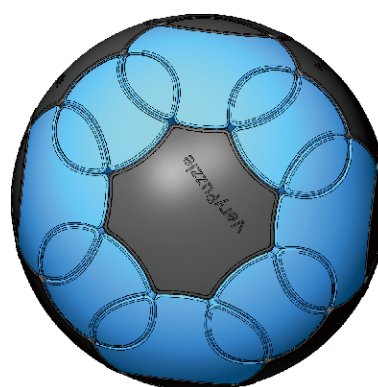
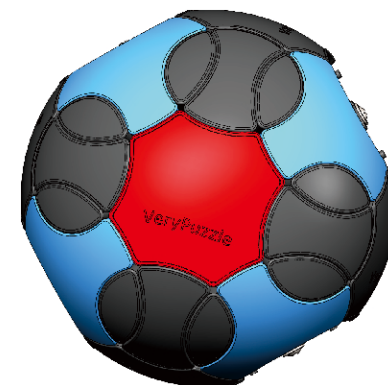
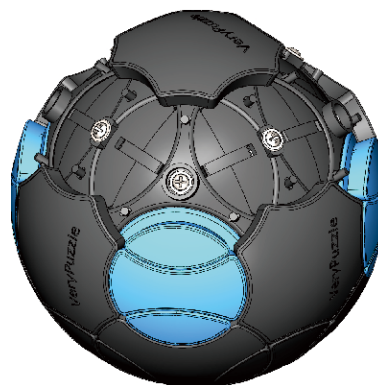
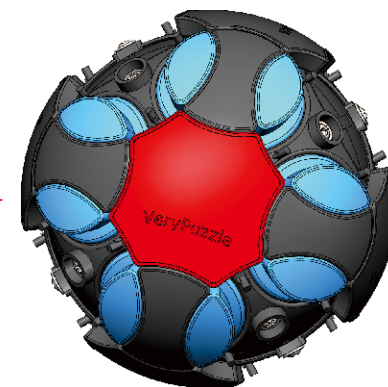
A5
24x



12x

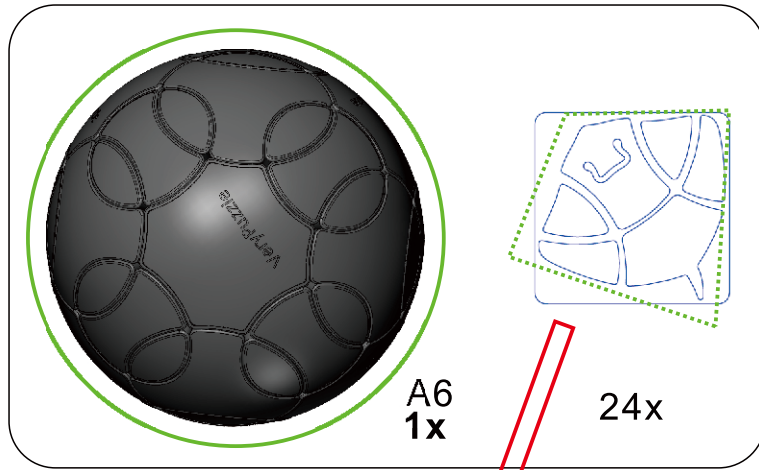


8x



A6
1x

7



8

Rotation Rules



3-fold symmetry
Turns $120 \cdot n$ degrees

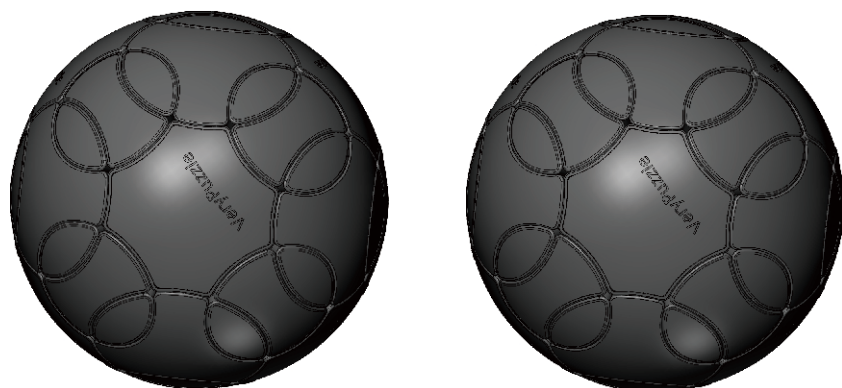
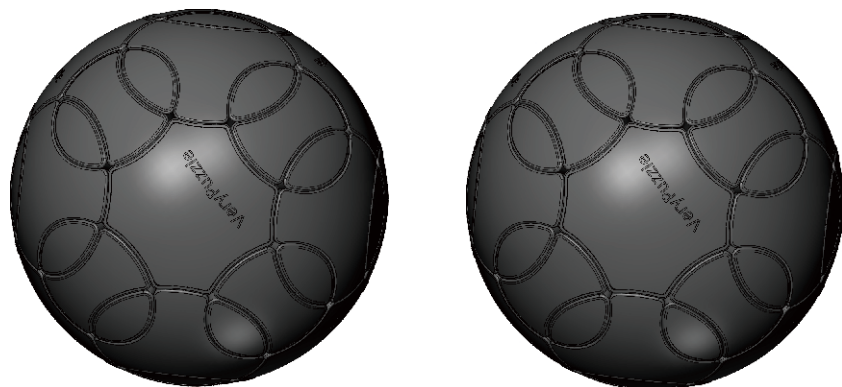


2-fold symmetry
Turns $180 \cdot n$ degrees

Notations and Algorithms

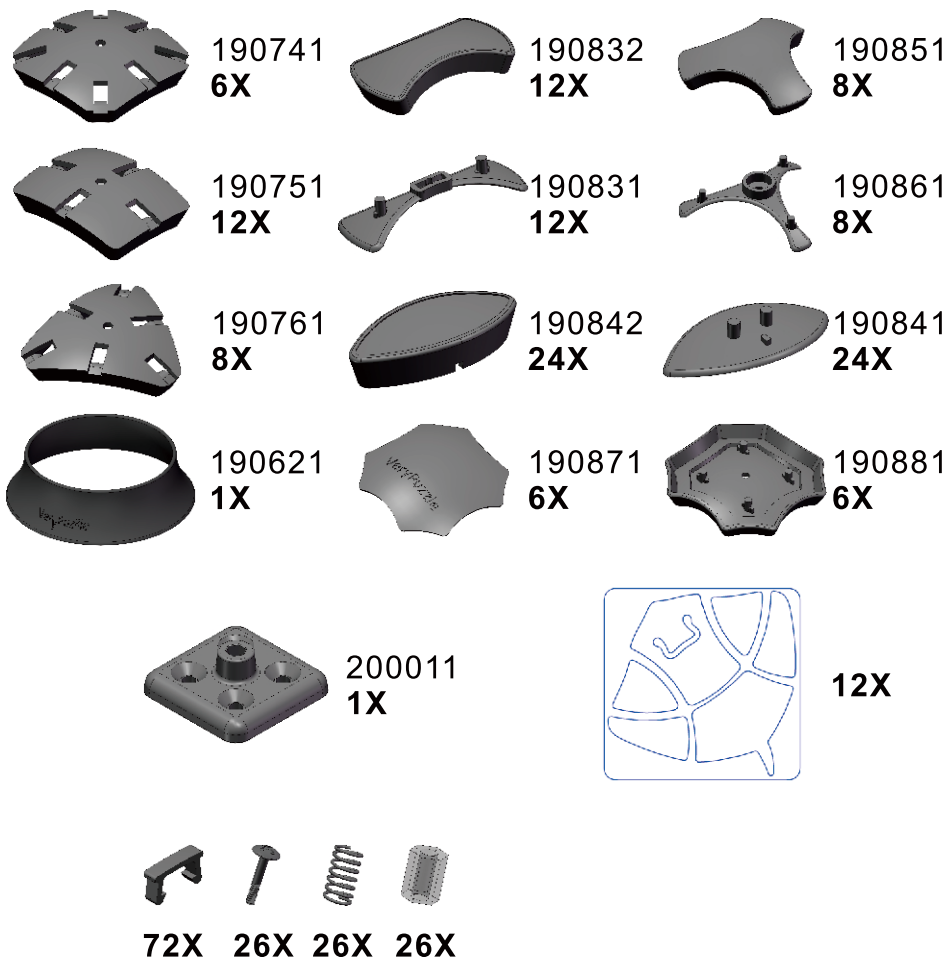


Notations and Algorithms



Product Information Card

Product Name	Stingray
Model NO.	#76
Design	VeryPuzzle Co., Ltd(HK)
Manufacturer	VeryPuzzle Co., Ltd(HK)
Year of release	2020
Maximum diameter	95 mm
Visible moving parts	50 pcs
Assembly challenge	★★★☆☆☆☆☆☆
Solving challenge	★★☆☆☆☆☆☆☆☆
Stickering strategy	Voronoi, artistic
Sticker material	Uniform
Color scheme	24 colors
Sticker protection	Yes
Number of stickers	144 pcs
Axis & Symmetry	O(C3)+RD(C2)
In-core spring	Yes
Adjustable tension	No
Technical Name	C1RD1-M3
Topological Print	O28RD22
Core specification	CORD80



Customer Service

1. support@verypuzzle.com

