

## How to tighten the screws

1. It is always recommended to tighten the screws deep enough. The tighter the screws are, the more stable a puzzle will be (and probably more stiff while making turns).

2. Always leave a little bit of radial space along the screw so that the center cap can be lifted by around 1~2mm for single layered models.

**\*\*For those in-between models, like #65, #85, #88, #89, it is recommended to tighten further.**

**\*\*For neat multiple layered models like #61, #75, #87, tighten the screws to their full depth.**

3. Rules of thumb. Tension adjustment is in general dependent on personal judgement. Different tension could result in very different feel. Start with simple models and accumulate your own sense. Use different springs, screws, nuts if you think the default set can't provide your favorite handle.

4. Previous description of sticking screws out of nuts by 1-3mm is misleading in some cases and is not anymore recommended. Reason: the height of caps varies in different models.

VeryPuzzle  
2021/08/06

# VeryPuzzle



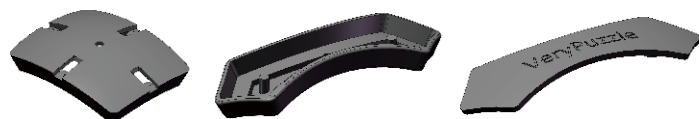
**Crazy Chopper F1**  
**C1RD5-M5-F1**

**#79**

400+ parts  
18 axes



1



12x

12x

12x



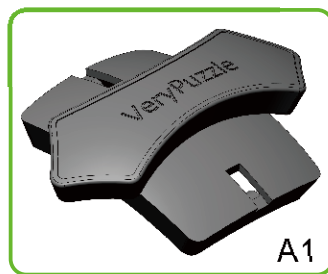
12x



12x



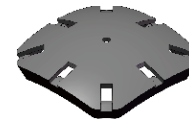
12x



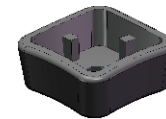
A1

12x

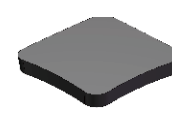
2



6x



6x



6x



24x



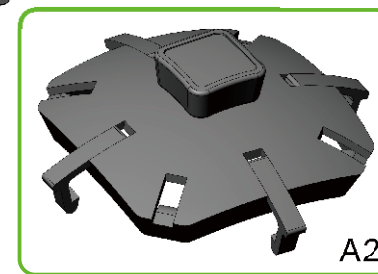
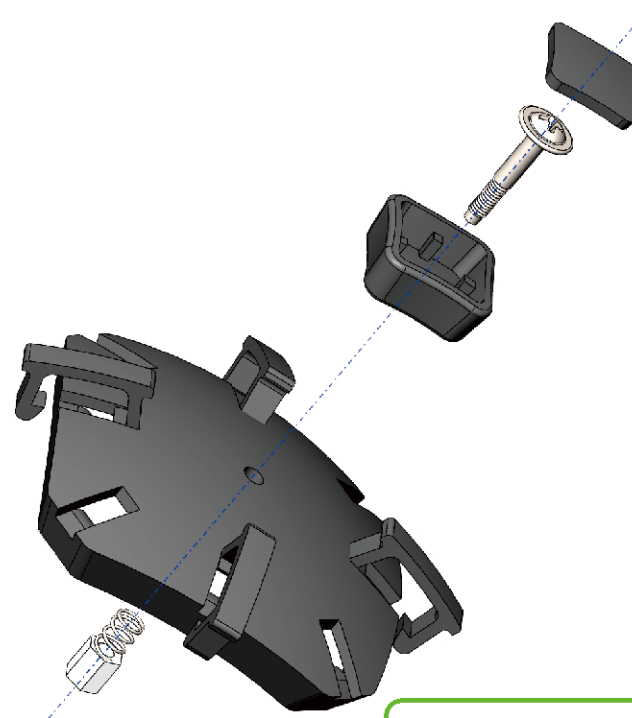
6x



6x



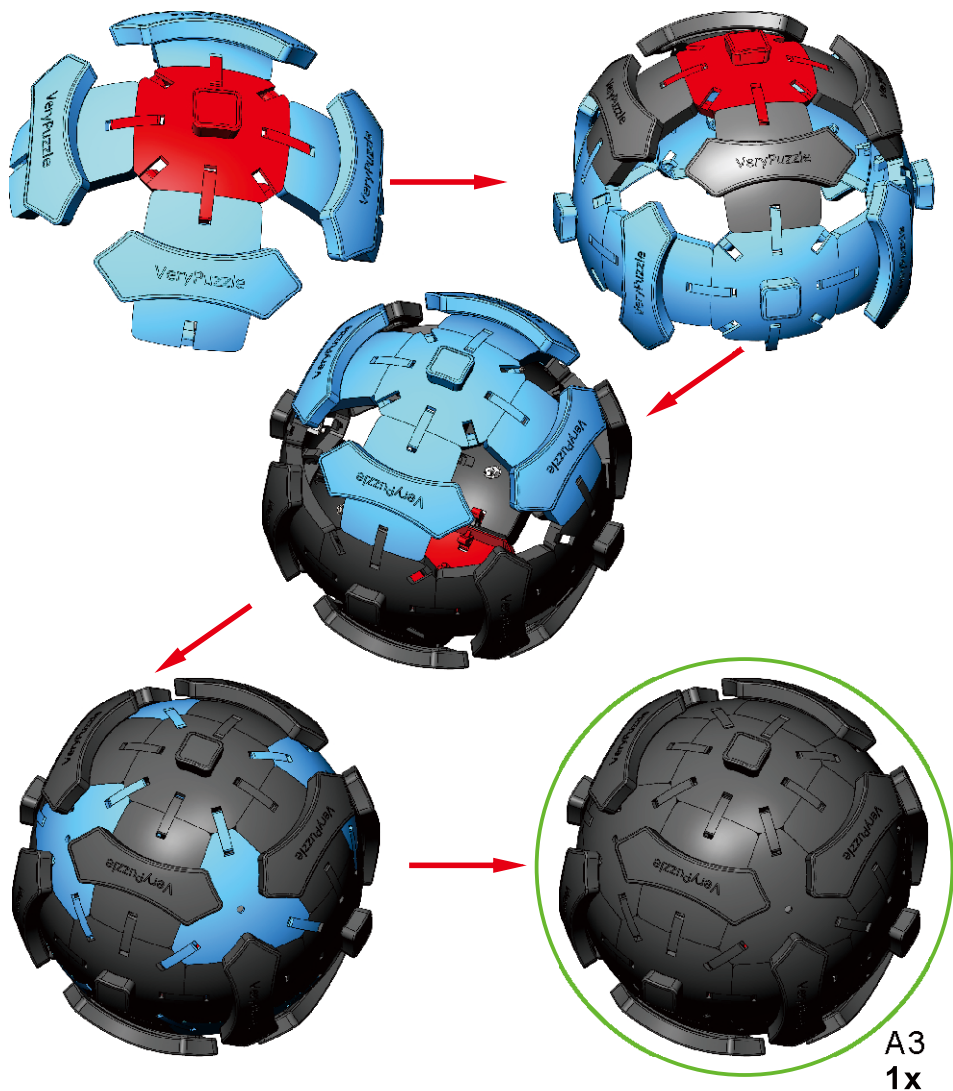
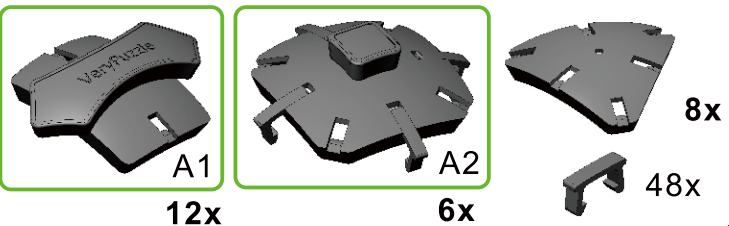
6x



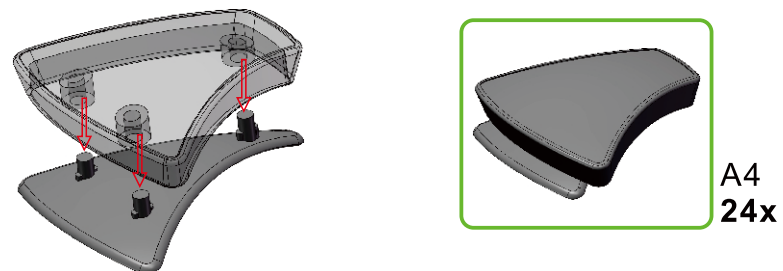
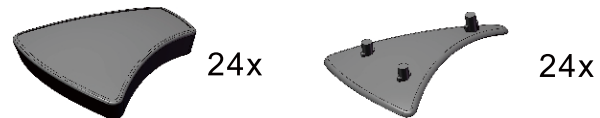
A2

6x

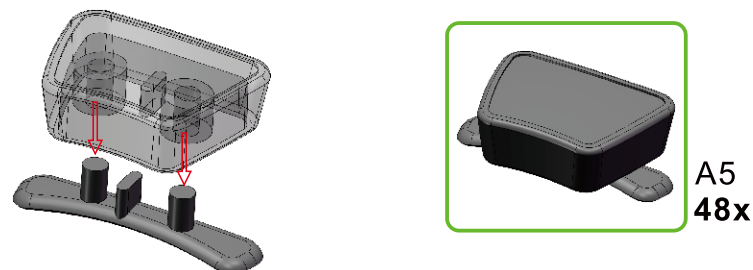
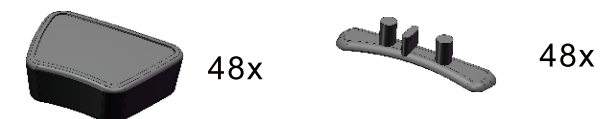
3



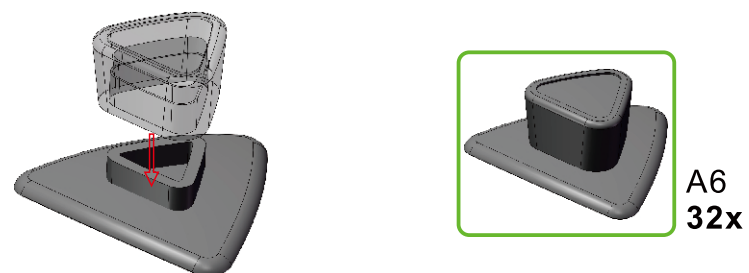
4



5



6

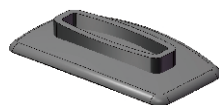




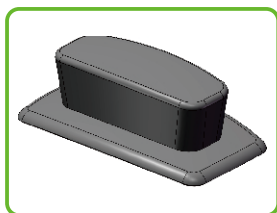
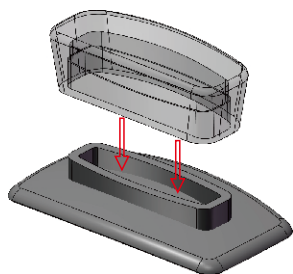
7



24x



24x



A7  
24x

8



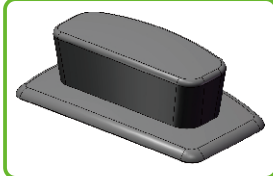
A3  
1x



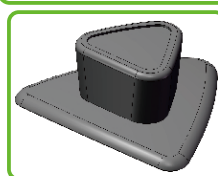
A4  
24x



A5  
48x

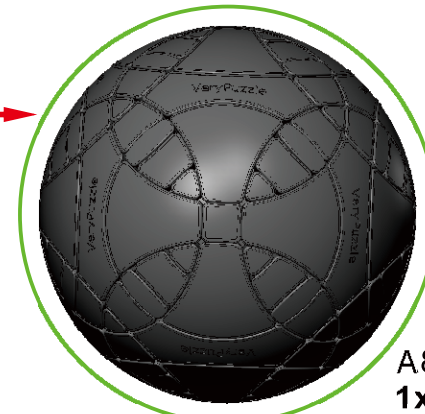
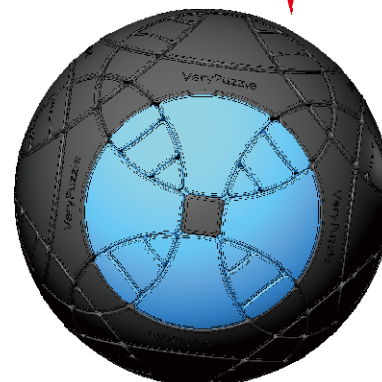
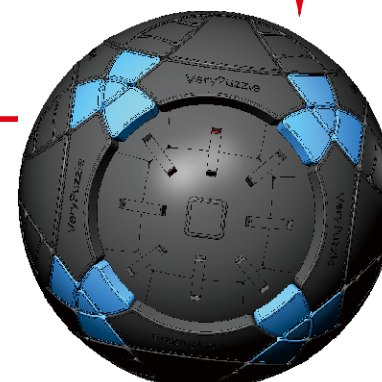
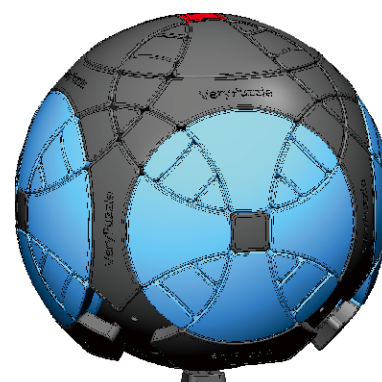
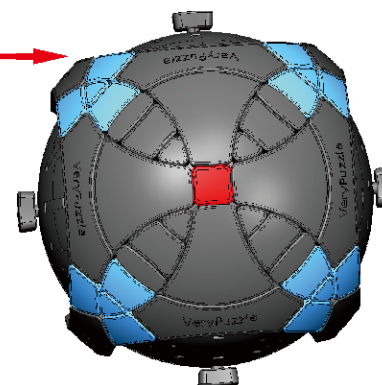
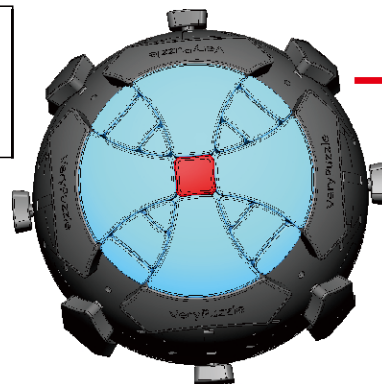


A7  
24x



A6  
32x

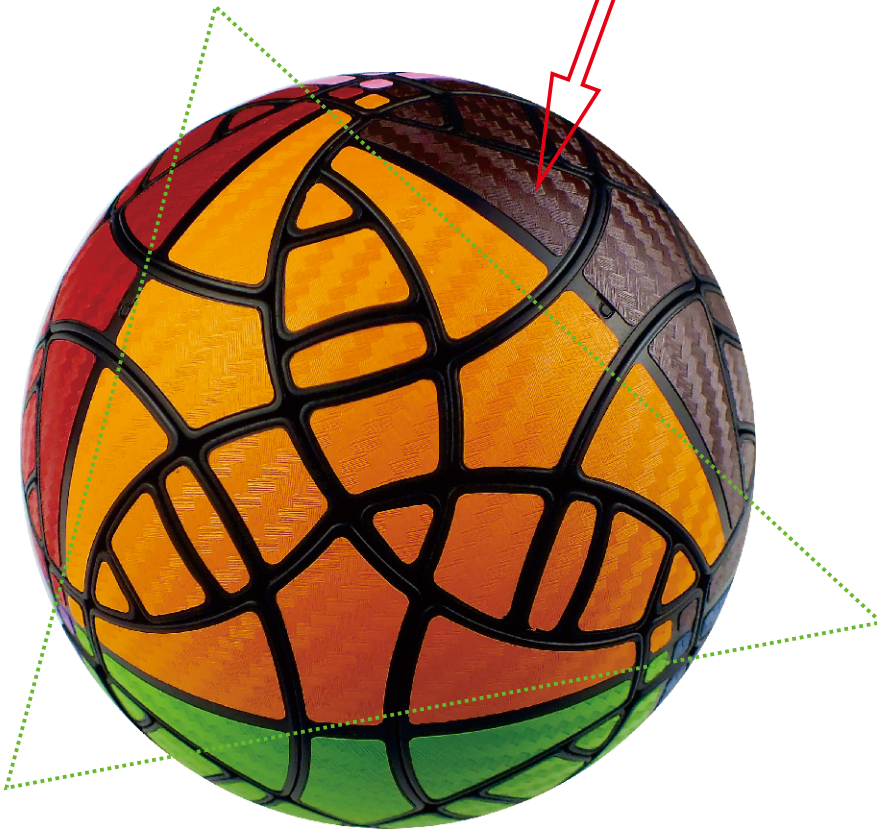
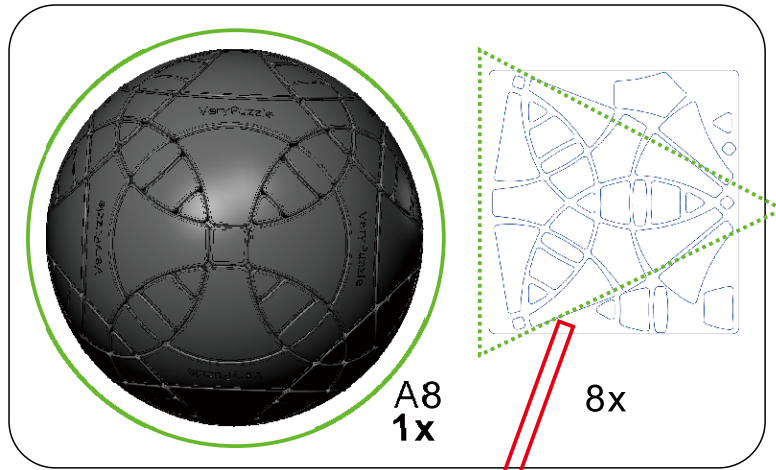
8



A8  
1x

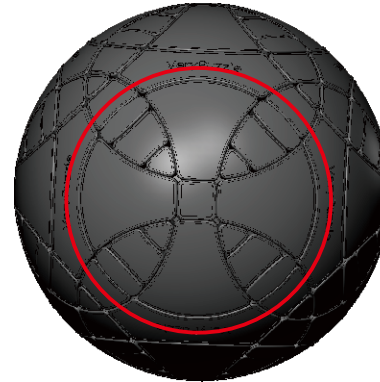


9

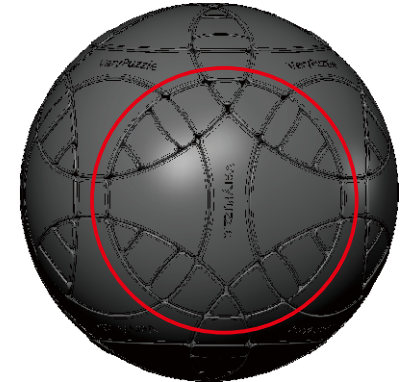


10

## Rotation Rules

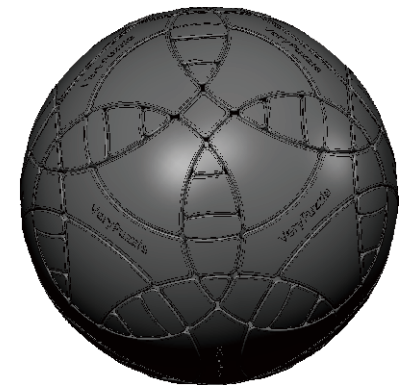
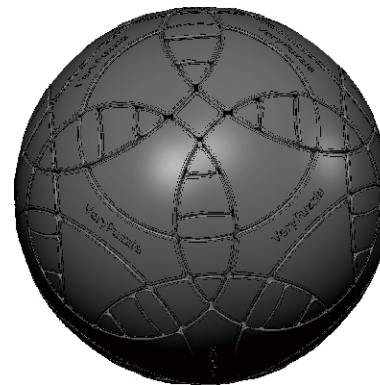


4-fold symmetry  
Turns  $90 \cdot n$  degrees

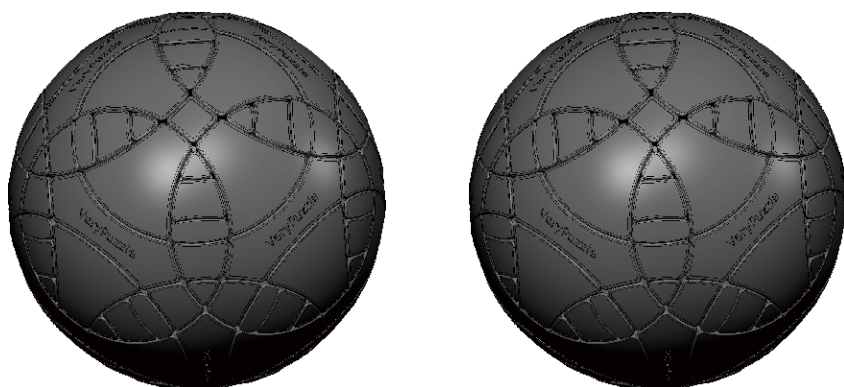
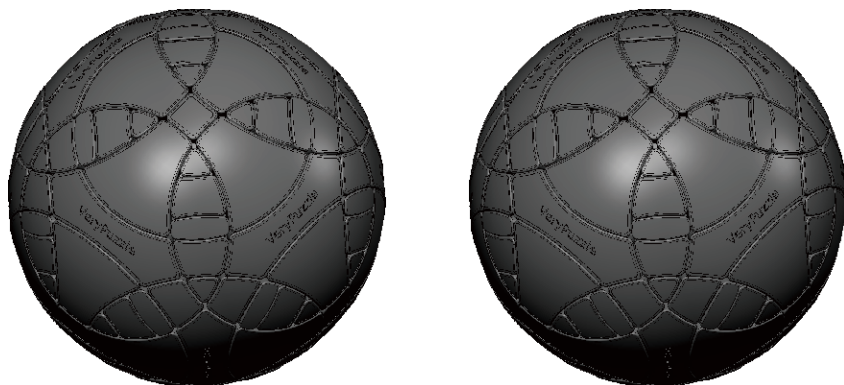


R4 symmetry  
Turns  $180 \cdot n$  degrees  
Turns  $180 \cdot n \pm 70.53$  degrees

## Notations and Algorithms

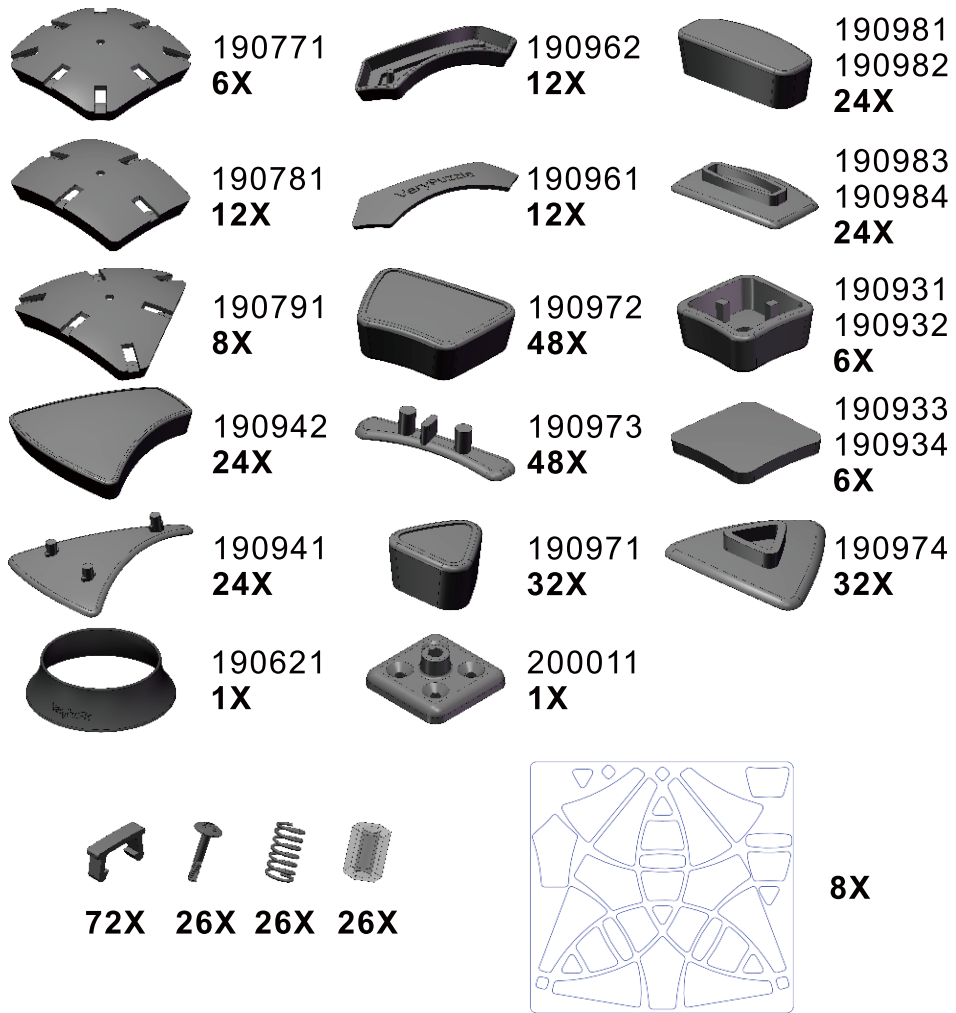


# Notations and Algorithms



## Product Information Card

<b>Product Name</b>	Crazy Chopper F1
<b>Model NO.</b>	#79
<b>Design</b>	VeryPuzzle Co., Ltd(HK)
<b>Manufacturer</b>	VeryPuzzle Co., Ltd(HK)
<b>Year of release</b>	2020
<b>Maximum diameter</b>	115 mm
<b>Visible moving parts</b>	146 pcs
<b>Assembly challenge</b>	★★★☆☆☆☆☆☆
<b>Solving challenge</b>	★★★☆☆☆☆☆☆
<b>Stickering strategy</b>	Voronoi, simplified
<b>Sticker material</b>	Textured
<b>Color scheme</b>	12 colors
<b>Sticker protection</b>	Yes
<b>Number of stickers</b>	200 pcs
<b>Axis &amp; Symmetry</b>	C(C4)+RD(R4)
<b>In-core spring</b>	Yes
<b>Adjustable tension</b>	No
<b>Technical Name</b>	C1RD5-M5-F1
<b>Topological Print</b>	C39RD39
<b>Core specification</b>	CORD100



## Customer Service

1. [support@verypuzzle.com](mailto:support@verypuzzle.com)



**VeryPuzzle**