

How to tighten the screws

1. It is always recommended to tighten the screws deep enough. The tighter the screws are, the more stable a puzzle will be (and probably more stiff while making turns).

2. Always leave a little bit of radial space along the screw so that the center cap can be lifted by around 1~2mm for single layered models.

**For those in-between models, like #65, #85, #88, #89, it is recommended to tighten further.

**For neat multiple layered models like #61, #75, #87, tighten the screws to their full depth.

3. Rules of thumb. Tension adjustment is in general dependent on personal judgement. Different tension could result in very different feel. Start with simple models and accumulate your own sense. Use different springs, screws, nuts if you think the default set can't provide your favorite handle.

4. Previous description of sticking screws out of nuts by 1-3mm is misleading in some cases and is not anymore recommended. Reason: the height of caps varies in different models.

VeryPuzzle
2021/08/06

VeryPuzzle

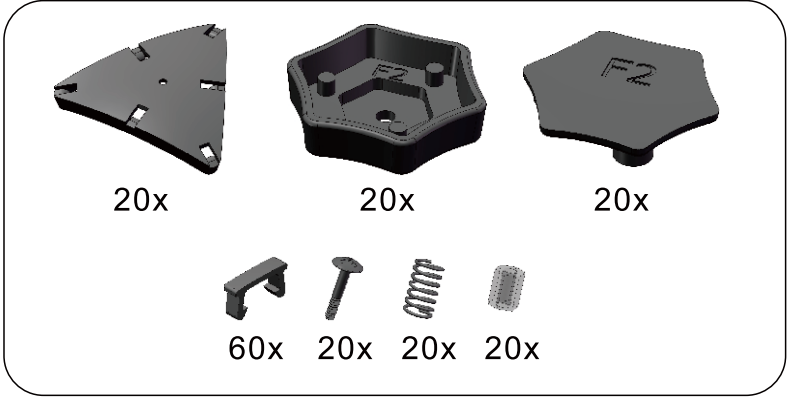


IRT V1.0 F2
I1RT1-M3-F2
#83

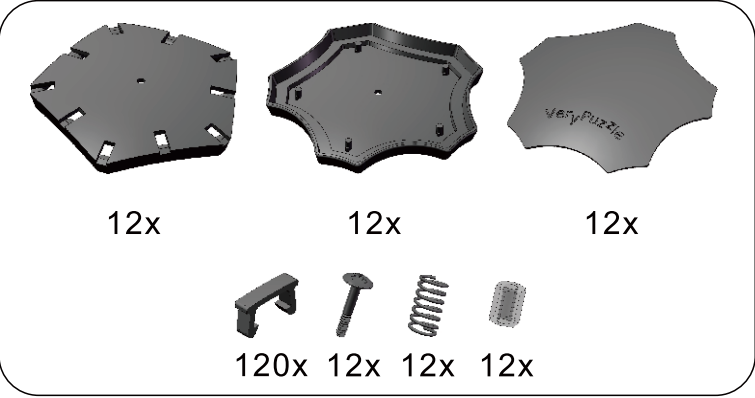
1000+ parts
50 axes



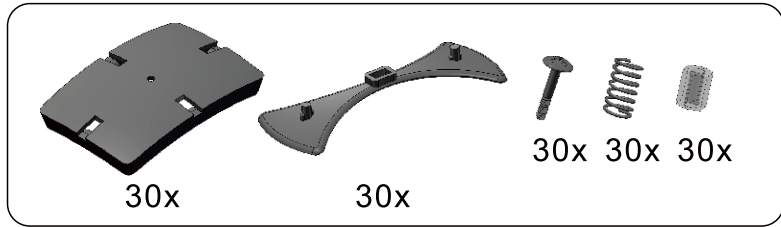
1



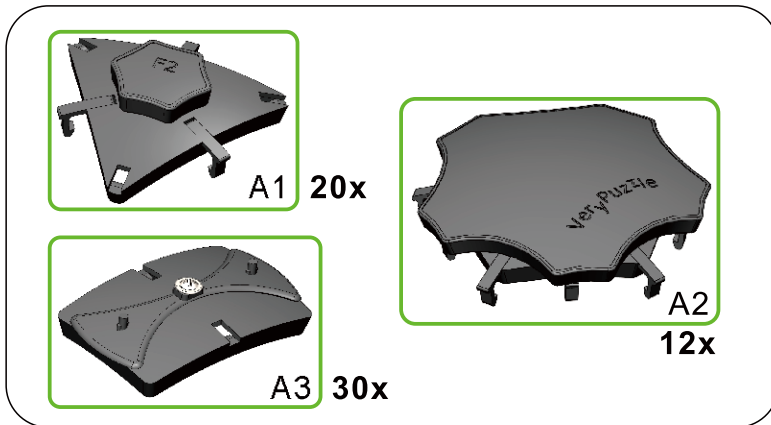
2



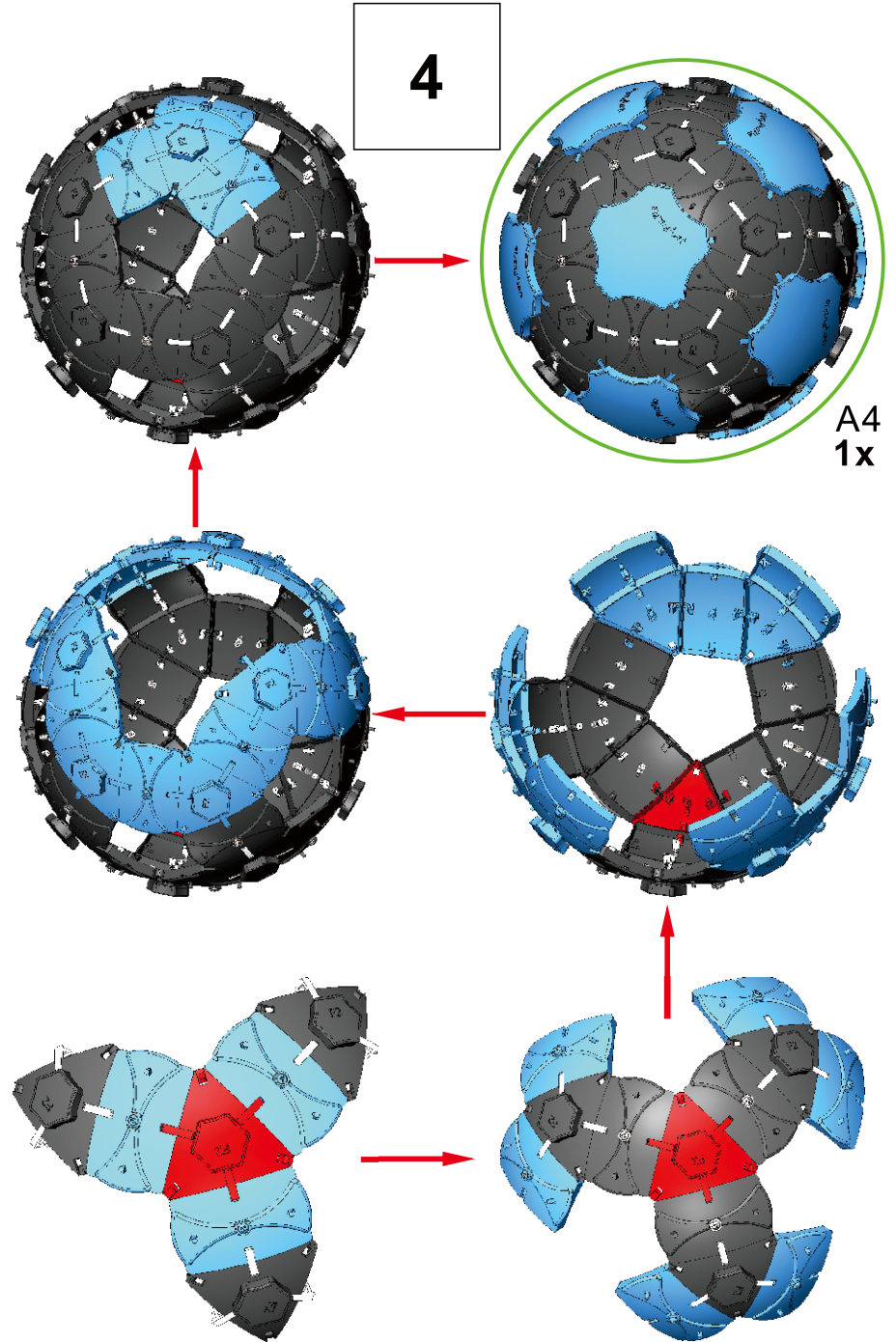
3



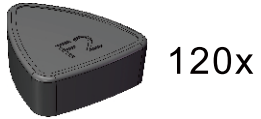
4



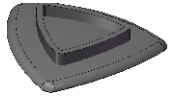
4



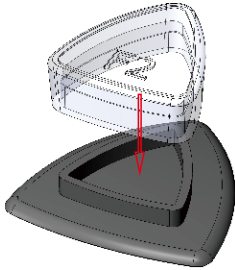
5



120x



120x



A5
120x

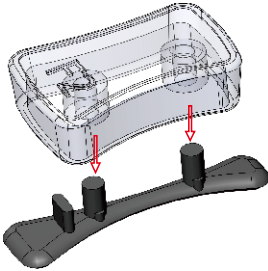
6



120x

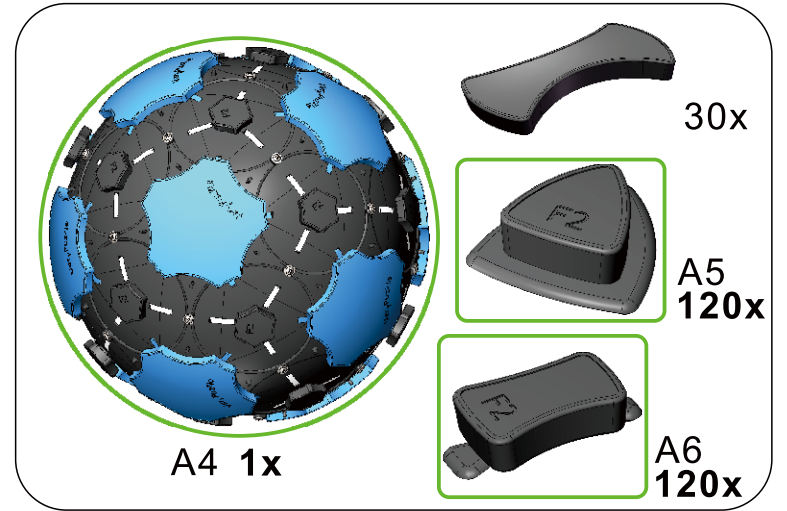


120x



A6
120x

7

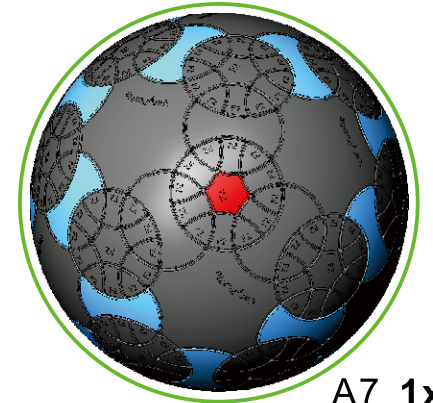
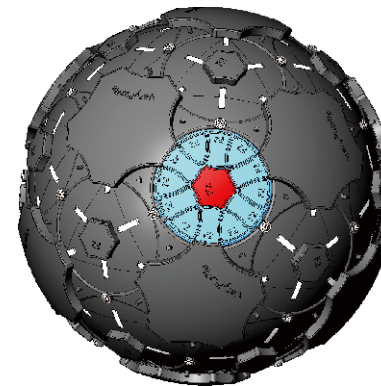


A4 1x

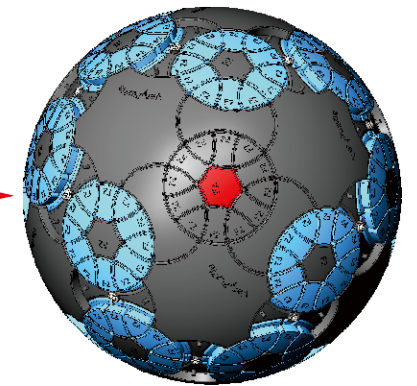
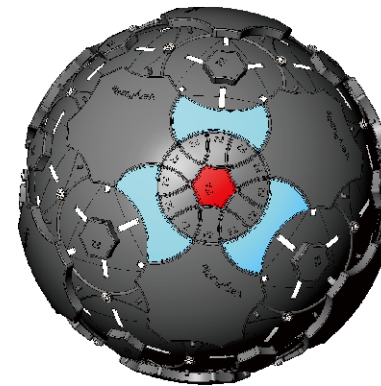
30x

A5
120x

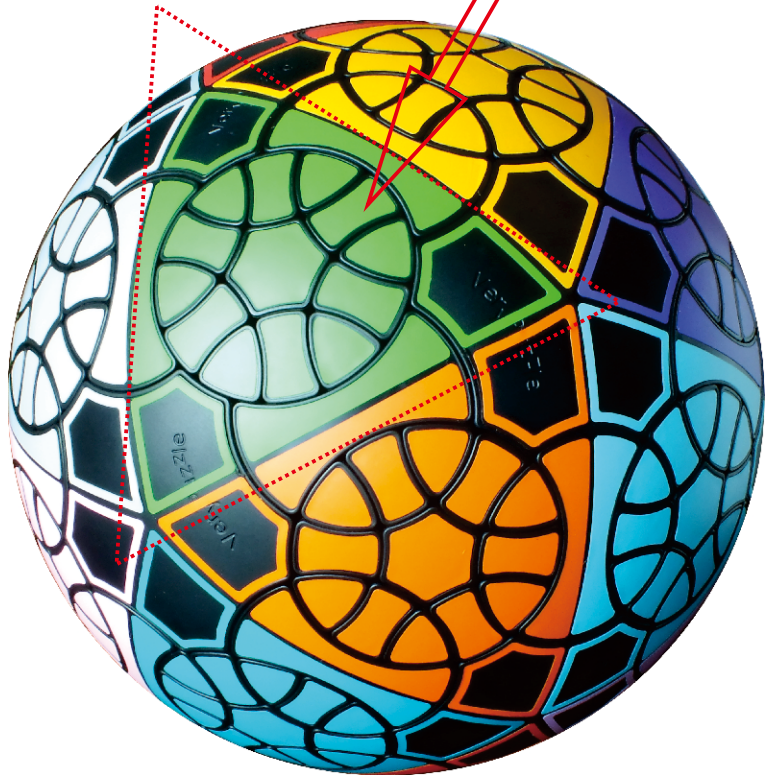
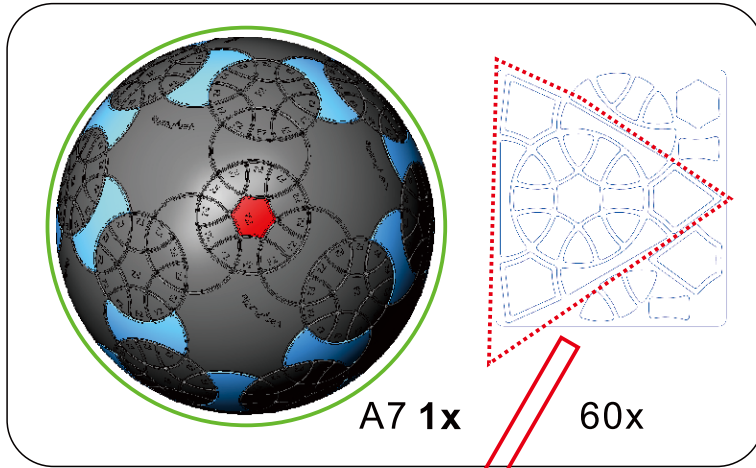
A6
120x



A7 1x

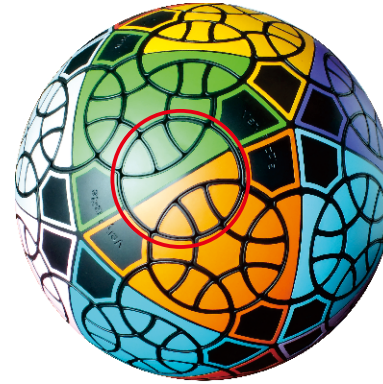


8



9

Rotation Rules

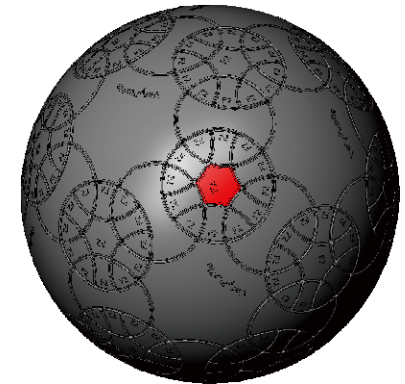
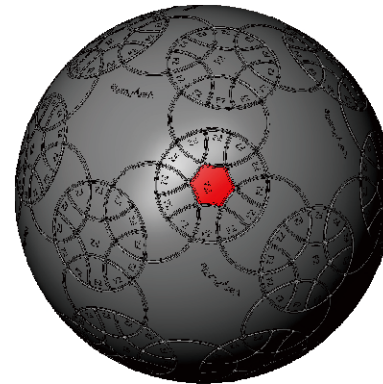


2-fold symmetry
Turns $180 \cdot n$ degrees

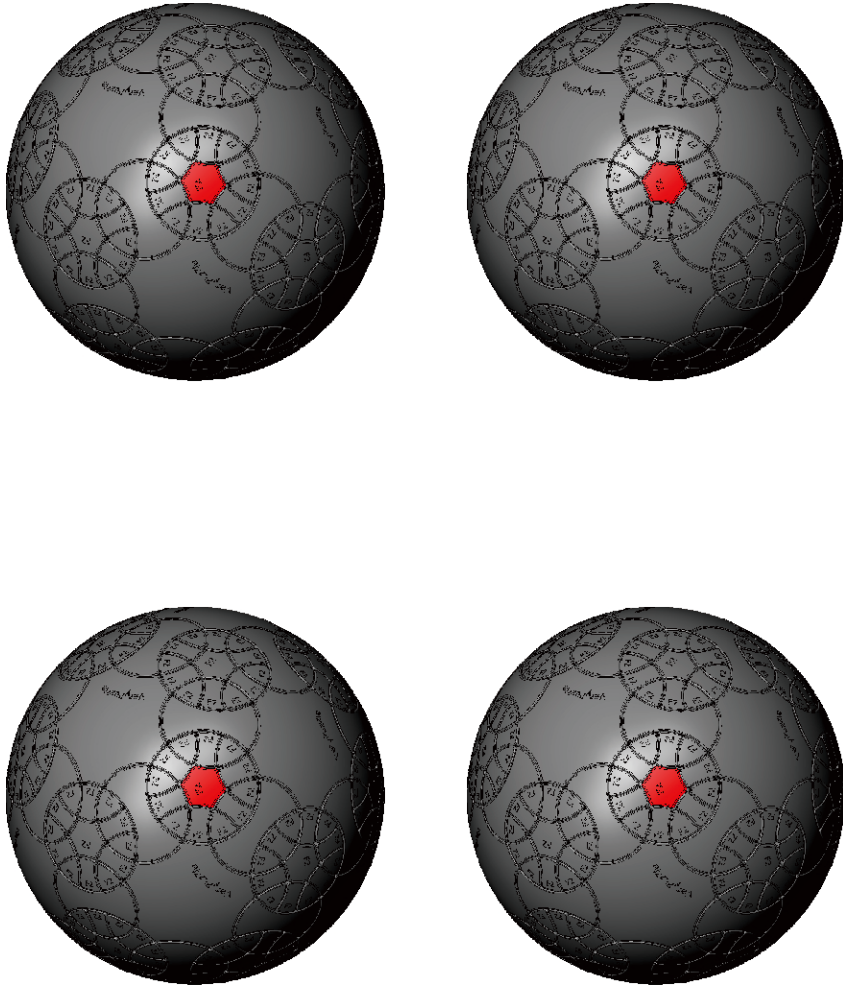


6-fold symmetry
Turns $60 \cdot n$ degrees

Notations and Algorithms

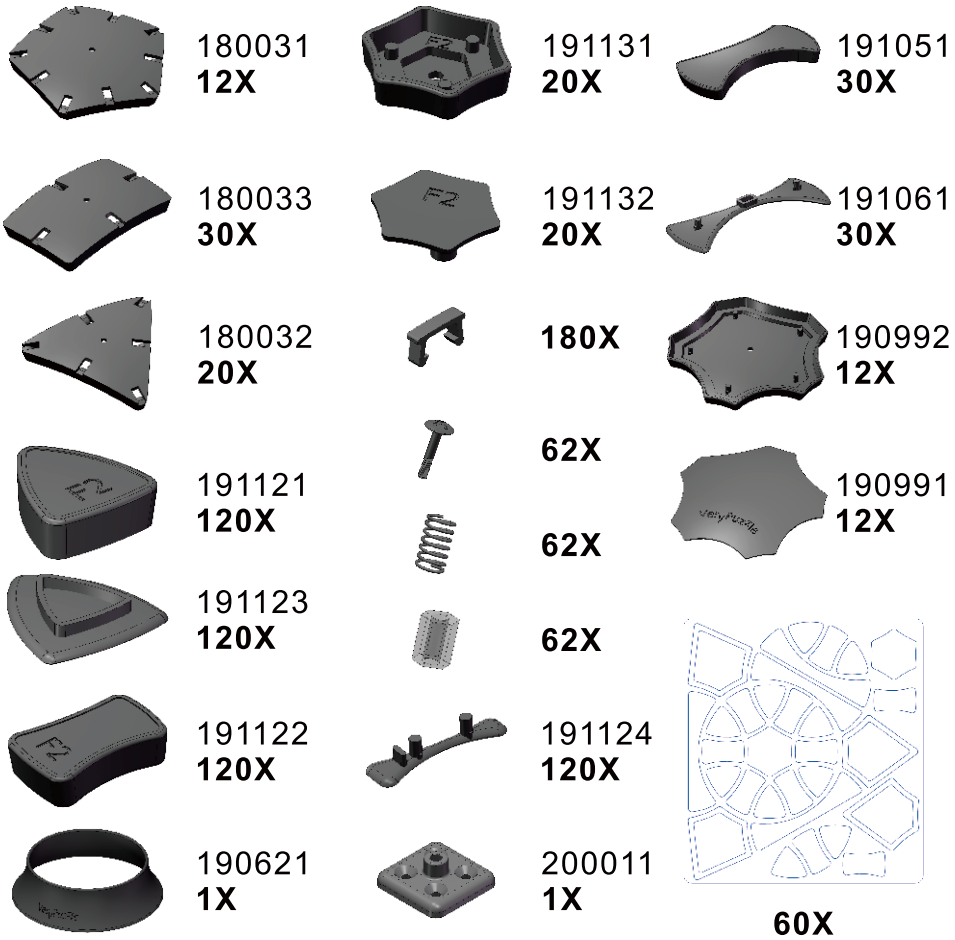


Notations and Algorithms



Product Information Card

| | |
|-----------------------------|-------------------------|
| Product Name | IRT V1.0 F2 |
| Model NO. | #83 |
| Design | VeryPuzzle Co., Ltd(HK) |
| Manufacturer | VeryPuzzle Co., Ltd(HK) |
| Year of release | 2020 |
| Maximum diameter | 195 mm |
| Visible moving parts | 302 pcs |
| Assembly challenge | ★★★★☆☆☆☆☆☆ |
| Solving challenge | ★★★★☆☆☆☆☆☆ |
| Stickers strategy | Voronoi, simplified |
| Sticker material | Uniform matte |
| Color scheme | 20 colors |
| Sticker protection | Yes |
| Number of stickers | 380 pcs |
| Axis & Symmetry | I(C6)+RT(C2) |
| In-core spring | Yes |
| Adjustable tension | No |
| Topological Print | I17RT15 |
| Core specification | DIRT180 |



Customer Service

1. support@verypuzzle.com



VeryPuzzle