

## How to tighten the screws

1. It is always recommended to tighten the screws deep enough. The tighter the screws are, the more stable a puzzle will be (and probably more stiff while making turns).

2. Always leave a little bit of radial space along the screw so that the center cap can be lifted by around 1~2mm for single layered models.

**\*\*For those in-between models, like #65, #85, #88, #89, it is recommended to tighten further.**

**\*\*For neat multiple layered models like #61, #75, #87, tighten the screws to their full depth.**

3. Rules of thumb. Tension adjustment is in general dependent on personal judgement. Different tension could result in very different feel. Start with simple models and accumulate your own sense. Use different springs, screws, nuts if you think the default set can't provide your favorite handle.

4. Previous description of sticking screws out of nuts by 1-3mm is misleading in some cases and is not anymore recommended. Reason: the height of caps varies in different models.

VeryPuzzle  
2021/08/06

# VeryPuzzle

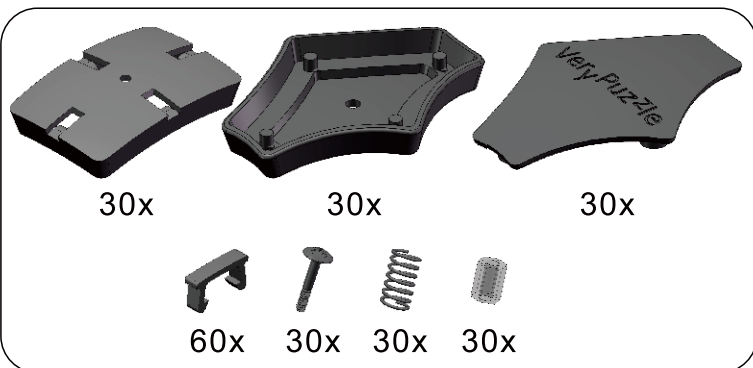


**Rhombic Tuttminx F2**  
**D1RT5-M5-F2**  
**#85**

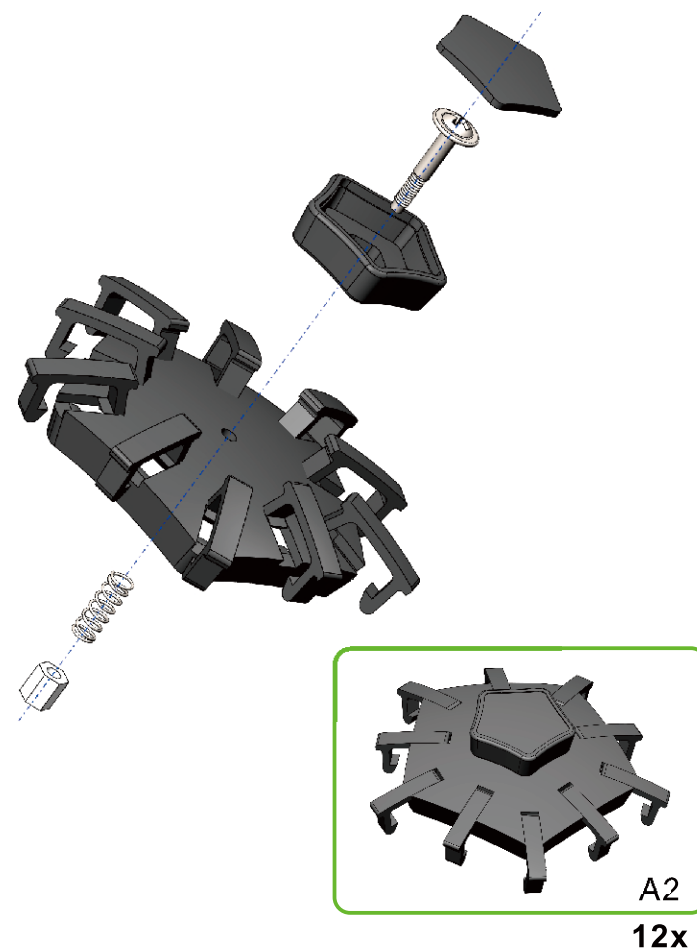
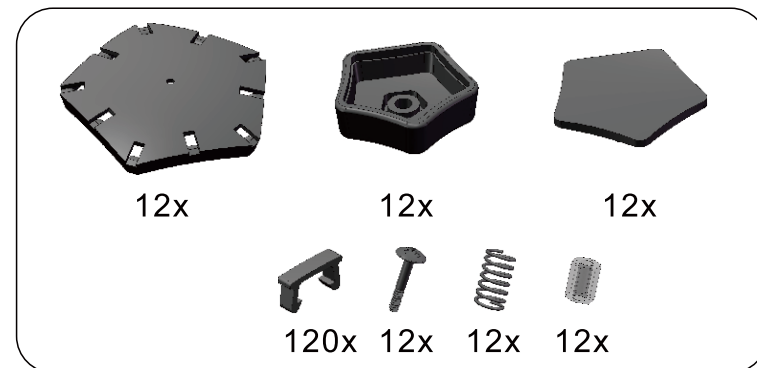
900+ parts  
40 axes



1



2

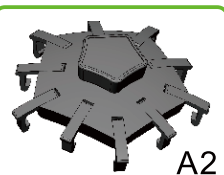


3



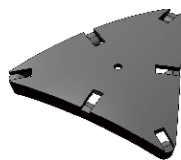
A1

30x

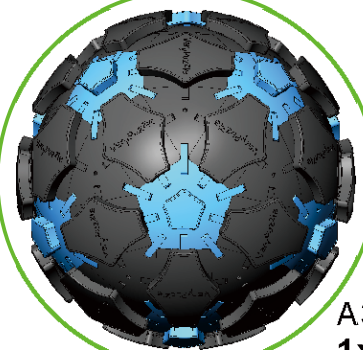
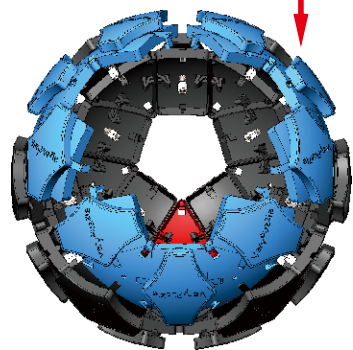
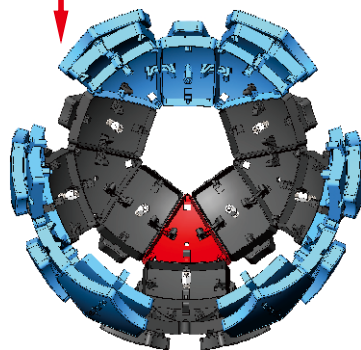
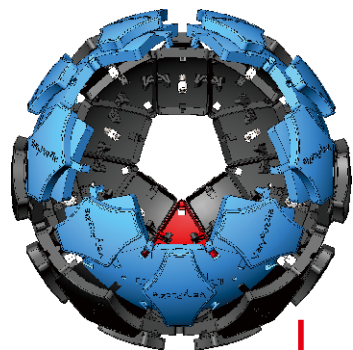
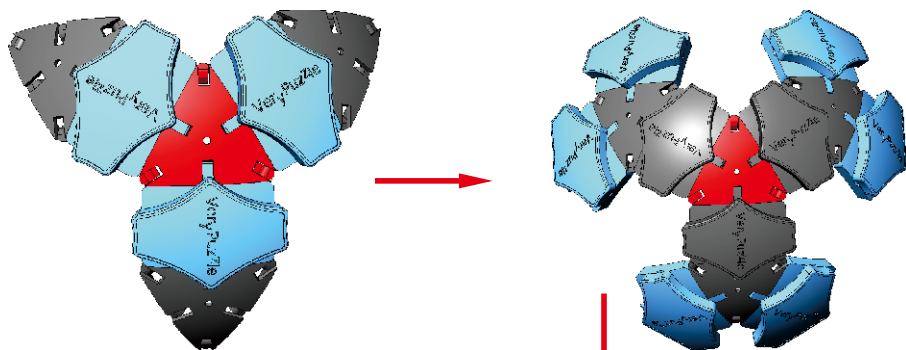


A2

12x



20x



A3

1x

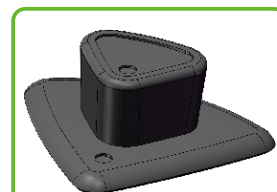
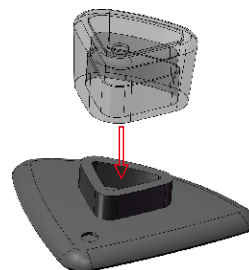
4



60x



60x



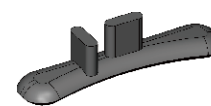
A4

60x

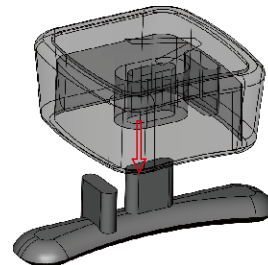
5



60x



60x



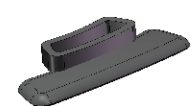
A5

60x

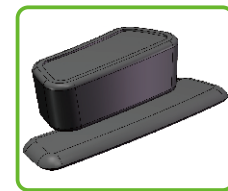
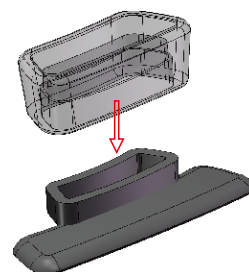
6



60x



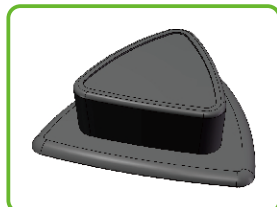
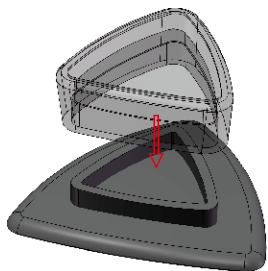
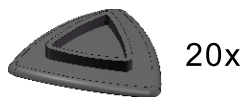
60x



A6

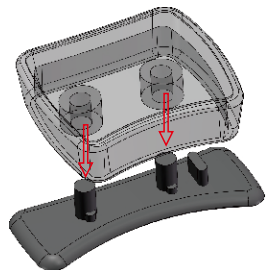
60x

7



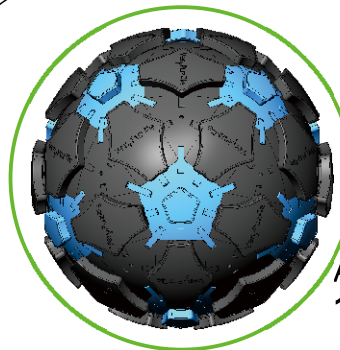
A7  
20x

8

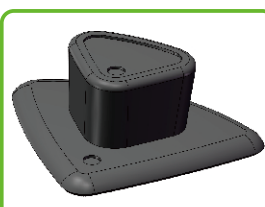


A8  
60x

9



A3  
1x



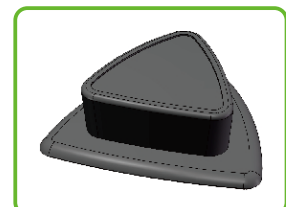
A4  
60x



A6  
60x



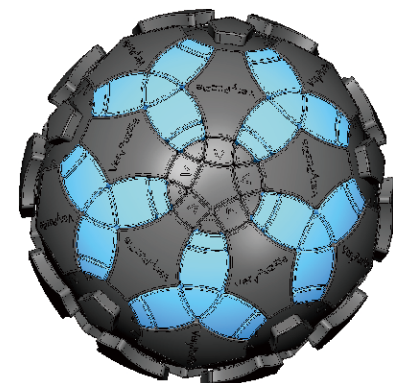
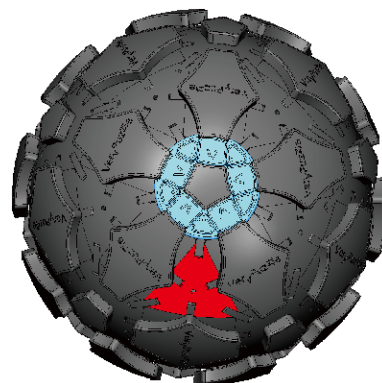
A5  
60x



A7  
20x

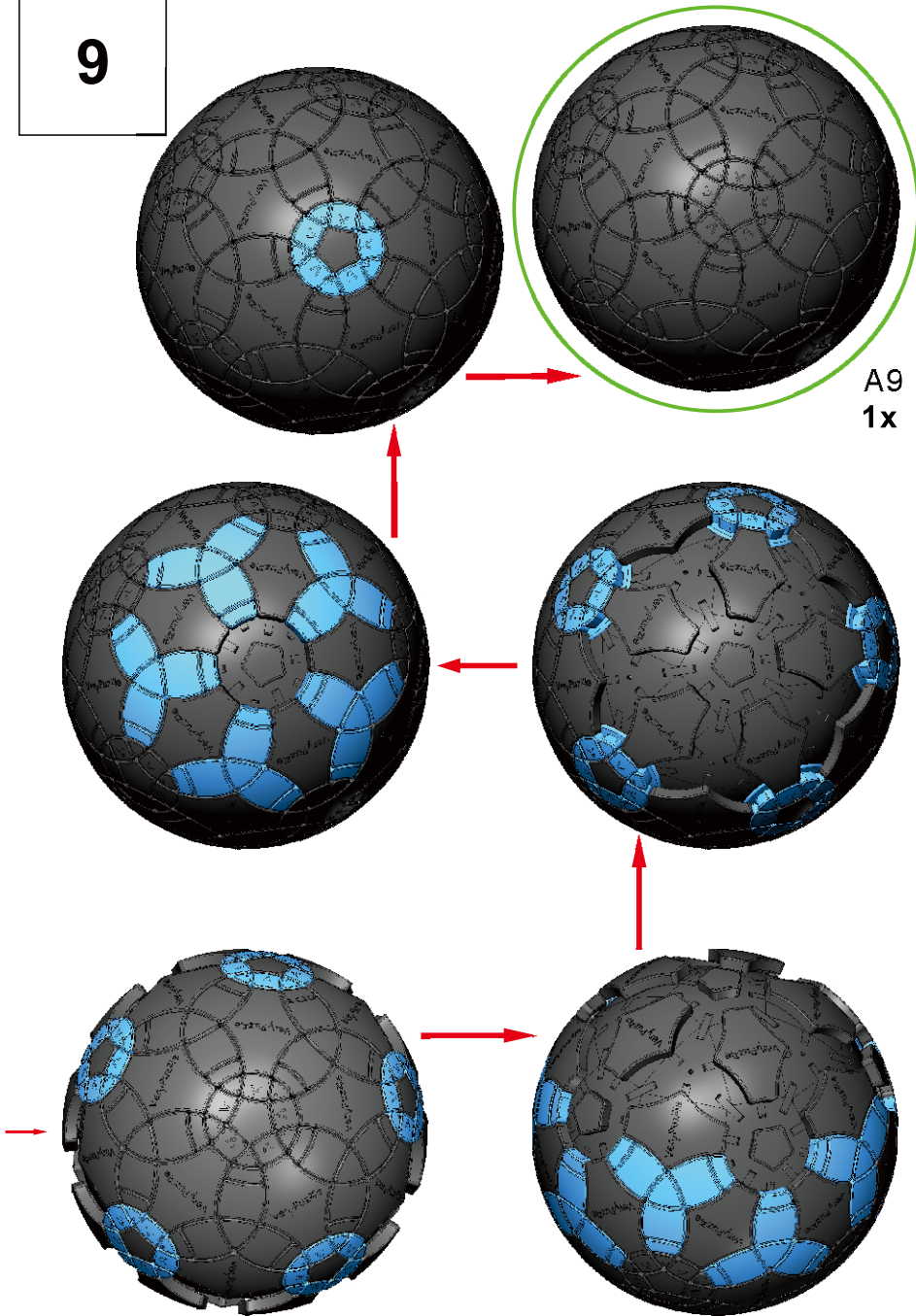


A8 60x

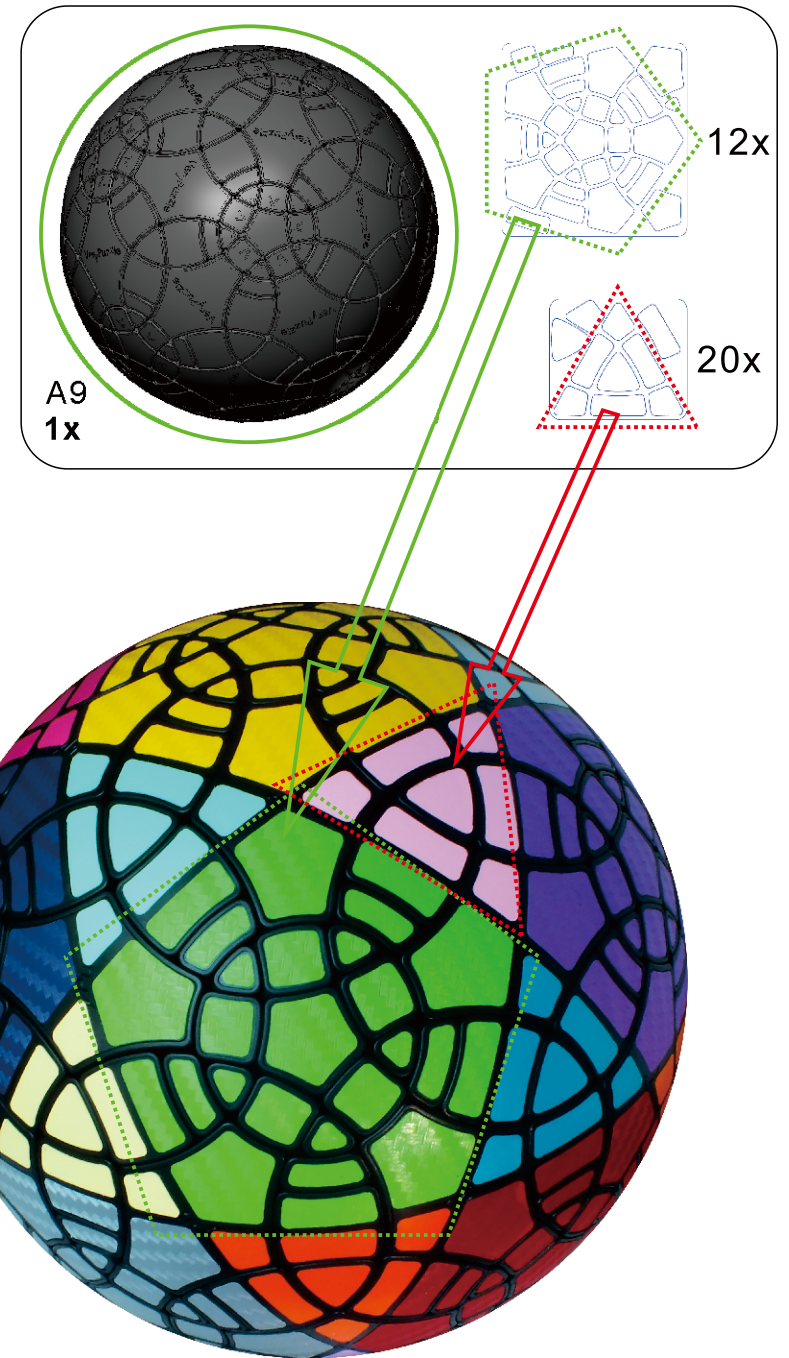




9



10



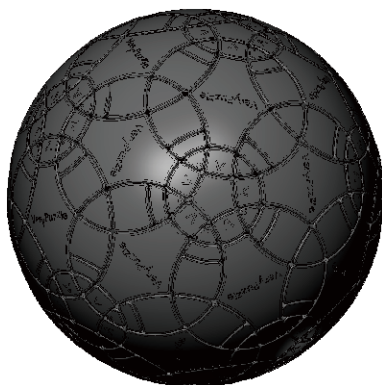
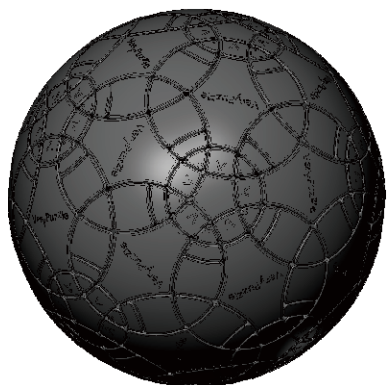


R4 symmetry  
Turns  $180 \cdot n$  degrees  
Turns  $180 \cdot n + 63.4$  degrees



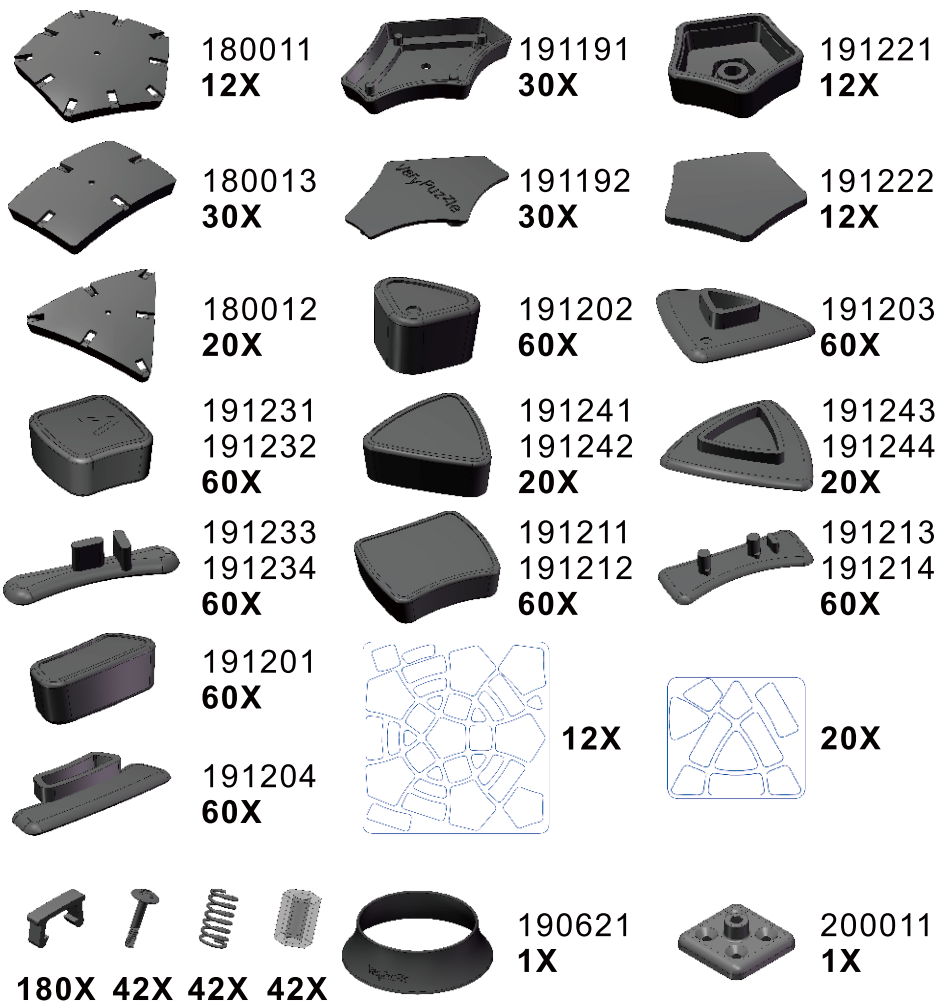
5-fold symmetry  
Turns  $72 \cdot n$  degrees

## Notations and Algorithms



## Product Information Card

<b>Product Name</b>	Rhombic Tuttminx F2
<b>Model NO.</b>	#85
<b>Design</b>	VeryPuzzle Co., Ltd(HK)
<b>Manufacturer</b>	VeryPuzzle Co., Ltd(HK)
<b>Year of release</b>	2020
<b>Maximum diameter</b>	145 mm
<b>Visible moving parts</b>	302 pcs
<b>Assembly challenge</b>	★★★★☆☆☆☆
<b>Solving challenge</b>	★★★★☆☆☆☆
<b>Stickering strategy</b>	Voronoi, simplified
<b>Sticker material</b>	Textured & Uniform matte
<b>Color scheme</b>	32 colors
<b>Sticker protection</b>	Yes
<b>Number of stickers</b>	452 pcs
<b>Axis &amp; Symmetry</b>	D(C5)+RT(R4)
<b>In-core spring</b>	Yes
<b>Adjustable tension</b>	No
<b>Technical Name</b>	D1RT5-M5-F2
<b>Topological Print</b>	D15RT25.5
<b>Core specification</b>	DIRT130



## Customer Service

1. [support@verypuzzle.com](mailto:support@verypuzzle.com)



**VeryPuzzle**