

How to tighten the screws

1. It is always recommended to tighten the screws deep enough. The tighter the screws are, the more stable a puzzle will be (and probably more stiff while making turns).

2. Always leave a little bit of radial space along the screw so that the center cap can be lifted by around 1~2mm for single layered models.

****For those in-between models, like #65, #85, #88, #89, it is recommended to tighten further.**

****For neat multiple layered models like #61, #75, #87, tighten the screws to their full depth.**

3. Rules of thumb. Tension adjustment is in general dependent on personal judgement. Different tension could result in very different feel. Start with simple models and accumulate your own sense. Use different springs, screws, nuts if you think the default set can't provide your favorite handle.

4. Previous description of sticking screws out of nuts by 1-3mm is misleading in some cases and is not anymore recommended. Reason: the height of caps varies in different models.

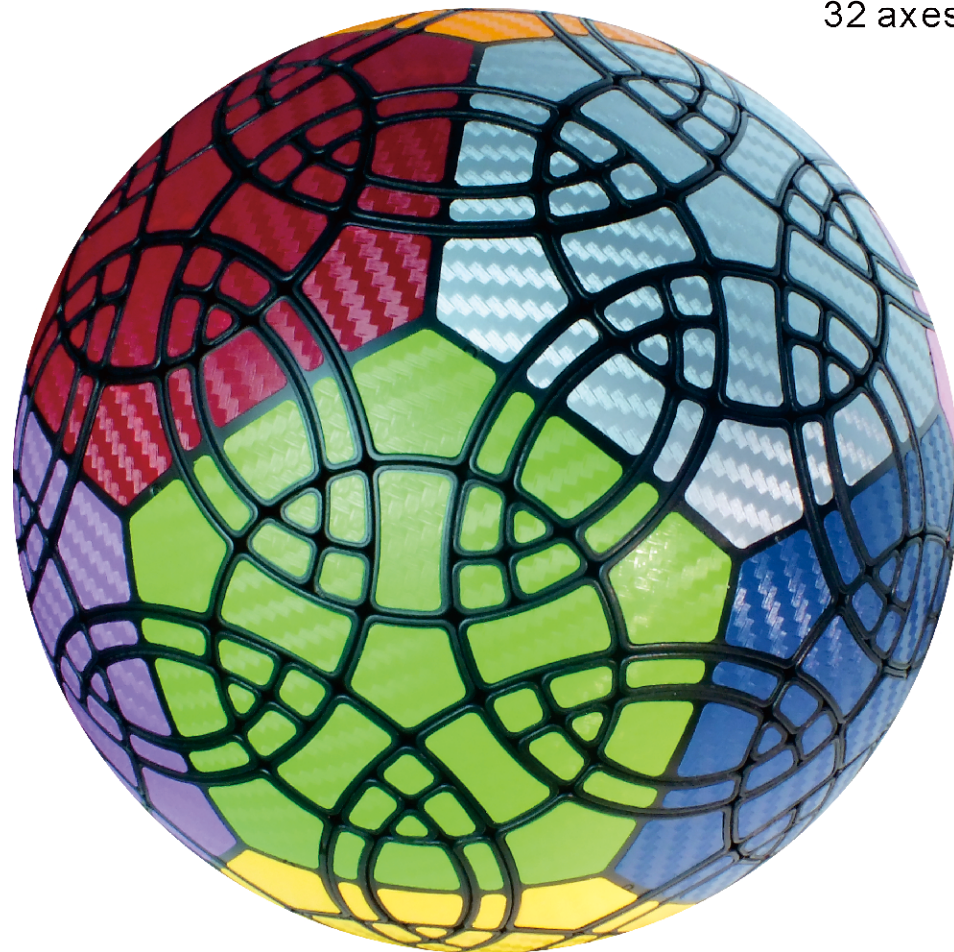
VeryPuzzle
2021/08/06

VeryPuzzle

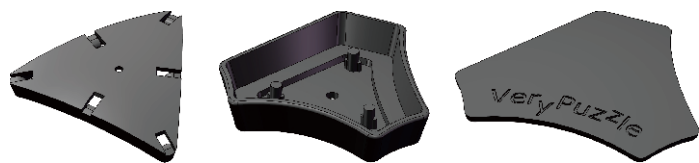


Tuttminx F1
D1I3-M5-F1
#88

1000+ parts
32 axes



1



20x

20x

20x



60x



20x



20x



20x



A1

20x

2



12x

12x

12x



120x



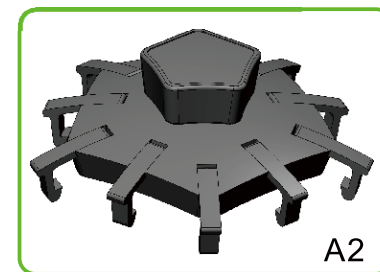
12x



12x



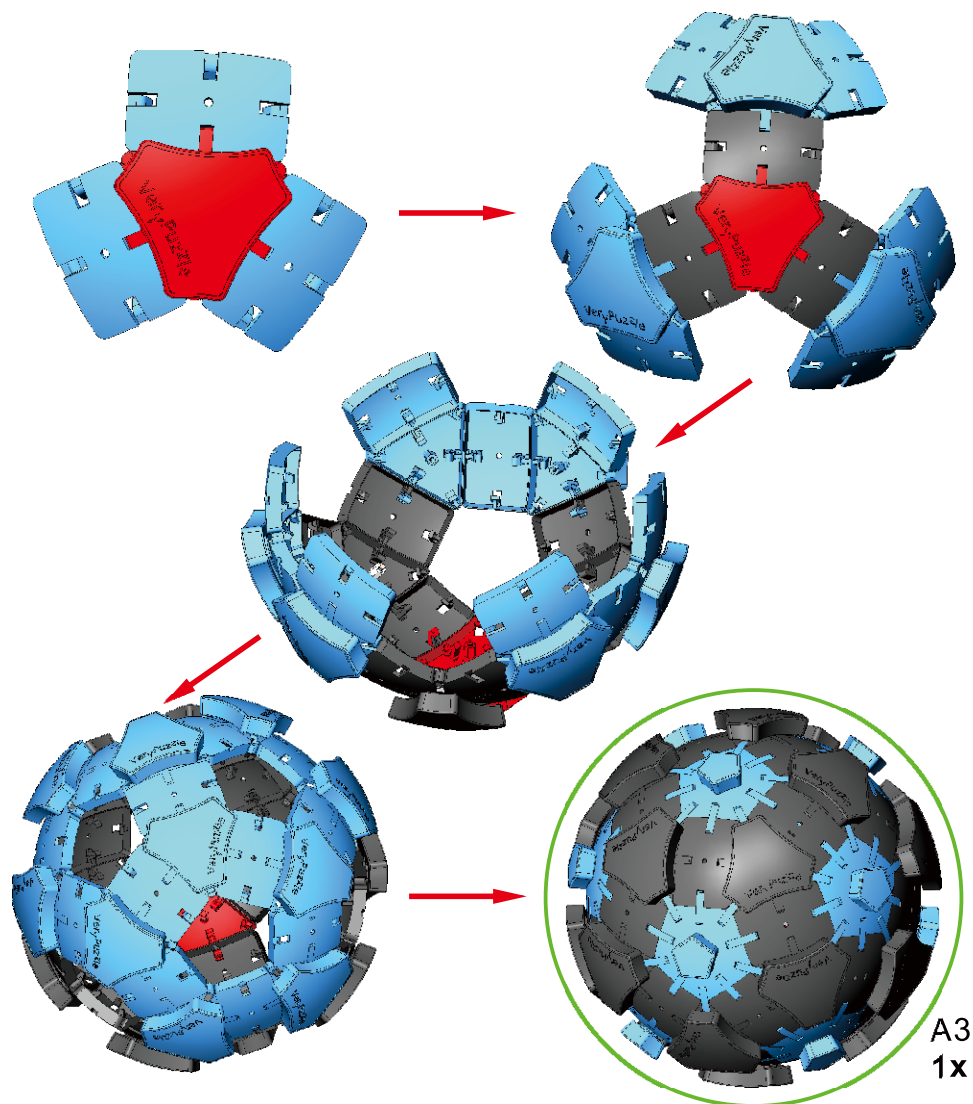
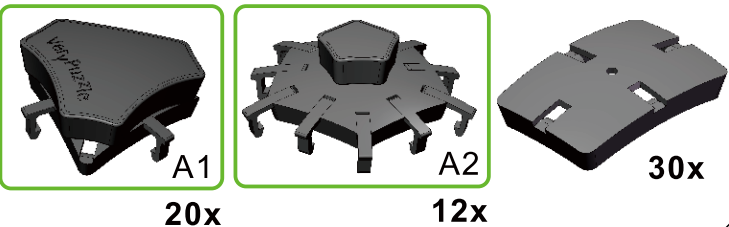
12x



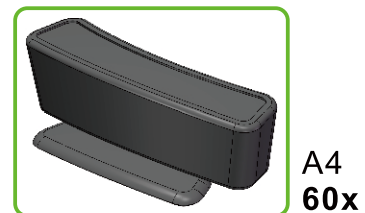
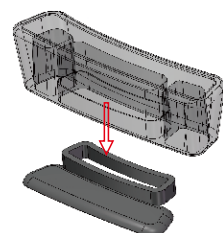
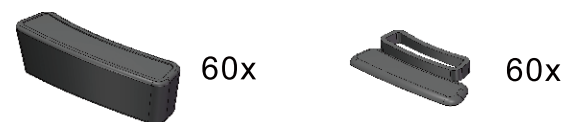
A2

12x

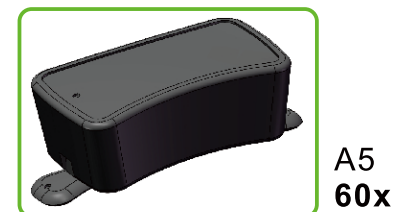
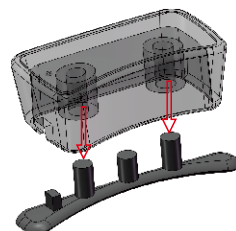
3



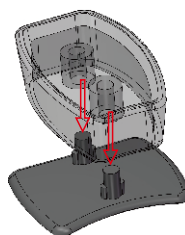
4



5



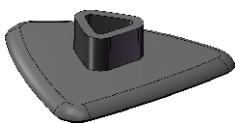
6



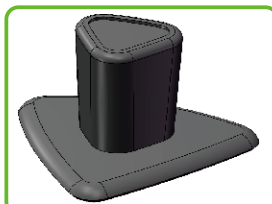
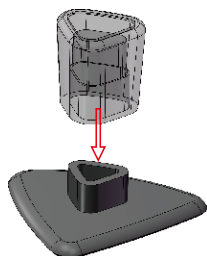
7



60x



60x

A7
60x

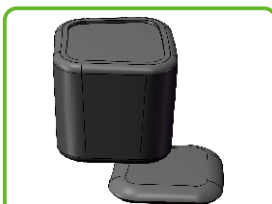
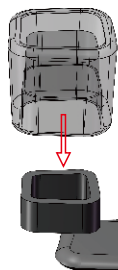
8



60x



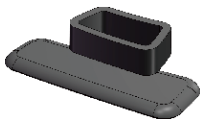
60x

A8
60x

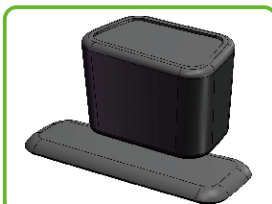
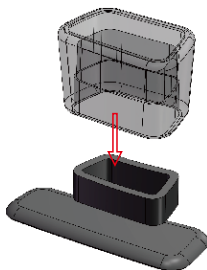
9



60x



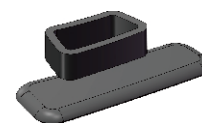
60x

A9
60x

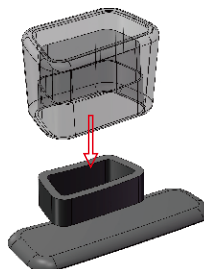
10



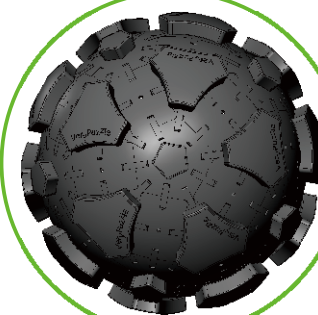
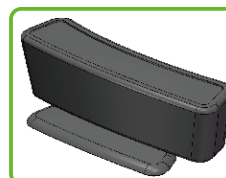
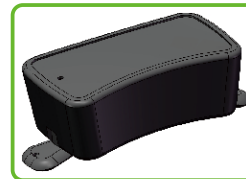
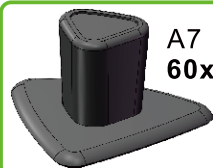
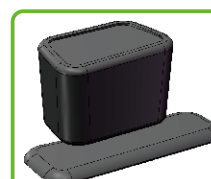
60x



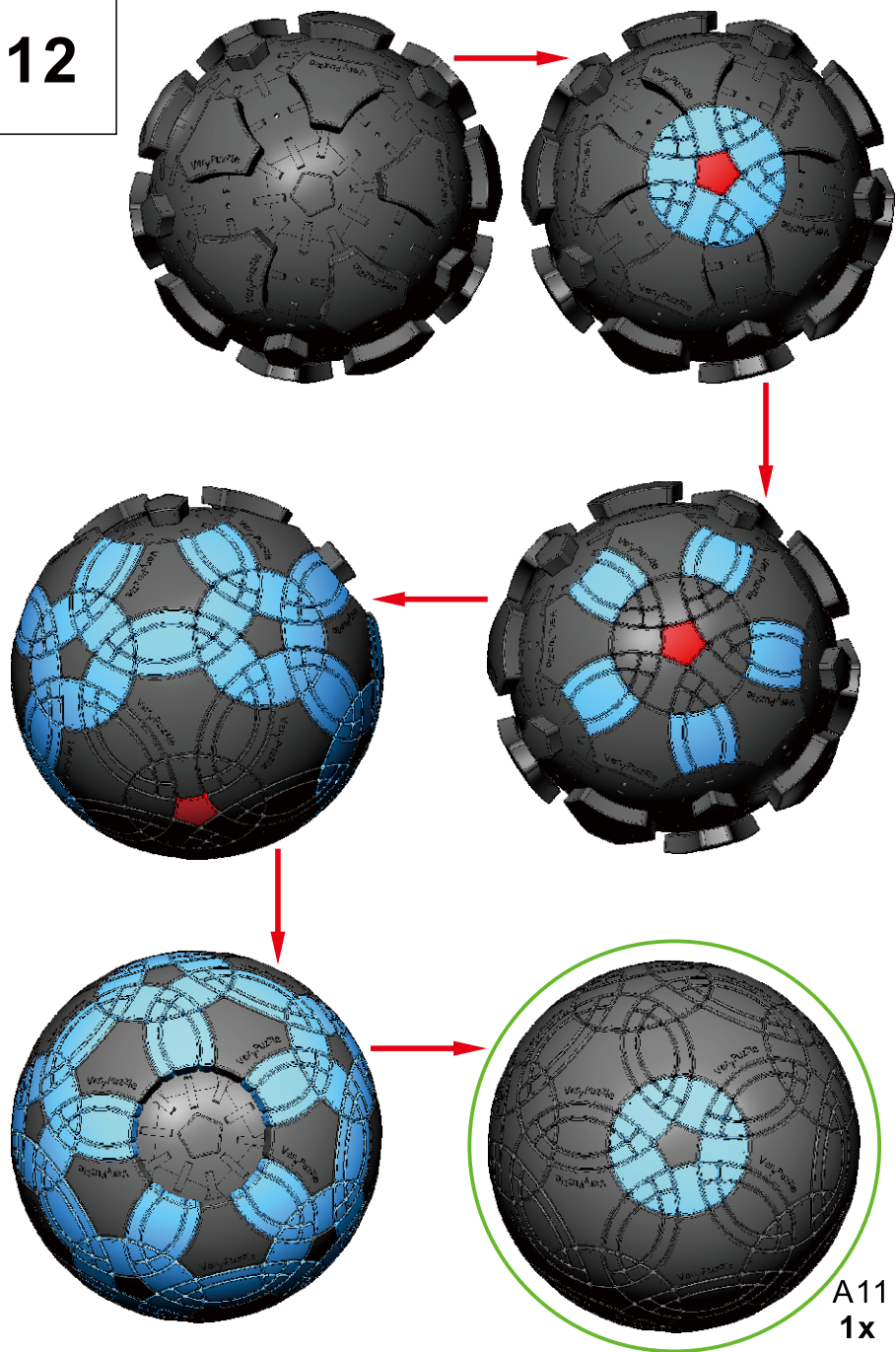
60x

A10
60x

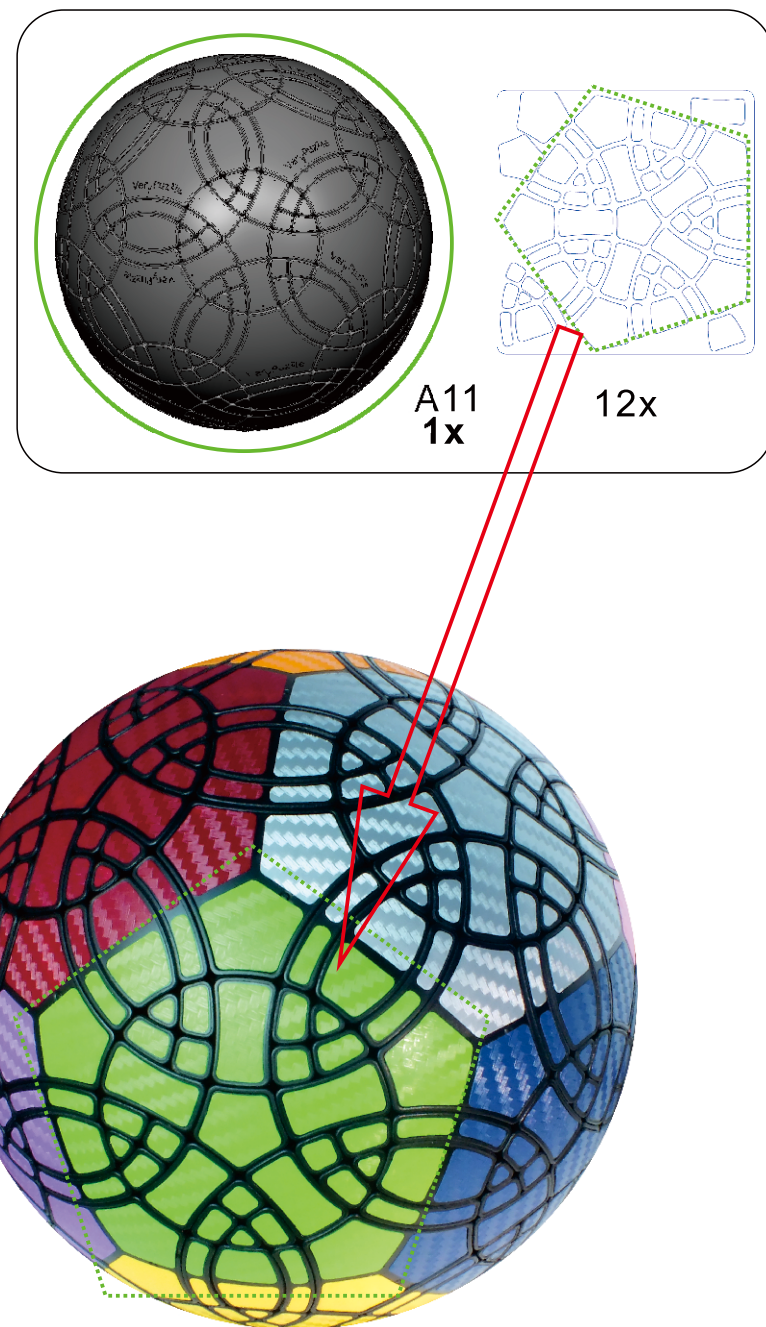
11

A3
1xA4
60xA5
60xA7
60xA6
30xA9
60xA10
60xA8
60x

12



13



14

Rotation Rules

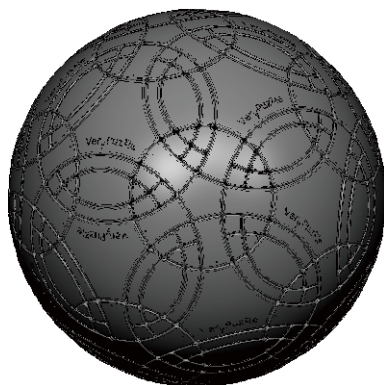
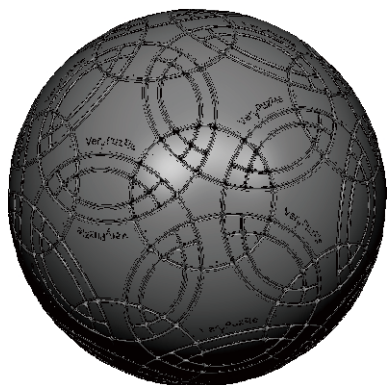


6-fold symmetry
Turns $60 \cdot n$ degrees



5-fold symmetry
Turns $72 \cdot n$ degrees

Notations and Algorithms



Product Information Card

Product Name	Tuttminx F1
Model NO.	#88
Design	VeryPuzzle Co., Ltd(HK)
Manufacturer	VeryPuzzle Co., Ltd(HK)
Year of release	2020
Maximum diameter	145 mm
Visible moving parts	362 pcs
Assembly challenge	★★★★☆☆☆☆
Solving challenge	★★★★☆☆☆☆
Stickering strategy	Voronoi, simplified
Sticker material	Textured
Color scheme	12 colors
Sticker protection	Yes
Number of stickers	492 pcs
Axis & Symmetry	D(C5)+I(C6)
In-core spring	Yes
Adjustable tension	No
Technical Name	D1I3-M5-F1
Topological Print	D22I31
Core specification	DIRT130



Customer Service

1. support@verypuzzle.com

