

How to tighten the screws

1. It is always recommended to tighten the screws deep enough. The tighter the screws are, the more stable a puzzle will be (and probably more stiff while making turns).

2. Always leave a little bit of radial space along the screw so that the center cap can be lifted by around 1~2mm for single layered models.

**For those in-between models, like #65, #85, #88, #89, it is recommended to tighten further.

**For neat multiple layered models like #61, #75, #87, tighten the screws to their full depth.

3. Rules of thumb. Tension adjustment is in general dependent on personal judgement. Different tension could result in very different feel. Start with simple models and accumulate your own sense. Use different springs, screws, nuts if you think the default set can't provide your favorite handle.

4. Previous description of sticking screws out of nuts by 1-3mm is misleading in some cases and is not anymore recommended. Reason: the height of caps varies in different models.

VeryPuzzle
2021/08/06

VeryPuzzle

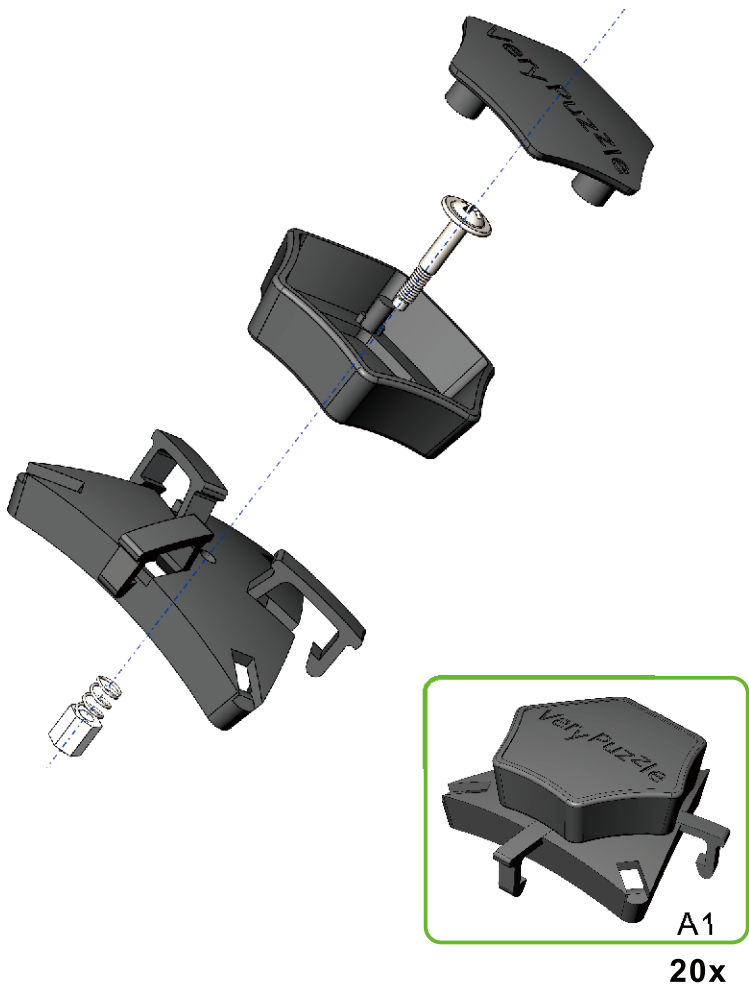
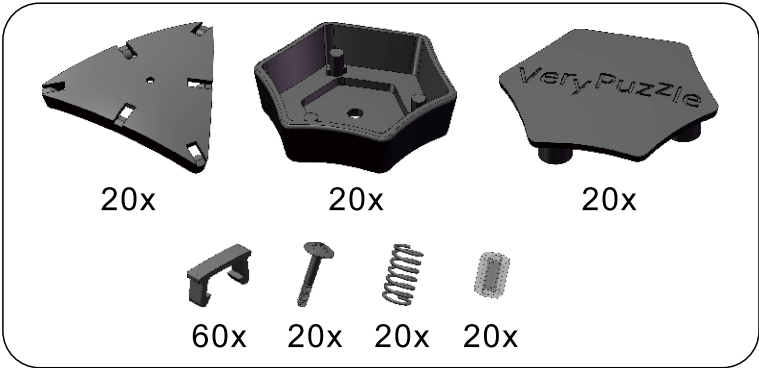


Tuttminx F2
D1I3-M5-F2
#89

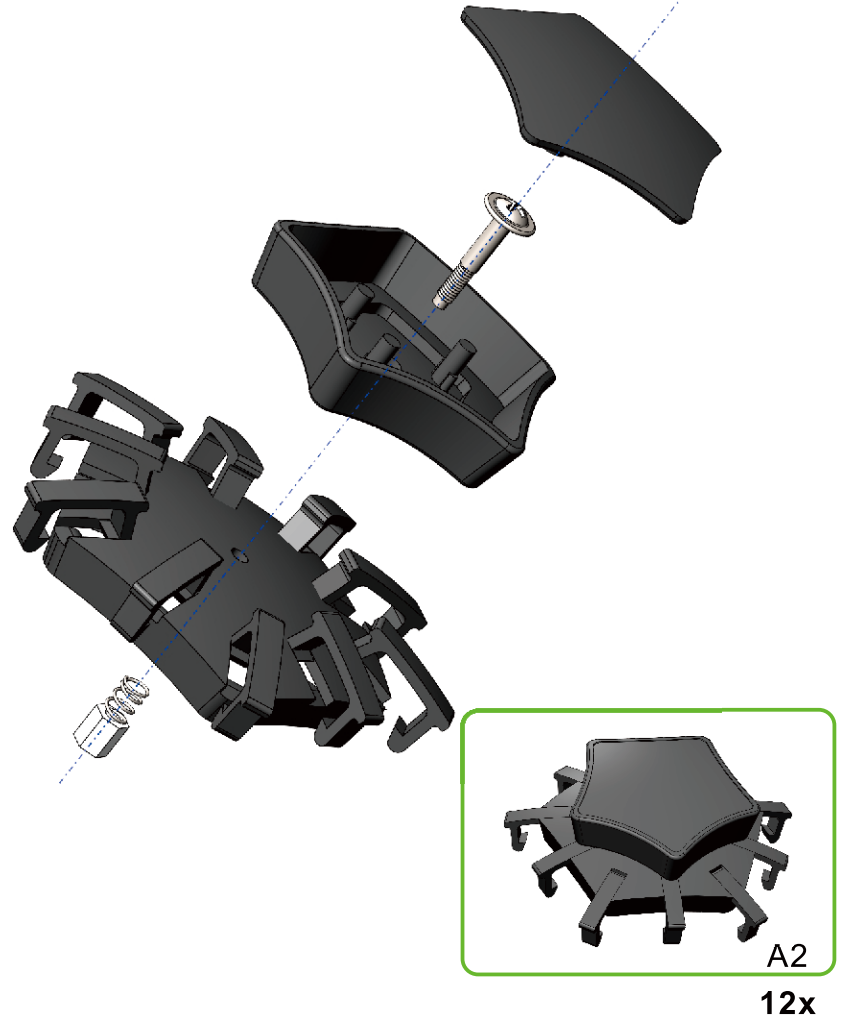
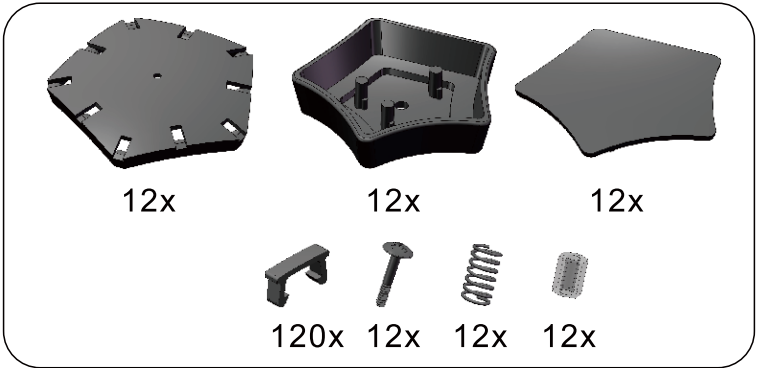
1000+ parts
32 axes



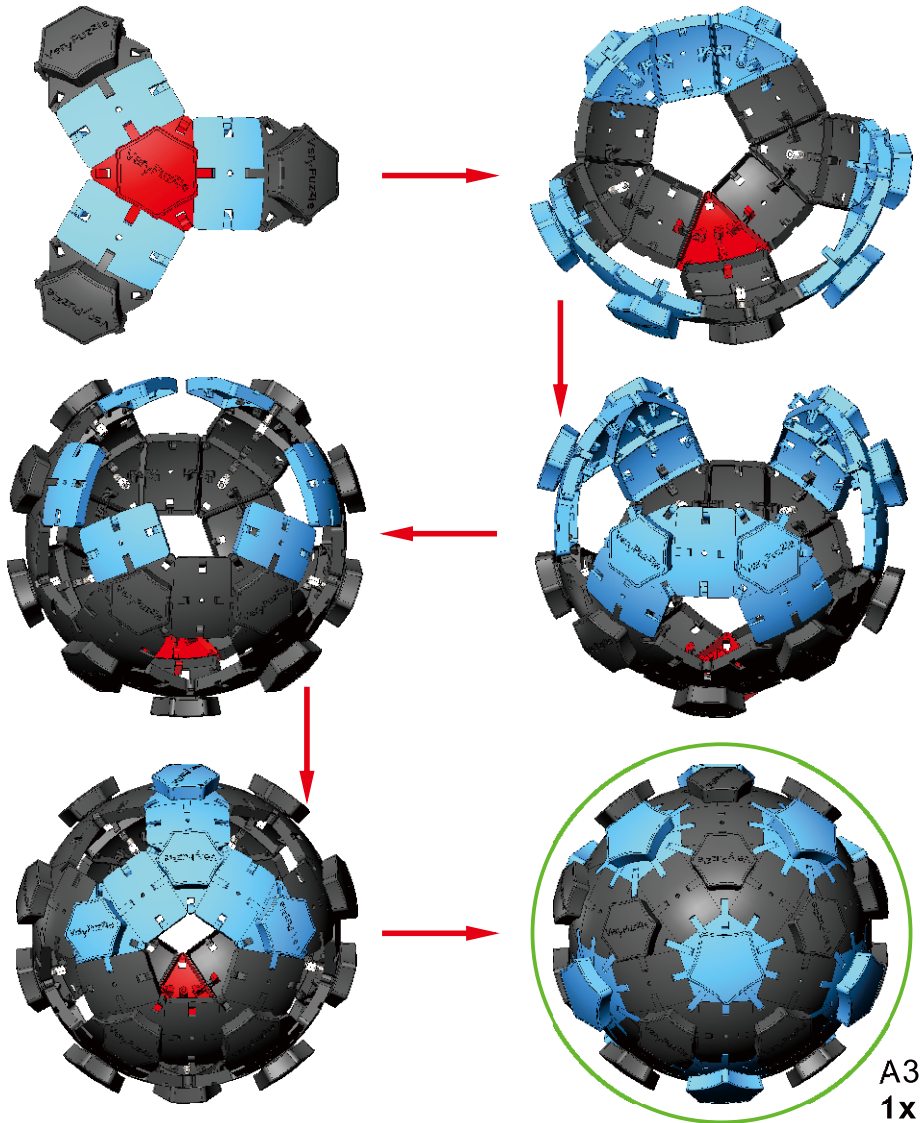
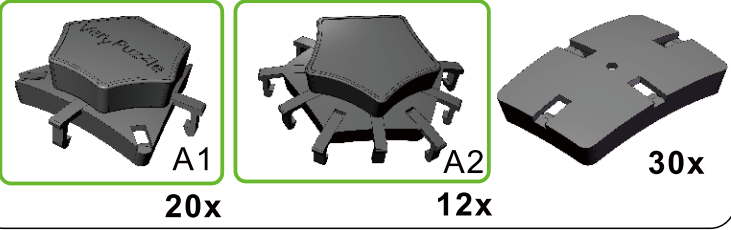
1



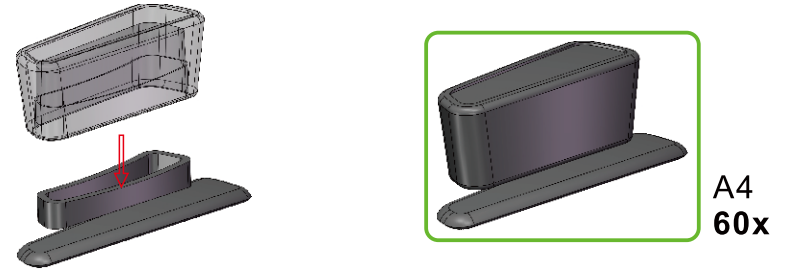
2



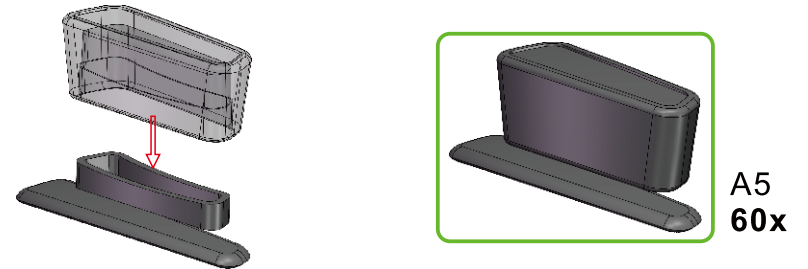
3



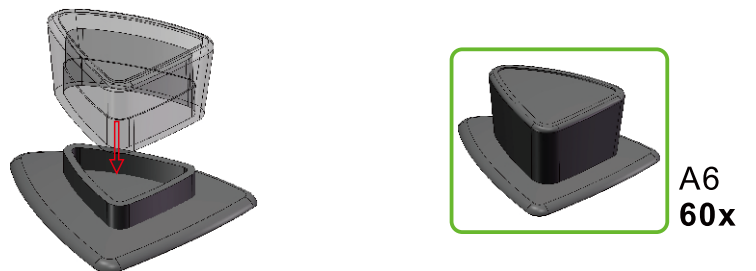
4



5



6



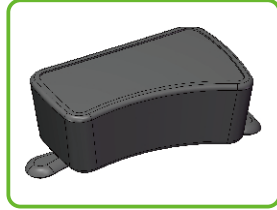
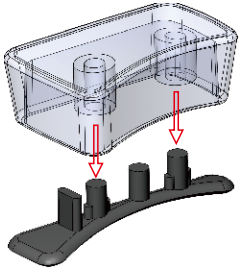
7



60x



60x



A7
60x

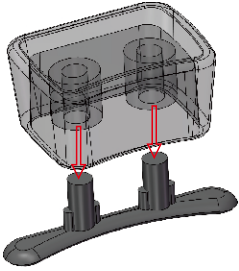
8



30x



30x

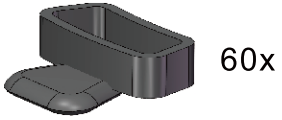


A8
30x

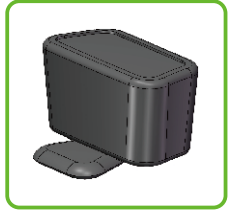
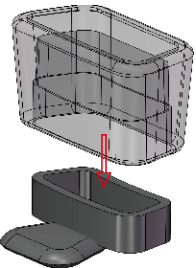
9



60x

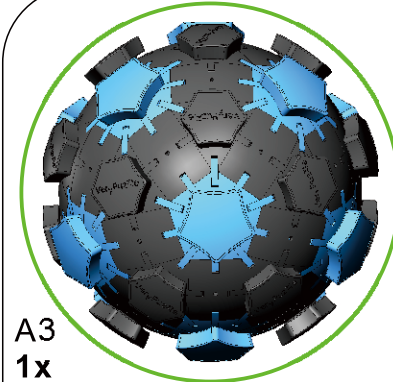


60x

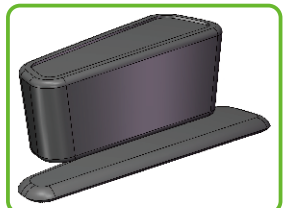


A9
60x

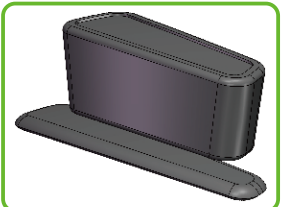
10



A3
1x



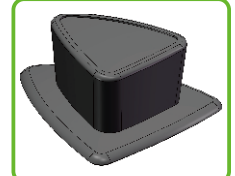
A4
60x



A5
60x



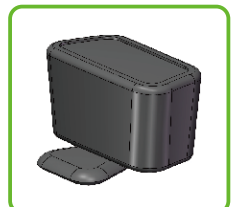
A7
60x



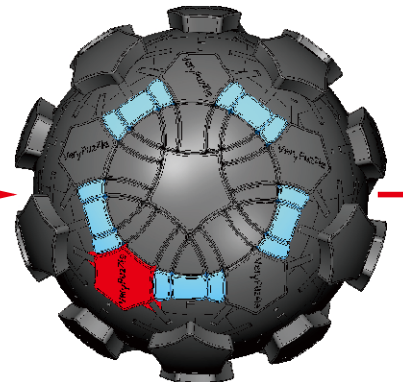
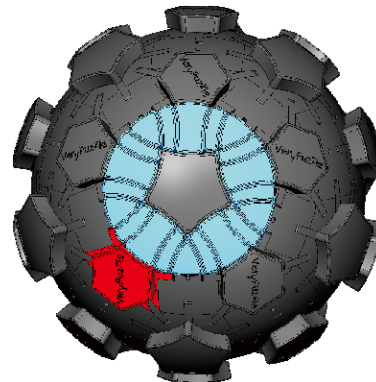
A6
60x



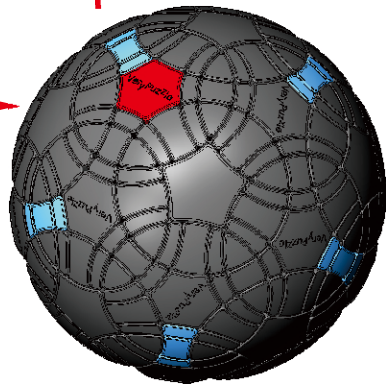
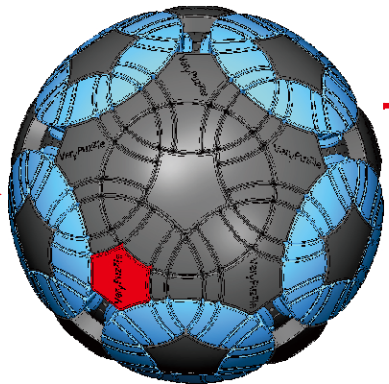
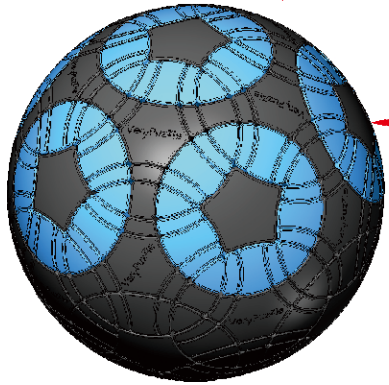
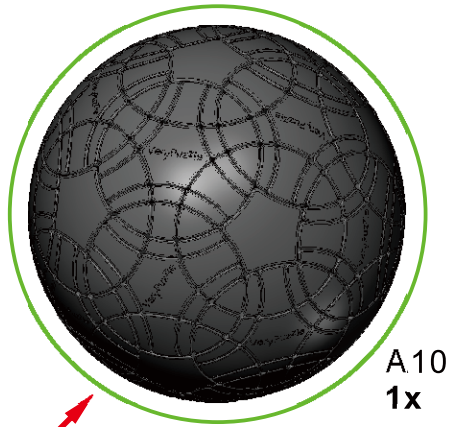
A8
30x



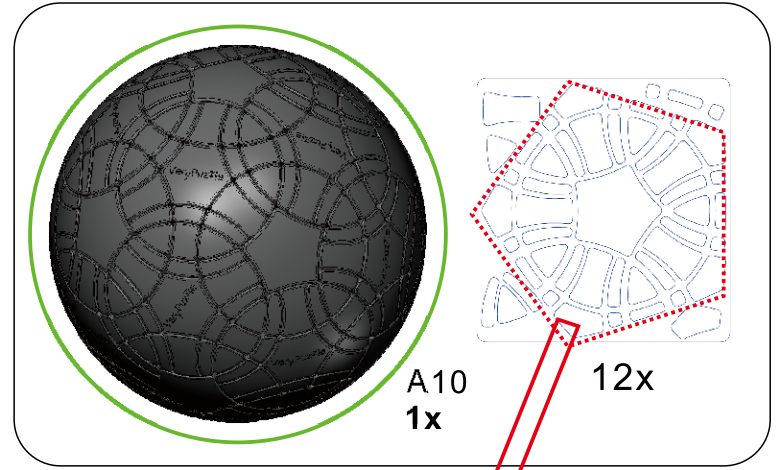
A9
60x



10



11



12

Rotation Rules

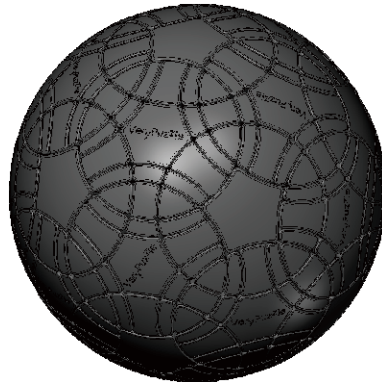
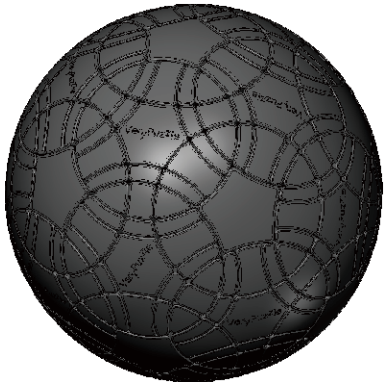


6-fold symmetry
Turns $60 \cdot n$ degrees



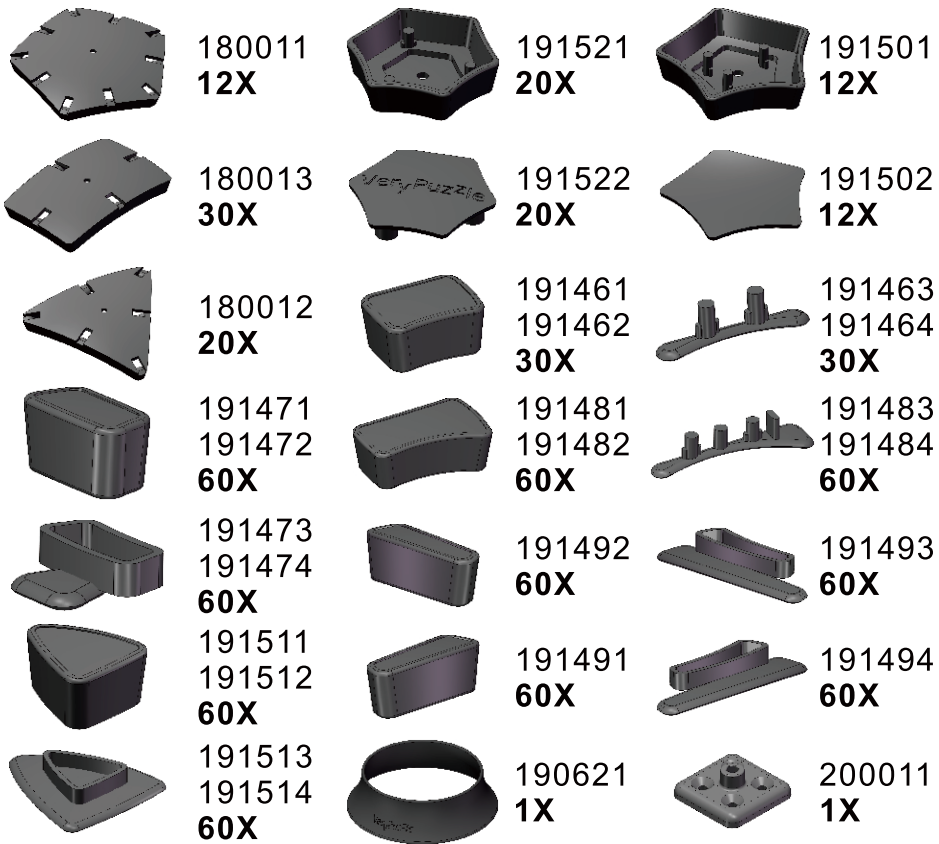
5-fold symmetry
Turns $72 \cdot n$ degrees

Notations and Algorithms

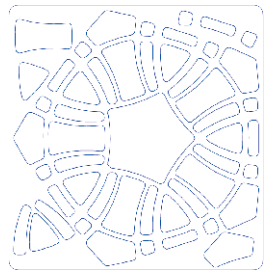


Product Information Card

Product Name	Tuttminx F2
Model NO.	#89
Design	VeryPuzzle Co., Ltd(HK)
Manufacturer	VeryPuzzle Co., Ltd(HK)
Year of release	2020
Maximum diameter	145 mm
Visible moving parts	362 pcs
Assembly challenge	★★★★☆☆☆☆☆☆
Solving challenge	★★★★☆☆☆☆☆☆
Stickers strategy	Voronoi, simplified
Sticker material	Textured
Color scheme	12 colors
Sticker protection	Yes
Number of stickers	492 pcs
Axis & Symmetry	D(C5)+I(C6)
In-core spring	Yes
Adjustable tension	No
Technical Name	D113-M5-F2
Topological Print	D27.5I27
Core specification	DIRT130



180X 32X 32X 32X



12X

Customer Service

1. support@verypuzzle.com



VeryPuzzle