

How to tighten the screws

1. It is always recommended to tighten the screws deep enough. The tighter the screws are, the more stable a puzzle will be (and probably more stiff while making turns).

2. Always leave a little bit of radial space along the screw so that the center cap can be lifted by around 1~2mm for single layered models.

****For those in-between models, like #65, #85, #88, #89, it is recommended to tighten further.**

****For neat multiple layered models like #61, #75, #87, tighten the screws to their full depth.**

3. Rules of thumb. Tension adjustment is in general dependent on personal judgement. Different tension could result in very different feel. Start with simple models and accumulate your own sense. Use different springs, screws, nuts if you think the default set can't provide your favorite handle.

4. Previous description of sticking screws out of nuts by 1-3mm is misleading in some cases and is not anymore recommended. Reason: the height of caps varies in different models.

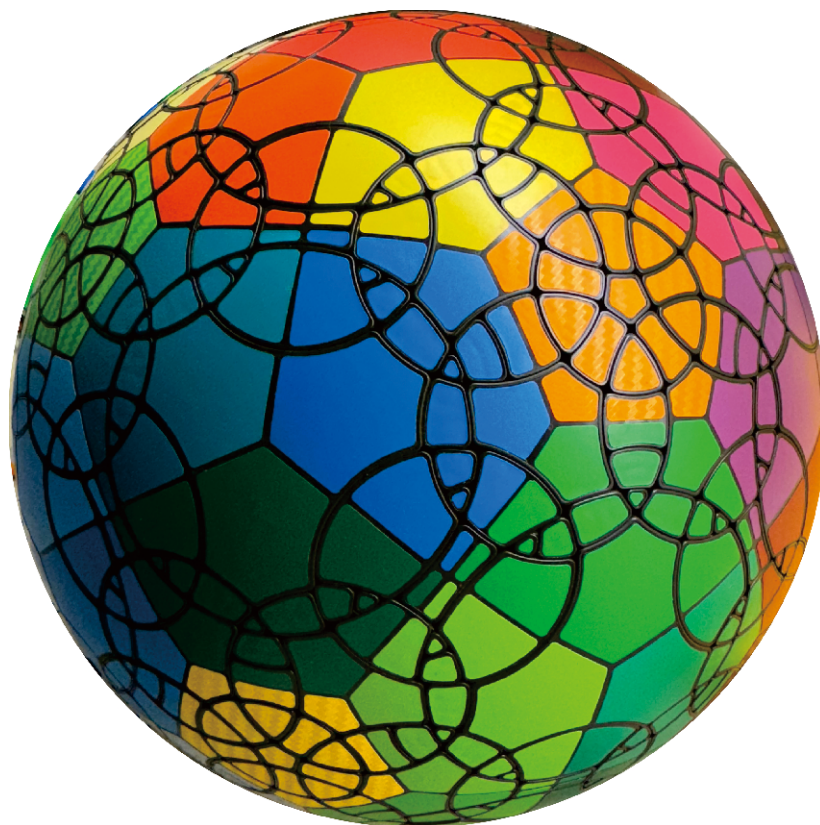
VeryPuzzle
2021/08/06

VeryPuzzle

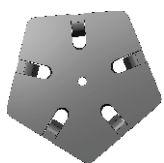


DIRT-C1-F1
D1I1RT1-CL3-F1
#94

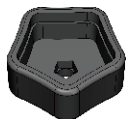
2600+ parts
122 axes



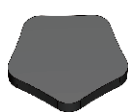
1



12x



12x



12x



60x



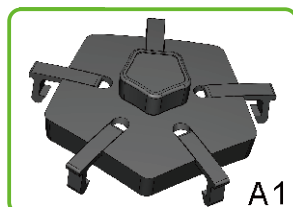
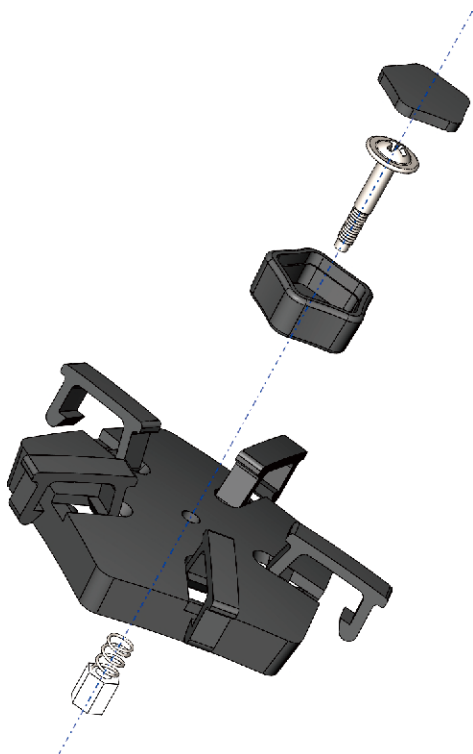
12x



12x



12x



A1

12x

2



30x



30x



30x



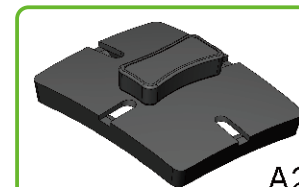
30x



30x



30x



A2

30x

3



20x

20x

20x



60x



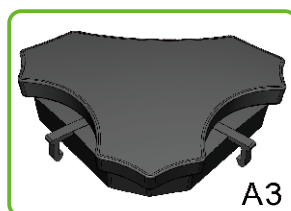
20x



20x



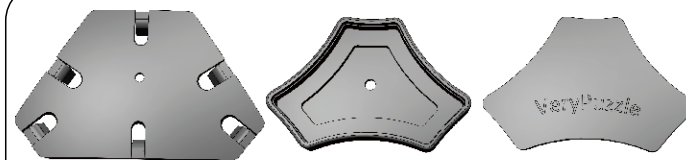
20x



A3

20x

4



60x

60x

60x



240x



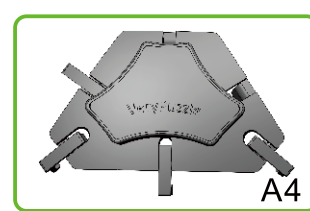
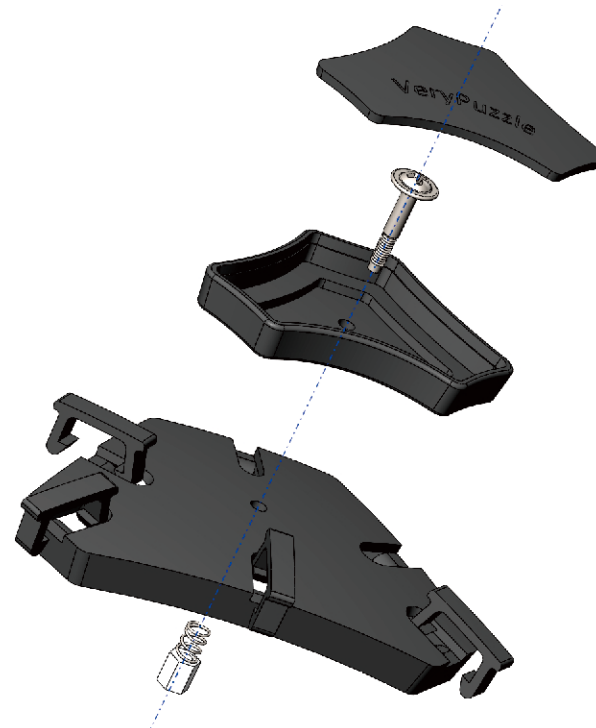
60x



60x



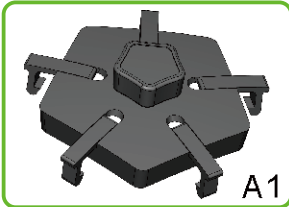
60x



A4

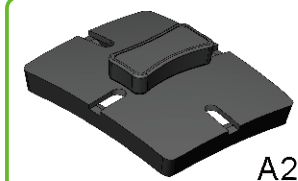
60x

5



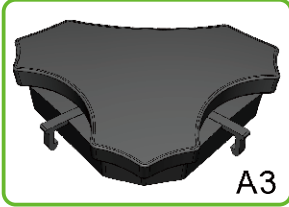
A1

12x



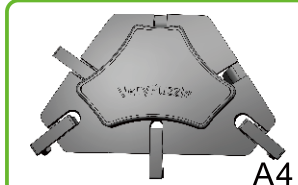
A2

30x



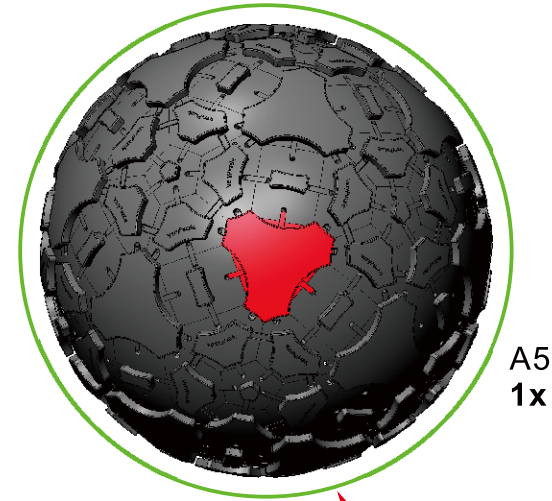
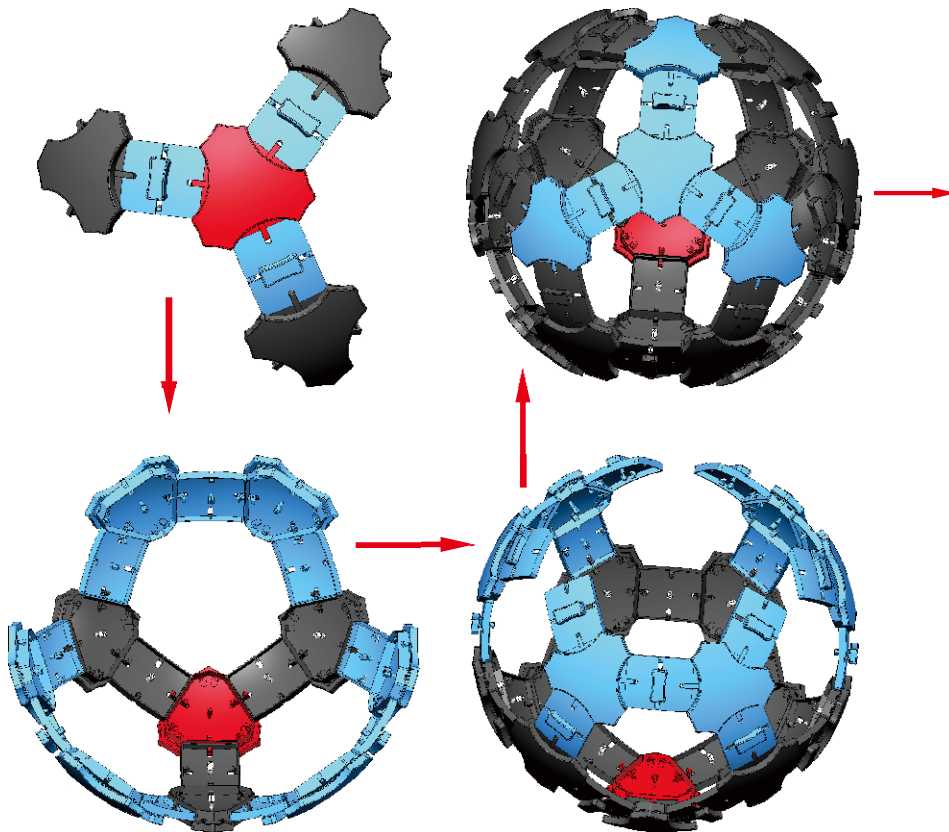
A3

20x

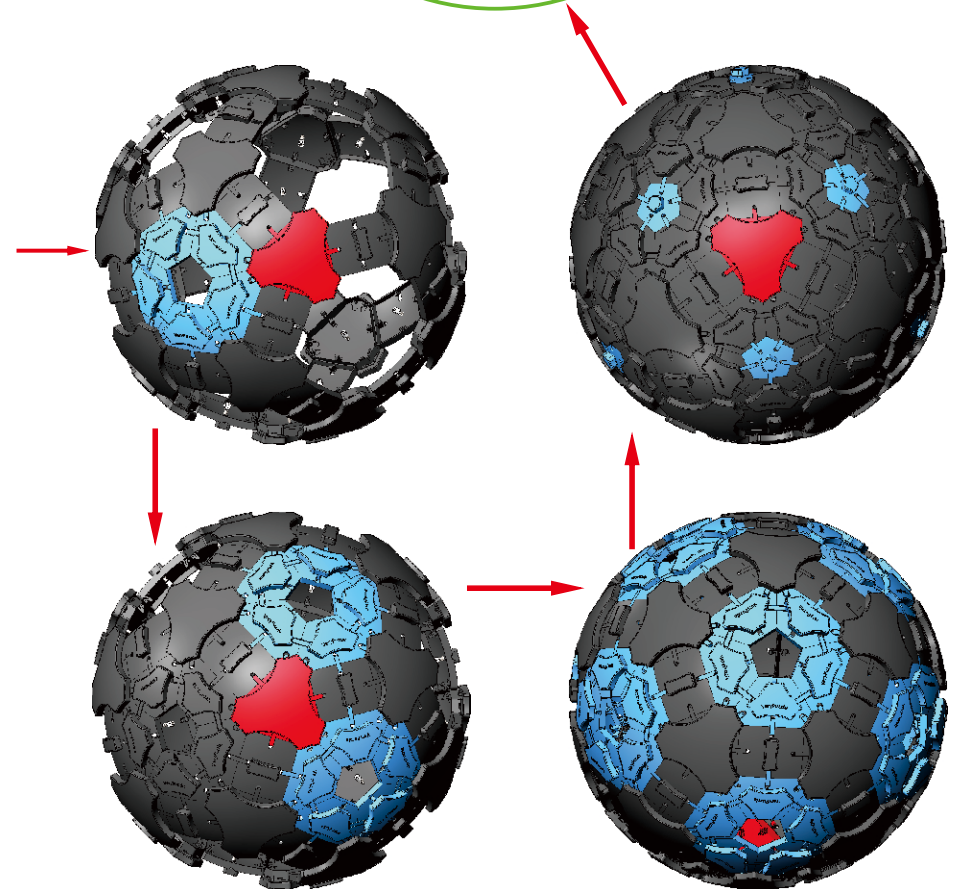


A4

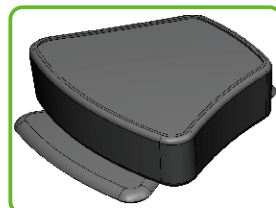
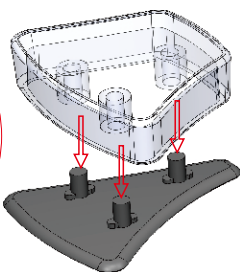
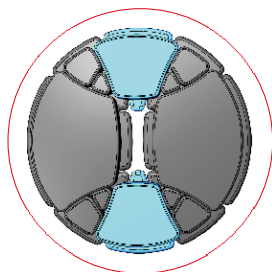
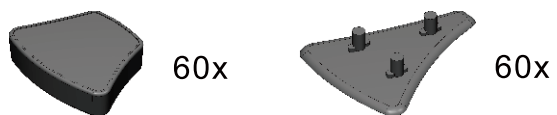
60x



A5
1x

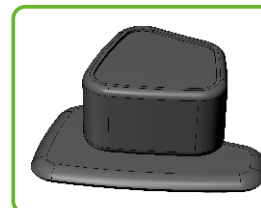
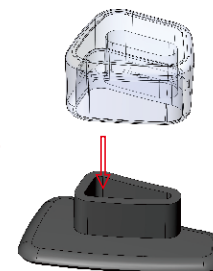
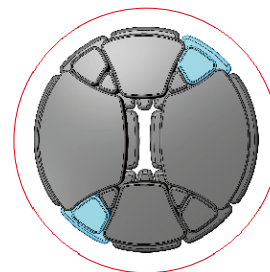


6



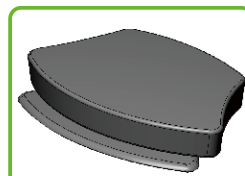
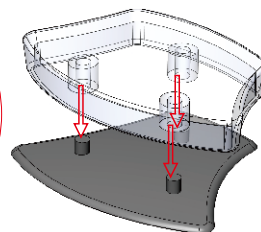
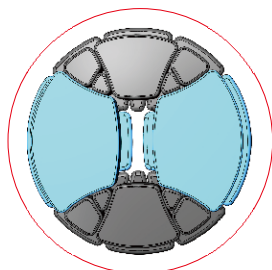
A6
60x

9



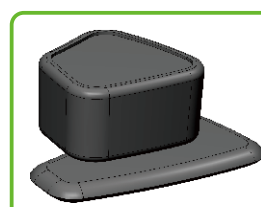
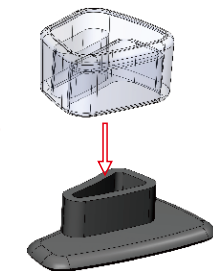
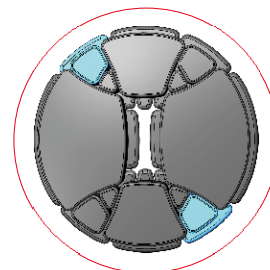
A9
60x

7



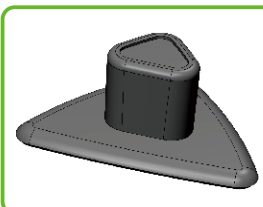
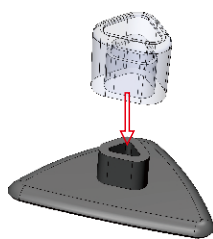
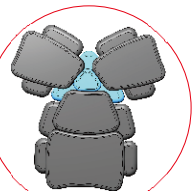
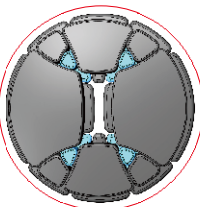
A7
60x

10



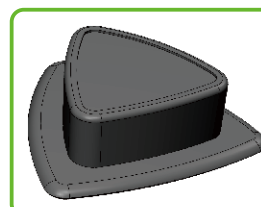
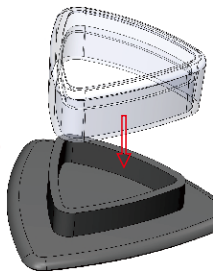
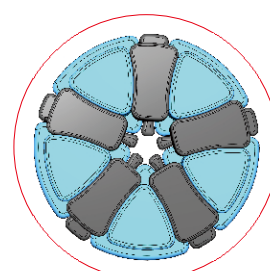
A10
60x

8



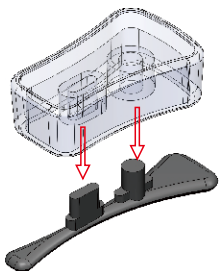
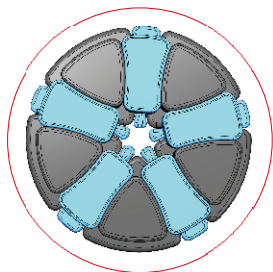
A8 180x

11



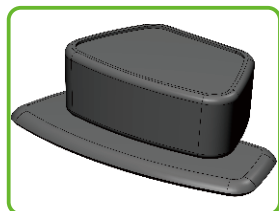
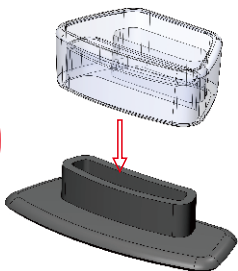
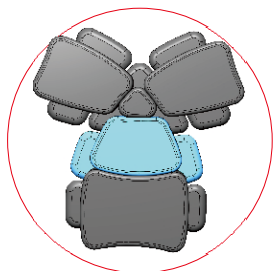
A11
60x

12



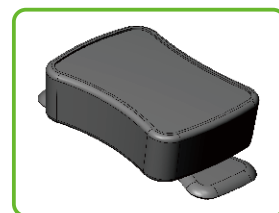
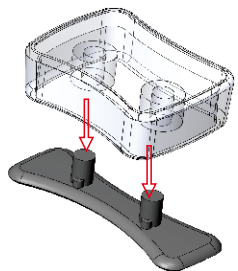
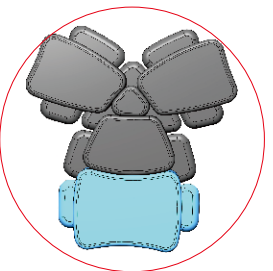
A12
60x

13



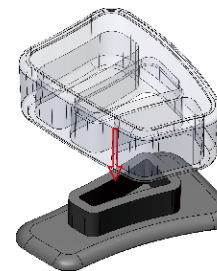
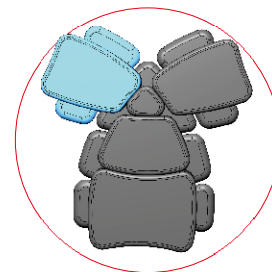
A13
60x

14



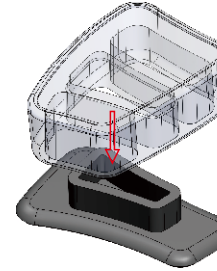
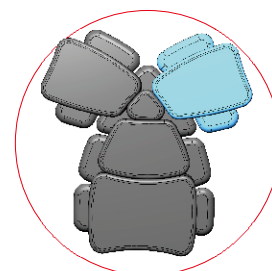
A14
60x

15



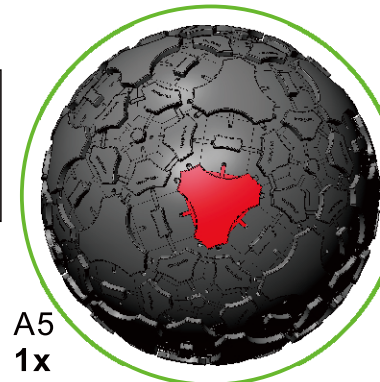
A15
60x

16



A16
60x

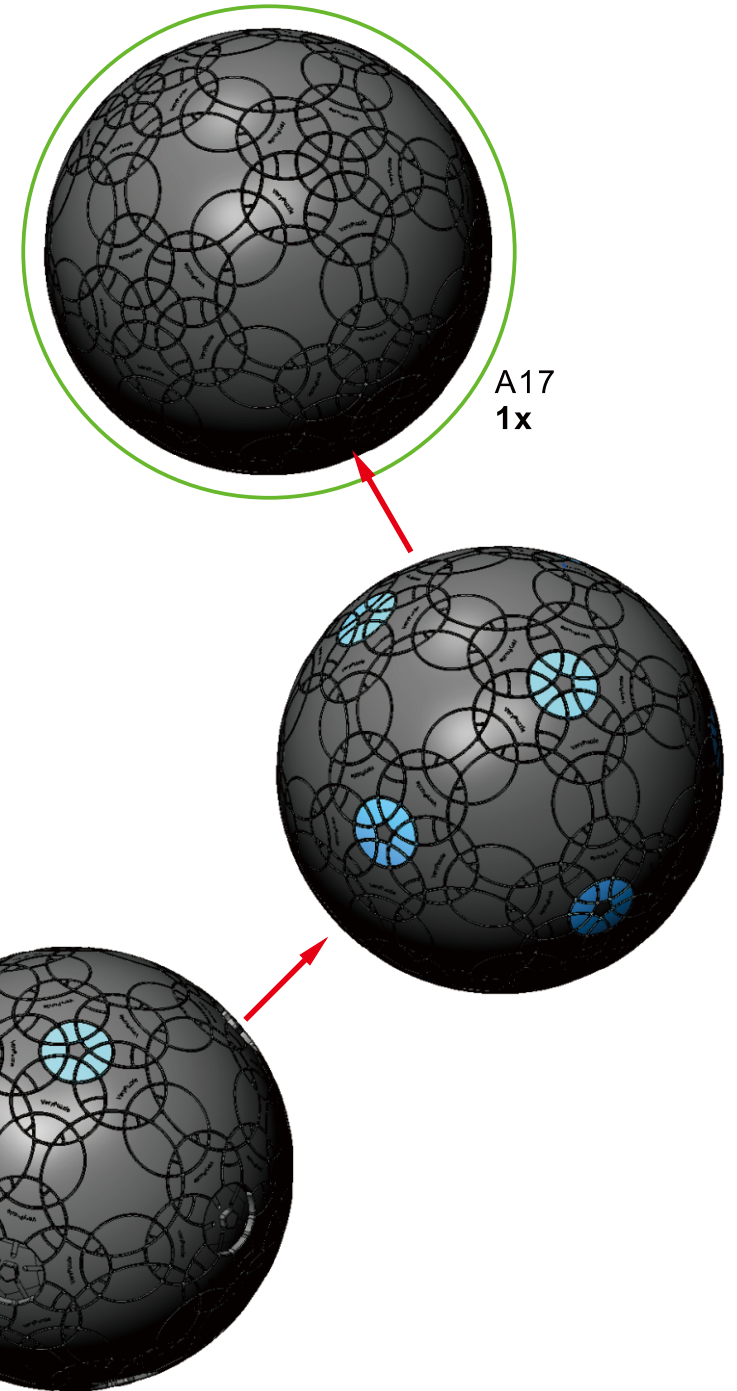
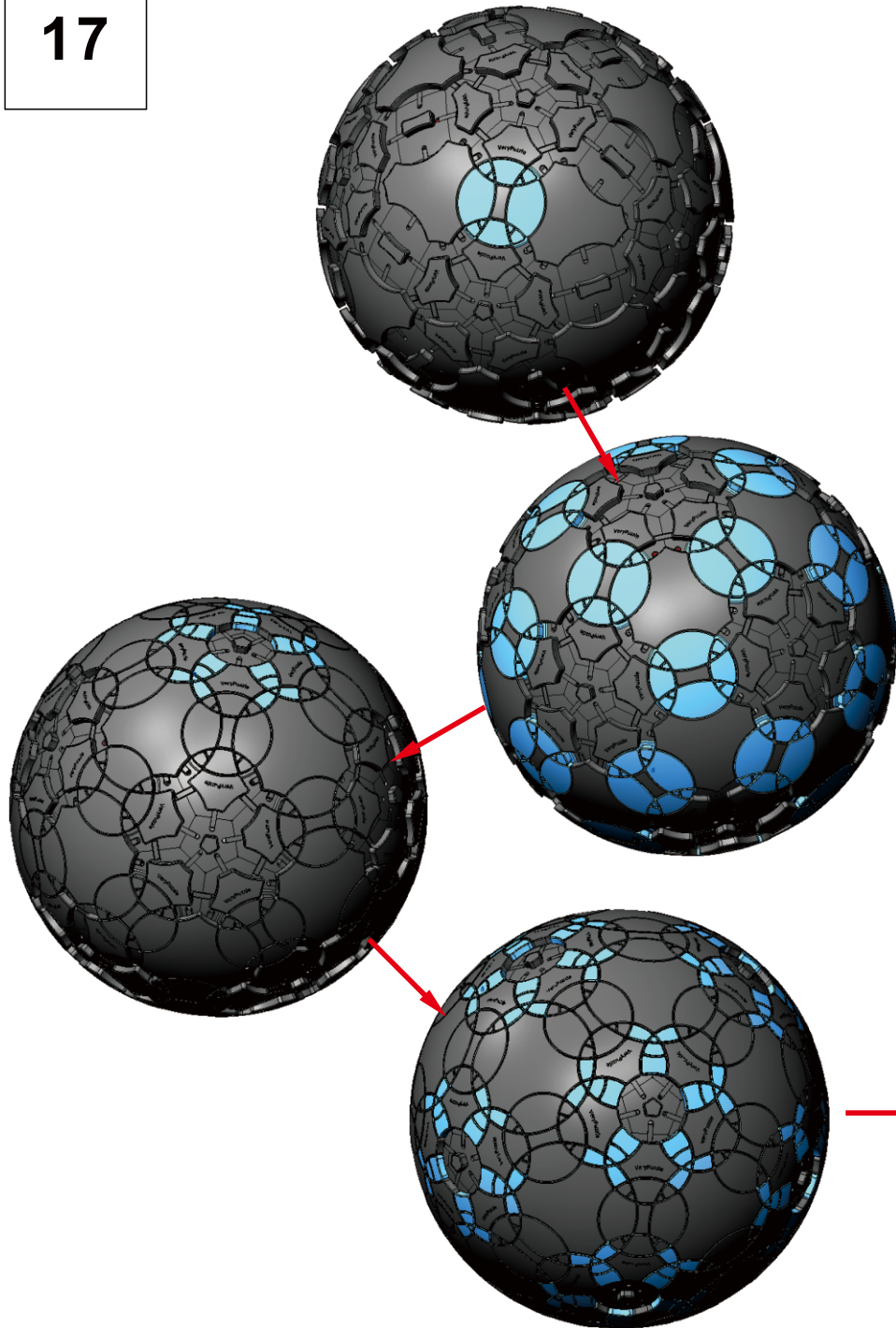
17



A5
1x

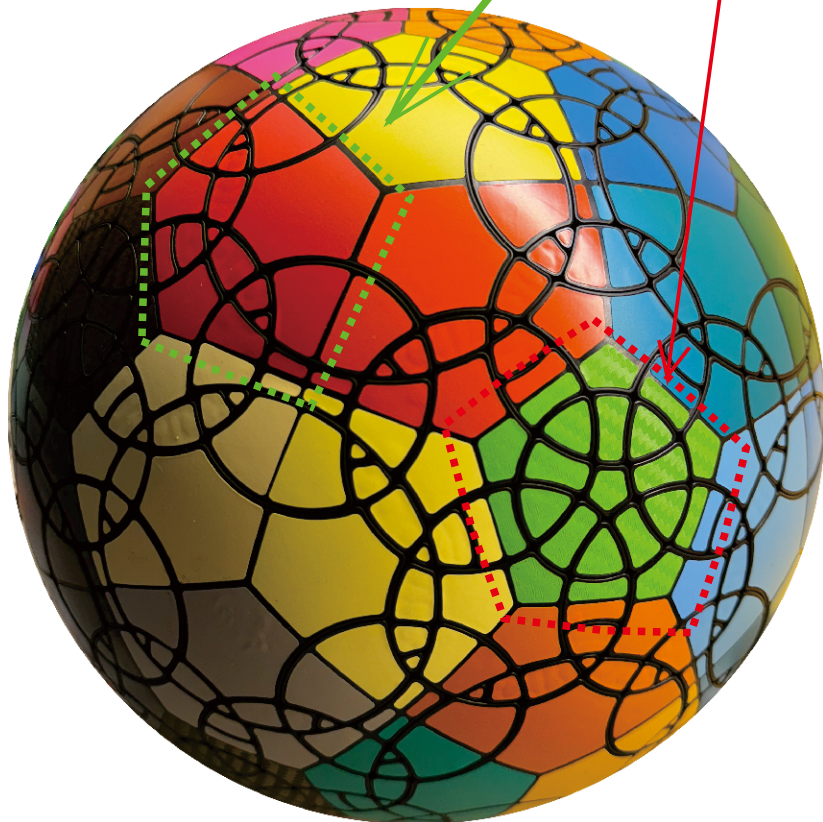
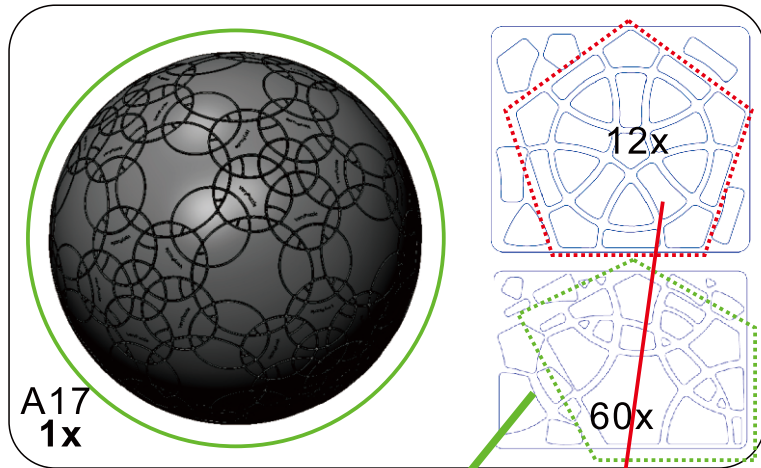
+

A6 x60
A7 x60
A8 x180
A9 x60
A10 x60
A11 x60
A12 x60
A13 x60
A14 x60
A15 x60
A16 x60



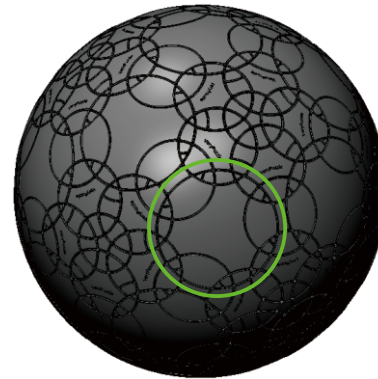
A17
1x

18

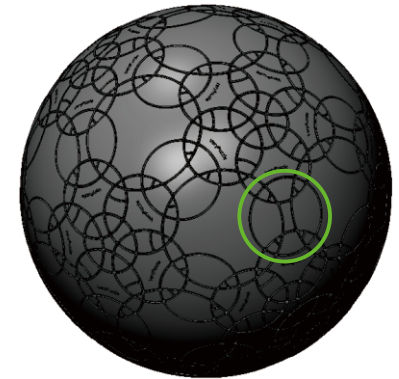


19

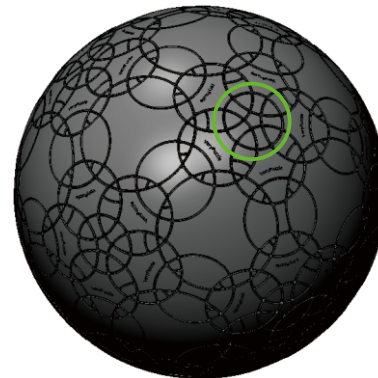
Rotation Rules



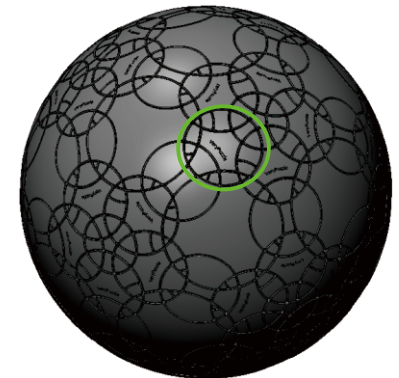
3-fold symmetry
Turns $120 \cdot n$ degrees
R6 symmetry
Turns $120 \cdot n + xxx$ degrees



2-fold symmetry
Turns $180 \cdot n$ degrees

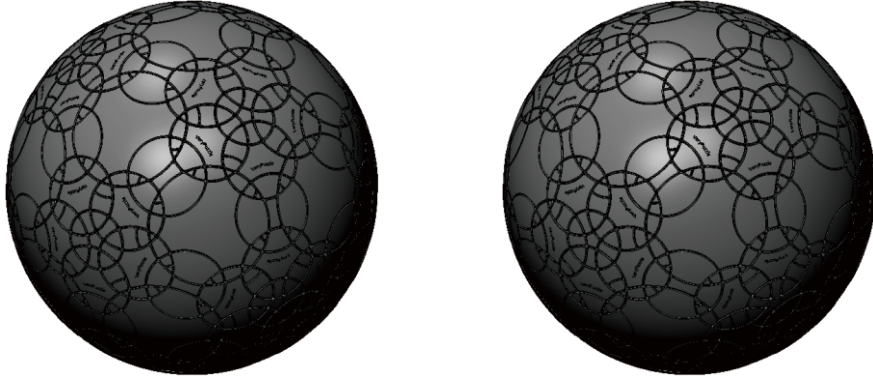


5-fold symmetry
Turns $72 \cdot n$ degrees

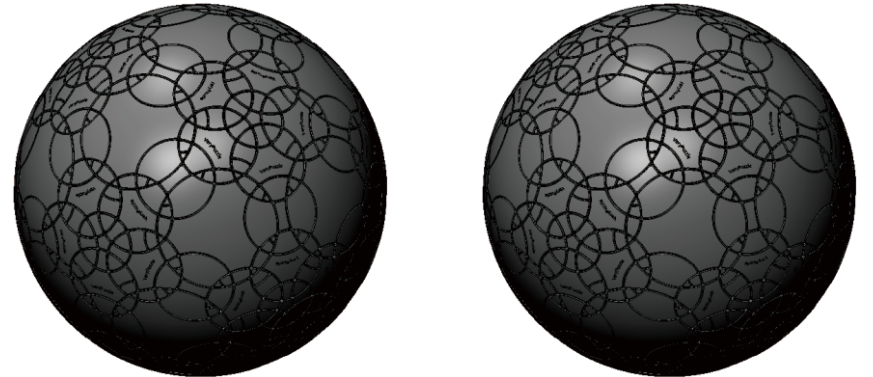


R2&R3 symmetry

Notations and Algorithms

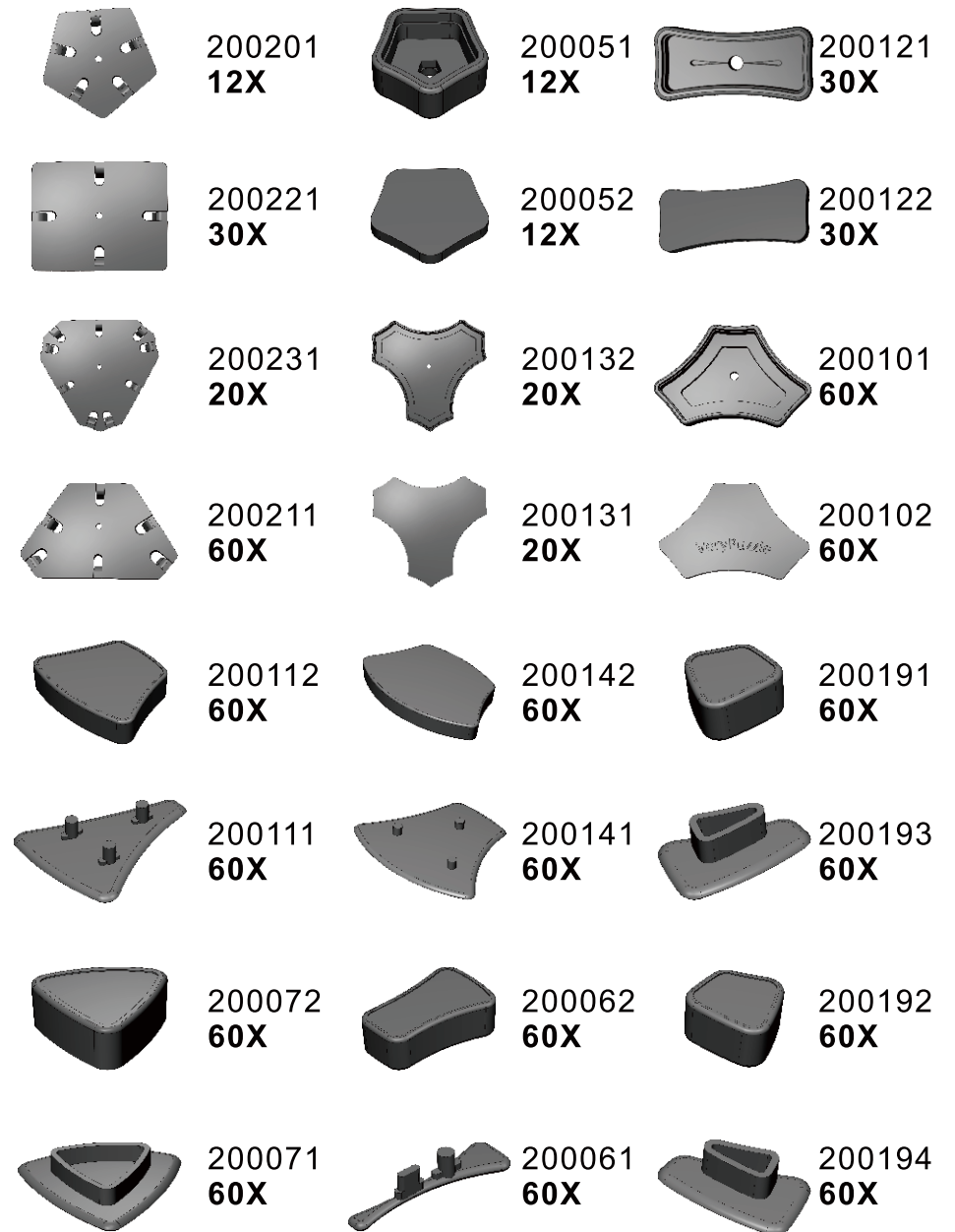


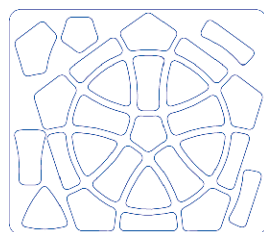
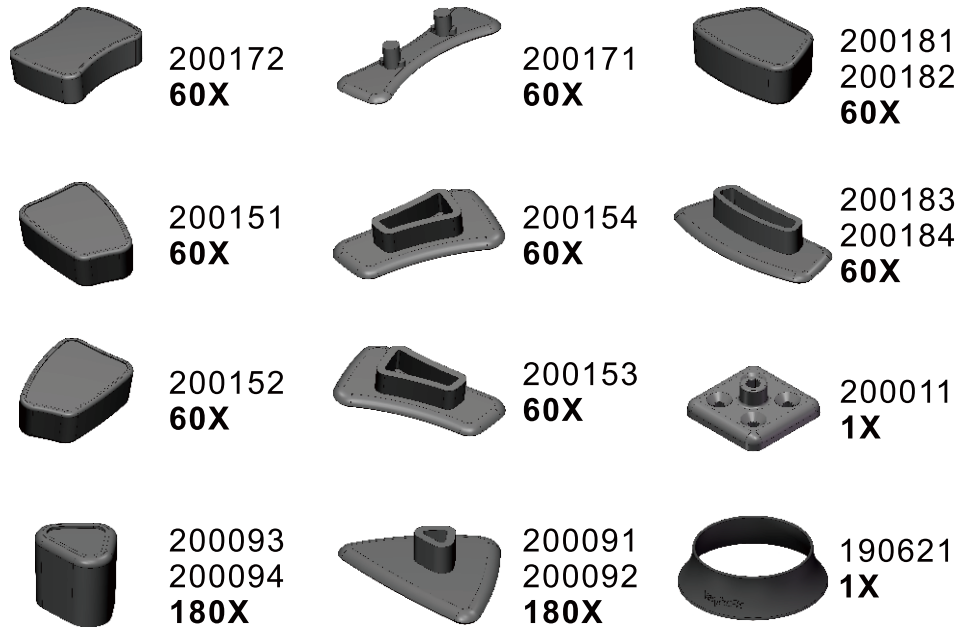
Notations and Algorithms



Product Information Card

Product Name	DIRT - C1-F1
Model NO.	#94
Design	VeryPuzzle Co., Ltd(HK)
Manufacturer	VeryPuzzle Co., Ltd(HK)
Year of release	2023
Maximum diameter	265 mm
Visible moving parts	902 pcs
Assembly challenge	★★★★★☆☆☆☆☆
Solving challenge	★★★★★☆☆☆☆☆
Stickering strategy	Voronoi, simplified
Sticker material	Textured, uniform
Color scheme	72 colors
Sticker protection	Yes
Number of stickers	1332 pcs
Axis & Symmetry	D(C5)+I(C3+R6)+RT(C2)+CL(R3+R2)
In-core spring	Yes
Adjustable tension	No
Technical Name	D1I1RT1-CL3-F1
Topological Print	D(9.5)I(19)RT(12.5)CL(12.5)
Core specification	DIRT-CL1-250





12x



60x

Customer Service

1. support@verypuzzle.com



VeryPuzzle